

Lead Mapping Submission

The Golf Club PWS
4522 Kitzmiller Road
New Albany, Ohio 43054

PWS ID: OH2565912
STU #: 2562008

The following two pages attempts to represent the Clubhouse and Pro Shop as constructed. There are no construction drawings, so some of the details are vague.

- The original structures were built in 1967. Before 1998 there was no limit on lead. The original sections which still remain may have materials with greater than 8% lead and are at a higher risk of contributing lead to the drinking water than materials manufactured after 1998. (marked in pink highlights)
- There have been two renovations. The first was in the Pro Shop building. All of the fixtures were replaced, but some of the original piping remains. This renovation was completed in 2013, which means it would fall in the time frame of the 1998 – 2014, which is when lead solder was banned and there was lower content of lead in brass. The remaining original pipe would have been installed before the 1998 limit on lead was put in place. The original sections which still remain may have materials with greater than 8% lead and are at a higher risk of contributing lead to the drinking water than materials manufactured after 1998. (marked in pink highlights)
- The most recent renovation was in the Clubhouse. This work began in 2016 and will be completed in 2017. All of the plumbing and fixtures in the new areas have been completely replaced with new materials. These sections were constructed after the 2014 change to plumbing materials, which are now required to have less than 0.25% lead by weight and have the lowest risk for contributing lead to the drinking water.

The color coding on the map indicates Lead content knowledge. The color coding is:

Lead piping:	green highlight
Potential Lead:	pink highlight
Non-Lead:	no highlight

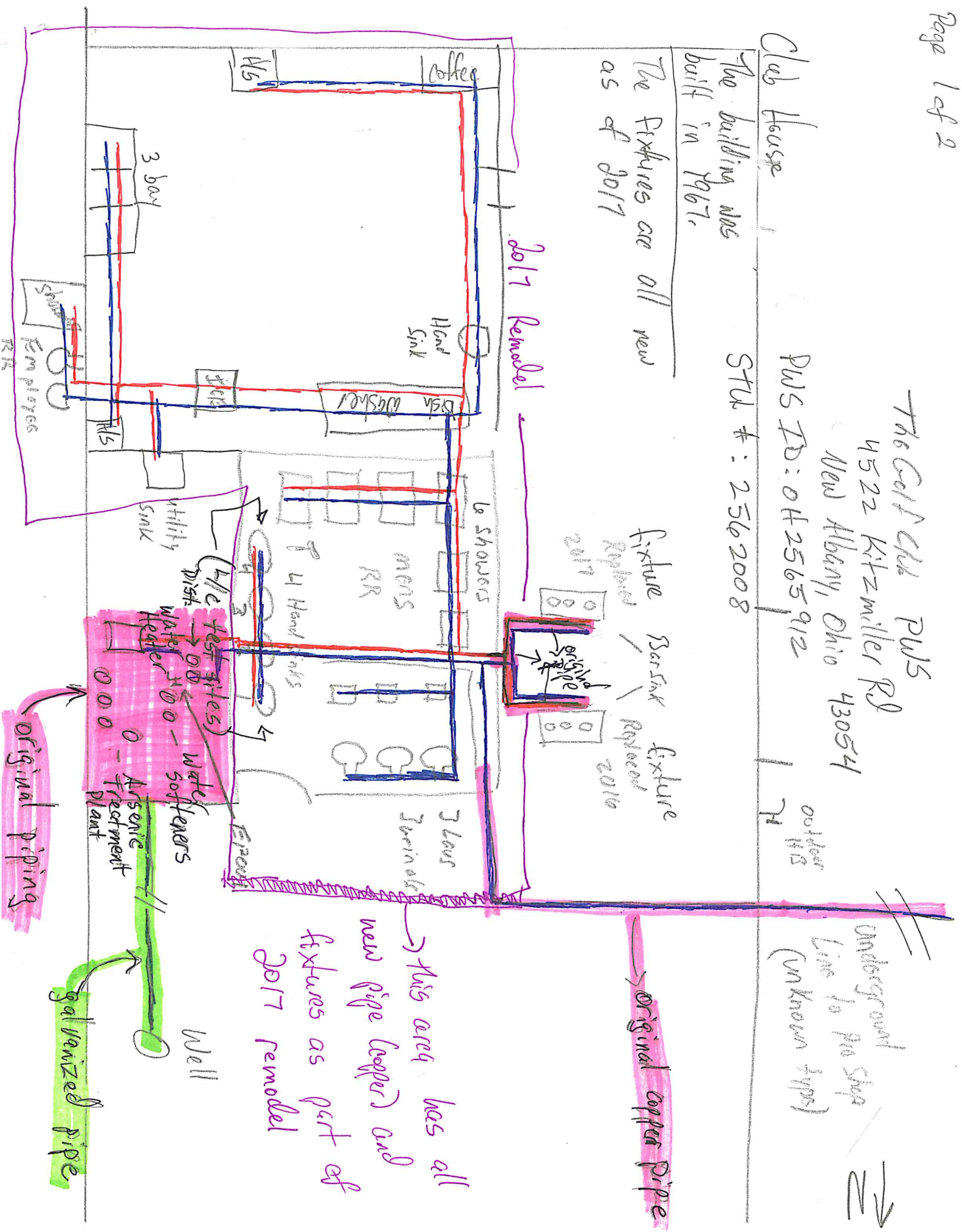
The Golf Club PWS
4522 Kitzmiller Rd
New Albany, Ohio 43054

PWS ID: OH2565912
STU #: 2562008

Club House

The building was built in 1967.

The fixtures are all new as of 2017



2017 Remodel

Bar Sink / Fixture Replaced 2010
2017 Replaced Fixture

original piping

original copper pipe

this area has all new pipe (copper) and fixtures as part of 2017 remodel

galvanized pipe

Well

Arsenic Treatment Plant
water softeners
water heater

utility sink

3 showers

mens RR

3 lavs

3 urinals

4 Hand sinks

4/c rest sites

water heater

water softeners

Arsenic Treatment Plant

3 bar

Hand Sink

Dish Washer

Coffee

W/S

Sponges

RRs
Employees

outdoor H/S

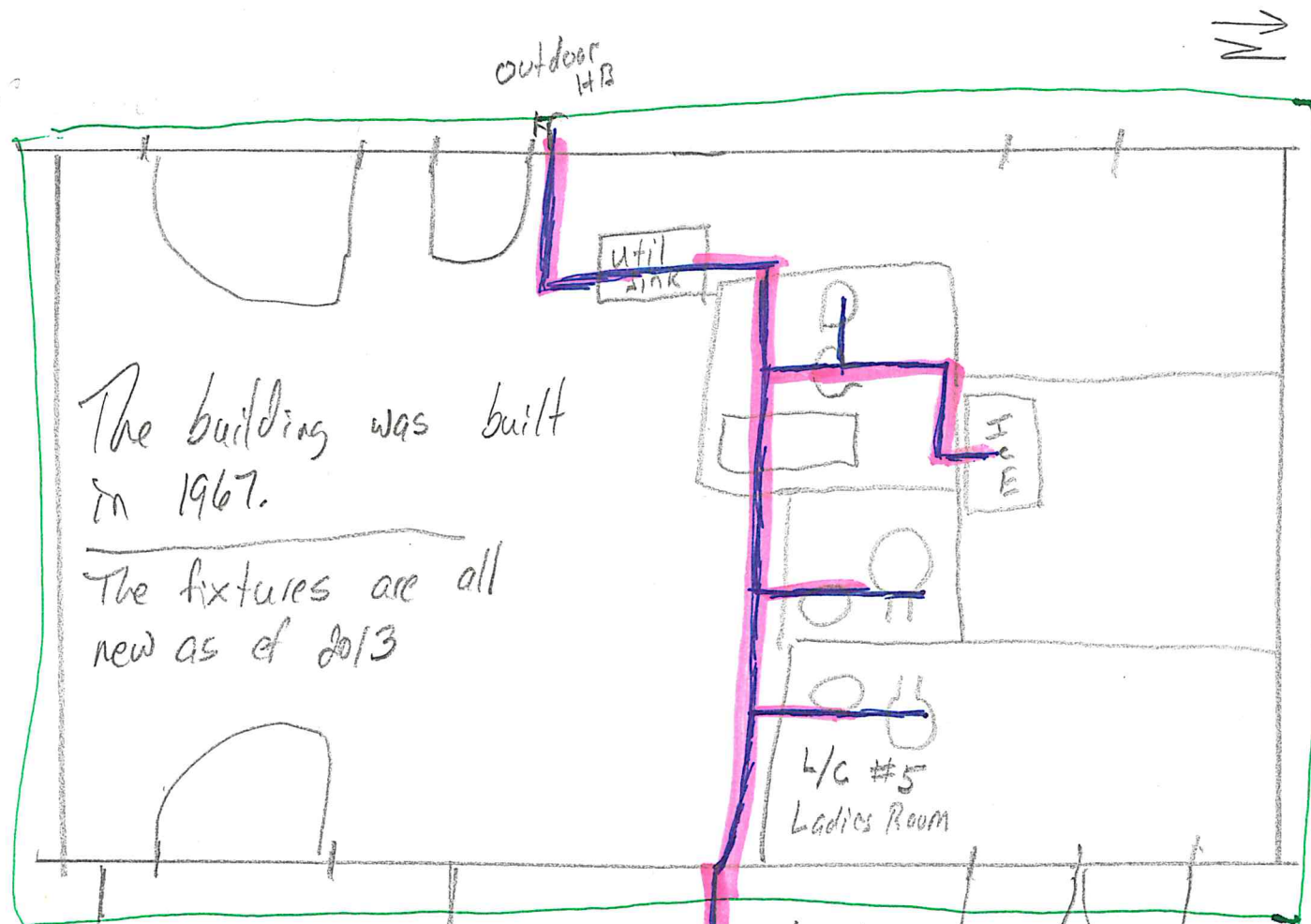
Underground Line to pro Shop (unknown type)



Pro Shop (only contains cold water distribution)

All fixtures Redone in 2013 remodel

EXCEPT for outdoor HD (All copper pipes)



The building was built in 1967.

The fixtures are all new as of 2013

All fixtures in this area replaced as part of 2013 Remodel

Underground pipes from Clubhouse (unknown) type

- Areas highlighted in green contain lead (galvanized pipe)
- Areas highlighted in pink are "potential lead" areas based on age of construction, some materials may contain lead.