

# Gloryland Church of the Nazarene

3570 Coonpath Road

Carroll, OH 43112

740-756-4433

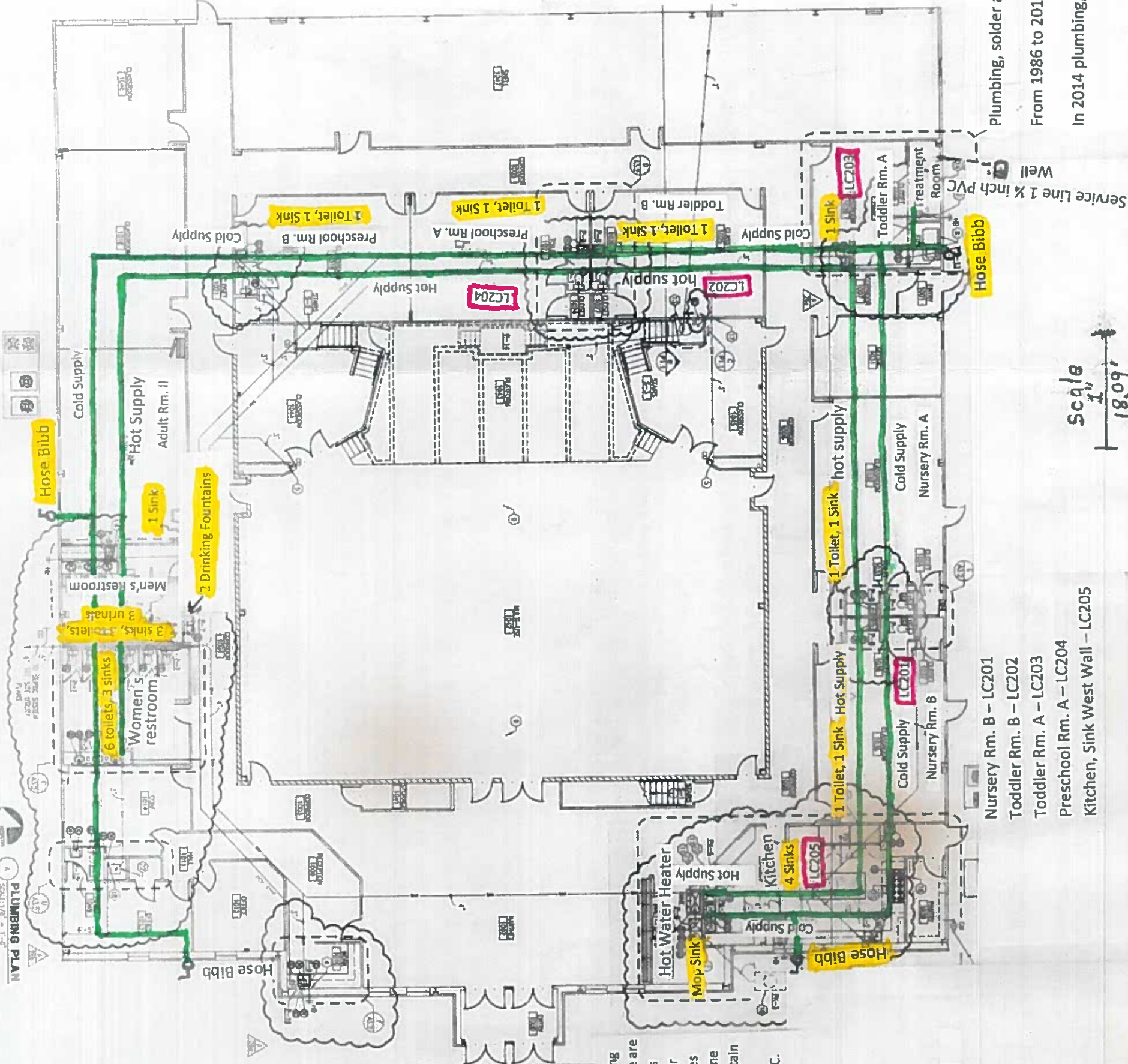
PWS OH2347612

| SMP ID # | Location                | Tier Site | Plumbing Age |
|----------|-------------------------|-----------|--------------|
| LC201    | Nursery Rm. B           | 1         | Cu/Pb>82     |
| LC202    | Toddler Rm. B           | 1         | Cu/Pb>82     |
| LC203    | Toddler Rm. A           | 1         | Cu/Pb>82     |
| LC204    | Preschool Rm. A         | 1         | Cu/Pb>82     |
| LC205    | Kitchen, Sink West Wall | 1         | Cu/Pb>82     |

Constructed 2001

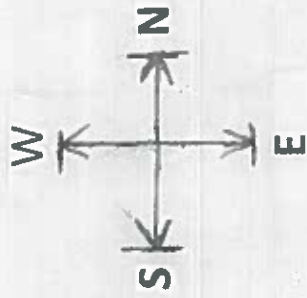
### Plumbing Lines Color Scheme

- Lead
- Fixtures and solder may contain lead based on year of construction
- No Information



All plumbing supply lines are copper, ranging in size from 1 1/2 inch down to 1/2 inch. There are no lead lines in the system. The church was constructed in 2001 so therefore the solder used had reduced lead content. The fixtures that are in the building were new at the time of construction in 2001, so also would contain reduced lead levels.

The service line from the well is 1 1/2 inch PVC.



- Nursery Rm. B – LC201
- Toddler Rm. B – LC202
- Toddler Rm. A – LC203
- Preschool Rm. A – LC204
- Kitchen, Sink West Wall – LC205

Scale  
1" = 18'0"

Plumbing, solder and fixtures produced before 1986 had no limit on the lead content.

From 1986 to 2014 the plumbing, fixtures and solder could contain up to 8.0% lead.

In 2014 plumbing, fixtures and solder were limited to 0.25% lead.