

# VILLAGE OF DRESDEN

## BOARD OF PUBLIC AFFAIRS

28 E. 8TH ST. DRESDEN, OHIO 43821 P.O. BOX 263  
740-754-1263 Water Works  
740-754-2569 Water Clerk

March 8, 2017

Mr. Rex Haggy  
Ohio EPA  
Southeast District Office – DDAGW  
2195 Front Street  
Logan, OH 43138

Re: Village of Dresden  
Lead Service Line and Fixture Mapping Project

Dear Mr. Haggy:

Attached please find the following mapping information related to the January 17, 2017 request for Lead Service Line and Fixture Mapping from the Village of Dresden:

1. Water Main Materials Mapping (set of three maps)
2. Service Line Material Mapping (set of three maps)
3. Building Piping/Fixture Material Mapping (set of three maps)

In developing this mapping the Village utilized the following information:

1. Available system drawings.
2. Interviews with personnel involved in system maintenance activities.
3. Direct observation during maintenance activities by the system operator.
4. System service connection cards as available.
5. System maintenance records.
6. Construction dates for structures served by the distribution system.

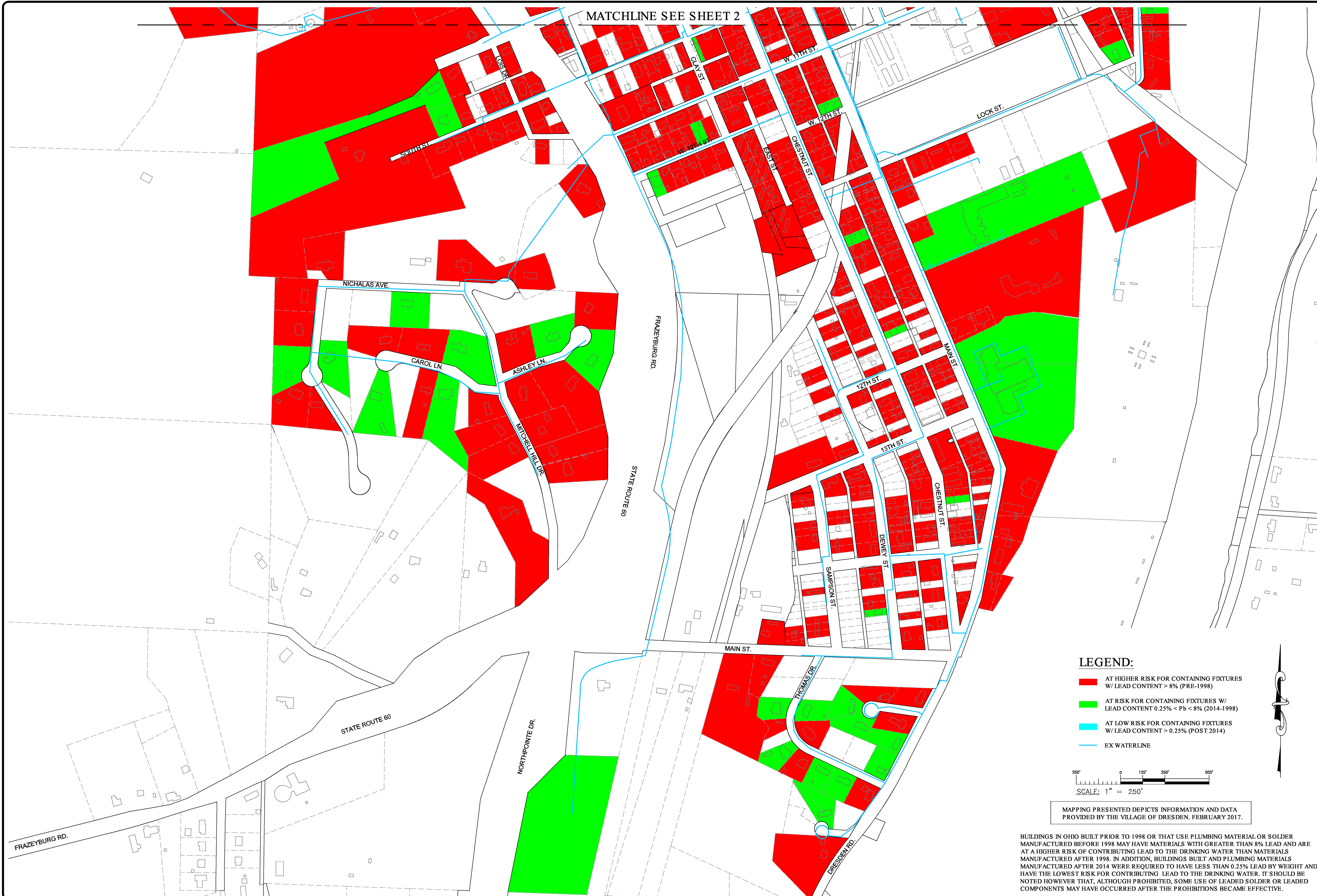
In addition to the above information we have also enclosed for reference a copy of the Village of Dresden Lead and Copper Sample Monitoring Point ID's.

Please review the enclosed information and notify our office if further information is required.

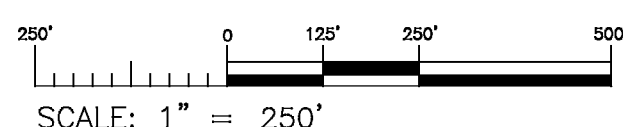
Sincerely;

Scott Liston  
Operator





- LEGEND:**
- AT HIGHER RISK FOR CONTAINING FIXTURES W/ LEAD CONTENT > 8% (PRE-1998)
  - AT RISK FOR CONTAINING FIXTURES W/ LEAD CONTENT 0.25% < Pb < 8% (2014-1998)
  - AT LOW RISK FOR CONTAINING FIXTURES W/ LEAD CONTENT > 0.25% (POST 2014)
  - EX WATERLINE



MAPPING PRESENTED DEPICTS INFORMATION AND DATA PROVIDED BY THE VILLAGE OF DRESDEN, FEBRUARY 2017.

BUILDINGS IN OHIO BUILT PRIOR TO 1998 OR THAT USE PLUMBING MATERIAL OR SOLDER MANUFACTURED BEFORE 1998 MAY HAVE MATERIALS WITH GREATER THAN 8% LEAD AND ARE AT A HIGHER RISK OF CONTRIBUTING LEAD TO THE DRINKING WATER THAN MATERIALS MANUFACTURED AFTER 1998. IN ADDITION, BUILDINGS BUILT AND PLUMBING MATERIALS MANUFACTURED AFTER 2014 WERE REQUIRED TO HAVE LESS THAN 0.25% LEAD BY WEIGHT AND HAVE THE LOWEST RISK FOR CONTRIBUTING LEAD TO THE DRINKING WATER. IT SHOULD BE NOTED HOWEVER THAT, ALTHOUGH PROHIBITED, SOME USE OF LEADED SOLDER OR LEADED COMPONENTS MAY HAVE OCCURRED AFTER THE PROHIBITIONS BECAME EFFECTIVE.

148 N HIGH STREET, GAHANNA, OHIO 43230  
PHONE: 614-471-7310, FAX: 614-471-7720  
WWW.GEOENGINEERS.COM


VILLAGE OF DRESDEN  
LEAD SERVICE LINE & FIXTURE  
MAPPING PROJECT

CLIENT: VILLAGE OF DRESDEN  
ADDRESS: 28 EAST EIGHTH STREET, DRESDEN, OH 43821  
LOCATION: MUSKINGUM COUNTY, OHIO

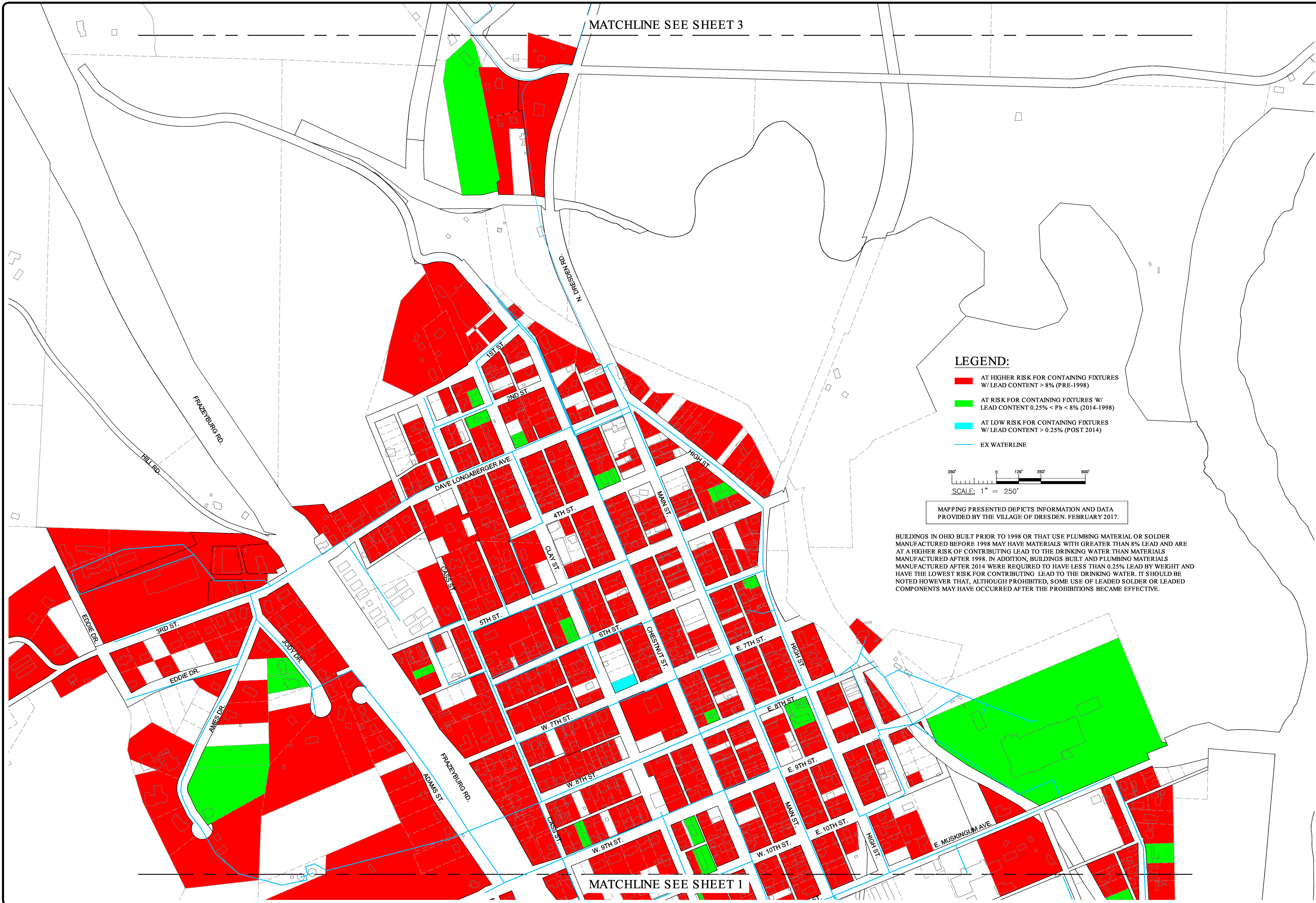
SCALE: AS NOTED			
DESIGN BY:	—	DWN BY:	AGD
CHK'D BY:	—	APP'V'D BY:	—
COPYRIGHT © 2017 GEO ENGINEERS, INC.			

BUILDING  
PIPING/FIXTURE  
MATERIALS

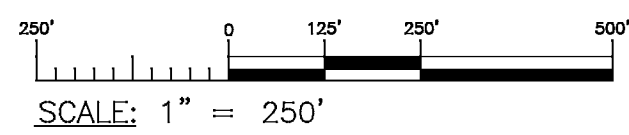
SHT#  
1 OF 3

PROJ# 17199 3/3/2017





- LEGEND:**
- AT HIGHER RISK FOR CONTAINING FIXTURES W/ LEAD CONTENT > 8% (PRE-1998)
  - AT RISK FOR CONTAINING FIXTURES W/ LEAD CONTENT 0.25% < Pb < 8% (2014-1998)
  - AT LOW RISK FOR CONTAINING FIXTURES W/ LEAD CONTENT > 0.25% (POST 2014)
  - EX WATERLINE



MAPPING PRESENTED DEPICTS INFORMATION AND DATA PROVIDED BY THE VILLAGE OF DRESDEN. FEBRUARY 2017.

BUILDINGS IN OHIO BUILT PRIOR TO 1998 OR THAT USE PLUMBING MATERIAL OR SOLDER MANUFACTURED BEFORE 1998 MAY HAVE MATERIALS WITH GREATER THAN 8% LEAD AND ARE AT A HIGHER RISK OF CONTRIBUTING LEAD TO THE DRINKING WATER THAN MATERIALS MANUFACTURED AFTER 1998. IN ADDITION, BUILDINGS BUILT AND PLUMBING MATERIALS MANUFACTURED AFTER 2014 WERE REQUIRED TO HAVE LESS THAN 0.25% LEAD BY WEIGHT AND HAVE THE LOWEST RISK FOR CONTRIBUTING LEAD TO THE DRINKING WATER. IT SHOULD BE NOTED HOWEVER THAT, ALTHOUGH PROHIBITED, SOME USE OF LEADED SOLDER OR LEADED COMPONENTS MAY HAVE OCCURRED AFTER THE PROHIBITIONS BECAME EFFECTIVE.

REVISIONS

VILLAGE OF DRESDEN  
LEAD SERVICE LINE & FIXTURE  
MAPPING PROJECT

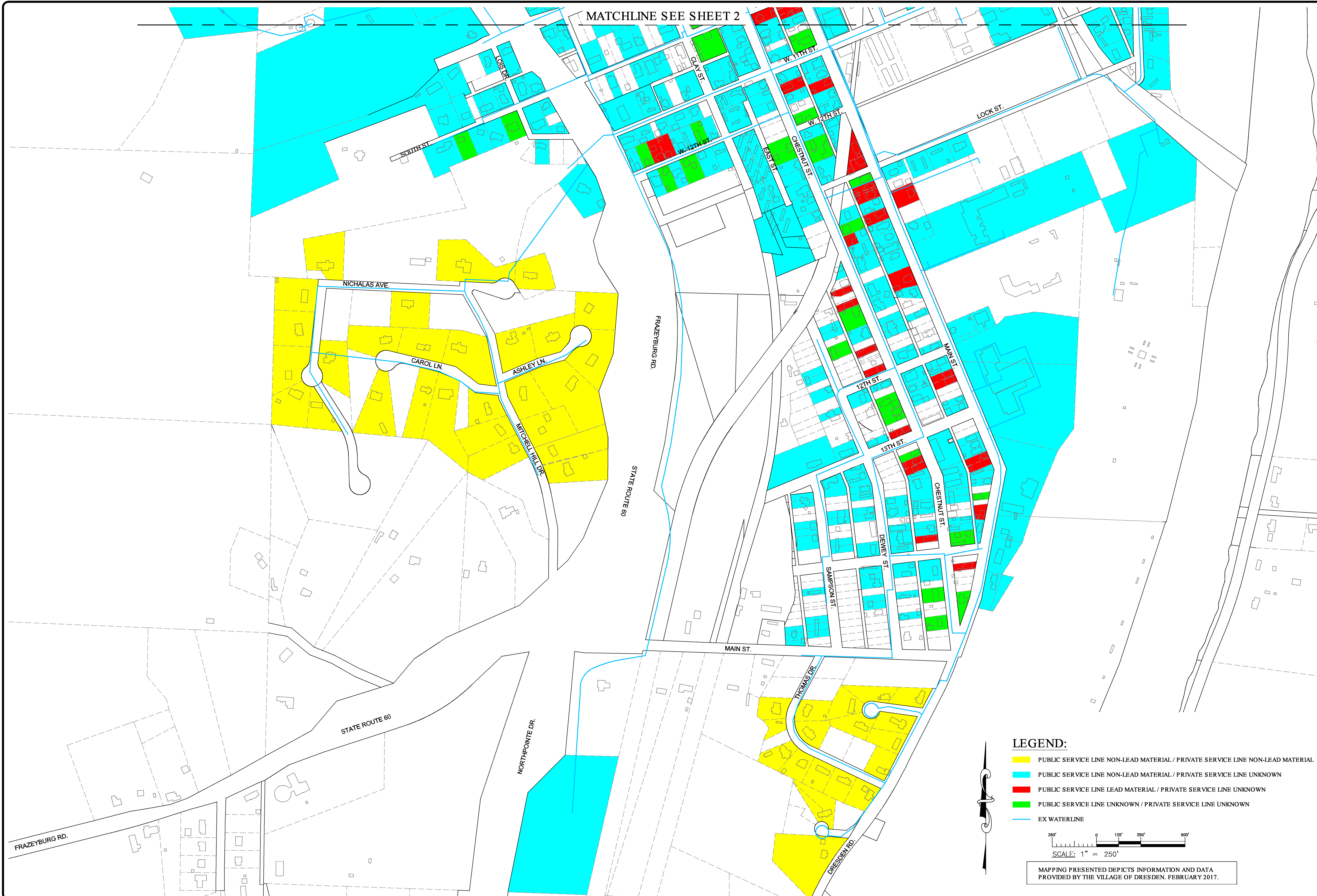
CLIENT: VILLAGE OF DRESDEN  
ADDRESS: 28 EAST EIGHTH STREET, DRESDEN, OH 43821  
LOCATION: MUSKINGUM COUNTY, OHIO

SCALE:			
AS NOTED			
DESIGN BY: —	DWN BY: AGD		
CHK'D BY: —	APPV'D BY: —		
COPYRIGHT © 2017 GGC ENGINEERS, INC.			

BUILDING  
PIPING/FIXTURE  
MATERIALS

SHT#	2 OF 3
PROJ#	17199 3/3/2017

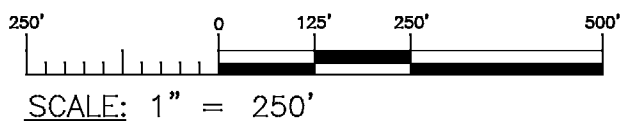




MATCHLINE SEE SHEET 2

LEGEND:

- PUBLIC SERVICE LINE NON-LEAD MATERIAL / PRIVATE SERVICE LINE NON-LEAD MATERIAL
- PUBLIC SERVICE LINE NON-LEAD MATERIAL / PRIVATE SERVICE LINE UNKNOWN
- PUBLIC SERVICE LINE LEAD MATERIAL / PRIVATE SERVICE LINE UNKNOWN
- PUBLIC SERVICE LINE UNKNOWN / PRIVATE SERVICE LINE UNKNOWN
- EX WATERLINE



MAPPING PRESENTED DEPICTS INFORMATION AND DATA PROVIDED BY THE VILLAGE OF DRESDEN, FEBRUARY 2017.



ENGINEERS

148 N HIGH STREET GAHANNA, OHIO 43230  
PHONE: 614-471-7310 FAX: 614-471-7320  
WWW.GGCENGINEERS.COM

--

--

VILLAGE OF DRESDEN  
LEAD SERVICE LINE & FIXTURE  
MAPPING PROJECT

CLIENT: VILLAGE OF DRESDEN  
ADDRESS: 28 EAST EIGHTH STREET, DRESDEN, OH 43821  
LOCATION: MUSKINGUM COUNTY, OHIO

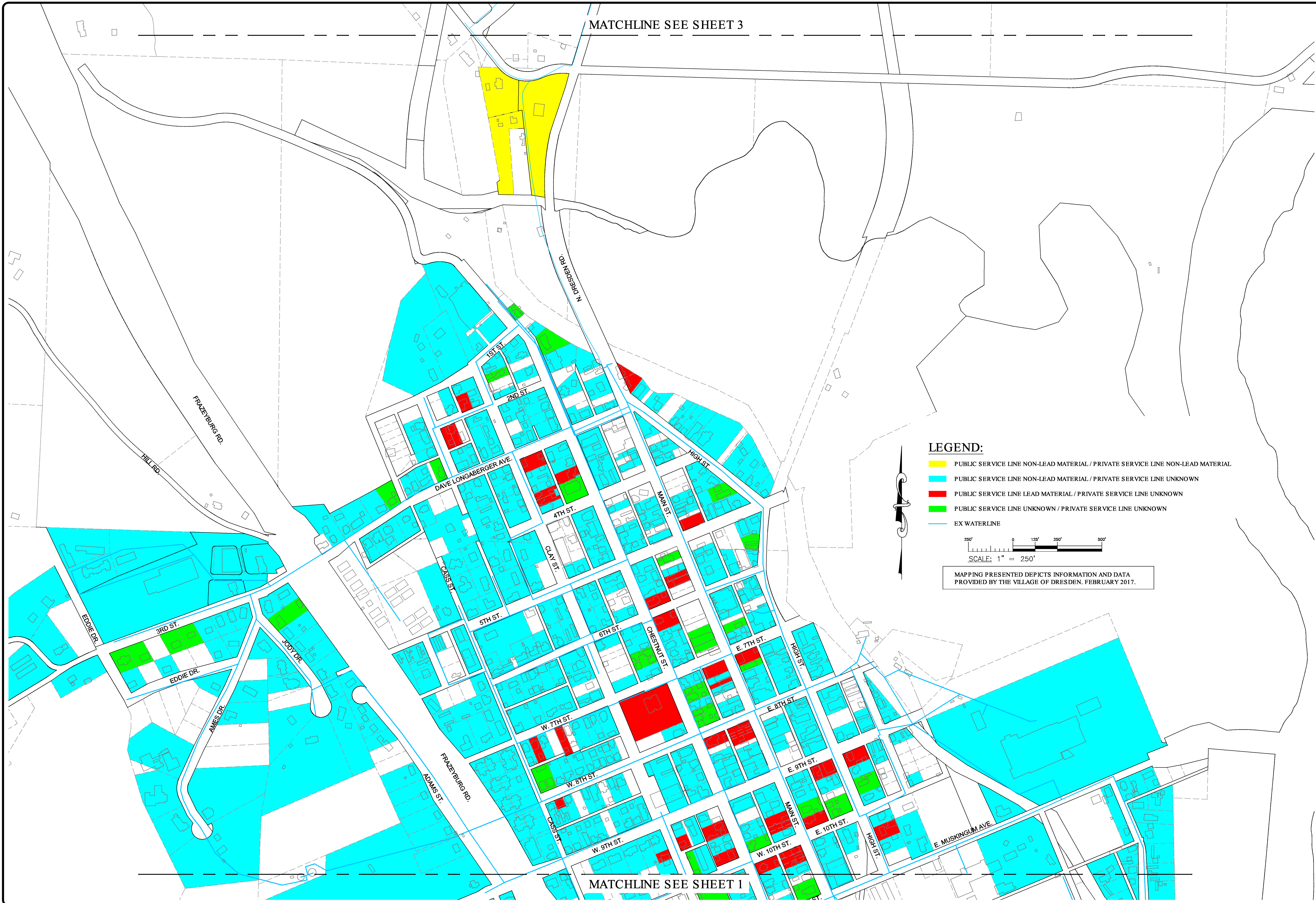
SCALE: AS NOTED		
DESIGN BY:	DWN BY:	AGD
CHK'D BY:	APPV'D BY:	
COPYRIGHT © 2017 GGC ENGINEERS, INC.		

SERVICE LINE MATERIALS

SHT#  
1 OF 3

PROJ# 17199 3/3/2017



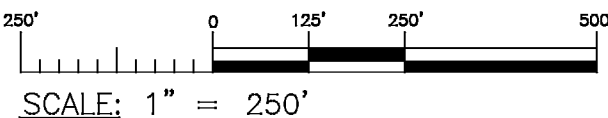


MATCHLINE SEE SHEET 3

MATCHLINE SEE SHEET 1

LEGEND:

- PUBLIC SERVICE LINE NON-LEAD MATERIAL / PRIVATE SERVICE LINE NON-LEAD MATERIAL
- PUBLIC SERVICE LINE NON-LEAD MATERIAL / PRIVATE SERVICE LINE UNKNOWN
- PUBLIC SERVICE LINE LEAD MATERIAL / PRIVATE SERVICE LINE UNKNOWN
- PUBLIC SERVICE LINE UNKNOWN / PRIVATE SERVICE LINE UNKNOWN
- EX WATERLINE



MAPPING PRESENTED DEPICTS INFORMATION AND DATA PROVIDED BY THE VILLAGE OF DRESDEN. FEBRUARY 2017.



E

N

G

I

N

E

E

R

S

148 N HIGH STREET, GAHANNA, OHIO 43230  
PHONE: 614-471-7310, FAX: 614-471-7320  
WWW.GGCENGINEERS.COM

REVISIONS

VILLAGE OF DRESDEN  
LEAD SERVICE LINE & FIXTURE  
MAPPING PROJECT

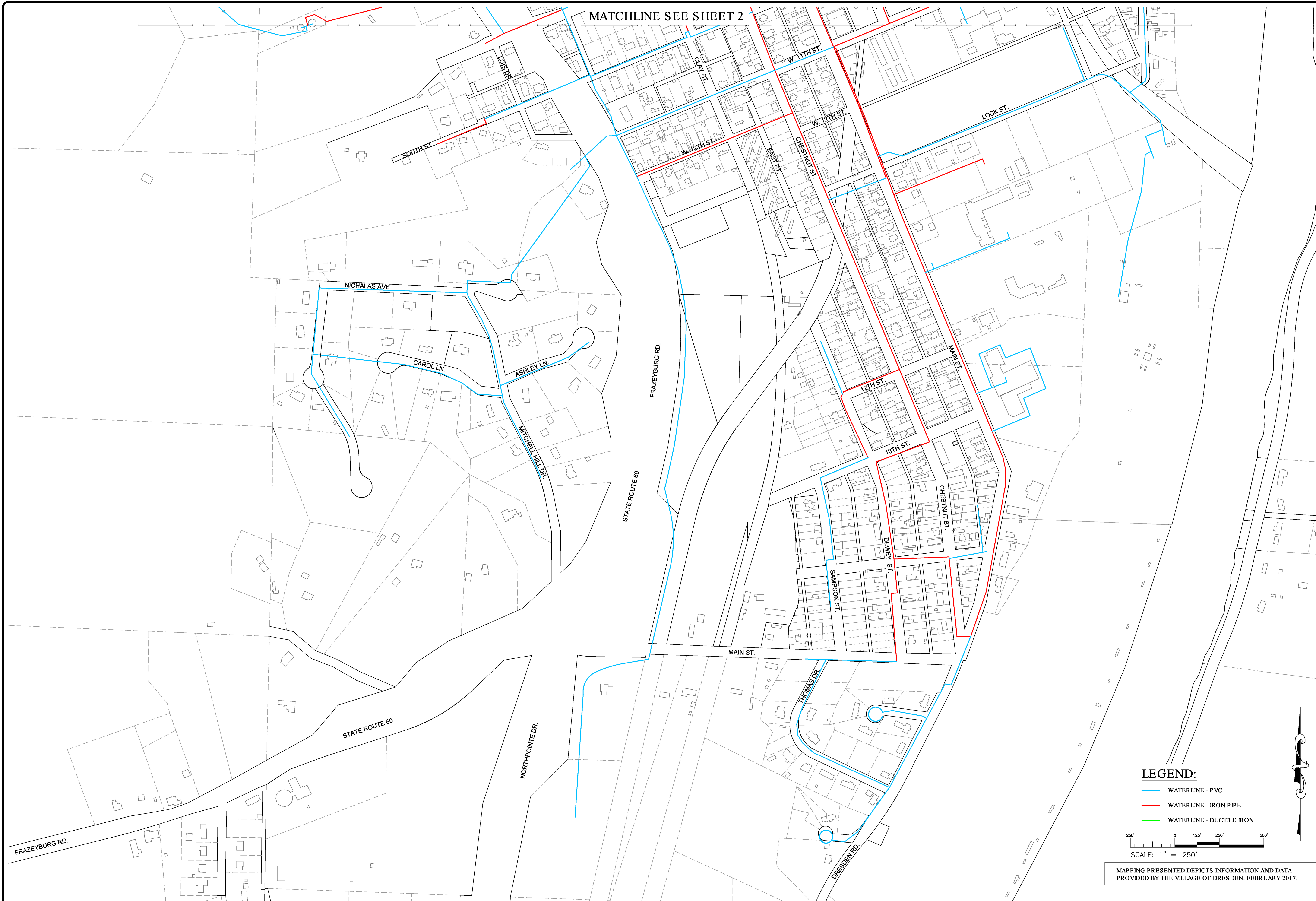
CLIENT: VILLAGE OF DRESDEN  
ADDRESS: 28 EAST EIGHTH STREET, DRESDEN, OH 43821  
LOCATION: MUSKINGUM COUNTY, OHIO

SCALE: AS NOTED			
DESIGN BY:	—	DWN BY:	AGD
CHK'D BY:	—	APPV'D BY:	—
COPYRIGHT © 2017 GGC ENGINEERS, INC.			

SERVICE LINE  
MATERIALS

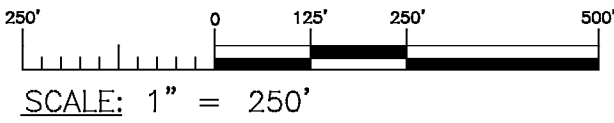
SHT#	2 OF 3
PROJ#	17199 3/3/2017





LEGEND:

- WATERLINE - PVC
- WATERLINE - IRON PIPE
- WATERLINE - DUCTILE IRON



MAPPING PRESENTED DEPICTS INFORMATION AND DATA PROVIDED BY THE VILLAGE OF DRESDEN, FEBRUARY 2017.



VILLAGE OF DRESDEN  
LEAD SERVICE LINE & FIXTURE  
MAPPING PROJECT

CLIENT: VILLAGE OF DRESDEN  
ADDRESS: 28 EAST EIGHTH STREET, DRESDEN, OH 43821  
LOCATION: MUSKINGUM COUNTY, OHIO

SCALE:  
AS NOTED

DESIGN BY:	DWN BY:	AGD
CHK'D BY:	APPV'D BY:	

COPYRIGHT © 2017 GGO ENGINEERS, INC.

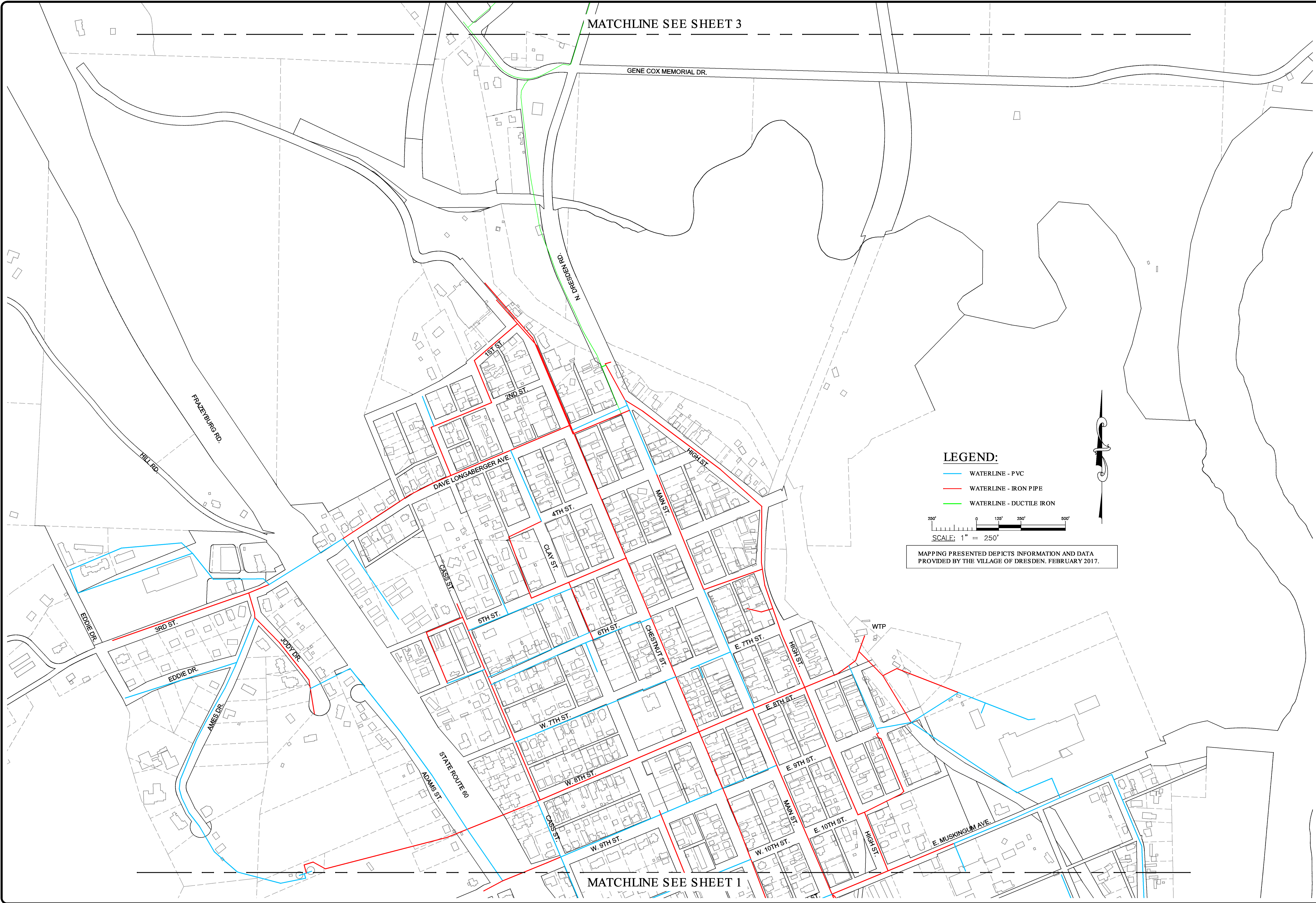
WATER MAINS  
WITH LEAD

SHT#

1 OF 3

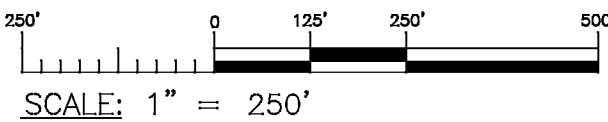
PROJ# 17199 3/3/2017





LEGEND:

- WATERLINE - PVC
- WATERLINE - IRON PIPE
- WATERLINE - DUCTILE IRON



MAPPING PRESENTED DEPICTS INFORMATION AND DATA PROVIDED BY THE VILLAGE OF DRESDEN. FEBRUARY 2017.



148 N HIGH STREET GAHANNA, OHIO 43230  
PHONE: 614-471-7310 FAX: 614-471-7320  
WWW.GEOENGINEERS.COM

REVISIONS

VILLAGE OF DRESDEN  
LEAD SERVICE LINE & FIXTURE  
MAPPING PROJECT

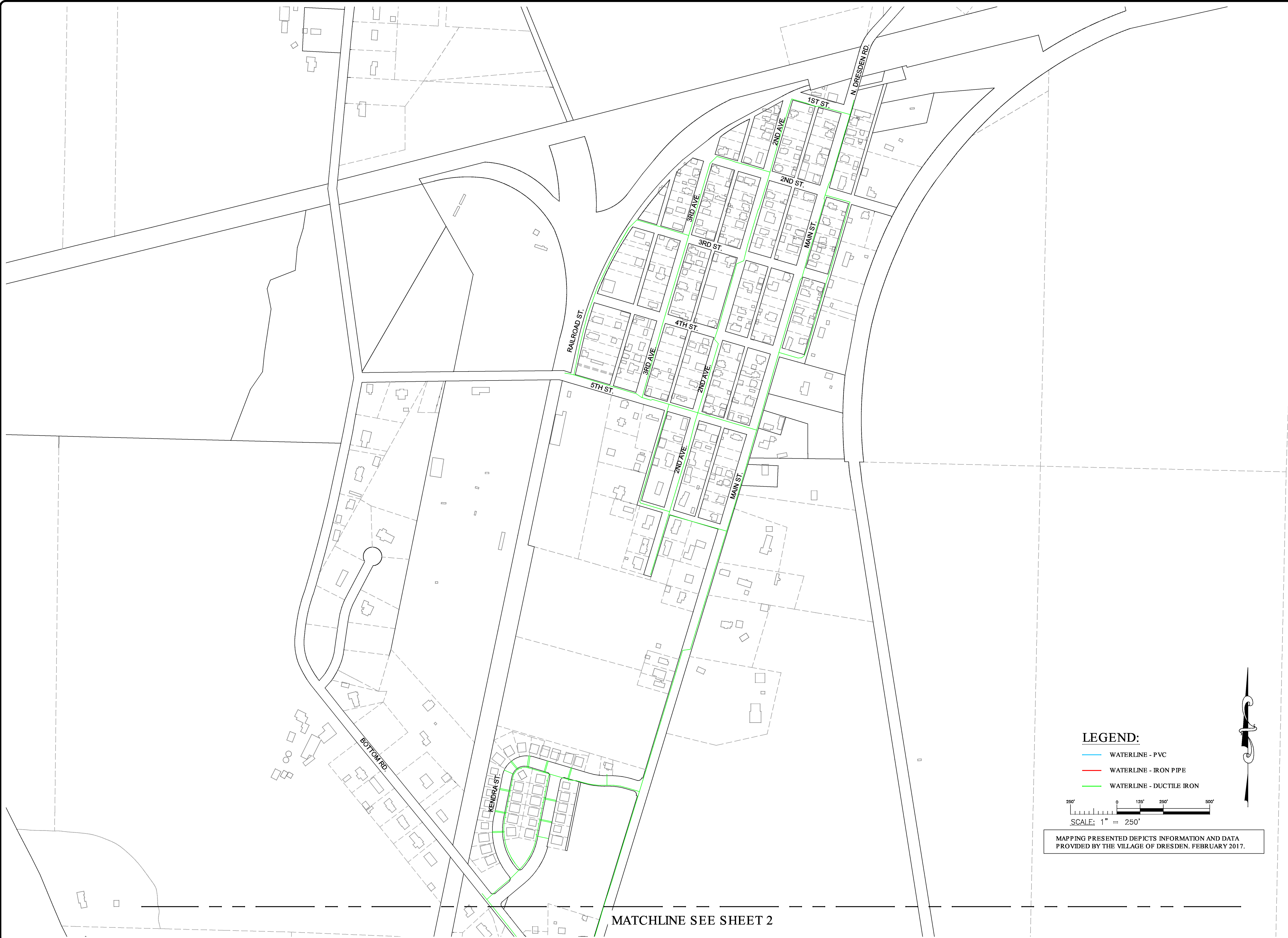
CLIENT: VILLAGE OF DRESDEN  
ADDRESS: 28 EAST EIGHTH STREET, DRESDEN, OH 43821  
LOCATION: MUSKINGUM COUNTY, OHIO

SCALE: AS NOTED			
DESIGN	BY:	DWN	BY: AGD
CHK'D	BY:	APPV'D	BY:
COPYRIGHT © 2017 GEO ENGINEERS, INC.			

WATER MAINS  
WITH LEAD

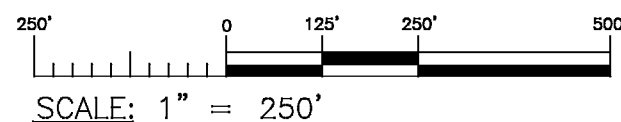
SHT#	2 OF 3
PROJ#	17199 3/3/2017





LEGEND:

- WATERLINE - PVC
- WATERLINE - IRON PIPE
- WATERLINE - DUCTILE IRON



MAPPING PRESENTED DEPICTS INFORMATION AND DATA PROVIDED BY THE VILLAGE OF DRESDEN, FEBRUARY 2017.



REVISIONS

VILLAGE OF DRESDEN  
LEAD SERVICE LINE & FIXTURE  
MAPPING PROJECT

CLIENT: VILLAGE OF DRESDEN  
ADDRESS: 28 EAST EIGHTH STREET, DRESDEN, OH 43821  
LOCATION: MUSKINGUM COUNTY, OHIO

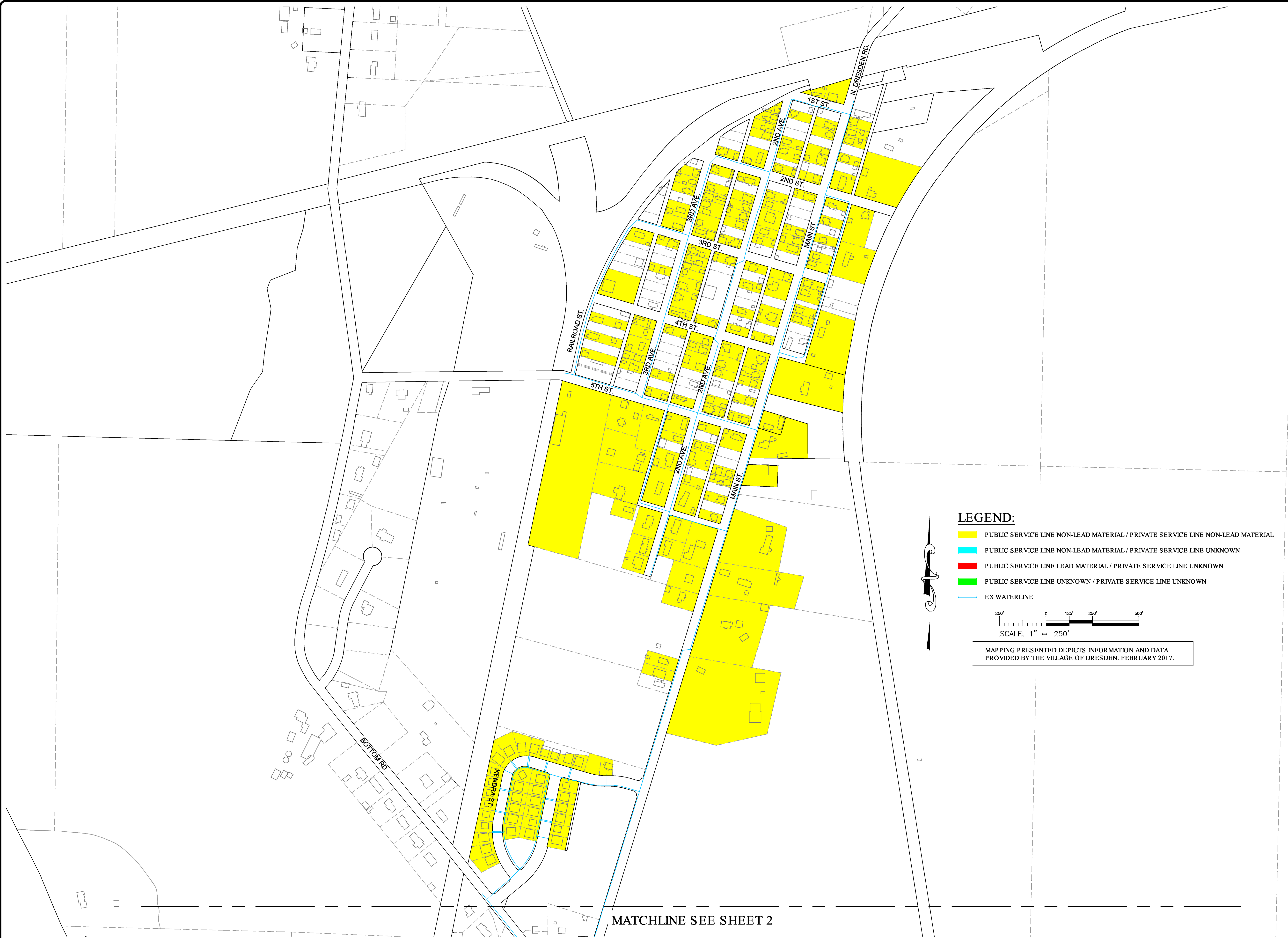
SCALE: AS NOTED			
DESIGN	—	DWN	AGD
BY:		BY:	
CHK'D	—	APPV'D	—
BY:		BY:	

COPYRIGHT © 2017 GGC ENGINEERS, INC.

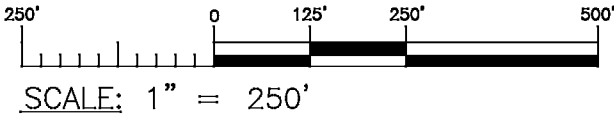
WATER MAINS  
WITH LEAD

SHT#	3 OF 3
PROJ#	17199 3/3/2017





- LEGEND:**
- PUBLIC SERVICE LINE NON-LEAD MATERIAL / PRIVATE SERVICE LINE NON-LEAD MATERIAL
  - PUBLIC SERVICE LINE NON-LEAD MATERIAL / PRIVATE SERVICE LINE UNKNOWN
  - PUBLIC SERVICE LINE LEAD MATERIAL / PRIVATE SERVICE LINE UNKNOWN
  - PUBLIC SERVICE LINE UNKNOWN / PRIVATE SERVICE LINE UNKNOWN
  - EX WATERLINE



MAPPING PRESENTED DEPICTS INFORMATION AND DATA PROVIDED BY THE VILLAGE OF DRESDEN, FEBRUARY 2017.

VILLAGE OF DRESDEN  
LEAD SERVICE LINE & FIXTURE  
MAPPING PROJECT

CLIENT: VILLAGE OF DRESDEN  
ADDRESS: 28 EAST EIGHTH STREET, DRESDEN, OH 43821  
LOCATION: MUSKINGUM COUNTY, OHIO

SCALE: AS NOTED		
DESIGN BY: —	DWN BY: AGD	
CHK'D BY: —	APPV'D BY: —	
COPYRIGHT © 2017 GGC ENGINEERS, INC.		

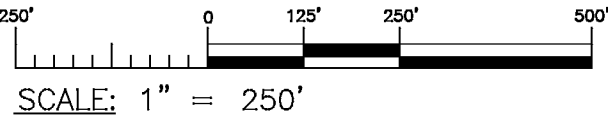
SERVICE LINE  
MATERIALS

SHT#	3 OF 3
PROJ#	17199 / 3/3/2017





- LEGEND:**
- AT HIGHER RISK FOR CONTAINING FIXTURES W/ LEAD CONTENT > 8% (PRE-1998)
  - AT RISK FOR CONTAINING FIXTURES W/ LEAD CONTENT 0.25% < Pb < 8% (2014-1998)
  - AT LOW RISK FOR CONTAINING FIXTURES W/ LEAD CONTENT > 0.25% (POST 2014)
  - EX WATERLINE



MAPPING PRESENTED DEPICTS INFORMATION AND DATA PROVIDED BY THE VILLAGE OF DRESDEN, FEBRUARY 2017.

BUILDINGS IN OHIO BUILT PRIOR TO 1998 OR THAT USE PLUMBING MATERIAL OR SOLDER MANUFACTURED BEFORE 1998 MAY HAVE MATERIALS WITH GREATER THAN 8% LEAD AND ARE AT A HIGHER RISK OF CONTRIBUTING LEAD TO THE DRINKING WATER THAN MATERIALS MANUFACTURED AFTER 1998. IN ADDITION, BUILDINGS BUILT AND PLUMBING MATERIALS MANUFACTURED AFTER 2014 WERE REQUIRED TO HAVE LESS THAN 0.25% LEAD BY WEIGHT AND HAVE THE LOWEST RISK FOR CONTRIBUTING LEAD TO THE DRINKING WATER. IT SHOULD BE NOTED HOWEVER THAT, ALTHOUGH PROHIBITED, SOME USE OF LEADED SOLDER OR LEADED COMPONENTS MAY HAVE OCCURRED AFTER THE PROHIBITIONS BECAME EFFECTIVE.

148 N HIGH STREET GAHANNA, OHIO 43220  
PHONE: 614-471-7310 FAX: 614-471-7320  
WWW.GGCENGINEERS.COM

--

REVISIONS
-----------

VILLAGE OF DRESDEN  
LEAD SERVICE LINE & FIXTURE  
MAPPING PROJECT

CLIENT: VILLAGE OF DRESDEN  
ADDRESS: 28 EAST EIGHTH STREET, DRESDEN, OH 43821  
LOCATION: MUSKINGUM COUNTY, OHIO

SCALE: AS NOTED		
DESIGN BY: —	DWN BY: AGD	
CHK'D BY: —	APPV'D BY: —	
COPYRIGHT © 2017 GGC ENGINEERS, INC.		

BUILDING  
PIPING/FIXTURE  
MATERIALS

SHT#  
3 OF 3

PROJ# 17199 3/3/2017