

# LEAD MAPPING

GRILL ELEMENTARY School  
6125 Kungje Rd.  
New FRANKLIN, Ohio 44716  
330 825 2677

OH 7735012  
Facility ID 7758740

William L. Roth Sr  
OPERATOR

John M. Roth & Sons Inc  
DBA Mt Dependable pump  
6200 Manchester Rd.  
New Franklin Ohio 44716

330 882 4111  
FAX 330 882 6778  
cell 330 819 9638  
E. Mail Mt Dependable pump @ SBC Global. Net

**\* IMPORTANT Note!** MAY 31 2017 will be  
The last of The School year  
The school will be TORN Down.

## GRPII School

This School is going to be Torn Down  
AFTER This School Term

School is approximately 80 year old  
plumbing is almost all copper.

There is Every chance That, plumbing  
is lead soldered. The EPA HAS  
Recognized This Probability and  
ordered The Feeding of Blend of  
poly + ortho phosphate Blend.

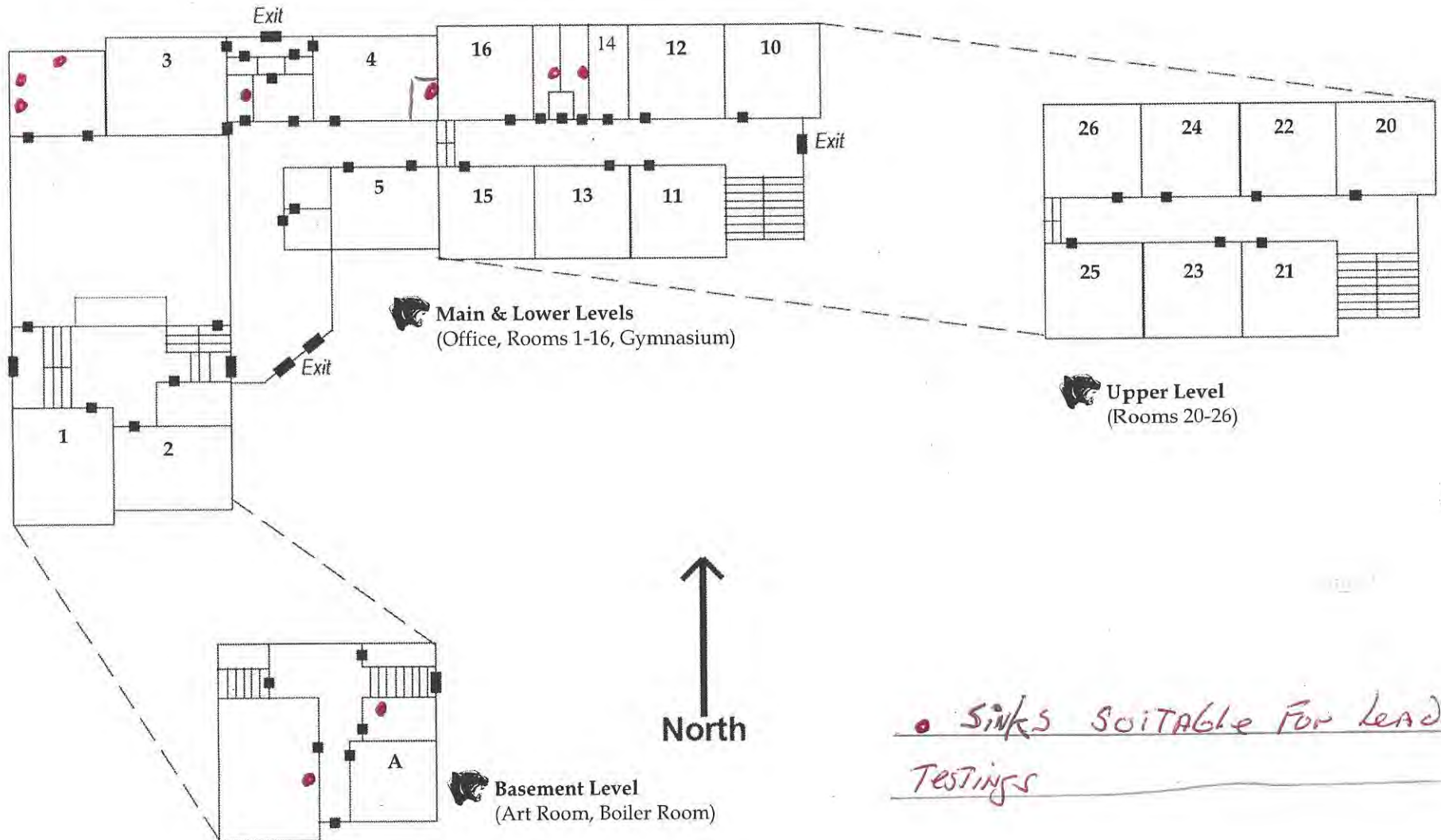
Current Lead Testing Shows Non Detect  
w/ The Exception of 1 Sink in The  
kitchen - we have had This Sink  
Flushed Daily That Reading WAS  
6.9



# GRILL ELEMENTARY SCHOOL

6125 Kungle Road, New Franklin, Ohio 44216 | PH 330-825-2677 | FAX 330-706-1027

*Norton City Schools*



• Sinks Suitable For Lead  
TESTINGS