



BLOOMFIELD-MESPO LOCAL SCHOOL DISTRICT

2077 Park Road West

North Bloomfield, Ohio 44450

Mr. Russell McQuaide, Superintendent 440-685-4711

www.bloomfieldmesposchools.org Email: russell.mcquaide@neomin.org

Ohio EPA

michael.deal@epa.ohio.gov

sharon.hobart@epa.oh.gov

Ohio Department of Health

BEH@odh.ohio.gov

Ohio Department of Jobs and Family Services

angela.kaiser@jfs.ohio.gov

March 9, 2017

Re: Mesopotamia Elementary School - Mapping of Lead and Copper Sample Sites

To the Ohio EPA, Ohio Department of Health, and Ohio Department of Jobs and Family Services,

Mesopotamia Elementary School is located at 4466 Kinsman Road, Mesopotamia, OH 44439. The school building is a public water system (PWS) and the PWS ID is OH7839912. The service line to the building is copper. Please find the following included:

- Spreadsheet for Lead and Copper Sample Sites
- Floor Plan showing the location of each sample site.

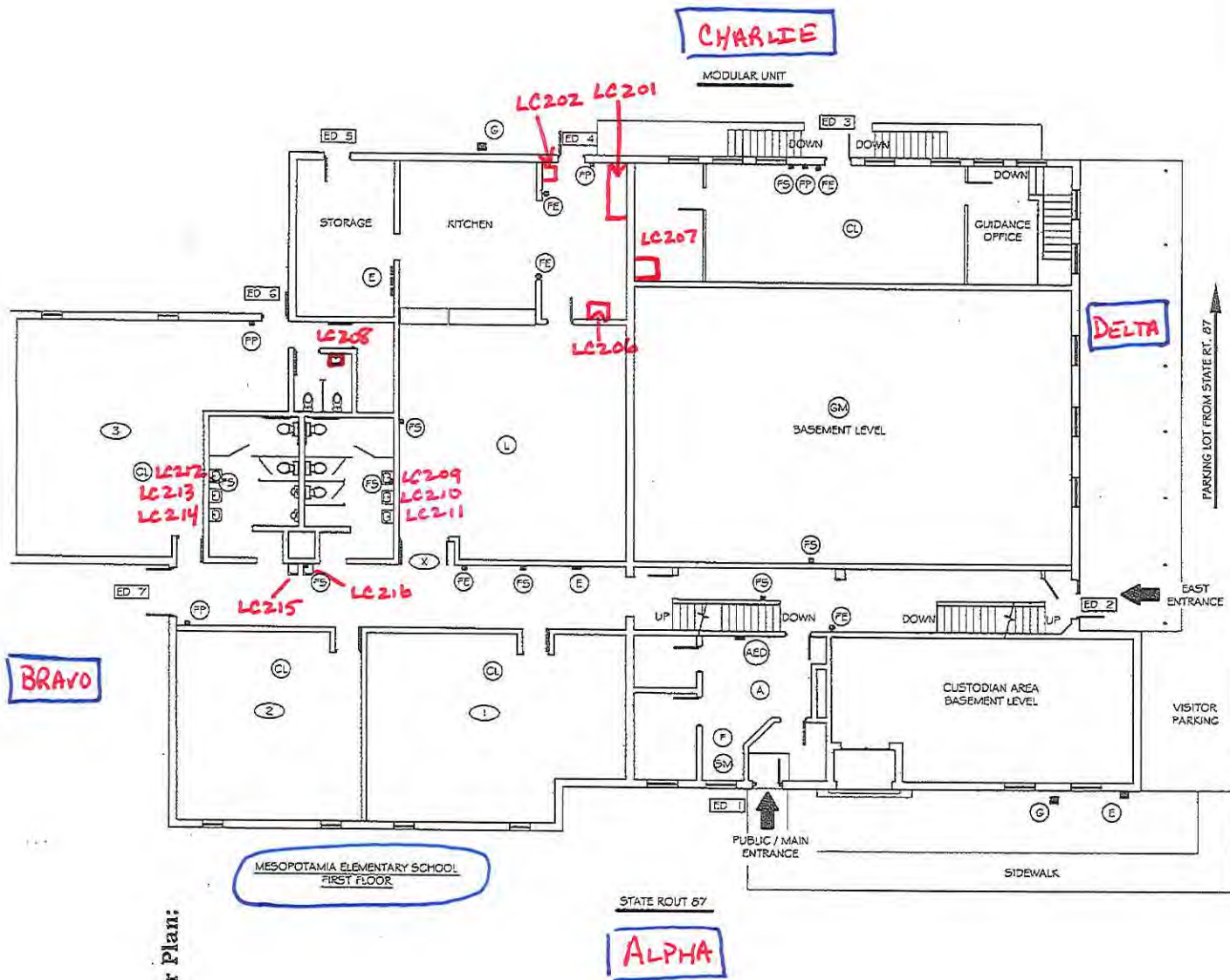
The floor plan, which shows the locations serves as the narrative. The above-mentioned spreadsheet indicates the type of interior plumbing for each sample location. All copper and galvanized plumbing was installed prior to 1982. The electronic spreadsheet is also attached.

The phone number for Mesopotamia Elementary School is (440)693-4125. You may also contact me at (440)685-4711 or email me at russell.mcquaide@neomin.org if you have any questions or concerns regarding this submission. Thank you and have a good day.

Sincerely,

Mr. Russell McQuaide

Cc: Mrs. Kerry Kern, Head Custodian
Mr. Johnny Brown, Operator



Floor Plan:

MESOPOTAMIA ELEMENTARY SCHOOL
FIRST FLOOR

STATE ROUTE 87

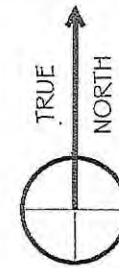
ALPHA

LEGEND

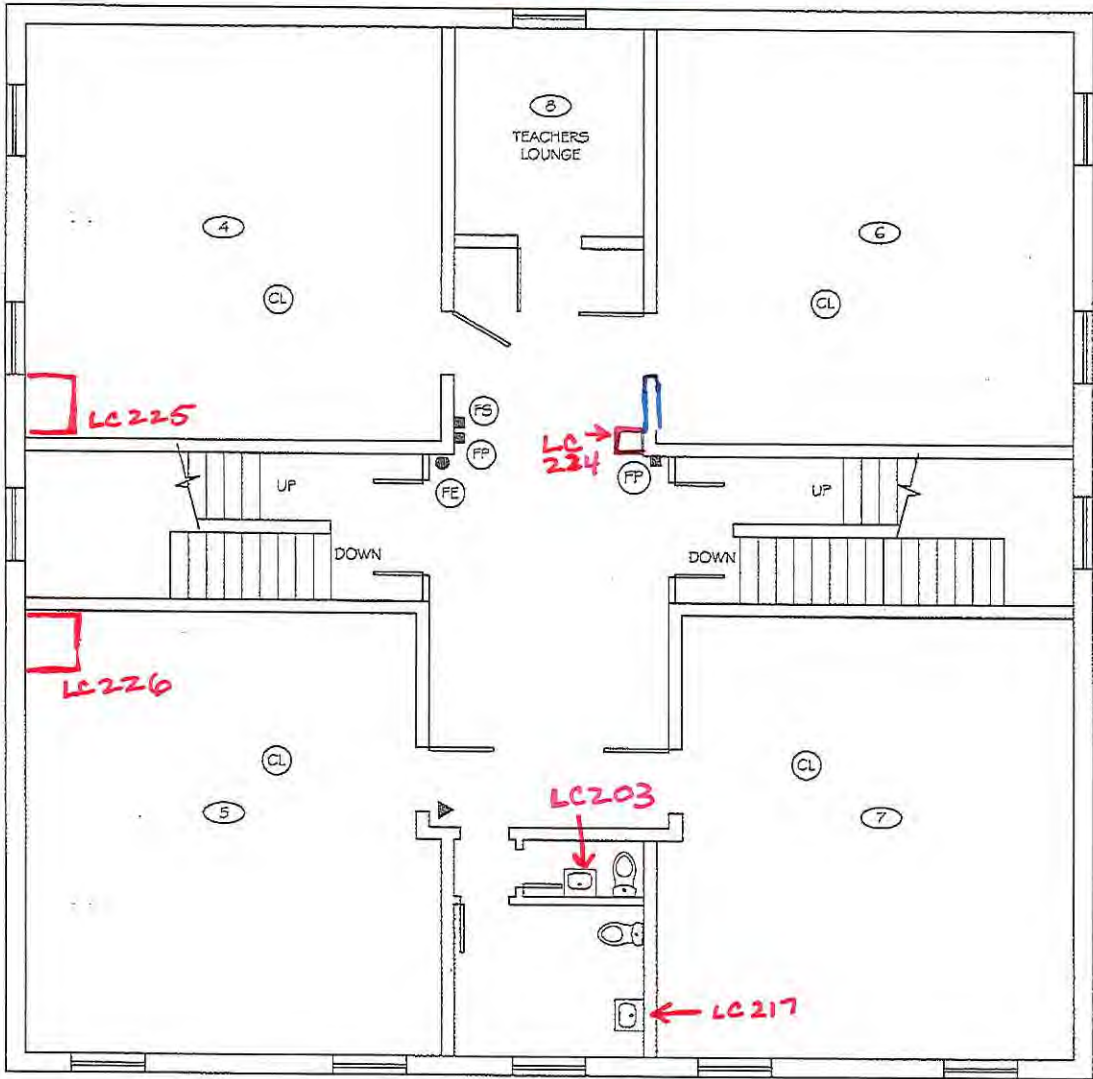
- (AED) LOCATION OF AED
- (E) ELECTRICAL SHUTOFF
- (F) FIRE ALARM PANEL
- (FP) FIRE ALARM PULL STATION
- (FS) FIRE ALARM HORN / STROBE
- (G) GAS SHUTOFF
- (W) WATER SHUTOFF
- (A) ADMINISTRATION AREA
- (R) AREA OF REFUGE
- (▲) CAMARA LOCATION
- (SM) SECURITY MONITORING PANEL
- (FE) FIRE EXTINGUISHER
- (RA) ROOF ACCESS
- (IOI) ROOM NUMBERS
- (SE) SERVICE ENTRANCE
- ED 1 EXTERIOR DOOR
- (L) LUNCH AREA
- (GM) GYMNASIUM
- (ST) STAGE
- (C) COMMON AREA
- (CL) CLASS ROOM

BLOOMFIELD - MESPO LOCAL SCHOOLS
MESOPOTAMIA ELEMENTARY SCHOOL
4466 KINSMAN RD.
MESOPOTAMIA, OHIO 44439
FACILITY SAFETY PLAN
FIRST FLOOR

IRN 024331
BUILDING PHONE NUMBER: 440-693-4125



CHARLIE



MESOPOTAMIA ELEMENTARY SCHOOL
SECOND FLOOR

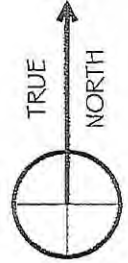
ALPHA

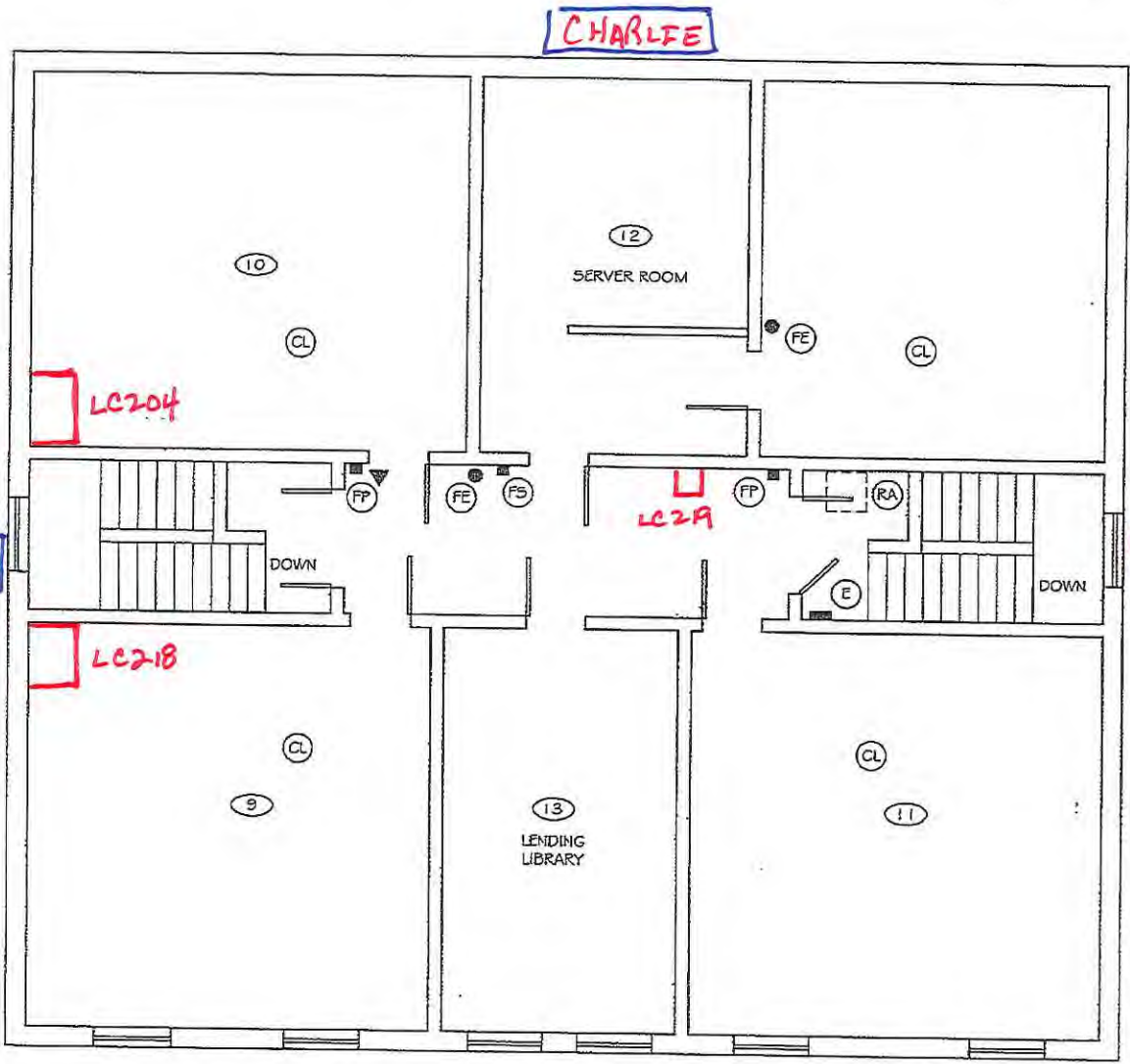
LEGEND

- (AED) LOCATION OF AED
- (E) ELECTRICAL SHUTOFF
- (F) FIRE ALARM PANEL
- (FP) FIRE ALARM PULL STATION
- (FS) FIRE ALARM HORN / STROBE
- (G) GAS SHUTOFF
- (W) WATER SHUTOFF
- (A) ADMINISTRATION AREA
- (R) AREA OF REFUGE
- (▲) CAMARA LOCATION
- (SM) SECURITY MONITORING PANEL
- (FE) FIRE EXTINGUISHER
- (RA) ROOF ACCESS
- (|O|) ROOM NUMBERS
- (SE) SERVICE ENTRANCE
- [ED |] EXTERIOR DOOR
- (L) LUNCH AREA
- (GM) GYMNASIUM
- (ST) STAGE
- (C) COMMON AREA
- (CL) CLASS ROOM

BLOOMFIELD - MESPO LOCAL SCHOOLS
MESOPOTAMIA ELEMENTARY SCHOOL
4466 KINSMAN RD.
MESOPOTAMIA, OHIO 44439
FACILITY SAFETY PLAN
SECOND FLOOR

IRN 02433 I
BUILDING PHONE NUMBER: 440-693-4125





CHARLIE

BRAVO

DELTA

MESOPOTAMIA ELEMENTARY SCHOOL
THIRD FLOOR

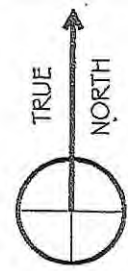
ALPHA

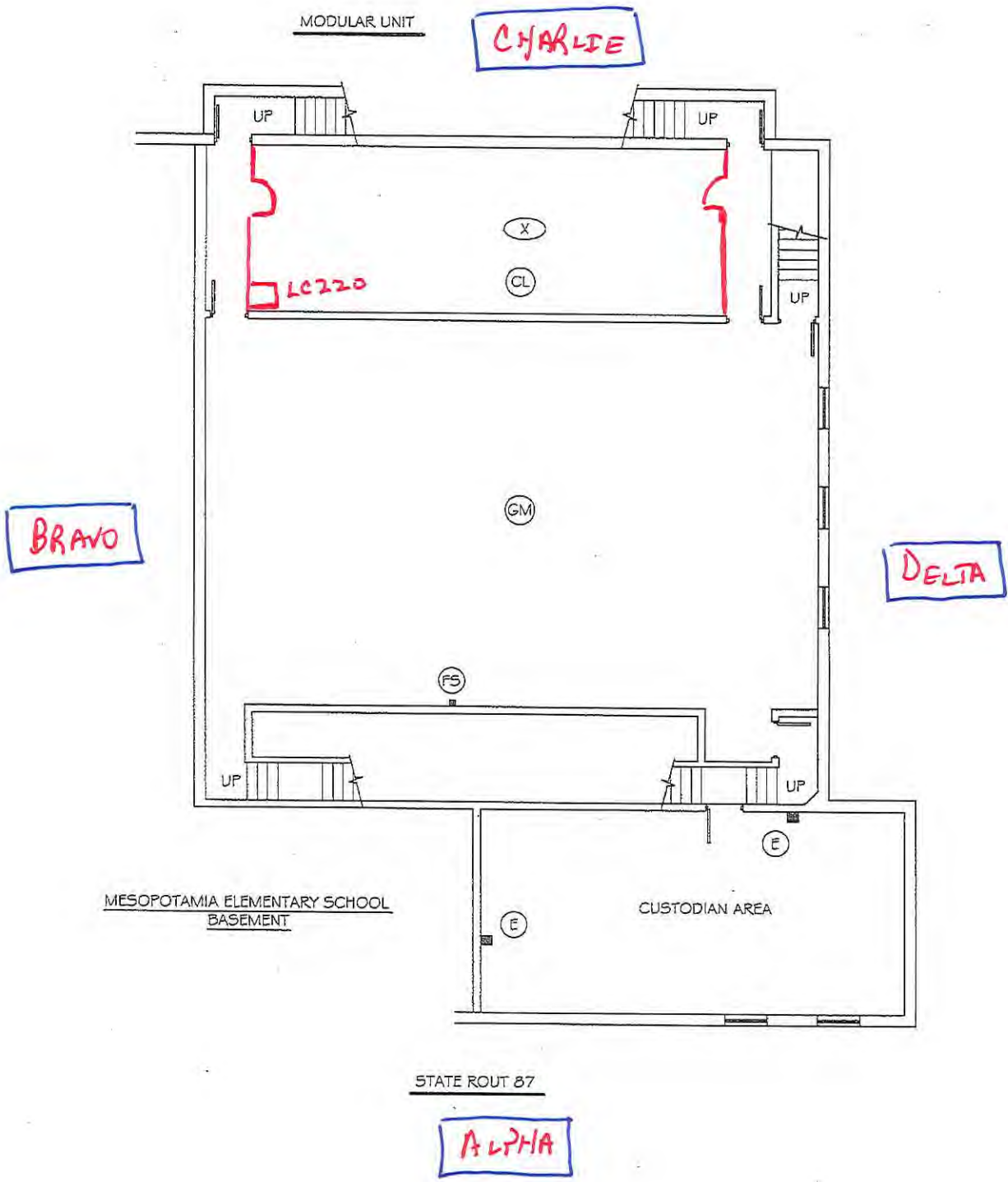
LEGEND

- (AED) LOCATION OF AED
- (E) ELECTRICAL SHUTOFF
- (F) FIRE ALARM PANEL
- (FP) FIRE ALARM PULL STATION
- (FS) FIRE ALARM HORN / STROBE
- (G) GAS SHUTOFF
- (W) WATER SHUTOFF
- (A) ADMINISTRATION AREA
- (R) AREA OF REFUGE
- ▲ CAMARA LOCATION
- (SM) SECURITY MONITORING PANEL
- (FE) FIRE EXTINGUISHER
- (RA) ROOF ACCESS
- (IOI) ROOM NUMBERS
- (SE) SERVICE ENTRANCE
- ED I EXTERIOR DOOR
- (L) LUNCH AREA
- (GM) GYMNASIUM
- (ST) STAGE
- (C) COMMON AREA
- (CL) CLASS ROOM

BLOOMFIELD - MESPO LOCAL SCHOOLS
MESOPOTAMIA ELEMENTARY SCHOOL
4466 KINSMAN RD.
MESOPOTAMIA, OHIO 44439
FACILITY SAFETY PLAN
THIRD FLOOR

IRN 024331
BUILDING PHONE NUMBER: 440-693-4125



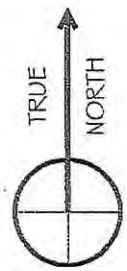


LEGEND

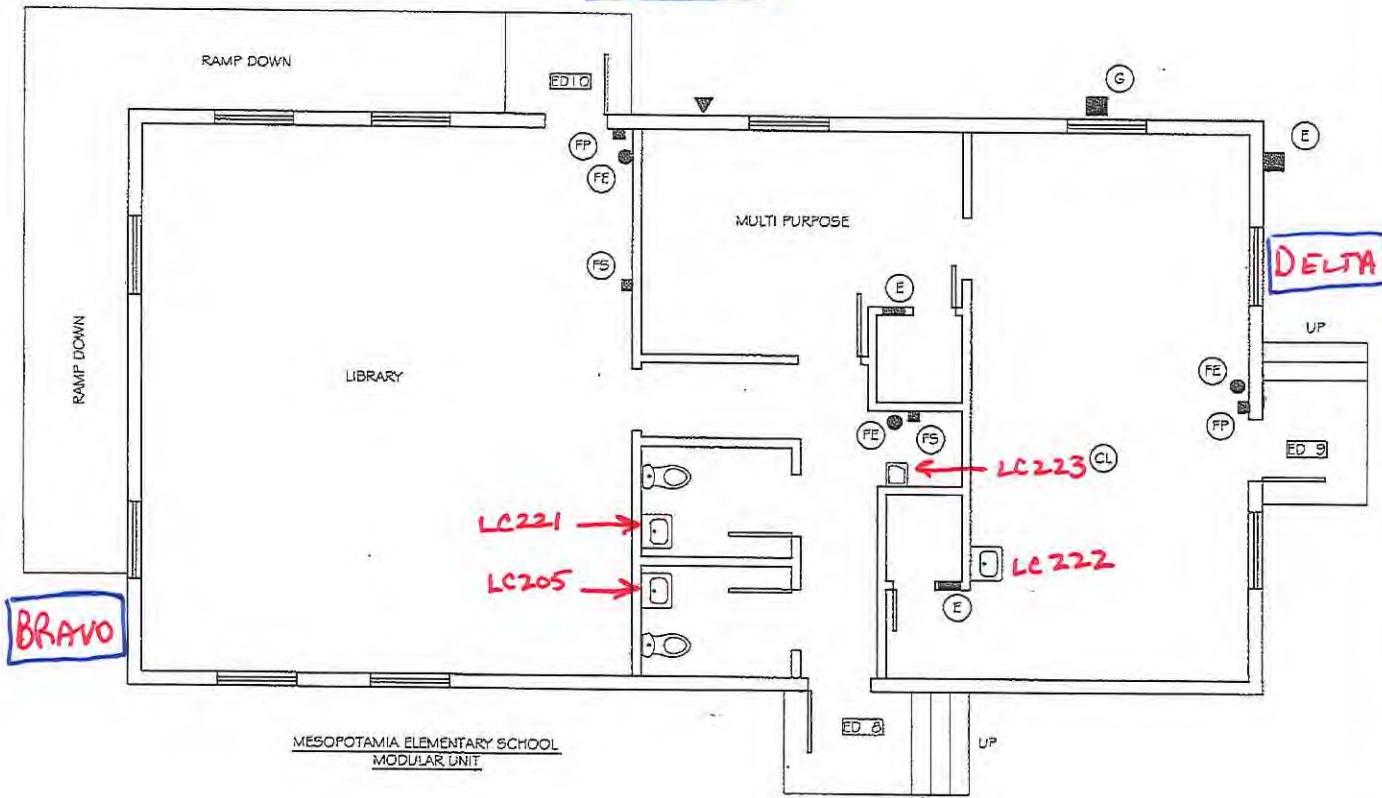
- (AED) LOCATION OF AED
- (E) ELECTRICAL SHUTOFF
- (F) FIRE ALARM PANEL
- (FP) FIRE ALARM PULL STATION
- (FS) FIRE ALARM HORN / STROBE
- (G) GAS SHUTOFF
- (W) WATER SHUTOFF
- (A) ADMINISTRATION AREA
- (R) AREA OF REFUGE
- (▲) CAMARÁ LOCATION
- (SM) SECURITY MONITORING PANEL
- (FE) FIRE EXTINGUISHER
- (RA) ROOF ACCESS
- (IOI) ROOM NUMBERS
- (SE) SERVICE ENTRANCE
- ED 1 EXTERIOR DOOR
- (L) LUNCH AREA
- (GM) GYMNASIUM
- (ST) STAGE
- (C) COMMON AREA
- (CL) CLASS ROOM

BLOOMFIELD - MESPO LOCAL SCHOOLS
 MESOPOTAMIA ELEMENTARY SCHOOL
 4466 KINSMAN RD.
 MESOPOTAMIA, OHIO 44439
 FACILITY SAFETY PLAN
 BASEMENT FLOOR

IRN 024331
 BUILDING PHONE NUMBER: 440-693-4125



CHARLIE



BRAVO

DELTA

ALPHA

LEGEND

- (AED) LOCATION OF AED
- (E) ELECTRICAL SHUTOFF
- (F) FIRE ALARM PANEL
- (FP) FIRE ALARM PULL STATION
- (FS) FIRE ALARM HORN / STROBE
- (G) GAS SHUTOFF
- (W) WATER SHUTOFF
- (A) ADMINISTRATION AREA
- (R) AREA OF REFUGE
- (▲) CAMARA LOCATION
- (SM) SECURITY MONITORING PANEL
- (FE) FIRE EXTINGUISHER
- (RA) ROOF ACCESS
- (IOI) ROOM NUMBERS
- (SE) SERVICE ENTRANCE
- (ED I) EXTERIOR DOOR
- (L) LUNCH AREA
- (GM) GYMNASIUM
- (ST) STAGE
- (C) COMMON AREA
- (CL) CLASS ROOM

BLOOMFIELD - MESPO LOCAL SCHOOLS
 MESOPOTAMIA ELEMENTARY SCHOOL
 4466 KINSMAN RD.
 MESOPOTAMIA, OHIO 44439
 FACILITY SAFETY PLAN
 MODULAR UNIT

IRN 024331
 BUILDING PHONE NUMBER: 440-693-4125

