

# Walnut Creek, OH (PWS 3801512)

## Public Water System Lead (Pb) Components

### Prepared February 2017

To comply with Section 6109.21 of the Ohio Revised Code, enacted in September 2016, the Walnut Creek Water Company in Holmes County, Ohio has created the following report and attached maps to identify known and potential components of its public water system that contain lead (Pb).

RCAP staff and the Walnut Creek Water Company met on February 24<sup>th</sup>, 2017 to review possible presence of lead in the service area. Few applicable historical maintenance, or operational records, tap cards were available to identify lead component locations. However, original 1951 construction plans detailing typical meter installation were available. Locations where service line components have been replaced, and locations where lead components may still be used, were identified by Walnut Creek Water and recorded in a GIS database.

### Service Lines and Ownership

The Walnut Creek Water Department distributes water to approximately 330 parcels. The system owns and maintains service lines from the water distribution main to the curb stop valve. The length of service line from the curb stop valve into the meter is owned and maintained privately by the consumer account holder. All of the publicly owned portions of service lines are copper. The private portions are a mix of copper, CTS plastic, and galvanized.

While the water distribution system existed before official lead mandates were put in place, there are not believed to be any lead service lines within the Walnut Creek water distribution system. The original engineering prints for the system refer to the use of type K copper for private side piping in installation of domestic meters (See *Plans For Water Mains, 1951*). The system has grown from about 170 customers in 1992 to around 350 currently. During this time approximately 40 old service lines have been replaced and none of them were found to be lead pipe. The old service lines that were replaced were copper, or in rare cases, galvanized. Walnut Creek Water does not currently have a specific regulation that mandates copper or plastic must be used, but it is the operating process to install these types of pipe when new services go in.

## **Distribution System**

Walnut Creek Water produces treated ground water and distributes potable water through approximately 9.7 miles of water main lines. The water distribution system was constructed between 1948 and 2016. The system was constructed using cast iron, PVC, and a small section of Transite water pipe (all piping between 2" and 8"). Much of the original cast iron has been replaced and the system is now majority PVC.

Replacement of more cast iron is scheduled for summer of 2017.

## **Water Meters and Indoor Plumbing**

None of the customer water meters are believed to contain lead. While some of the meters are original to the 1970s, many have been rebuilt with plastic and magnetic components. Newer meters (replaced or installed within the last two – three years) are complete plastic construction.

Buildings in Ohio built prior to 1998 or that use plumbing material or solder manufactured before 1998 may have materials with greater than 8% lead and are at a higher risk of contributing lead to the drinking water than materials manufactured after 1998. Buildings built and plumbing materials manufactured after 2014 were required to have less than 0.25% lead by weight and have the lowest risk for contributing lead to the drinking water.

It should be noted however that, although prohibited, some use of leaded solder or leaded components may have occurred after the prohibitions became effective. According to county auditor records, 0 structures have been built since 2014. Therefore, nearly all buildings in Walnut Creek may have some percentage of lead in the plumbing components except those that used all plastic materials.

## **Customer Self-Reporting**

The information on this map regarding privately owned service lines is based on the limited information from the water system staff and Holmes County building and parcel data. Property owners are encouraged to inspect their own service lines entering the building if these are in anyway exposed, and notify the Walnut Creek Water Department if they have determined whether or not a lead service line exists. Please contact the Water Billing Clerk by emailing [wewaterco@yahoo.com](mailto:wewaterco@yahoo.com) or [stanarrow10@gmail.com](mailto:stanarrow10@gmail.com) or calling (330) 231-7032. A representative from the water department will contact you to confirm and update this information for the next map release.

## Contacts and Resources

If you have questions about known and potential lead components within the Walnut Creek Public Water System, please contact:

Walnut Creek Water Department

Phone – (330) 231-7032

Email – [wcwaterco@yahoo.com](mailto:wcwaterco@yahoo.com)

For more information about lead service lines and their removal, we recommend the following resources:

- **The Lead Service Line Replacement Collaborative**  
<http://www.lslr-collaborative.org/resources-for-concerned-consumers.html>
- **Ohio EPA 'Learn About Lead' page**  
<http://epa.ohio.gov/pic/lead.aspx>
- **US EPA Lead in Drinking Water Information Page**  
<https://www.epa.gov/ground-water-and-drinking-water/basic-information-about-lead-drinking-water>

# Walnut Creek Public Water Distribution System Lead Components and Lead Service Lines Map

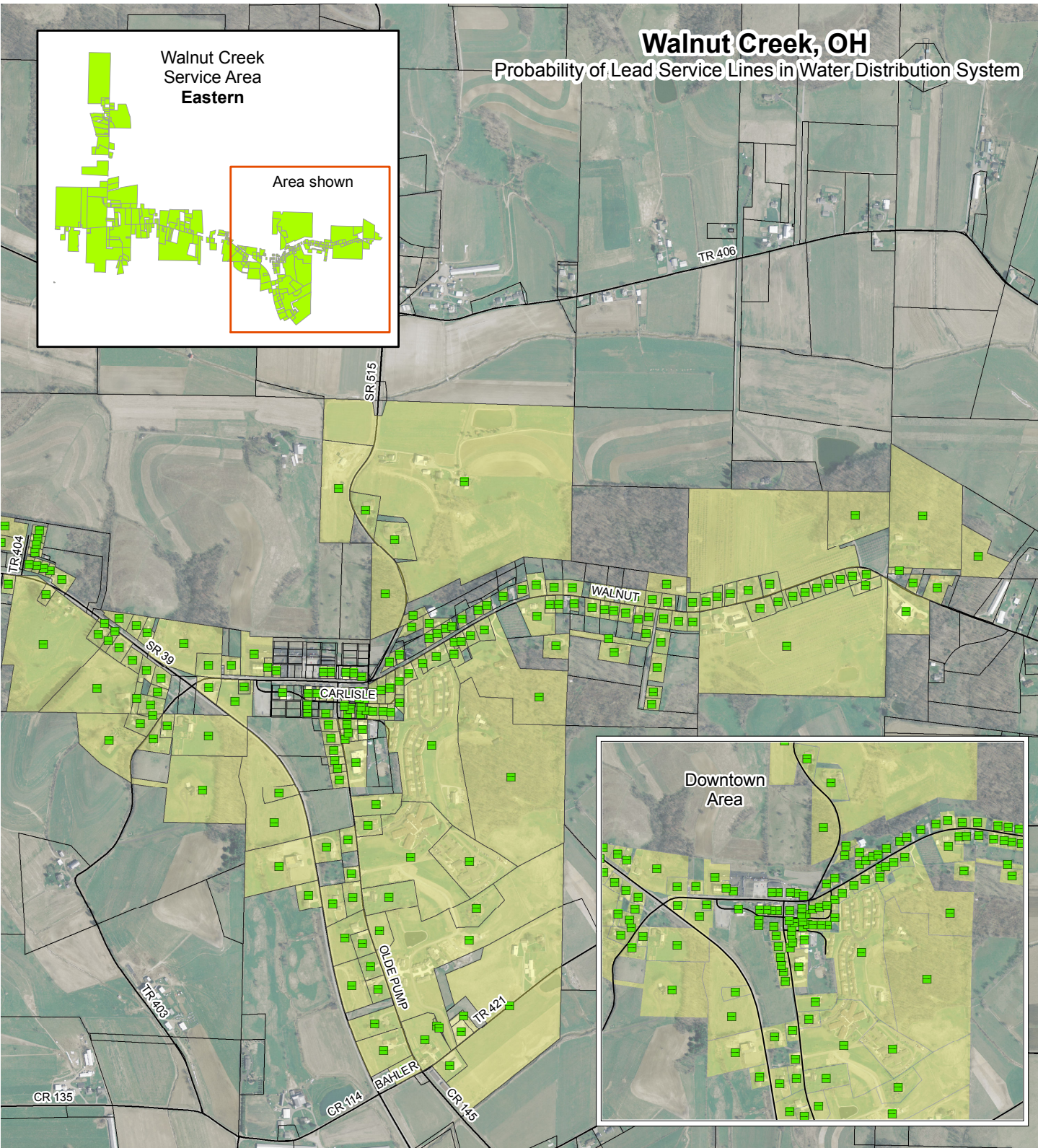
*The following map(s) does not verify the presence of lead in any of the lines or structures shown. This map only shows the probable or possible locations based on the year that the structure was built, historical maintenance and operation records, and customer or utility staff verification.*

*This map is not intended for design engineering, surveying, or construction purposes. Information and data contained or accessed within this map emanates from various public and private sources and may contain errors and omissions*

*All data, information and documentation within this map are provided "as is" without warranty of any kind, either expressed or implied. The suitability of the data and information contained in this map is not guaranteed, and the user assumes all risk for such uses. WSOS Community Action and its employees, affiliates, agents and licensors cannot and do not warrant the accuracy, completeness, non-infringement, merchantability or fitness of any information contained within this map.*

*GIS Data Sources: OGRIP, OSIP, Holmes County Auditor, RCAP GIS. Datum/Projection: NAD 1983 Ohio State Plane North (ft) Date: 2/23/2016*





□ Symbol representing single service line

Public  
Private

#### Material of Service Line

Lead  
Non-Lead  
No Information

Walnut Creek Water Service Area



0 0.125 0.25 0.5 Miles

Created for use by Walnut Creek Water Company  
By RCAP GIS Team  
February 19, 2017

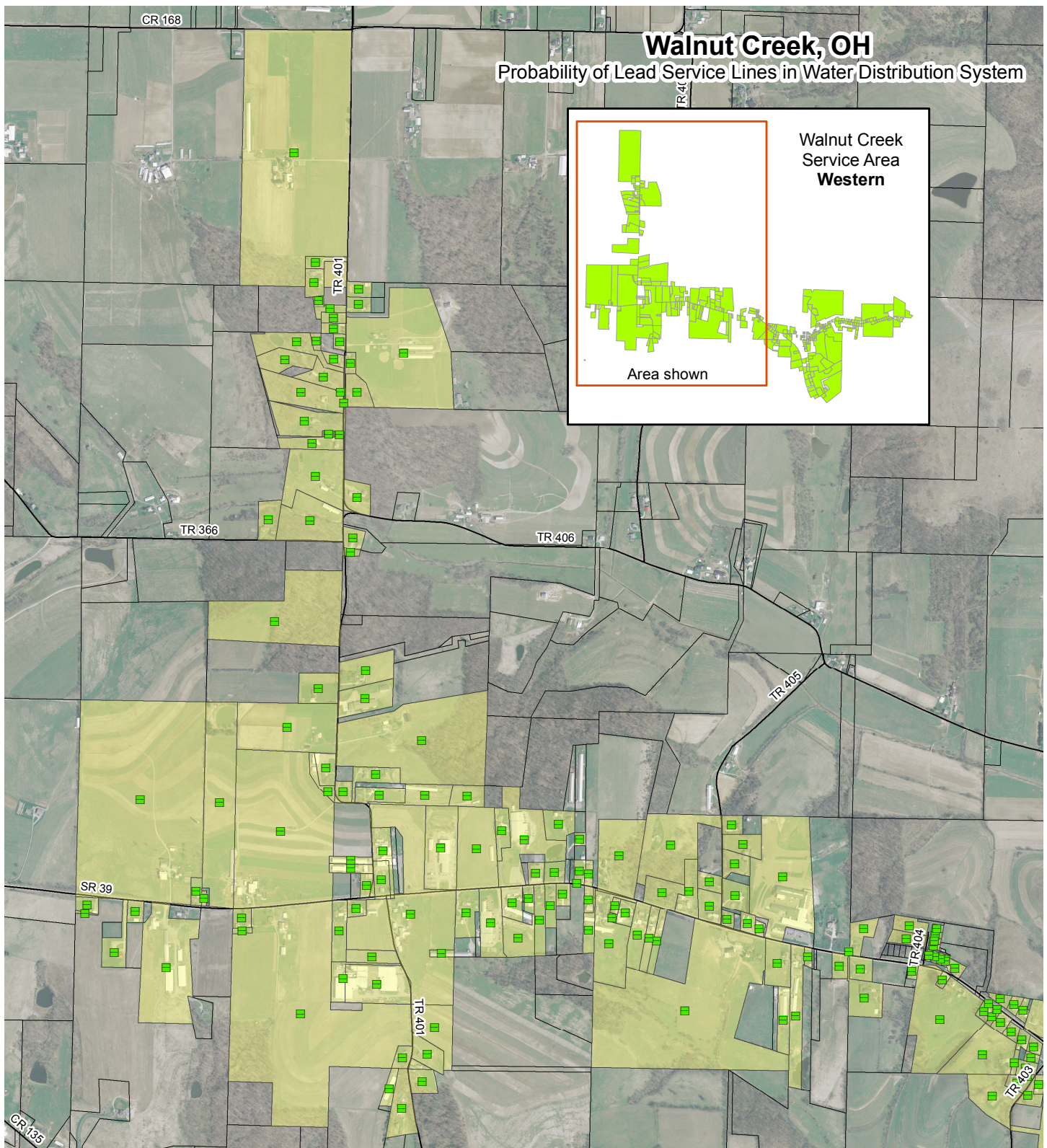


Buildings in Ohio built prior to 1998 or that use plumbing material or solder manufactured before 1998 may have materials with greater than 8% lead and are at a higher risk of contributing lead to the drinking water than materials manufactured after 1998.

In addition, buildings built and plumbing materials manufactured after 2014 were required to have less than 0.25% lead by weight and have the lowest risk for contributing lead to the drinking water. It should be noted however that, although prohibited, some use of leaded solder or leaded components may have occurred after the prohibitions became effective.

Coordinate System: NAD 1983 StatePlane Ohio North FIPS 3401 Feet  
Data Sources: Walnut Creek Water, Holmes County Auditor, RCAP GIS Team, ESRI, OGRIP, OSIP, TIGER Lines





□ Symbol representing single service line

Public  
Private

Ownership of Line

#### Material of Service Line

Yellow Lead  
Green Non-Lead  
Grey No Information

Yellow Walnut Creek Water Service Area



0 0.125 0.25 0.5 Miles

Created for use by Walnut Creek Water Company  
By RCAP GIS Team  
February 19, 2017



Buildings in Ohio built prior to 1998 or that use plumbing material or solder manufactured before 1998 may have materials with greater than 8% lead and are at a higher risk of contributing lead to the drinking water than materials manufactured after 1998.

In addition, buildings built and plumbing materials manufactured after 2014 were required to have less than 0.25% lead by weight and have the lowest risk for contributing lead to the drinking water. It should be noted however that, although prohibited, some use of leaded solder or leaded components may have occurred after the prohibitions became effective.



**VERIFICATION FORM FOR COMMUNITY PUBLIC WATER SYSTEMS  
CLAIMING NO LEAD SERVICE LINES**

The owner or operator of all community public water systems must identify and map areas of their distribution system that are known or are likely to contain lead service lines. Systems must submit a copy of the applicable map to the Ohio Department of Health and the Ohio Department of Job and Family Services. Systems must also submit a report to the director containing at least both of the following: (1) The applicable map with narrative, and (2) A list of sampling locations used to collect samples as required by Ohio Revised Code (ORC) Section 6109.121 and any rules adopted thereunder, including contact information for the owner and occupant of each sampling site.

Should a water system determine no lead service lines exist in their distribution system, they must provide information stating they reviewed, at the minimum, historical permit records and local ordinances, distribution maintenance records and information pertaining to installation dates or materials for all service lines. This information must be verified below.

I HEREBY CERTIFY THAT THE FOLLOWING METHOD(S) WERE USED TO DETERMINE NO LEAD  
SERVICE LINES EXIST IN THIS WATER SYSTEM'S DISTRIBUTION SYSTEM, AS REQUIRED BY  
ORC 6109.121(F):

**LEAD SERVICE LINE VERIFICATION**

**This PWS states they have no lead service lines and has reviewed the following information (select one or more of the following):**

- ☒ Historical permit records and/or local ordinances
- ☒ Distribution maintenance records (i.e. meter replacement, waterline break repairs)
- ☒ Information pertaining to installation dates for all service lines (i.e. after 1986 when lead service lines were banned)
- ☐ Service line material of all service lines is known (i.e. all service lines are known to be PVC)

Stanley D. Hershberger 3-01-17

Signature of Responsible Person

Date

STANLEY D. HERSHBERGER Operator

Printed Name and Title of Responsible Person

PWS NAME: Walnut Creek Water Co

PWS ID: OH 3801512

COUNTY: Holmes

**For Ohio EPA use only:**

Date Verification Rec'd: \_\_\_\_\_

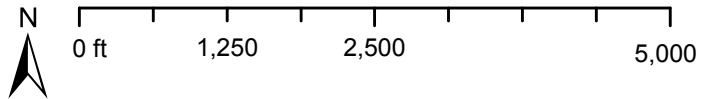
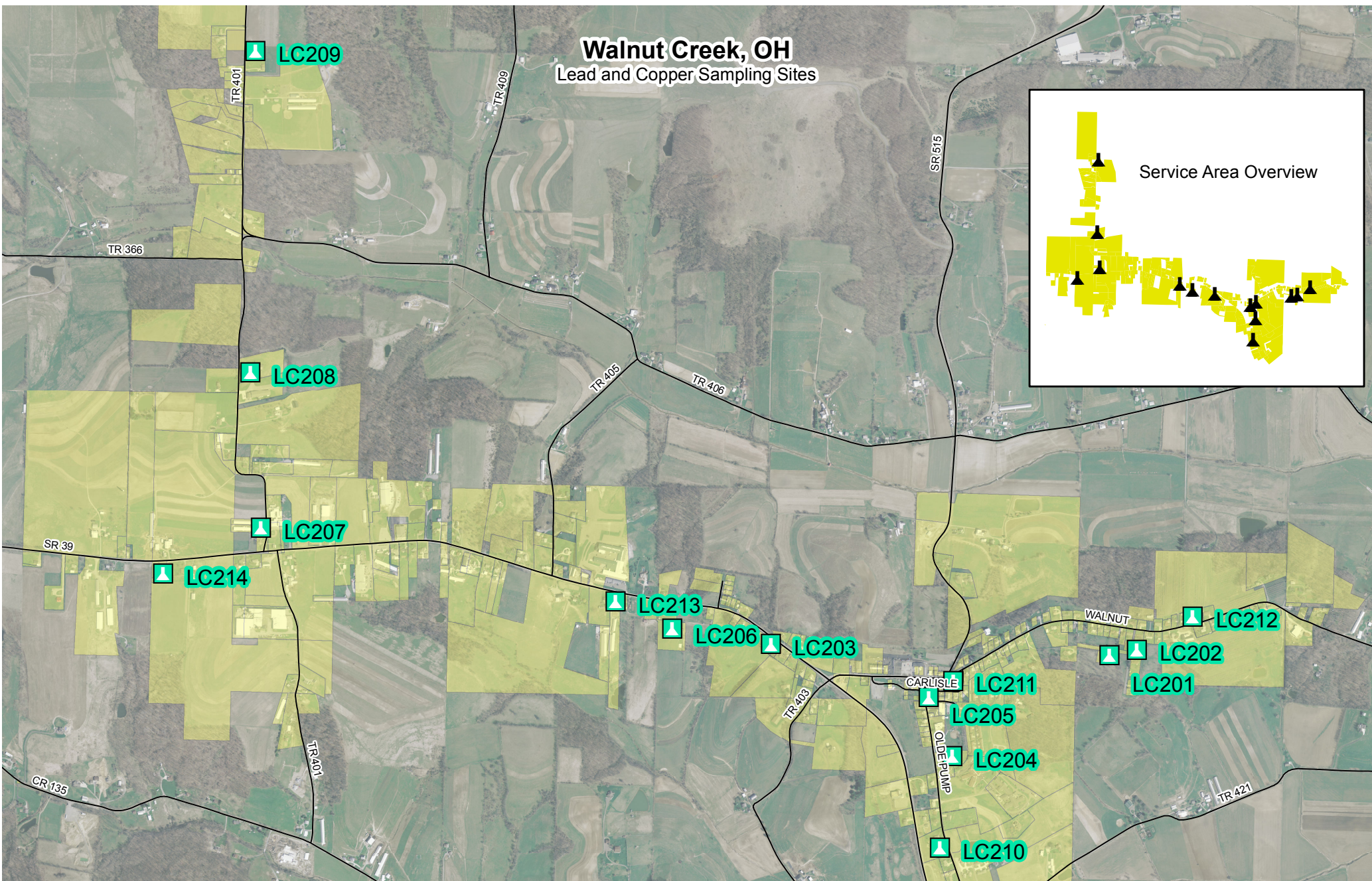
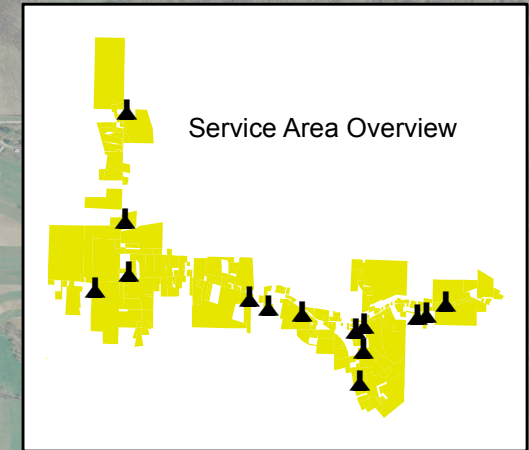






# Walnut Creek, OH

## Lead and Copper Sampling Sites



Lead & Copper Sampling Site



Mount Eaton PWS Service Area

Station ID	Address	Station ID	Address
LC201	South Dr 4947	LC208	TR 401 5284
LC202	South Dr 4950	LC209	TR 401 5700
LC203	SR 39 2982	LC210	Olde Pump St 4689
LC204	Olde Pump St 4792	LC211	Olde Pump St 4792
LC205	Olde Pump St 4876	LC212	TR 444 2447
LC206	SR 39 3114	LC213	SR 39 3172
LC207	TR 401 5055	LC214	SR 39 3768



Created for use by Walnut Creek Water Company  
By RCAP GIS Team  
February, 2017

Coordinate System: NAD 1983 StatePlane Ohio North FIPS 3401 Feet  
Data Sources: Walnut Creek Water, Holmes County Auditor, RCAP GIS Team, ESRI, OGRIP, OSIP, TIGER Lines