

Kinetico Incorporated PWS # 2851712

Subject: Lead Service Line and Fixture Mapping

System Narrative

Construction of the Kinetico Incorporated Manufacturing Facility at 10845 Kinsman Rd. Newbury, Ohio was begun in 1983, with occupancy taken in the spring of 1984. The facility consists of two buildings designated as Building #1 and Building #2 respectively. Construction was in accordance with all applicable laws, codes and standards in place at the time. This also pertains to standard plumbing practices and materials. Interior plumbing was soldered copper piping.

During the years of 1995 – 1996, the facility underwent a major expansion at the north and south portions of building #1. Included in this expansion was the establishment of a Central Water Treatment facility which incorporates state of the art water treatment equipment. The unit processes, equipment, distribution system (materials and scheme), and appurtenances were constructed and approved by OEPA and in compliance with all applicable codes and ordinances. At this time, much of the Interior piping was transitioned to PVC or other non-metallic piping. This facility is designated as a Non-Transient Non-Community Public Water Supply PWS ID # 2851712 by OEPA. Below is a brief description of the Water System as is contained in the Kinetico Incorporated Backflow Prevention and Cross-Connection Control Program.

“The Kinetico Incorporated Potable Water System consists of a dedicated Groundwater Source, a dedicated Treatment Train, and a dedicated Distribution System. A portion of the Treatment Train and the Distribution system is further split into two separate conveyances, one for Drinking Water (Potable Drinking - Consumption) and one for Non-Drinking (Potable Soft - Hygiene). The Drinking water is plumbed only to dedicated Drinking Water Taps and Water Fountains. The Non-Drinking water is plumbed to Dishwashing Sinks and Machines, Lavatory Sinks, and Showers. The Source, Treatment, and Distribution including all fixtures are under the complete control of Kinetico Incorporated.”

In 1997, Kinetico Incorporated purchased the property and building located at 10975 Kinsman Rd. Newbury, Ohio, designated as Building #3. Kinetico also constructed an additional building at 11015 Kinsman Rd. Newbury, Ohio, designated as Building #4. Both properties were subsequently “tied” into the Central Water Treatment system. Interior main service runs were replaced with PVC or other non-metallic piping, and where possible connections to fixtures were also replaced. Below is a description of the distribution system as it currently exists. See Site Plan drawing # SK-3052 (on file with OEPA) for general overview, truncated version attached, and Floor Plan drawings of each individual building for detail (also attached).

Source (see Site Plan) – Well #0000255 via ASTM D2239 NSF PW Polyethylene to Vault. Vault to Central Water Treatment via ASTM 1785 NSF PW Sch. 80 & 40 PVC.

Central Water Treatment to Bldg. #1 – Interior plumbing – Main lines – Mixture of ASTM D2846 NSF PW CPVC, ASTM 1785 NSF PW Schedule 80 & 40 PVC, ASTM 1-3309 NSF PW Polybutylene & Paraflex E5 NSF-61 Polyethylene to fixtures. (see Bldg. #1 Map & Legend Bldg. #1 for fixture ID).

Central Water Treatment to Bldg. #2 via Vault piping and ASTM D2239 NSF PW Polyethylene to Interior plumbing – Main lines – Mixture of ASTM 1-3309 NSF PW Polybutylene, ASTM 1785 NSF PW Schedule 40 PVC, & Paraflex E5 NSF-61 Polyethylene to fixtures. (see Bldg. #2 Map & Legend Bldg. #2 for fixture ID).

Central Water Treatment to Bldg. #3 via Vault piping and ASTM D2239 NSF PW Polyethylene to Interior plumbing – Main lines – ASTM 1785 NSF PW Schedule 80 PVC to ASTM 1785 NSF PW Schedule 40 PVC to Paraflex E5 NSF-61 Polyethylene to fixtures (see Bldg. #3 Map & Legend Bldg. #3 for fixture ID).

Central Water Treatment to Bldg. #4 via Vault piping and ASTM D2239 NSF PW Polyethylene to Interior plumbing – Main lines – ASTM 1785 NSF PW Schedule 40 PVC to fixtures (see Bldg. #4 Map & Legend Bldg. #4 for fixture ID).

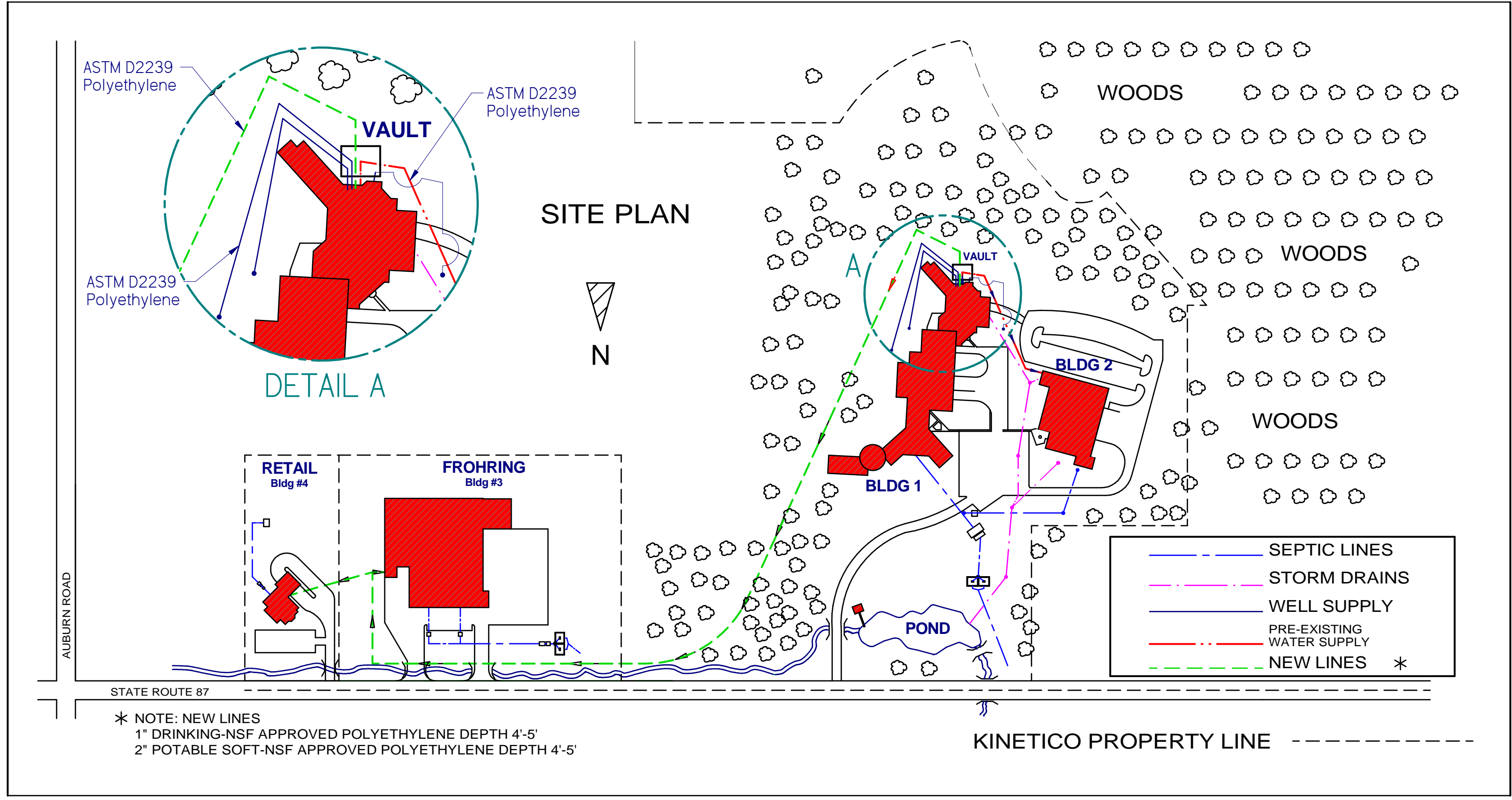
End Notes:

With the exception of (1) approx. 11' copper wall drop – Bldg. #1 – DFTB1-5, Kinetico Incorporated can be considered as 'Lead Free'. Kinetico incorporated has monitored and been in compliance with the Lead and Copper Rule since its inception (results on file with OEPA). Kinetico Incorporated is committed to compliance with all applicable Laws and Regulations so as to protect the Public Health of all of our Employees. The information provided in this Narrative is based upon all available records and documentation and by a physical inspection of the distribution system. Should further information or clarification be required please contact us.

Kinetico Incorporated
10845 Kinsman Rd.
Newbury, OH 44065

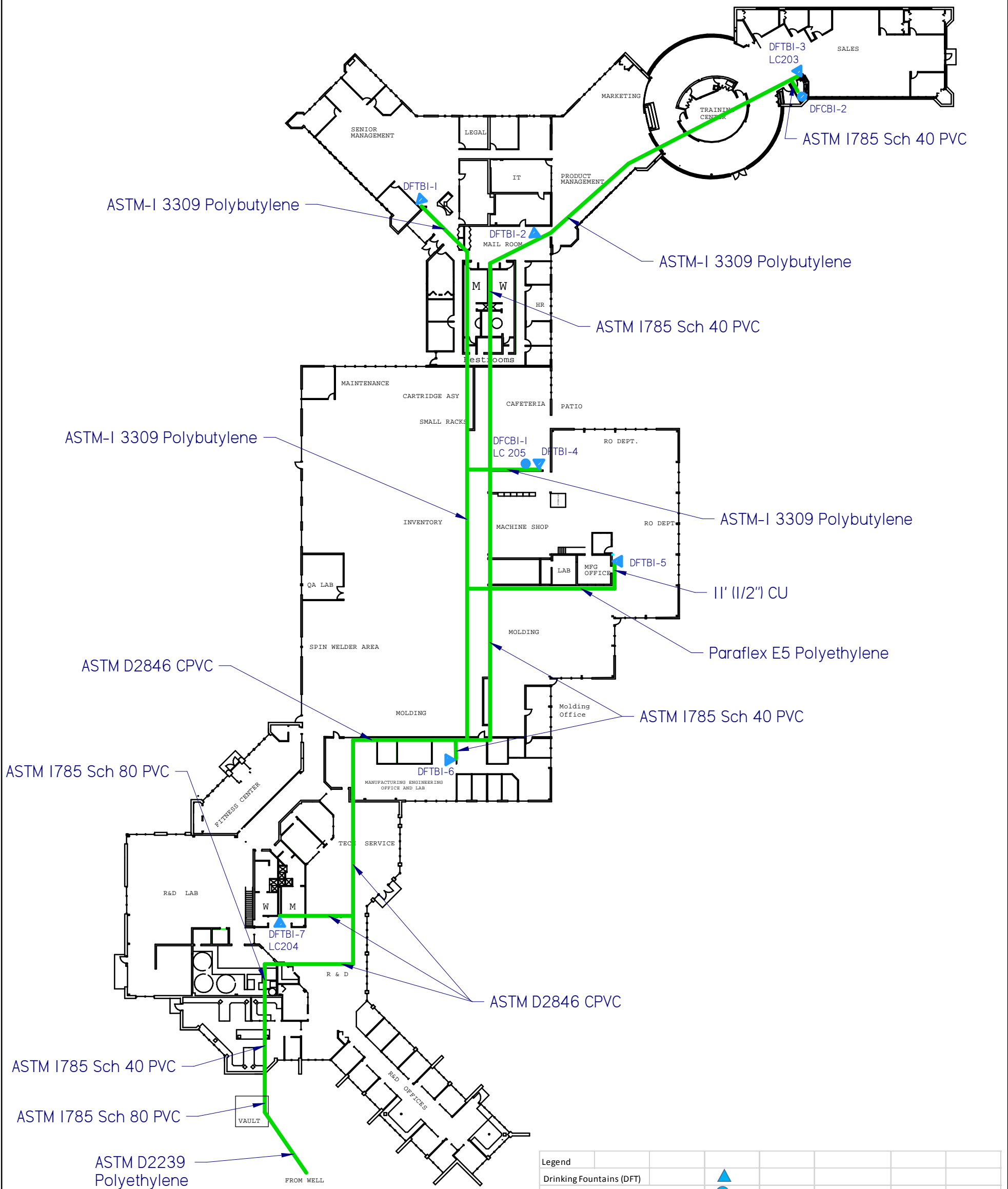
THIS DRAWING AND ITS CONTENTS ARE THE PROPERTY OF KINETICO INCORPORATED. THEY HAVE BEEN LOANED TO YOU FOR A LIMITED TIME AND PURPOSE, AND MAY NOT BE COPIED OR DUPLICATED WITHOUT THE WRITTEN PERMISSION OF AN AUTHORIZED EMPLOYEE OF KINETICO INCORPORATED. ADDITIONALLY, THE PROCESS, METHOD, DESIGN AND DATA CONTAINED HEREIN, ARE CONSIDERED TO BE THE PROPERTY OF KINETICO INCORPORATED AND MAY NOT BE DIVULGED TO ANY OTHER PERSON OR COMPANY NOR USED TO KINETICO'S DISADVANTAGE

REV	DESCRIPTION	ECO	DATE	BY	APPRVD
A	New Part		2/28/2017		



TOLERANCE UNLESS OTHERWISE SPECIFIED			
FRACTIONS ± 1/16 X ± .030 XX ± .010 XXX ± .005 ANGLES ± 1/2"	DWG NAME Kineticco Site Plan	DATE 2/28/2017	ORIGINALLY DRAWN BY sstefancin
MATERIAL		SIZE C	SCALE -
MANAGER		DATE 2/28/2017	SHEET 1 OF 1
LAST MODIFIED BY sstefancin		DATE 2/28/2017	DWG REV A
		SK-3052	

Route 87



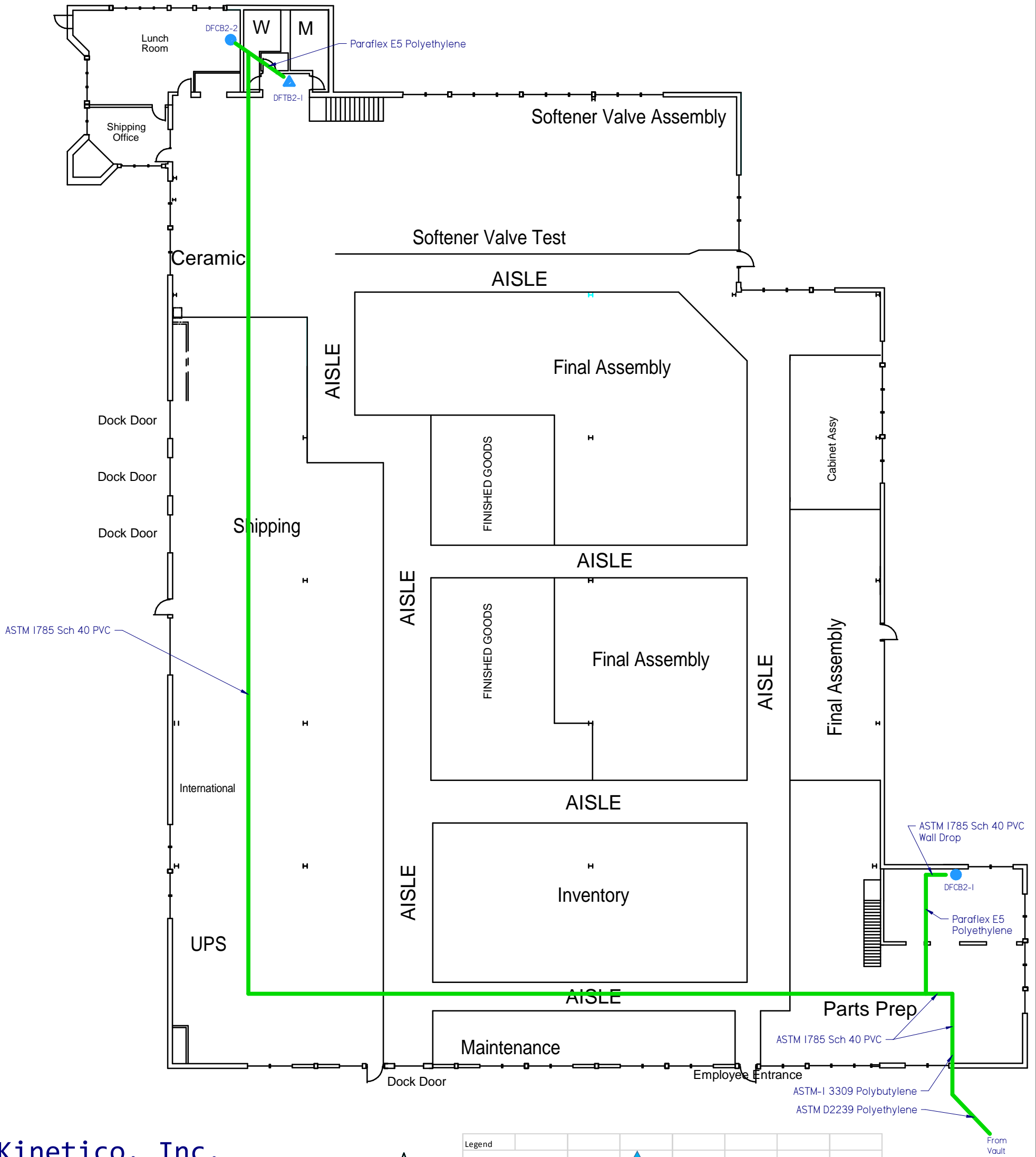
Kinetico, Inc.
Building 1
10845 Kinsman Rd.
Newbury, Oh 44065



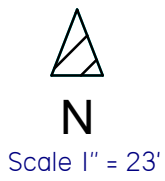
Scale 1" = 49'

Legend							
Drinking Fountains (DFT)							
Drinking Water Faucets (DFC)							
K. Code	Bldg.	Location	Mfg.	Model	Serial #	SMP ID	Pb Free
DFTB1-1	1	Accounting	Elkay	ESWA-8-1	830951113		Yes
DFTB1-2	1	Mail Room	Elkay	ESWA-8-1	830951110		Yes
DFTB1-3	1	Sales	Elkay	ERP2-8C	960410750 DF-3	LC203	Yes
DFTB1-4	1	Kitchen	Elkay	ESWA-8-1	831065171		Yes
DFTB1-5	1	Molding	Oasis	P8AC-H300	1424001759		Yes
DFTB1-6	1	Tech. Svc.	Elkay	ESWA-8-1	830951117		Yes
DFTB1-7	1	R&D	Elkay	ERP2-8C	Unk.	LC204	Yes
DFCB1-1	1	Kitchen	Chicago	629	Unk.	LC205	Yes
DFCB1-2	1	Sales	Chicago	629	Unk.		Yes

Route 87



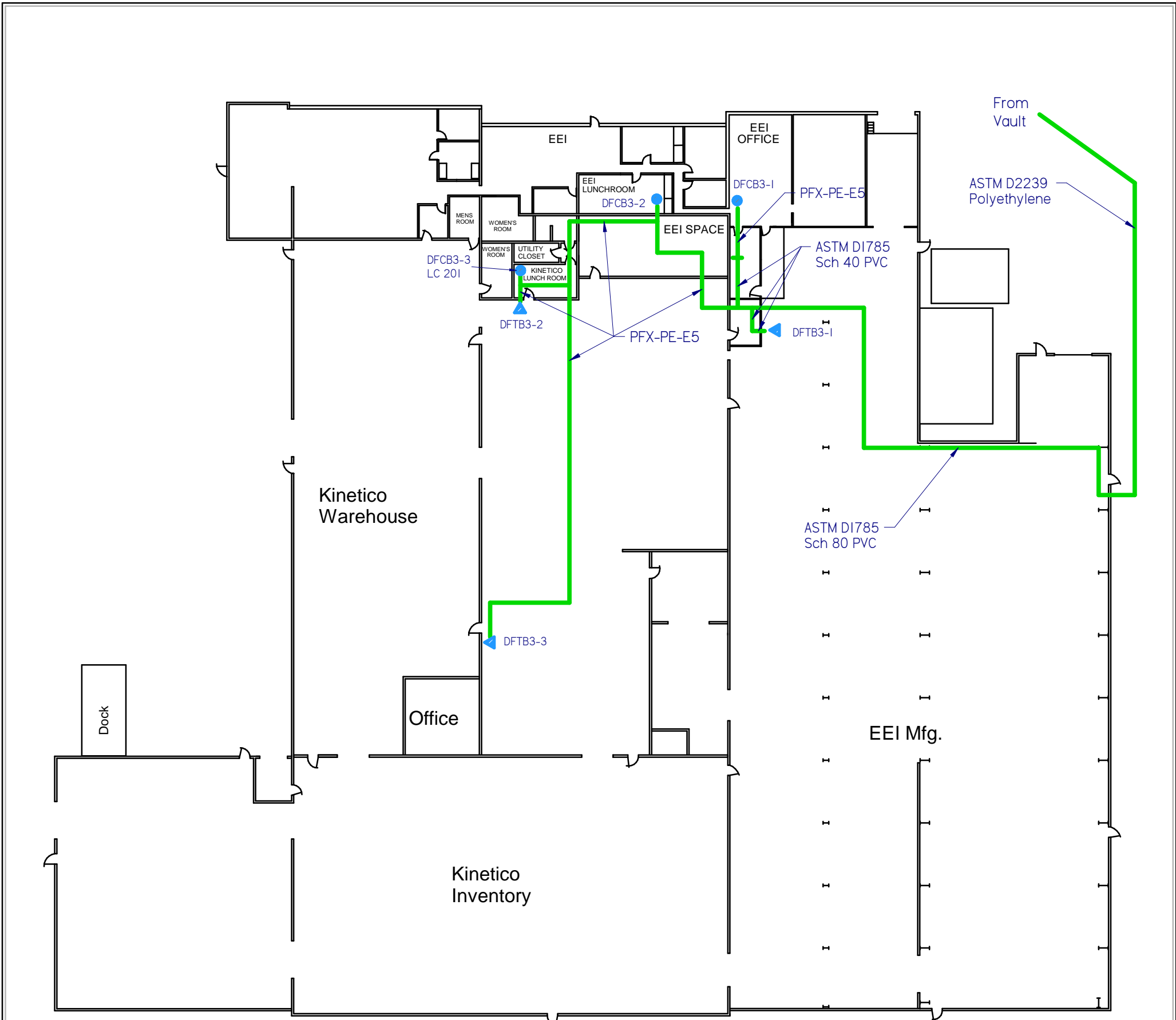
Kineticco, Inc.
 Building 2
 10845 Kinsman Rd.
 Newbury, Oh 44065



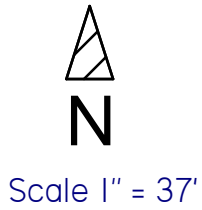
Legend								
Drinking Fountains (DFT)								
Drinking Water Faucets (DFC)								Pb
K. Code	Bldg.	Location	Mfg.	Model	Serial #	SMP ID	Free	
DFTB2-1	2	SVA	Halsey Taylor	HBW13A60	960841675	LC202	Yes	
DFCB2-1	2	Parts Prep.	Insinkerator	HC-Wave*	Unk.		Yes	
DFCB2-2	2	SVA	Tomlinson	K#13291*	N/A		Yes	

* Certified to NSF/ANSI 372 ≤ 0.25% Lead

Route 87



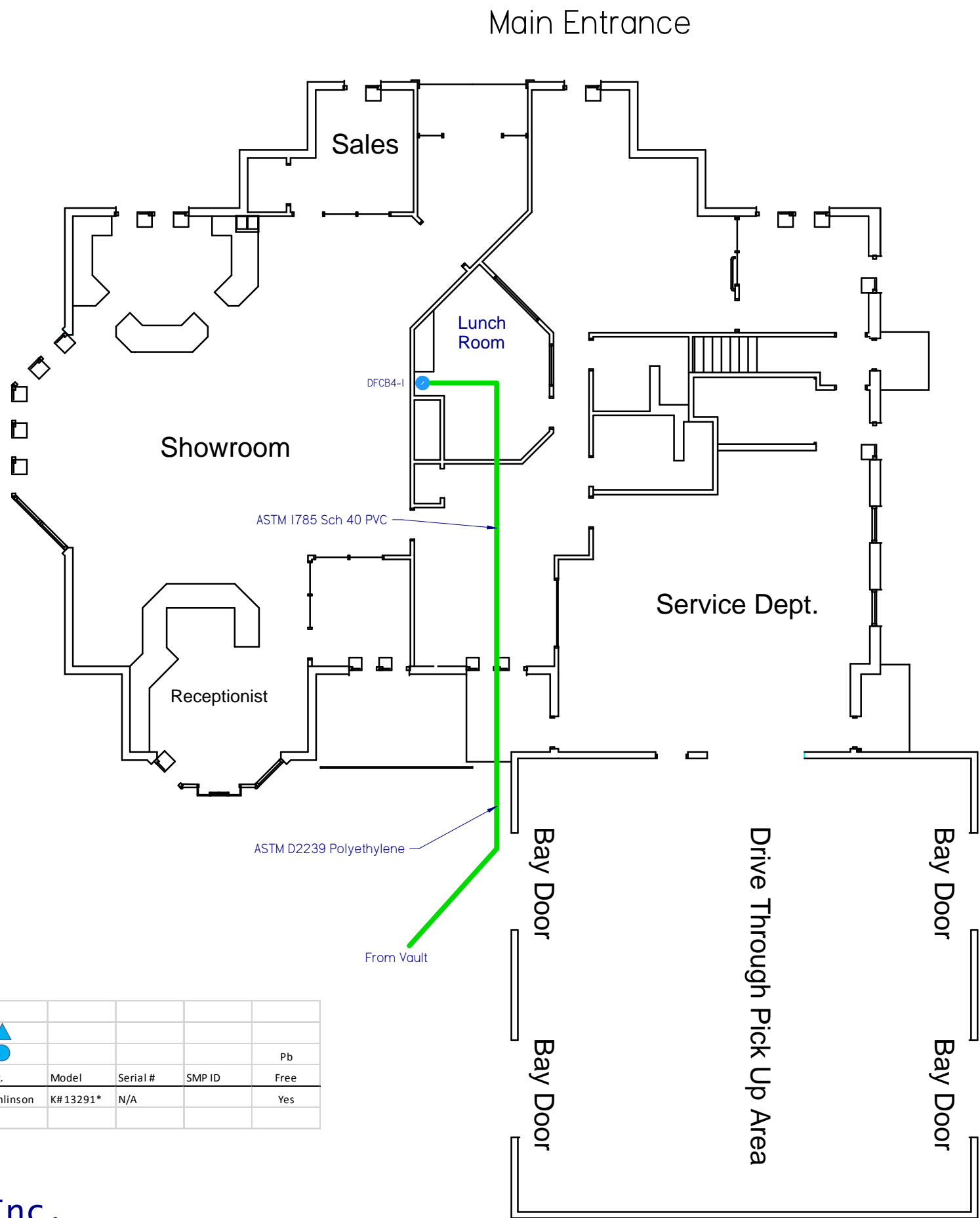
Kinetico, Inc.
Building 3
10975 Kinsman Rd.
Newbury, Oh 44065



Legend							
Drinking Fountains (DFT)				▲			
Drinking Water Faucets (DFC)				●			
K. Code	Bldg.	Location	Mfg.	Model	Serial #	SMP ID	Pb Free
DFTB3-1	3	EEI Mfg.	Halsey Taylor	LF-WM8A3	20045530		Yes
DFTB3-2	3	KCo. Cartridge	Oasis	P8AC-H301	1515001369		Yes
DFTB3-3	3	Kco. KUBE	Elkay/Halsey Taylor	HEW 3	40524140		Yes
DFCB3-1	3	EEI Office	Coway	CHP-04A1	Unk.		Yes
DFCB3-2	3	EEI Lunch Room	Tomlinson	K#13291*	N/A		Yes
DFCB3-3	3	Kco. Lunch Room	Insinkerator	SST	38038733597	LC201	Yes

* Certified to NSF/ANSI 372 ≤ 0.25% Lead

Route 87



N

Scale 1" = 13'-4"

Legend							
Drinking Fountains (DFT)							
Drinking Water Faucets (DFC)							
K. Code	Bldg.	Location	Mfg.	Model	Serial #	SMP ID	Pb Free
DFCB4-1	4	Lunch Room	Tomlinson	K#13291*	N/A		Yes
* Certified to NSF/ANSI 372 ≤0.25% Lead							

Kinetico, Inc.
Building 4
11015 Kinsman Rd.
Newbury, Oh 44065