



Village of Lodi

Public Water System Lead (Pb) Components

PWSID# OH52400412
Prepared February 2017

To comply with Section 6109.121 of the Ohio Revised Code, enacted in September 2016, the Village of Lodi in Medina County, Ohio has created the following report and attached map to identify known and potential components of water service lines that contain lead (Pb).

The following information and attached map do not verify the presence of lead in any of the plumbing components or structures shown. The information and map only show the probable or possible locations based on the pipe material that was typically used in the year that structures were built, or by the year that the plumbing component was installed.

RCAP staff and the Village of Lodi Water Department met on February 3rd, 2017 to review a map of the service area. No applicable historical maintenance and operation records, tap cards, or as-builts were available to identify lead component locations. Locations where lead service components have been replaced, and locations where lead components may still being used, were identified by the Village Lodi Water Department and recorded in a GIS database.

Public and Private Ownership of Service Lines

The Village of Lodi Water Department distributes water to 1763 customers. The Village owns and maintains service lines from the water distribution mains up to the curb stops. The remainder of each service line from the curb stop to the building is the responsibility of the property owner. Several mobile home parks in Lodi are served. Lodi does not own or maintain any part of the mains or service lines within the parks.

The tables below provide information about the possibility of lead lines serving the customers of Lodi Water. The year the structure was built or the year the plumbing material was installed determines which category it falls into.

Public Service Line Lead Probability		
Value	Public Lines #	% of System
Non-Lead	276	27.03%
≤ 8% Lead Alloy	74	7.25%
Very High (1825-1920)	219	21.45%
Moderate (1921-1950)	109	10.68%
Mild (1951-1980)	273	26.74%
Very Low (1981-1997)	70	6.86%

Private Service Line Lead Probability		
Value	Private #	% of System
Non-Lead	166	16.26%
≤ 8% Lead Alloy	96	9.40%
Very High (1825-1920)	285	27.91%
Moderate (1921-1950)	118	11.56%
Mild (1951-1980)	284	27.82%
Very Low (1981-1997)	72	7.05%

Two lead service lines have been observed and removed by current water operators. The lines were located in the 600 block of Bank Street, and the 300 block of Medina Street. The GIS data showed that the chance of lead was very high in both of those areas.

This report errs on the side of caution since it can not be concluded that there is or is not lead in a service. The number of “very high” probability lead services shown above is likely to be lower as the operators have only seen 2 lead lines. During replacement projects in the older sections of town, galvanized lines were usually observed throughout.

Lodi Water uses polyphosphates to treat remaining soluble iron/manganese left after treatment, but does not have an orthophosphate treatment system specifically to sequester lead.

Distribution System

Within the distribution system, none of the water main pipes themselves are known to contain any lead, however, there are joints, valves, and fittings within the system that may contain lead.

The Village of Lodi has approximately 23.4 miles of water main lines. The table below shows which lines are likely to contain lead solder, valves, or fittings. The material and/or installation date of the pipe determines which category it falls into.

Probability of Leaded Components in Water Mains		
Lead in Water Main Materials	Feet of Pipe	% of System
Probable (install date pre-regulation and is not plastic)	57611.82	46.63%
Improbable (install date post-regulation or is plastic)	65947.31	53.37%

Water Meters and Indoor Plumbing

Water meters at each customer location may contain more than 8% lead. Meters installed after 1998 may contain up to 8% lead. Meters installed after 2014 will have less than 0.25% lead.

Buildings in Ohio built prior to 1998 or that use plumbing material or solder manufactured before 1998 may have materials with greater than 8% lead and are at a higher risk of contributing lead to the drinking water than materials manufactured after 1998.

Buildings built and plumbing materials manufactured after 2014 were required to have less than 0.25% lead by weight and have the lowest risk for contributing lead to the drinking water. It should be noted however that, although prohibited, some use of leaded solder or leaded components may have occurred after the prohibitions became effective.

According to county auditor records, 0 structures have been built since 2014. Therefore, nearly all buildings in Lodi may have some percentage of lead in the plumbing components except those that used all plastic materials.

Customer Self-Reporting

The information on this map regarding privately owned service lines is based on the limited information from the water system staff and Medina County building and parcel data. Property owners are encouraged to inspect their own service lines entering the building if these are in anyway exposed, and notify the Village of Lodi if they have determined whether or not a lead service line exists. Please contact the Water Billing Clerk by calling 330-948-2040 or sending an email to info@villageoflodi.com. A representative from the water department will contact you to confirm and update this information for the next map release.

Contacts and Resources

If you have questions about known and potential lead components within the Village of Lodi Public Water System, please contact:

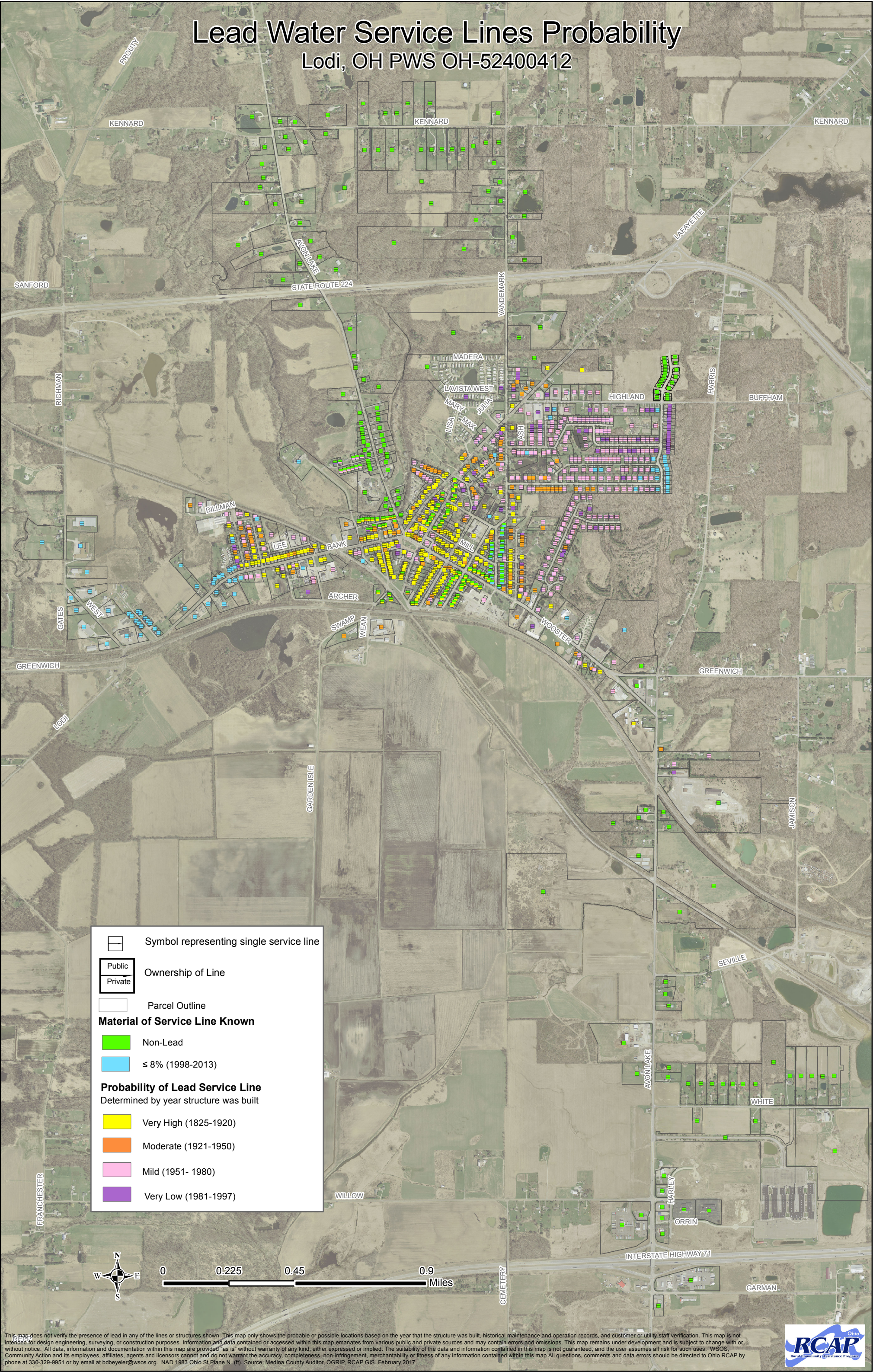
Lodi Board of Public Affairs
108 Ainsworth Street
P.O. Box 95
Lodi, Ohio 44254
Phone: 330-948-2040
E-mail: info@villageoflodi.com

For more information about lead service lines and their removal, we recommend the following resources:

- **The Lead Service Line Replacement Collaborative**
<http://www.lslr-collaborative.org/resources-for-concerned-consumers.html>
- **Ohio EPA 'Learn About Lead' page** <http://epa.ohio.gov/pic/lead.aspx>
- **US EPA Lead in Drinking Water Information Page**
<https://www.epa.gov/ground-water-and-drinking-water/basic-information-about-lead-drinking-water>

Lead Water Service Lines Probability

Lodi, OH PWS OH-52400412



This map does not verify the presence of lead in any of the lines or structures shown. This map only shows the probable or possible locations based on the year that the structure was built, historical maintenance and operation records, and customer or utility staff verification. This map is not intended for design engineering, surveying, or construction purposes. Information and data contained or accessed within this map emanates from various public and private sources and may contain errors and omissions. This map remains under development and is subject to change with or without notice. All data, information and documentation within this map are provided "as is" without warranty of any kind, either expressed or implied. The suitability of the data and information contained in this map is not guaranteed, and the user assumes all risk for such uses. WSOs, Community Action and its employees, affiliates, agents and licensors cannot and do not warrant the accuracy, completeness, non-infringement, merchantability or fitness of any information contained within this map. All questions, comments and data errors should be directed to Ohio RCAP by phone at 330-329-9951 or by email at bbeyeler@wsos.org. NAD 1983 Ohio St Plane N. (ft). Source: Medina County Auditor, OGRIP, RCAP GIS. February 2017

