

CURRIE ELEMENTARY

3306 Ridge Rd.

Cortland, OH 44410

phone #: 330-637-2976

RECEIVED

MAR 06 2017

OHIO EPA NEDO

PWS ID OH7836712

Facility ID # 7859178

Built 4/6/1966

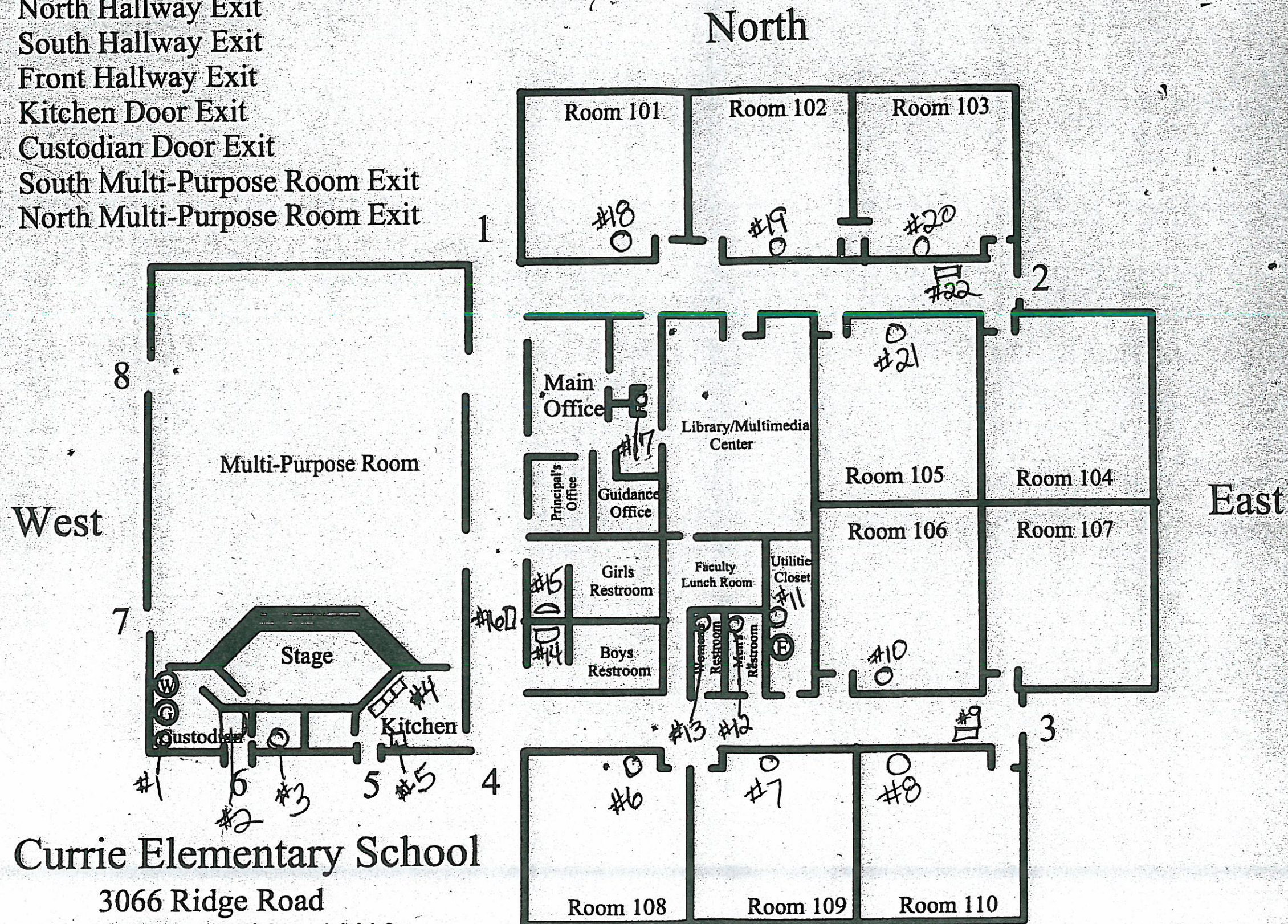
All service lines are copper pre 1986

- WATER ENTRY FROM WELL PVC TO CAST IRON THROUGH FLOOR
- 1 TO COPPER TO 3" GALVINIZED STORAGE TANK
  - 2 STORAGE TANK 2ND FLOOR GALVINIZED TO COPPER
  - 3 HOT WATER HEATER COPPER
  - 4 3 COMPARTMENT SINK COPPER KITCHEN
  - 5 SINGLE COMPARTMENT SINK COPPER KITCHEN
  - 6 SINK COPPER RM 108
  - 7 SINK COPPER RM 109
  - 8 SINK COPPER RM 110
  - 9 DRINKING FOUNTAIN COPPER HALLWAY OUTSIDE RM 110
  - 10 SINK COPPER RM 106
  - 11 SINK COPPER UTILITIES CLOSET
  - 12 SINK COPPER MENS REST ROOM
  - 13 SINK COPPER WOMENS REST ROOM
  - 14 SINK COPPER BOYS REST ROOM
  - 15 SINK COPPER GIRLS REST ROOM
  - 16 DRINKING FOUNTAIN COPPER HALL OUTSIDE REST ROOMS
  - 17 SINK COPPER CLINIC
  - 18 SINK COPPER RM 101
  - 19 SINK COPPER RM 102
  - 20 SINK COPPER RM 103
  - 21 SINK COPPER RM 105
  - 22 DRINKING FOUNTAIN COPPER HALLWAY OUTSIDE RM 103

Entity: Currie Elementary School  
Doc Type: Report  
Doc Subtype: \_\_\_\_\_  
Program: Drinking water  
County: Trembuck  
Secondary ID: OH7836712

# EXITS

1. Main Exit
2. North Hallway Exit
3. South Hallway Exit
4. Front Hallway Exit
5. Kitchen Door Exit
6. Custodian Door Exit
7. South Multi-Purpose Room Exit
8. North Multi-Purpose Room Exit



Currie Elementary School

3066 Ridge Road  
Cortland, Ohio 44410  
330-637-2976  
330-637-8017

Ⓜ - Water Shut Off: Custodian Room

RECEIVED

MAR 06 2017

OHIO EPA NEDO