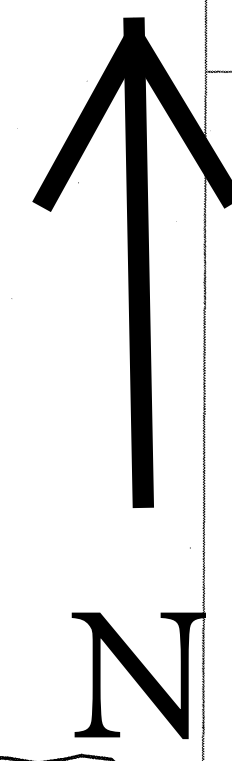


PWS NAME: CITY OF UNION
PWS ID: OH 570-2512



EAST OF STILLWATER RIVER

All water main and service lines were installed after 1998.

All service lines into structures are either K-copper or plastic.

Because it is practically impossible to determine the lead content of an installed fixture, fitting or pipe, it should be assumed that the manufacture or installation date is the primary indicator of the lead content. Therefore, the characteristics of buildings and piping solder or fixtures would be buildings in Ohio built prior to 1998 or that use plumbing material or solder manufactured before 1998 may have materials with greater than 8% lead and are at a higher risk of contributing lead to the drinking water than materials manufactured after 1998. In addition, buildings built and plumbing materials manufactured after 2014 were required to have less than .025% lead by weight and have the lowest risk for contributing lead to the drinking water. It should be noted however that, although prohibited, some use of leaded solder or leaded components may have occurred after the prohibitions became effective.

DAYTON INTERNATIONAL AIRPORT



WEST OF STILLWATER RIVER

BLUE: Union Incorporated in 1816

The first water mains and service lines were installed in the WPA days (mid 1930s). This is the only area at one time with lead service lines from Corp Stop to Curb Stop. All current water services are copper or except for a few that are galvanized pipe from the Curb Stop into the house structure. The last lead service was removed 18 years ago.

RED: Before 1986

All water service lines installed within this area are flared K-Copper. All plumbing inside existing residential structures is K copper, soldered with lead solder.

YELLOW: After 1986

All service lines are flared K-Copper. All plumbing inside was soldered with reduced lead solder.

PINK: After 1998

All service lines are flared K-Copper or plastic with plumbing inside with possible lead solder.

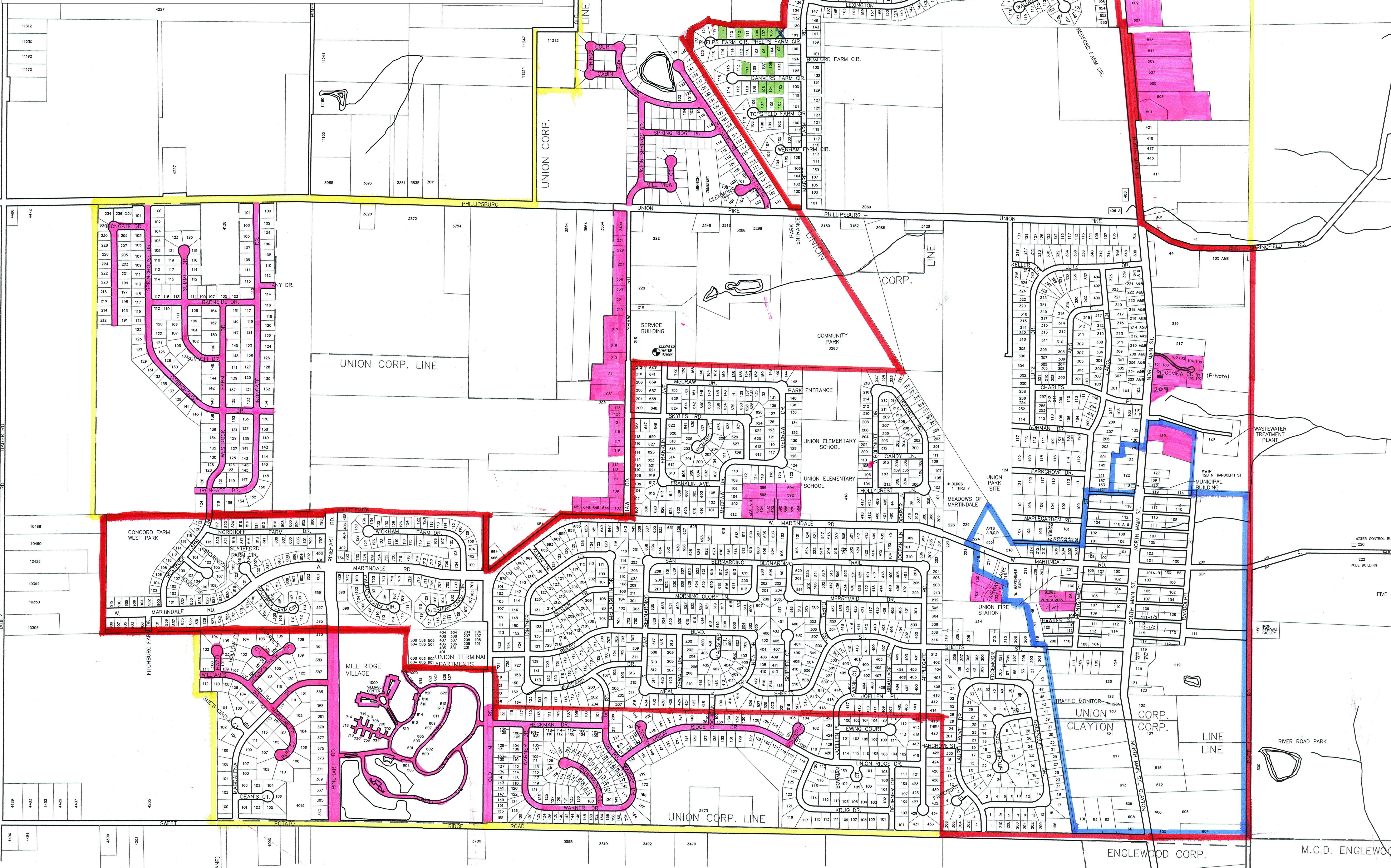
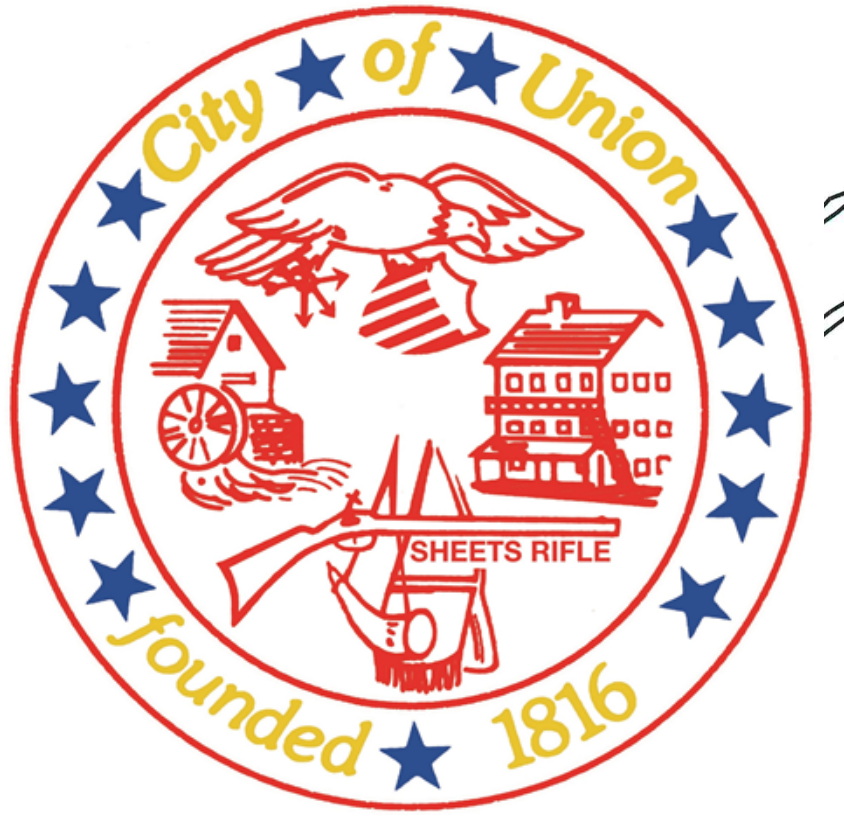
GREEN: Lead and Copper Sampling locations

These homes built between 1982 and 1984 are currently being sampled.

Because it is practically impossible to determine the lead content of an installed fixture, fitting or pipe, it should be assumed that the manufacture or installation date is the primary indicator of the lead content. Therefore, the characteristics of buildings and piping solder or fixtures would be buildings in Ohio built prior to 1998 or that use plumbing material or solder manufactured before 1998 may have materials with greater than 8% lead and are at a higher risk of contributing lead to the drinking water than materials manufactured after 1998. In addition, buildings built and plumbing materials manufactured after 2014 were required to have less than .025% lead by weight and have the lowest risk for contributing lead to the drinking water. It should be noted however that, although prohibited, some use of leaded solder or leaded components may have occurred after the prohibitions became effective.

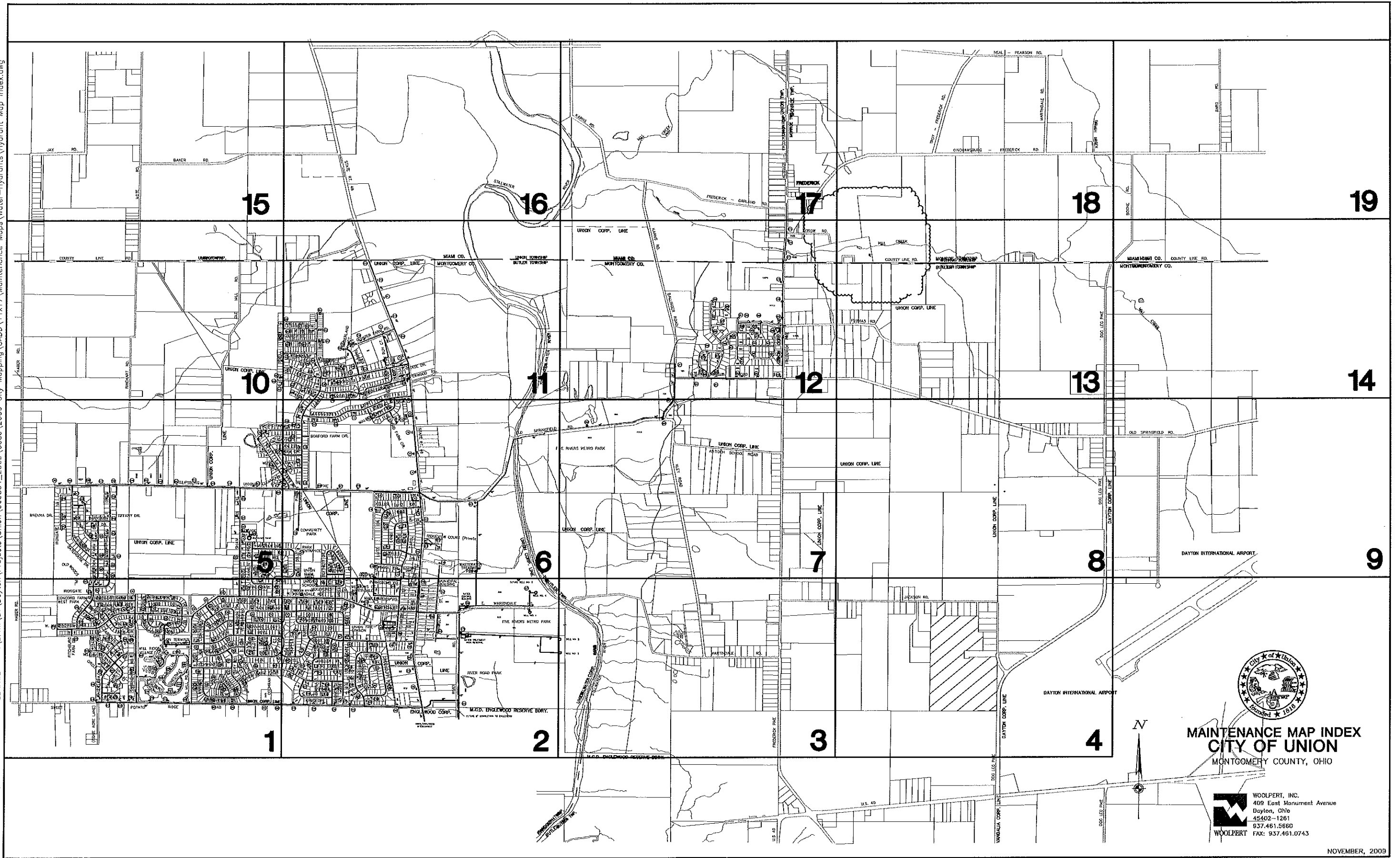
PWS NAME: CITY OF UNION

PWS ID: OH 570-2512



* MEADOWS OF MARTINDALE RD.
226 WEST MARTINDALE RD.
B200 #1 - 101-102-103-104
B200 #2 - 101-102-103-104
B200 #3 - 101-102-103-104
B200 #4 - 101-102-103-104
B200 #5 - 101-102-103-104
B200 #6 - 101-102-103-104
B200 #7 - 101-102-103-104
B200 #8 - 101-102-103-104
B200 #9 - 101-102-103-104
B200 #10 - 101-102-103-104

PRINTED Nov 19, 2009 - 9:08am FILENAME - W:\Srv\SV\Dayton\Projects\Union\069504_2009\Cadd\11x17\Maintenance Maps\Water-Hydrants\Hydrant Map Index.dwg





PWS NAME: CITY OF UNION
PWS ID: OH 570-2512

The City of Union was founded in 1816. The old part of town, highlighted in blue, is the only area that had lead service lines from Corp stop to Curb stop. The first water main, with lead joints and lead service lines to Curb stop were installed in the WPA days (mid-1930s). The city has replaced all water main with ductile cast or C-900 and service lines with copper or plastic from the Corp stop to Curb stop. Service lines from curb stop to structure are copper or plastic. A few still have galvanized lines. All service lines are the responsibility of the homeowner. The lead service lines were replaced with copper at City expense.

All main water lines within the City of Union distribution system are ductile cast cement lines, cast iron cement line or C-900. The majority of water service lines are flared K-copper or compression connection with a small amount of plastic service line. Water service lines are generally located in the middle of building lots. All interior water lines within residential, commercial or industrial structures are copper, plastic or pex. Our map indicates by color when subdivisions were installed.

This should fulfill your requirement and meet the March 9, 2017 deadline. Please feel free to contact our office should you have any questions.

Sincerely yours,


John P. Applegate
City Manager

VERIFICATION FORM FOR COMMUNITY PUBLIC WATER SYSTEMS CLAIMING NO LEAD SERVICE LINES

The owner or operator of all community public water systems must identify and map areas of their distribution system that are known or are likely to contain lead service lines. Systems must submit a copy of the applicable map to the Ohio Department of Health and the Ohio Department of Job and Family Services. Systems must also submit a report to the director containing at least both of the following: (1) The applicable map with narrative, and (2) A list of sampling locations used to collect samples as required by Ohio Revised Code (ORC) Section 6109.121 and any rules adopted thereunder, including contact information for the owner and occupant of each sampling site.

Should a water system determine no lead service lines exist in their distribution system, they must provide information stating they reviewed, at the minimum, historical permit records and local ordinances, distribution maintenance records and information pertaining to installation dates or materials for all services lines. This information must be verified below.

I HEREBY CERTIFY THAT THE FOLLOWING METHOD(S) WERE USED TO DETERMINE NO LEAD SERVICE LINES EXIST IN THIS WATER SYSTEM'S DISTRIBUTION SYSTEM, AS REQUIRED BY ORC 6109.121(F):

LEAD SERVICE LINE VERIFICATION

This PWS states they have no lead service lines and has reviewed the following information (select one or more of the following):

- ☒ Historical permit records and/or local ordinances
- ☒ Distribution maintenance records (i.e. meter replacement, waterline break repairs)
- ☒ Information pertaining to installation dates for all service lines (i.e. after 1986 when lead services lines were banned)
- ☒ Service line material of all service lines is known (i.e. all service lines are known to be PVC)



Signature of Responsible Person

3/6/2017
Date

John P. Applegate, City Manager

Printed Name and Title of Responsible Person

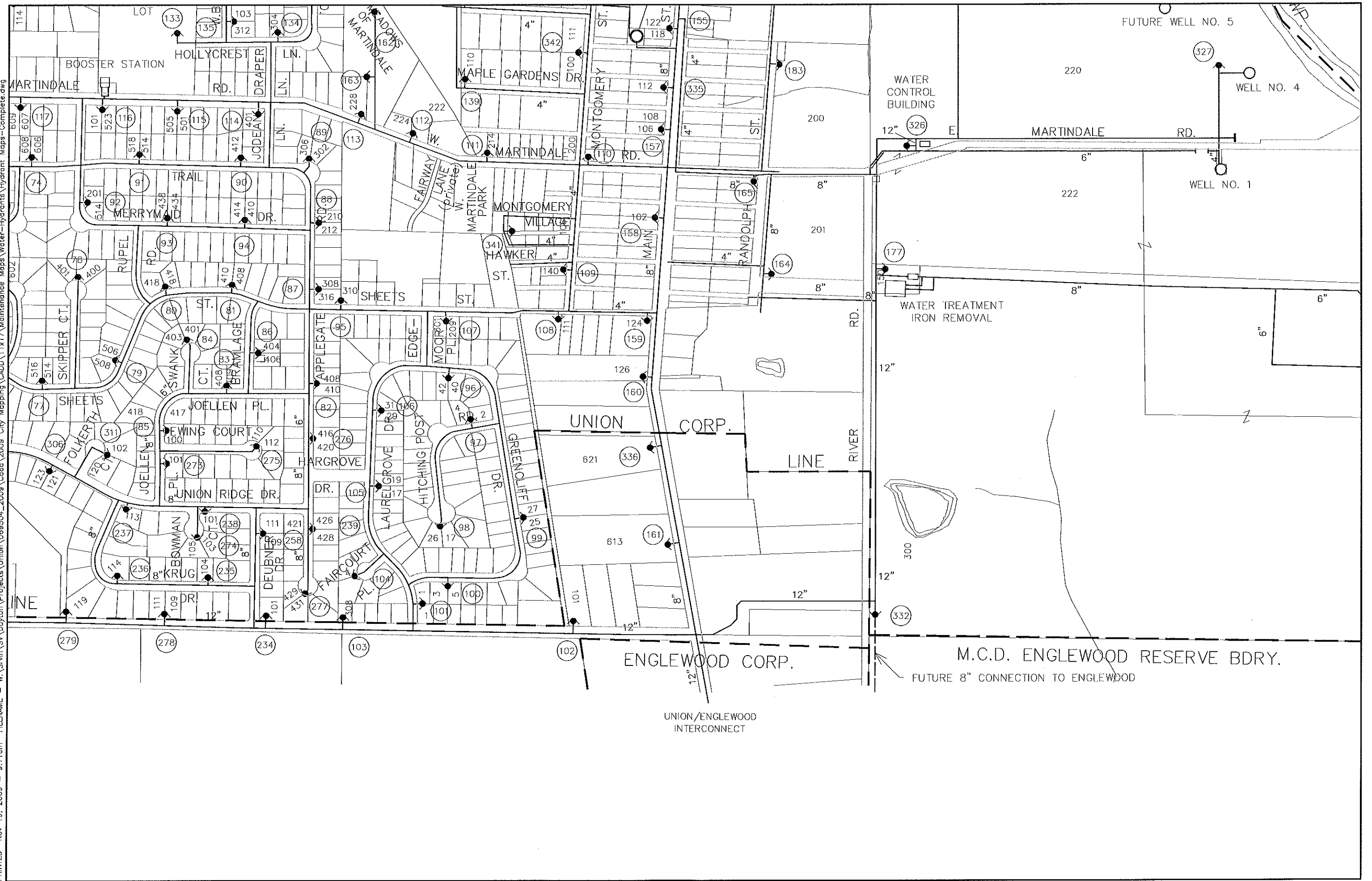
PWS NAME: City of Union
PWS ID: OH 570-2512
COUNTY: Montgomery

For Ohio EPA use only:

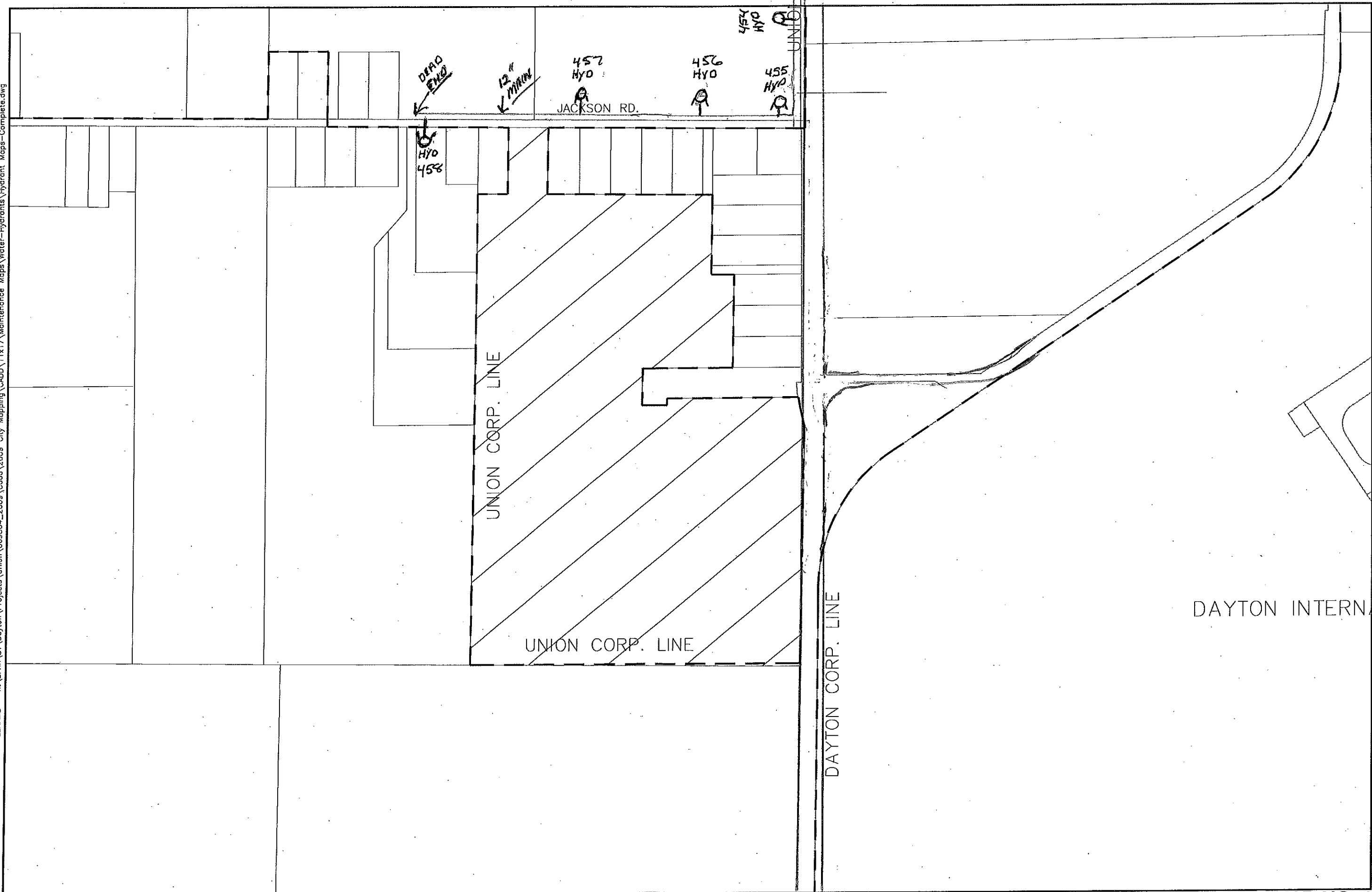
Date Verification Rec'd: _____

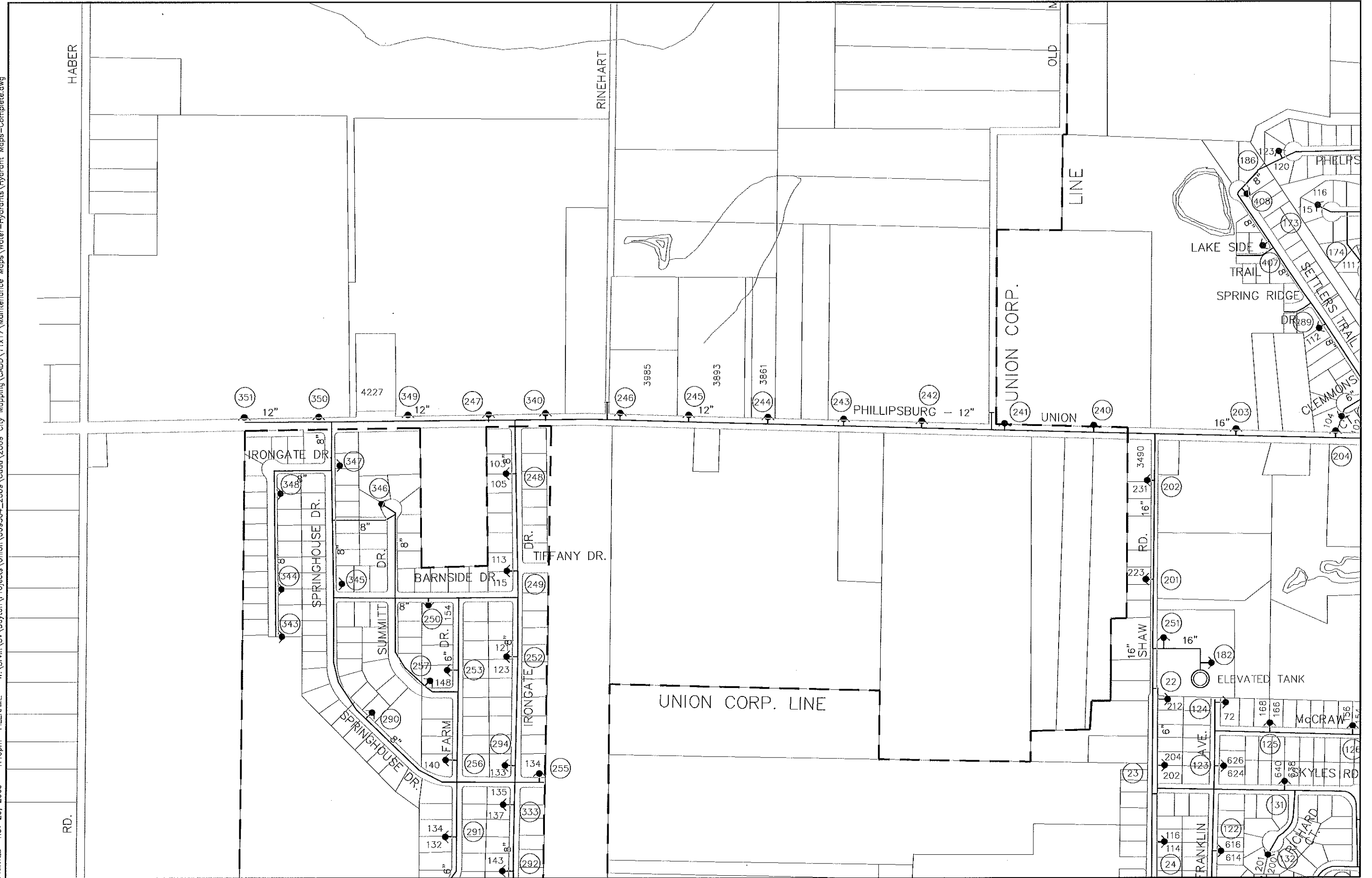


PRINTED Nov 19, 2009 - 9:11am FILENAME - W:\Srv\SV\Dayton\Projects\Union\069504_2009\Cadd\11x17\Maintenance Maps\Water-Hydrants\Hydrant Maps-Complete.dwg

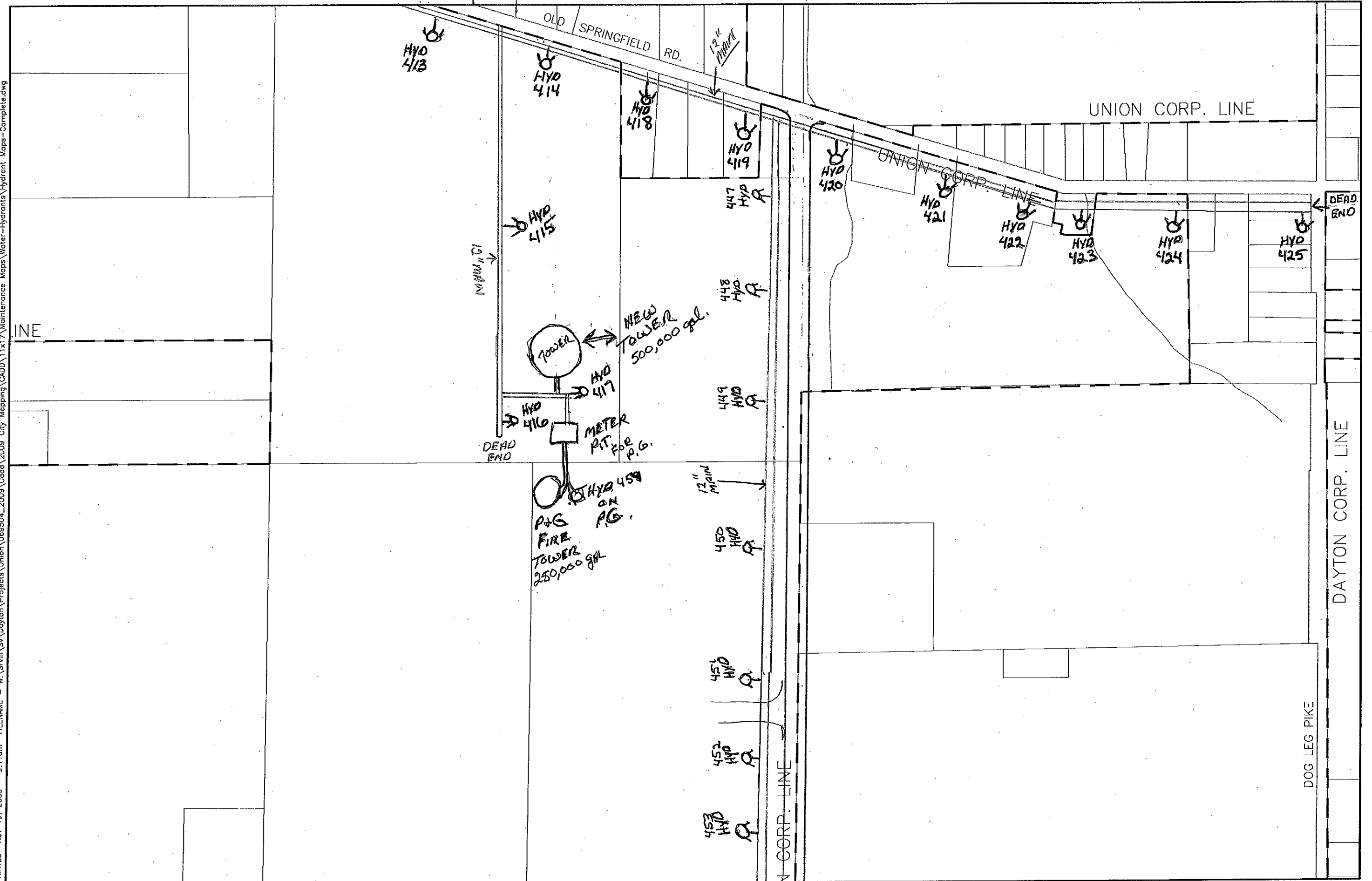




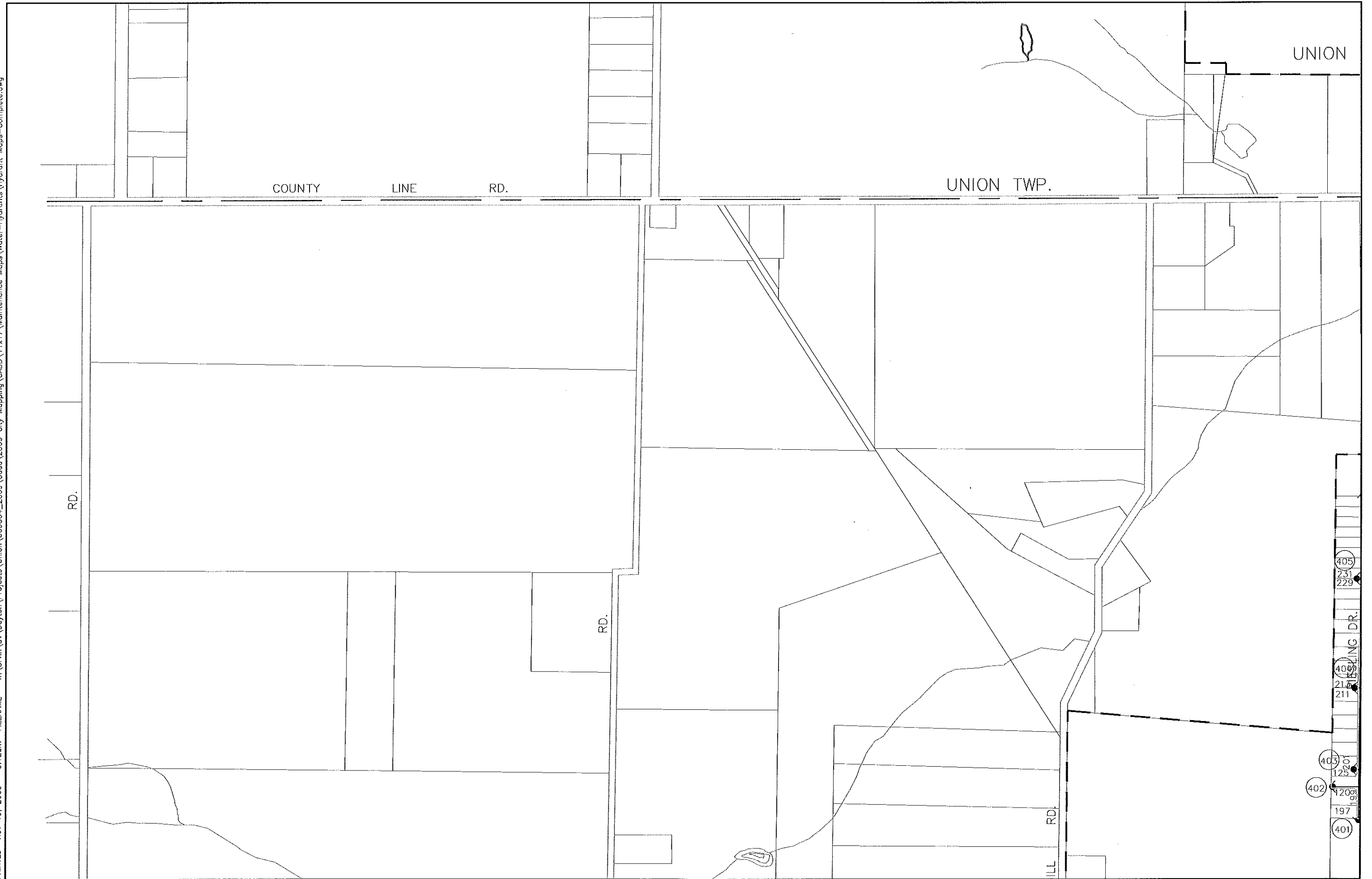




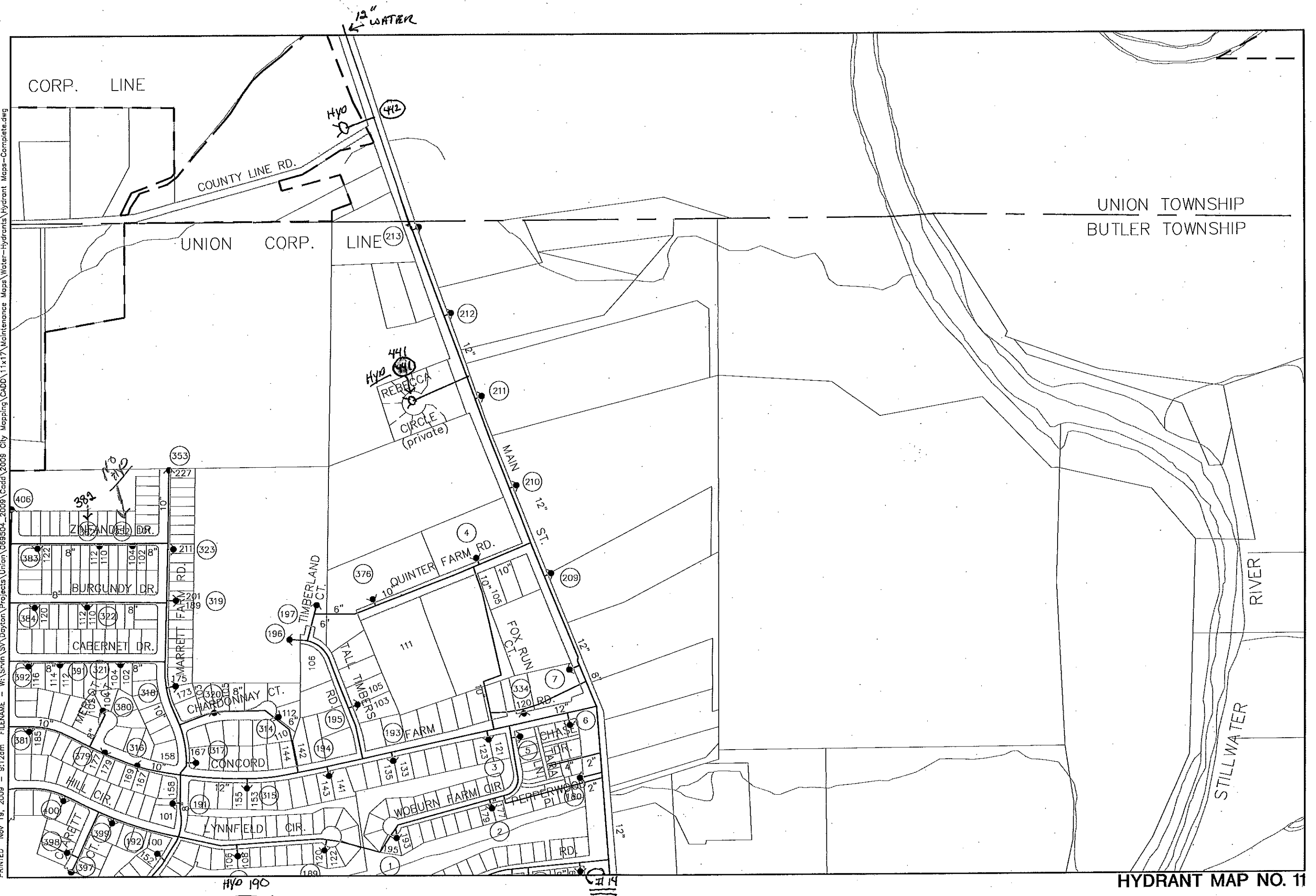


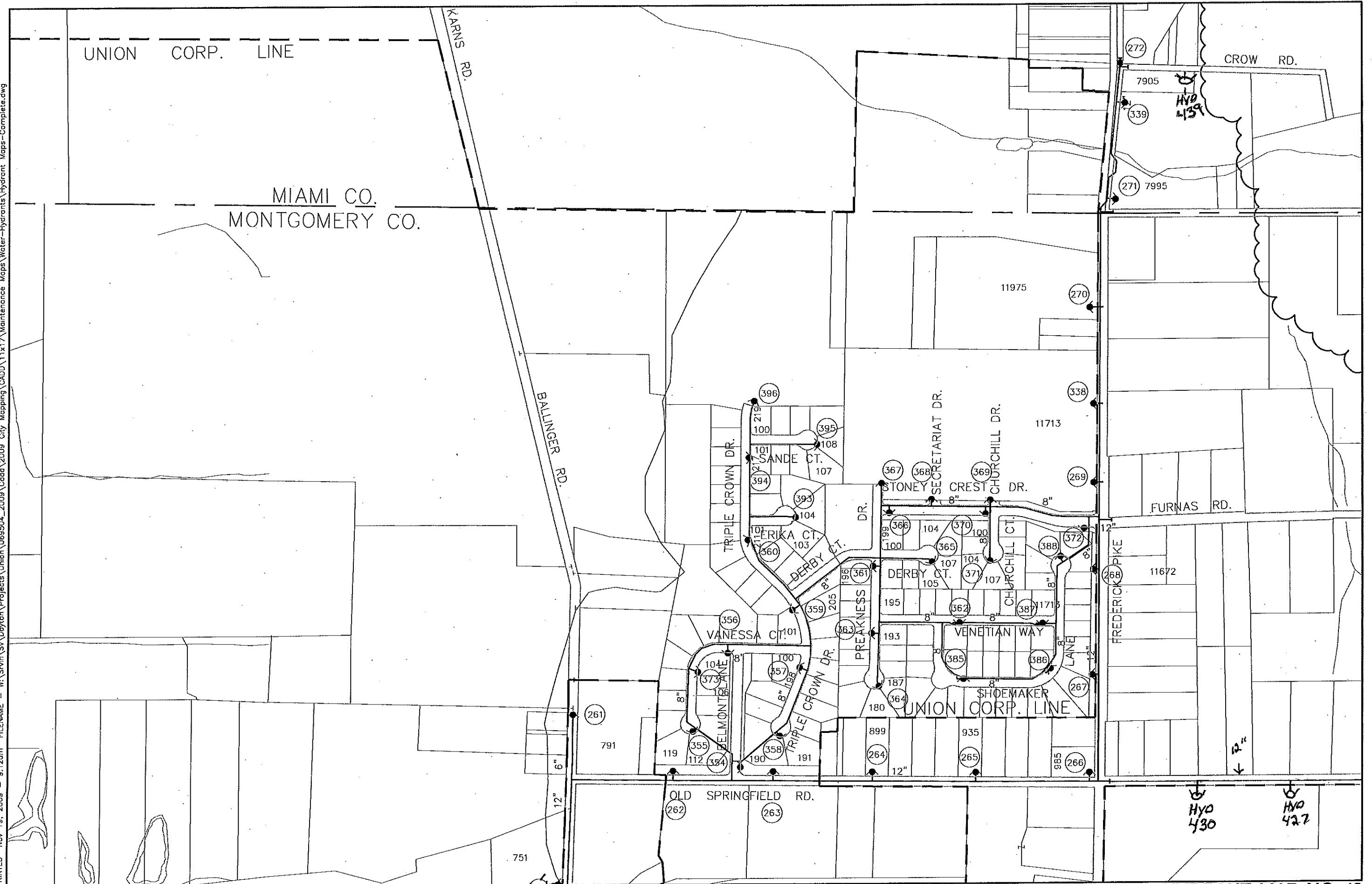






PRINTED Nov 19, 2009 - 9:12am FILENAME - W:\Srv\SV\Dayton\Projects\Union\069504_2009\Cadd\Cadd\11x17\Maintenance Maps\Water-Hydrants\Hydrant Maps-Complete.dwg





HYDRANT MAP NO. 12

