

VILLAGE OF BEVERLY
“A Small Town with a Big Welcome”

**919 Mitchell Avenue
Beverly, OH 45715
740-984-2694
beverlyvillage@midohio.twcbc.com**

The Village of Beverly is located by the Muskingum River in Washington County, Ohio. Beverly has a total area of 0.79 square miles with a population of 1,313 and 545 households (2010 Census).

The Village of Beverly operates its own Public Water System (PWS) which receives drinking water from four wells located near the bank of the Muskingum River. The Village of Beverly PWS drinking water is monitored regularly. Samples are tested for contaminants, including lead and copper, as required by the Environmental Protection Agency (EPA). Please see the attached list for location of lead and copper sampling sites.

The Village of Beverly is responsible for providing high quality drinking water but cannot control the variety of materials and components associated with service lines and plumbing. Water customers receive an annual copy of the Village of Beverly PWS Consumer Confidence Report which includes information regarding minimizing the potential for lead exposure.

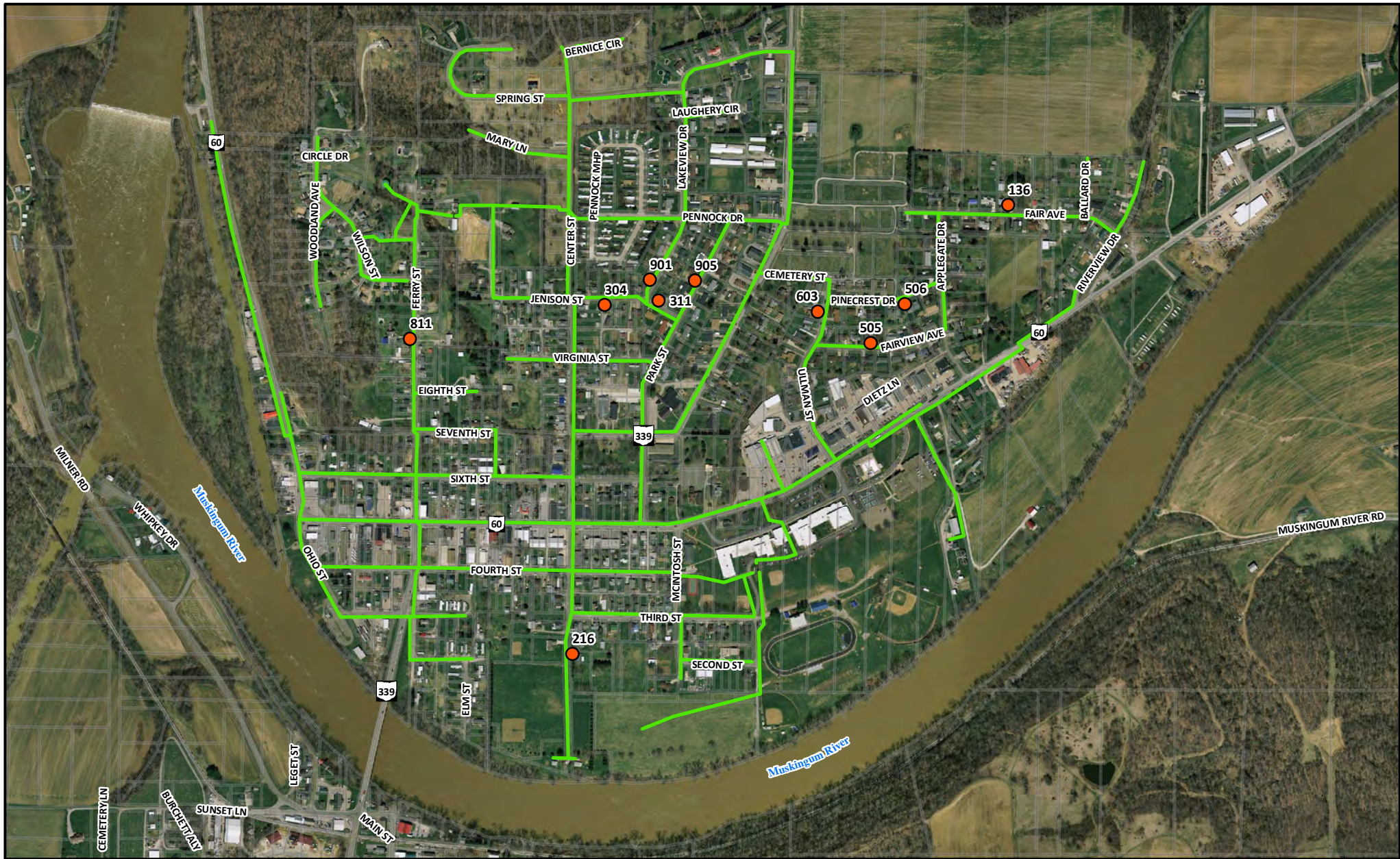
The majority of buildings and residential homes in Beverly were built in or prior to 1982. Only ten (10) houses, multi-units, or commercial buildings were built between 1983 and 1987, fourteen (14) were built between 1988 and 1997, twenty-three (23) between 1998-2013, and three (3) new structures were built in or after 2014 as of March 2017. The attached list of water customers and map will reflect the above information.

The above dates were selected to help identify distribution areas that are likely to have lead or copper with lead solder waterlines. Houses, multi-units, and commercial structures built in or prior to 1982 most likely have lead or copper with lead solder water service lines and plumbing components. In 1986, the Safe Drinking Water Act (SDWA) required the use of lead-free (no more than 8.0% lead) flux, pipes and fittings, or any plumbing fixtures. In 1998, the SDWA banned the use of lead solders which contained more than 0.25% lead. Buildings constructed in or after 2014 are the least likely to have plumbing or service lines containing lead materials because of the prohibition of selling or using lead pipes, solder, and flux in 2014.

The Village of Beverly replaced approximately 12,000 linear feet of 2” to 8” water line and installed a chlorine room and chlorine injection equipment in the existing water plant in 2013. The project included replacement of 2,150 feet of 2” galvanized pipe with 3” PVC and lead-free service saddles. Of the total 54,126 feet of waterlines in the Village of Beverly, only 400 feet of galvanized pipe remains. Meter setters are copper with lead solder but are being replaced with lead-free meter setters. Service lines from the main water line to meter setters are copper with the exception of those that were replaced with plastic during the 2013 waterline replacement project.




For more information regarding the Village of Beverly water distribution system, please contact Bryan Jarvis at (740) 984-1052 or (740) 984-8782.

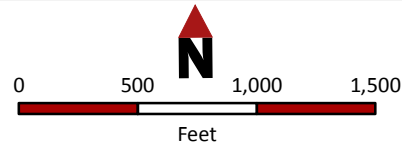
Beverly Public Water System Inventory



Disclaimer



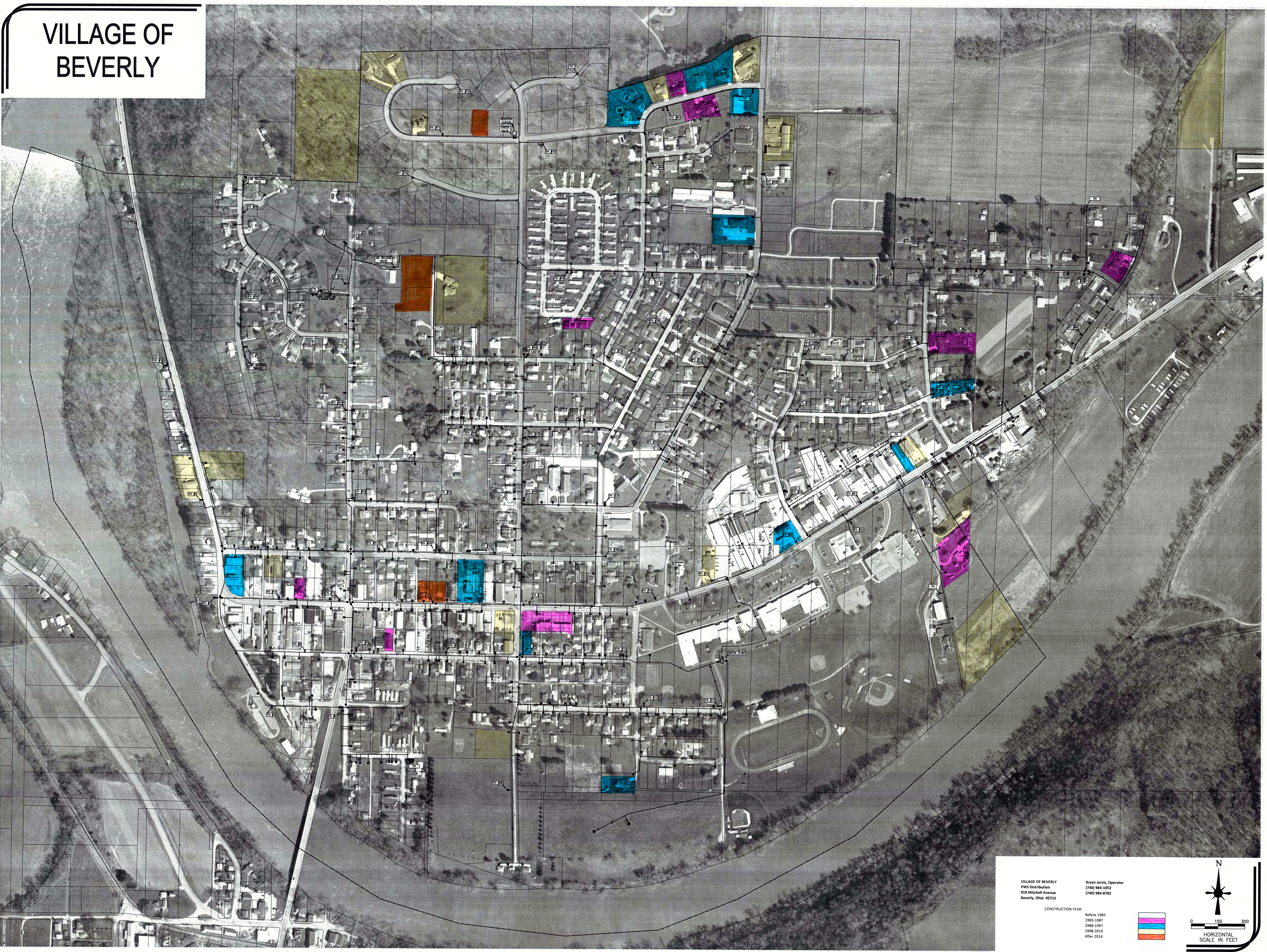
-  Sample Sites
 No-Lead
 Parcels



Map Copyright Buckeye Hills - Hocking Valley
Regional Development District, January 2017
Map Created by Dru Sexton
For questions about data sources contact a
GIS Specialist at Buckeye Hills
<http://www.buckeyehills.org> | 740.374.9436



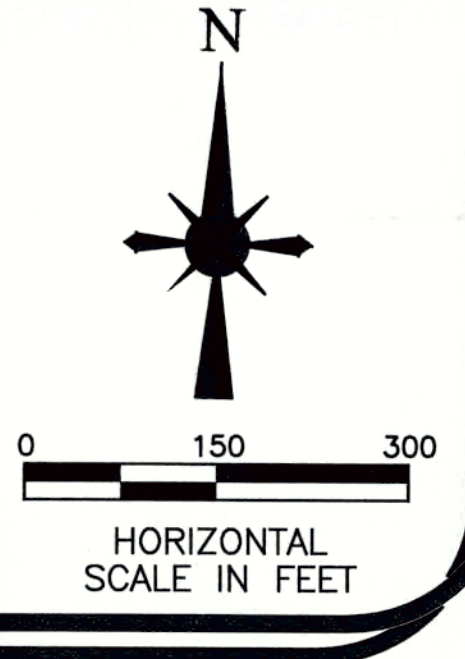
VILLAGE OF BEVERLY



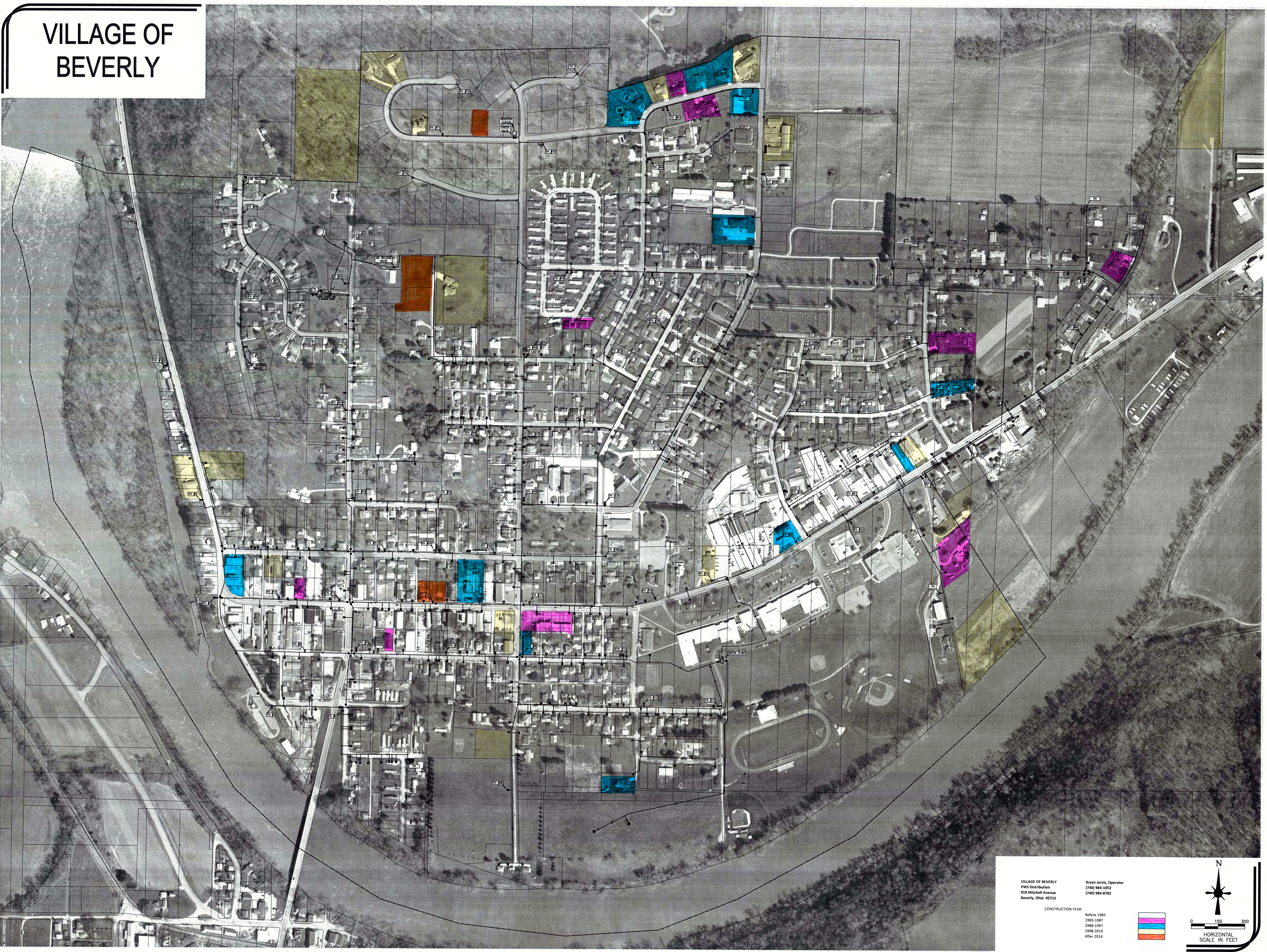
VILLAGE OF BEVERLY
PWS Distribution
913 Mitchell Avenue
Beverly, Ohio 45715

Bryan Jarvis, Operator
(740) 984-1052
(740) 984-8782

CONSTRUCTION YEAR:
Before 1983
1983-1987
1988-1997
1998-2014
After 2014



VILLAGE OF BEVERLY



VILLAGE OF BEVERLY
PWS Distribution
913 Mitchell Avenue
Beverly, Ohio 45715

Bryan Jarvis, Operator
(740) 984-1052
(740) 984-8782

CONSTRUCTION YEAR:
Before 1983
1983-1987
1988-1997
1998-2014
After 2014

