

To comply with Section 6109.21 of the Ohio Revised Code, enacted in September 2016, the Village of Mt. Pleasant in Jefferson County, Ohio has created the following report and attached map to identify known and potential components of water service lines that contain lead (Pb).

The following information and attached map do not verify the presence of lead service lines (LSLs) in any of the structures shown. The information and map only show the probable or possible locations based on the year that structures were built, or by the year that the plumbing component was installed.

Public and Private LSL Probability

The Village owns and maintains service lines from the water distribution mains up to the curb stops for each water customer. The remainder of each service line from the curb stop to the building is the responsibility of the property owner.

The tables below provide information about the possibility of lead service lines and use of leaded plumbing materials to the customers Mt. Pleasant serves. The year the structure was built, the year plumbing material was installed, or staff knowledge determines which category it falls into.

Public Service Line Lead Probability		
Possibility of Lead	Public Lines #	% of System
Non-Lead	0	0.00%
≤ 8% Lead Alloy (1998-2013)	4	1.83%
Very Low (1981-1997)	25	11.47%
Mild (1951-1980)	21	9.63%
Moderate (1921-1950)	23	10.55%
Very High (1810-1920)	23	10.55%
No Data	122	55.96%



Private Service Line Lead Probability		
Possibility of Lead	Private Lines #	% of System
Non-Lead	0	0.00%
≤ 8% Lead Alloy (1998-2013)	4	1.83%
Very Low (1981-1997)	25	11.47%
Mild (1951-1980)	21	9.63%
Moderate (1921-1950)	23	10.55%
Very High (1810-1920)	23	10.55%
No Data	122	55.96%

Mt. Pleasant Water Department staff has never observed or replaced any LSLs. The public lines that the operators remember exposing were galvanized or copper.

The Village does not record the material or install dates of customer owned service lines. Since there is no data on private lines, Mt. Pleasant is unsure if any private LSLs exist.

Distribution System

Within the distribution system, none of the pipes themselves are thought to be made of lead, however, there are joints, valves, and fittings within the system that do contain lead. Most recently a lead main valve was exposed and replaced.

Water meters at each customer location may contain more than 8% lead. Meters installed after 1998 may contain up to 8% lead. Meters installed after 2014 will have less than 0.25% lead.

Indoor Plumbing

Buildings in Ohio built prior to 1998 or that use plumbing material or solder manufactured before 1998 may have materials with greater than 8% lead and are at a higher risk of contributing lead to the drinking water than materials manufactured after 1998.

Buildings built and plumbing materials manufactured after 2014 were required to have less than 0.25% lead by weight and have the lowest risk for contributing lead to the drinking water. It should be noted however that, although prohibited, some use of leaded solder or leaded components may have occurred after the prohibitions became effective.

Customer Self-Reporting

The information on this map regarding privately owned service lines is based on the limited information from the water system staff and Jefferson County building and parcel data. Property owners are encouraged to inspect their own service lines entering the building if these are in anyway exposed, and notify the Village of Mt. Pleasant Water Department if they have determined whether or not a lead service line exists. Please contact the Water Billing Clerk by calling (740)-769-7995. A representative from the water department will contact you to confirm and update this information for the next map release.

Contacts and Resources

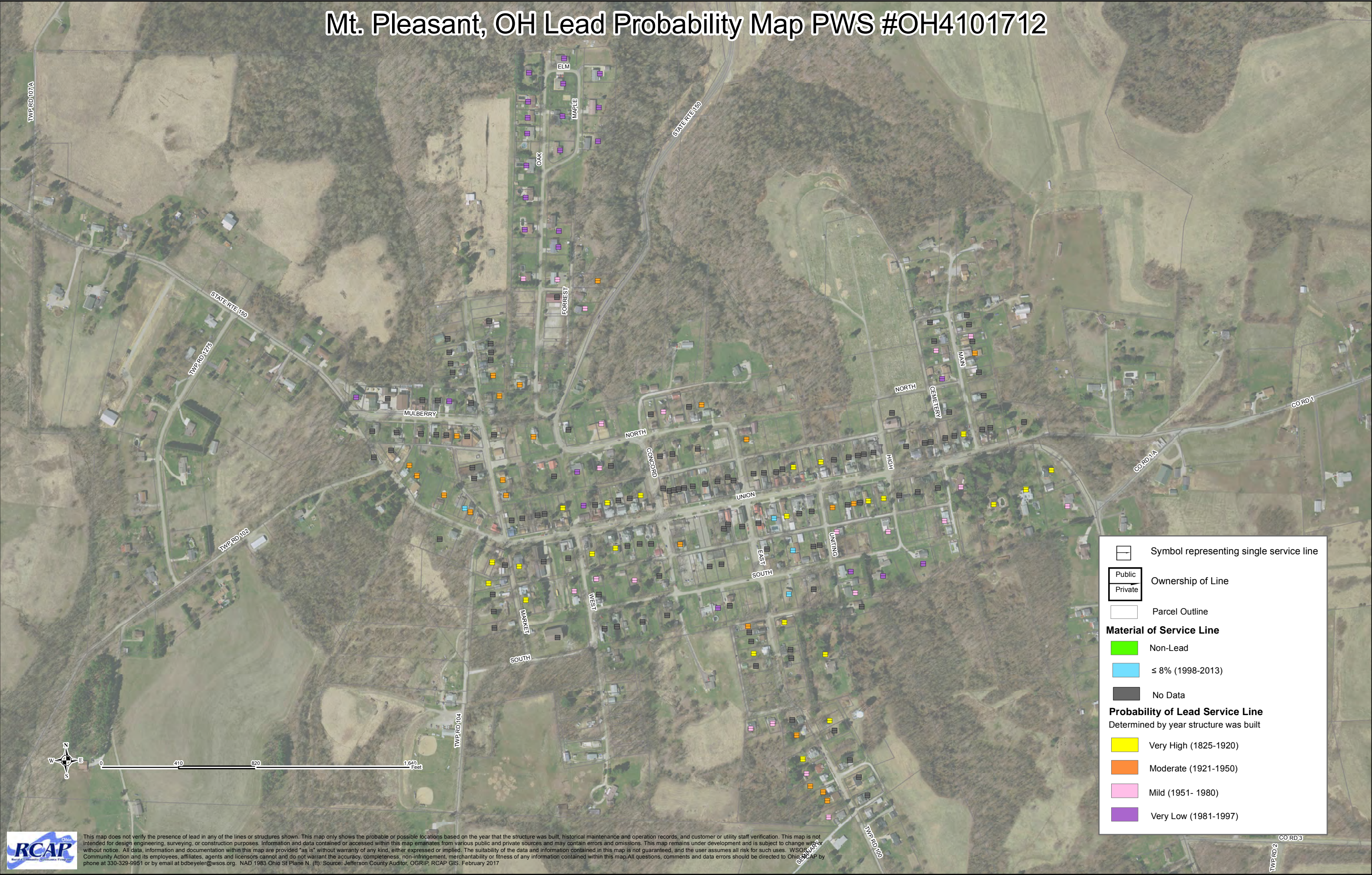
If you have questions about known and potential lead components within the Village of Mt. Pleasant Public Water System, please contact:

Mt. Pleasant Water Department
4610 State Route 150
Dillonvale, OH 43917
(740) 769-7995

For more information about lead service lines and their removal, we recommend the following resources:

- **The Lead Service Line Replacement Collaborative**
<http://www.lslr-collaborative.org/resources-for-concerned-consumers.html>
- **Ohio EPA 'Learn About Lead' page** <http://epa.ohio.gov/pic/lead.aspx>
- **US EPA Lead in Drinking Water Information Page**
<https://www.epa.gov/ground-water-and-drinking-water/basic-information-about-lead-drinking-water>

Mt. Pleasant, OH Lead Probability Map PWS #OH4101712



This map does not verify the presence of lead in any of the lines or structures shown. This map only shows the probable or possible locations based on the year that the structure was built, historical maintenance and operation records, and customer or utility staff verification. This map is not intended for design engineering, surveying, or construction purposes. Information and data contained or accessed within this map emanates from various public and private sources and may contain errors and omissions. This map remains under development and is subject to change without notice. All data, information and documentation within this map are provided "as is" without warranty of any kind, either expressed or implied. The suitability of the data and information contained in this map is not guaranteed, and the user assumes all risk for such uses. WSOS, Community Action and its employees, affiliates, agents and licensors cannot and do not warrant the accuracy, completeness, non-infringement, merchantability or fitness of any information contained within this map. All questions, comments and data errors should be directed to Ohio RCAP by phone at 330-329-9951 or by email at dbeyeler@wsos.org. NAD 1983 Ohio St Plane N. (ft). Source: Jefferson County Auditor, OGRIP, RCAP GIS. February 2017