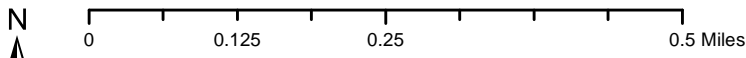
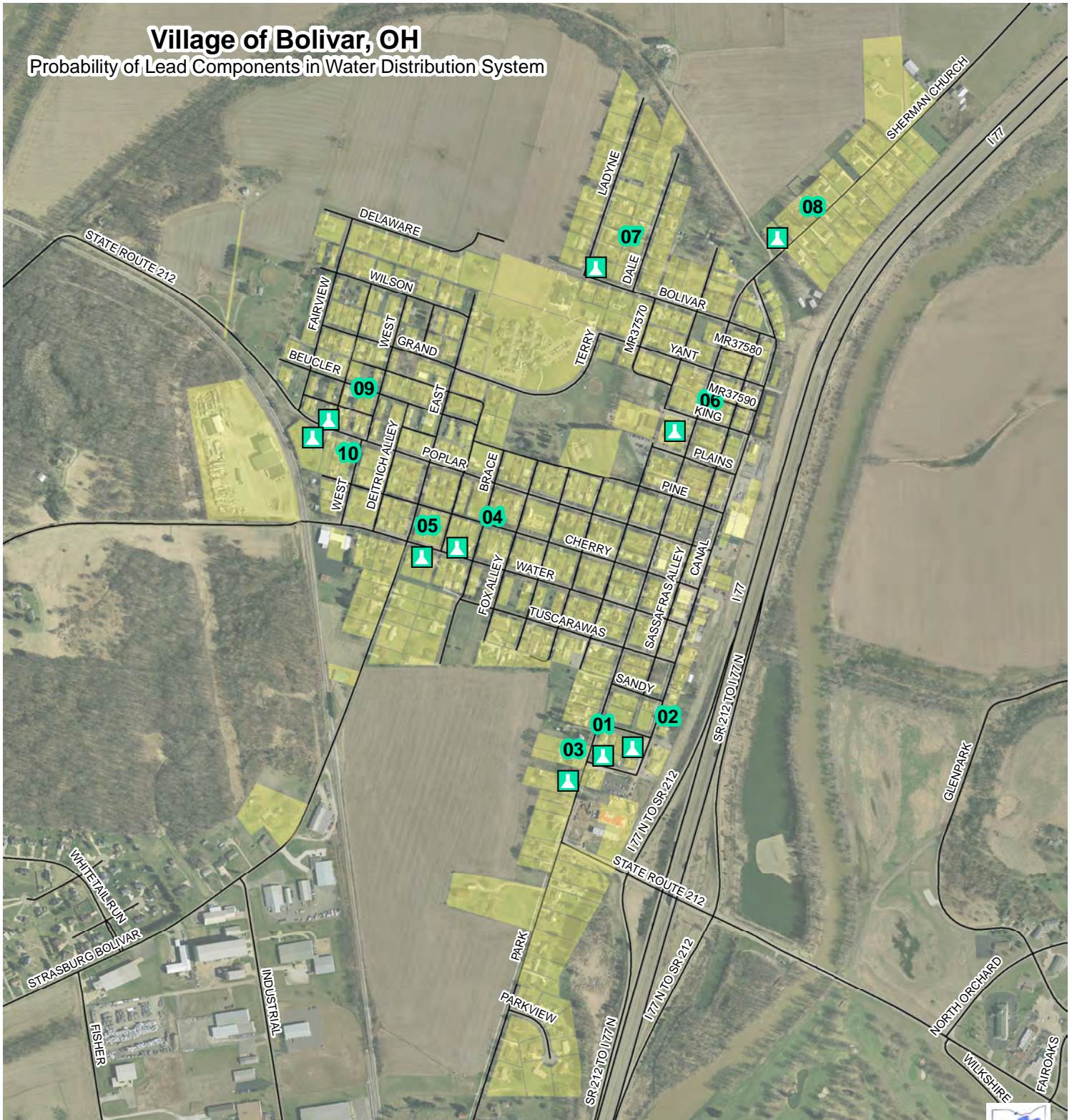

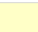


# Village of Bolivar, OH

## Probability of Lead Components in Water Distribution System



-  Bolivar Lead & Copper Sampling Sites
-  Bolivar Water Service Area

Created for use by The Village of Bolivar  
By RCAP GIS Team  
February 1, 2017



Buildings in Ohio built prior to 1998 or that use plumbing material or solder manufactured before 1998 may have materials with greater than 8% lead and are at a higher risk of contributing lead to the drinking water than materials manufactured after 1998.

In addition, buildings built and plumbing materials manufactured after 2014 were required to have less than 0.25% lead by weight and have the lowest risk for contributing lead to the drinking water. It should be noted however that, although prohibited, some use of leaded solder or leaded components may have occurred after the prohibitions became effective.

STATION ID	ADDRESS	STATION ID	ADDRESS
1	SOUTH PARK AVE 365	6	NORTH PARK AVE 216
2	SOUTH PARK AVE 432	7	LADYNE 509
3	LAWRENCE ST 140	8	SHERMAN CHURCH 12110
4	WATER STREET 317	9	POPLAR 553
5	WATER STREET 348	10	POPLAR 540

Coordinate System:  
NAD 1983 StatePlane Ohio North FIPS 3401 Feet  
Data Sources:  
Village of Bolivar, Tuscarawas County Auditor, RCAP GIS Team,  
ESRI, OGRIP, OSIP, TIGER Lines