

## **NONTRANSIENT NONCOMMUNITY PUBLIC WATER SYSTEM DESCRIPTION FOR:**

FIRSTENERGY GENERATION CORP.

W. H. SAMMIS PLANT

29503 STATE ROUTE 7

STRATTON, OH 43961

PHONE: 740-537-1546

PWS IDs: OH4136412 AND OH136422

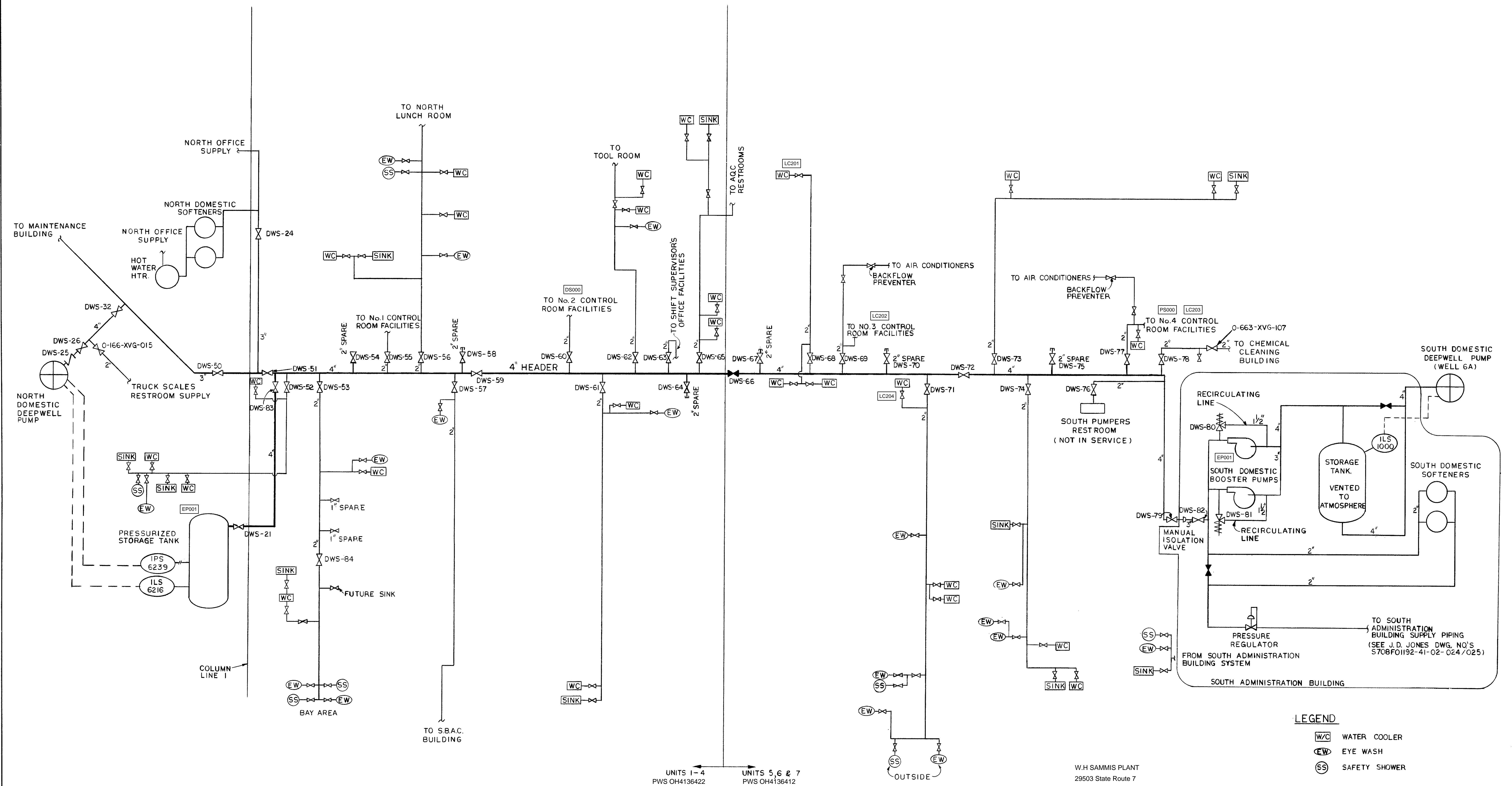
THE FIRSTENERGY GENERATION CORP., W. H. SAMMIS PLANT CONSISTS OF SEVERAL BUILDINGS THAT ARE SUPPLIED WITH POTABLE WATER FROM TWO PUBLIC WATER SYSTEMS, OH4136412 AND OH4136422. ONE BUILDING IS SUPPLIED WITH POTABLE WATER FROM THE VILLAGE OF STRATTON.




THE NORTH SYSTEM, OH4136422, SUPPLIES WATER TO THE NORTH HALF OF THE MAIN PLANT BUILDING AND THE YARD MAINTENANCE BUILDING. A DEEP WELL PUMP SUPPLIES WATER TO A PRESSURE TANK WHICH DISTRIBUTES THE WATER TO THE 2 LOCATIONS. THE PORTION OF THE SYSTEM IN THE MAIN PLANT WAS INSTALLED PRIOR TO 1982, SO IT IS PROBABLE THAT SOLDER USED IN THE SYSTEM CONTAINS LEAD, ALTHOUGH THIS IS NOT DOCUMENTED. THERE ARE NO KNOWN LEAD SERVICE LINES, ALTHOUGH THIS ALSO IS NOT DOCUMENTED. THE PORTION OF THE NORTH SYSTEM IN THE YARD MAINTENANCE BUILDING WAS INSTALLED IN 1984 SO IT MAY ALSO CONTAIN LEAD SOLDER. THERE ARE NO KNOWN LEAD SERVICE LINES, BUT THIS IS NOT DOCUMENTED. THE NORTH SYSTEM SUPPLIES HOT AND COLD WATER TO SHOWERS AND SINKS AND COLD WATER TO TOILETS AND A FEW WATER COOLERS.




THE SOUTH SYSTEM, OH4136412, SUPPLIES WATER TO THE SOUTH HALF OF THE MAIN PLANT BUILDING, THE SOUTH ADMINISTRATION BUILDING, THE EMPLOYEE FACILITIES BUILDING, AND THE STOREROOM ANNEX BUILDING. A PRESSURE TANK IN THE ANNEX BUILDING SUPPLIES WATER TO THE A/B ABSORBER BUILDING, LIMESTONE PREP. BUILDING AND WASTE WATER TREATMENT PLANT BUILDING. WATER ENTERS THE SOUTH SYSTEM FROM A DEEP WELL PUMP THAT SUPPLIES WATER TO A HOLDING TANK IN THE BASEMENT OF THE SOUTH ADMINISTRATION BUILDING. WATER IS THEN PUMPED TO THE OTHER LOCATIONS. THE PORTION OF THE SOUTH SYSTEM IN THE MAIN PLANT BUILDING AND SOUTH ADMINISTRATION BUILDING WAS INSTALLED PRIOR TO 1983, HOWEVER, THERE HAD BEEN SOME REMODELING WORK DONE IN THE ADMINISTRATION BUILDING AFTER 1986. IT IS PROBABLE THAT SOME OF THE SOLDER USED IN THE SYSTEM CONTAINS LEAD, ALTHOUGH THIS IS NOT DOCUMENTED. THERE ARE NO KNOWN LEAD SERVICE LINES, ALTHOUGH THIS ALSO IS NOT DOCUMENTED. THE EMPLOYEE FACILITIES BUILDING WAS INSTALLED AFTER 1986 AND IS NOT EXPECTED TO CONTAIN LEAD SOLDER OR LEAD PIPES, BUT THIS IS NOT DOCUMENTED. THE STOREROOM ANNEX BUILDING AND ABSORBER BUILDING WERE INSTALLED IN 2008 SO NO LEAD SOLDER OR PIPES ARE PRESENT BASED ON THE SPECIFICATIONS FOR THE BUILDING. THE SYSTEM SUPPLIES HOT AND COLD WATER TO SHOWERS AND SINKS AND COLD WATER TO TOILETS AND EYE WASH STATIONS.

THERE IS A TIE VALVE BETWEEN THE NORTH AND SOUTH SYSTEMS THAT ALLOWS EITHER SYSTEM TO SUPPLY ALL OF THE BUILDINGS IF NECESSARY.

POTABLE WATER IN THE SECONDARY DEWATERING BUILDING IS SUPPLIED BY THE VILLAGE OF STRATTON. THE BUILDING WAS BUILT 2008-2010 SO NO LEAD SOLDER OR PIPES ARE PRESENT BASED ON THE SPECIFICATIONS FOR THE BUILDING.

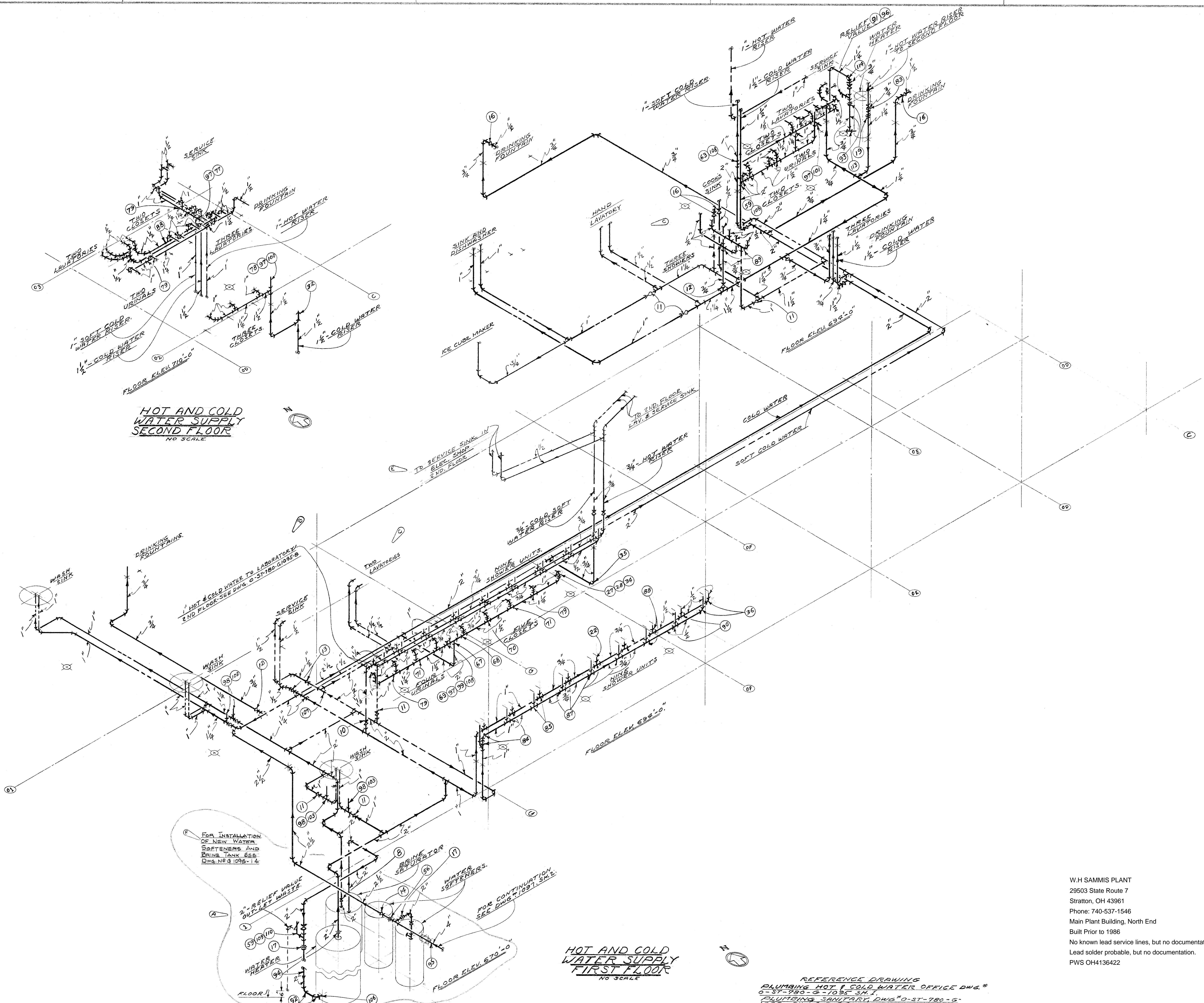


	WATER COOLER
	EYE WASH
	SAFETY SHOWER

	WATER COOLER
	EYE WASH
	SAFETY SHOWER

FORM 159 (REV. 12-85) ID NO. 580-231-8





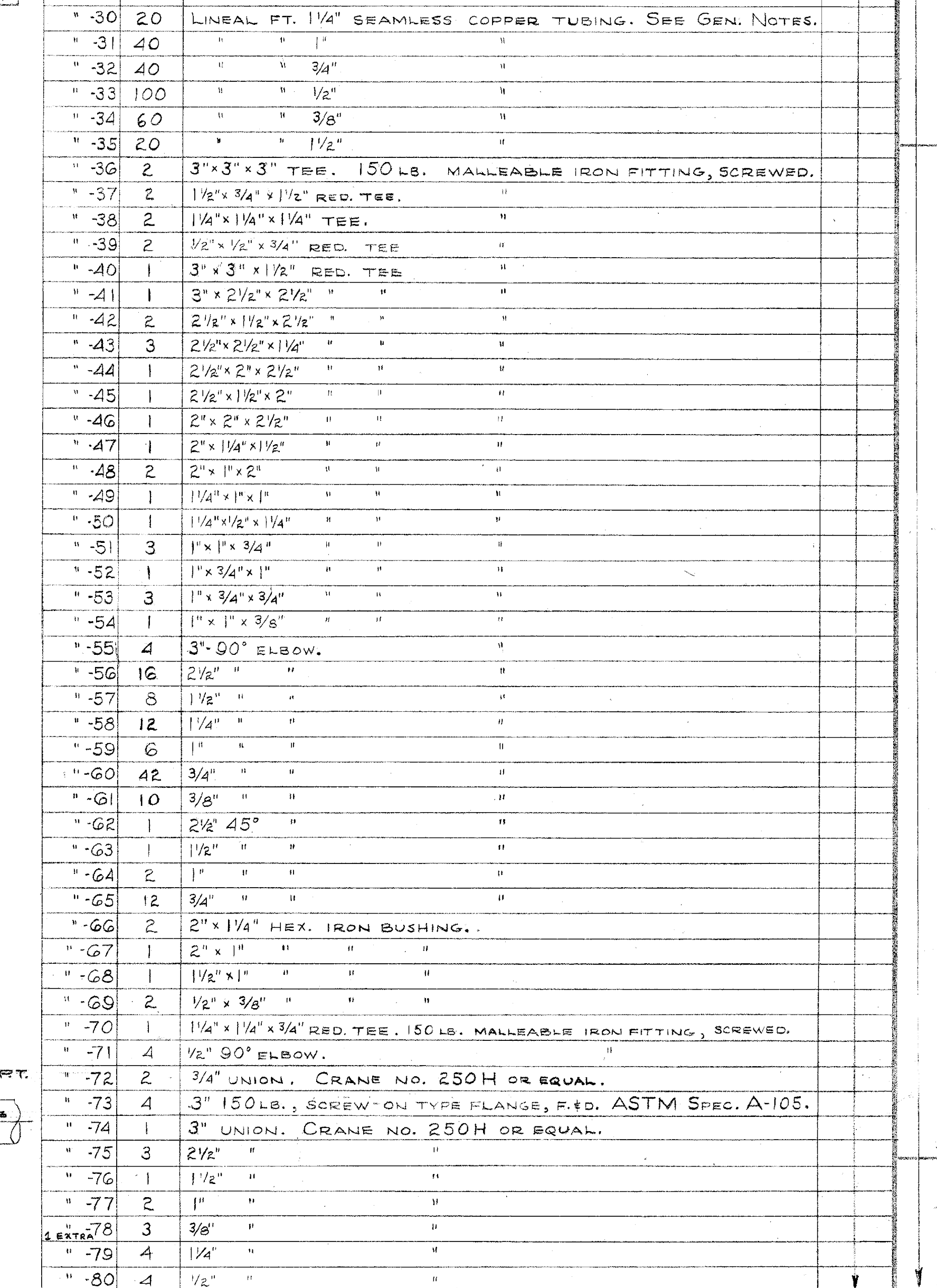
W.H. SAMMIS PLANT  
 29503 State Route 7  
 Stratton, OH 43961  
 Phone: 740-537-1546  
 Main Plant Building, North End  
 Built Prior to 1986  
 No known lead service lines, but no documentation.  
 Lead solder probable, but no documentation.  
 PWS OH4136422

REFERENCE DRAWING  
 PLUMBING HOT & COLD WATER OFFICE DWG. #  
 O-ST-780-G-1095-SH.1  
 PLUMBING SANITARY DWG. # O-ST-780-G-  
 1095-SH.1, 2, 3, 4

REV. DATE DESCRIPTION F 10-4 ADDED NOTE TO ISOMETRIC TO REFER TO NEW INSTALLATION OF SOFTENERS & BRINE TANKS. E 7/1/57 ADDED HOT & COLD WATER SERVICE SINK IN ELEC. SHOP	L.T. J. PERKINS APPROVED: <i>[Signature]</i>	D 9/6/56 DUG. W. WAS G-1096-G C 9/6/56 KITCHEN & TOILET LAVATORY PIPING ADDED B 5/24/56 CONNECTIONS FOR LAB. HOT & COLD WATER ADDED A 2/14/56 PROVIDE 2" OUTLET WASTE FROM RELIEF VALVE	J.M.M. J. PERKINS APPROVED: <i>[Signature]</i>	DESIGN AND DRAFTING J.S. Bury DATE 10-9-57 APPROVED: <i>[Signature]</i> DATE 11-13-57	OWNER AND LOCATION W.H. SAMMIS PLANT COMMONWEALTH ASSOCIATES INC. 202 E. WASHINGTON AVE. JACKSON, MISS.	TITLE PLUMBING HOT AND COLD WATER ISOMETRICS - OFFICE SCALE: NO SCALE 4-20-147-3 O-ST-780-G-1095 F 2
--	---	--	---	--	--	---



MARK		QUAN.		DESCRIPTION	REQD.	POI.
QTY	UNIT	QTY	UNIT			
2	54	1		3" 90LB TO 40 LB. PRESSURE REDUCING VALVE, FISHER TYPE 657A	5150	5622
2	2			3" 125 I.B. FLSD, I.B., SOLID WEDGE, O.S.F.Y. GATE VALVE, O.I.C. NO. 140	5099 MEI	
3	1			3" " " ALL IRON GLOBE VALVE, O.I.C. NO. 116.		
4	3			2 1/2" 200LB. BRONZE, RISING STEM GATE VALVE, SCREWED, O.I.C. NO. 1200	1	
5						
6	4			1 1/2" " "	5099 MEI	
7	7			1 1/2" " "		
8	4			1" " "		
9	5			3/4" " "		
10	3			3/8" " "		
11	8			3/4" 200LB BRONZE HOSE GATE VALVE, GARDEN HOSE TH'D. O.I.C. NO. 109.		
12	1			3/4" 125 LB SILCOCK, NON-FREEZE TYPE, " "	FIELD FURNISH	
13	1			1 1/4" 125 LB. BRONZE SWING CHECK VALVE, O.I.C. NO. 134.	5099 MEI	
14	2			1" " "		
15	1			1 1/4" 125 LB. BRONZE GLOBE VALVE, SCREWED, O.I.C. NO. 234.	1	
16	1			3/4" BRASS ANGLE HOSE VALVE, GARDEN HOSE THREAD.	FIELD FURNISH	
17						
18						
19						
20	20			LINEAL FT. 3" STD. STEEL PIPE. SEE GENERAL NOTBS.	5199 MEI	
21	160			" " 2 1/2" "		
22	40			" " 2" "		
23	20			" " 1 1/2" "		
24	120			" " 1 1/4" "		
25	300			" " 1" "		
26	180			" " 3/4" "		
27	100			" " 3/8" "		
28	10			" " 1/2" "		
29	2			1 1/2" x 1 1/4" HEX IRON BUSHING.		



⑤ \* 1 of Item 7 & 13 to be put in stock.

## GENERAL NOTES

1. STEEL PIPING: ASTM SPEC A-53 OR A-106, SCHEDULE 40, THREADED ENDS WITH STEEL COUPLINGS. GALVANIZED.
2. COPPER TUBING: TYPE L WEIGHT.
3. STEEL FITTINGS: TO BE GALVANIZED.
4. HANGERS: ALL PIPE TO BE RUN IN THE FIELD & SUPPORT PROVIDED.

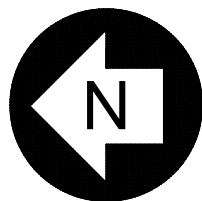
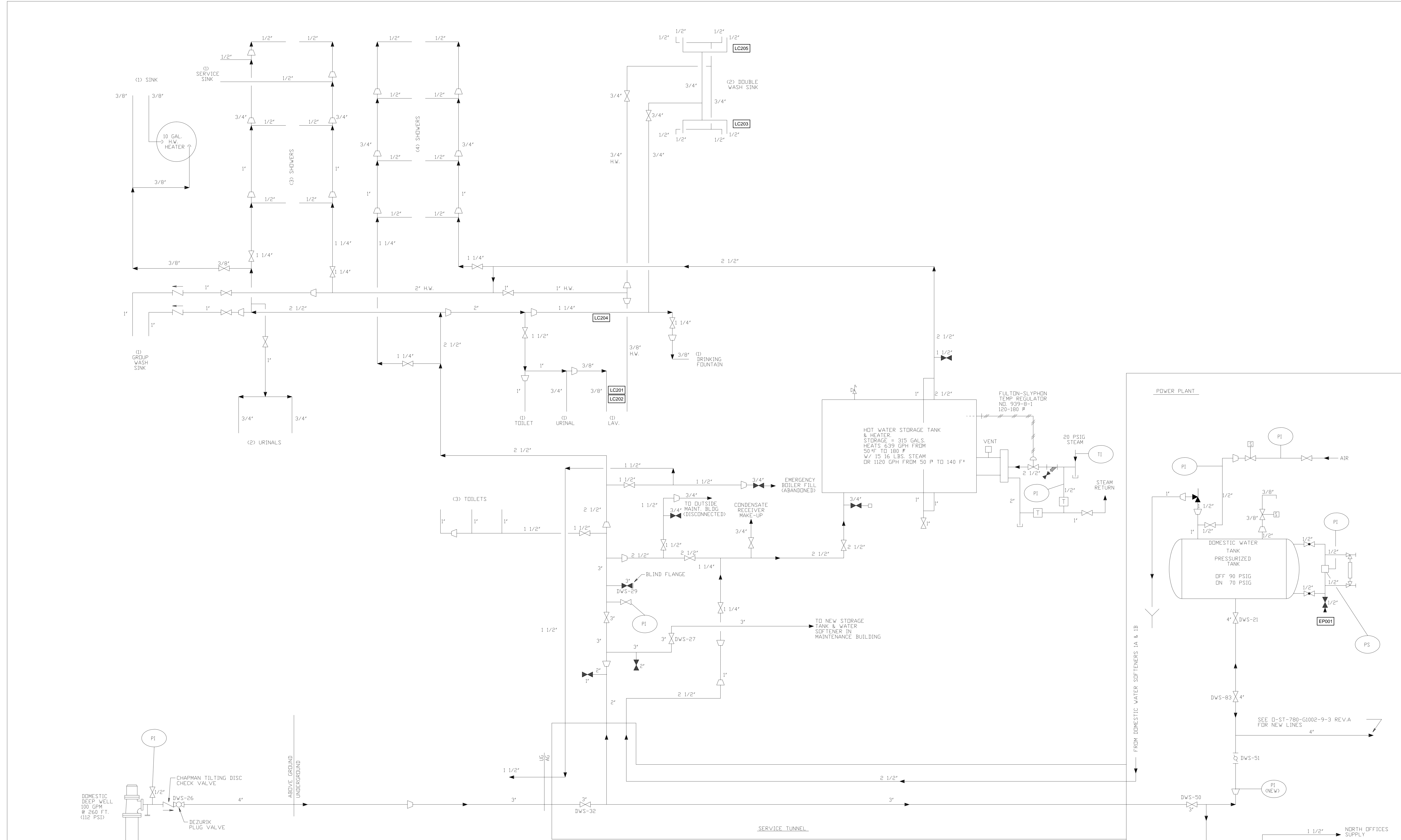
REFERENCE DWGS:  
 BOILER ROOM ARRANGEMENT - G1157.  
 ARCHITECTURAL LAYOUT - G1591.  
 CONCRETE - G1641 SHS. 2, 3, 4, 5, 6.  
 STEEL - G1341 SHS. 2, 3, 4, 5, 6.  
 SANITARY PIPING - G1154  
 HOUSE SERVICE PIPING - G1070  
 SERVICE TUNNEL PIPING - G1133

W.H SAMMIS PLANT  
29503 State Route 7  
Stratton, OH 43961  
Phone: 740-537-1546  
Yard Maintenance Building  
Built Prior to 1986  
No known lead service lines  
Lead solder probable, but not confirmed  
PWS OH4136422

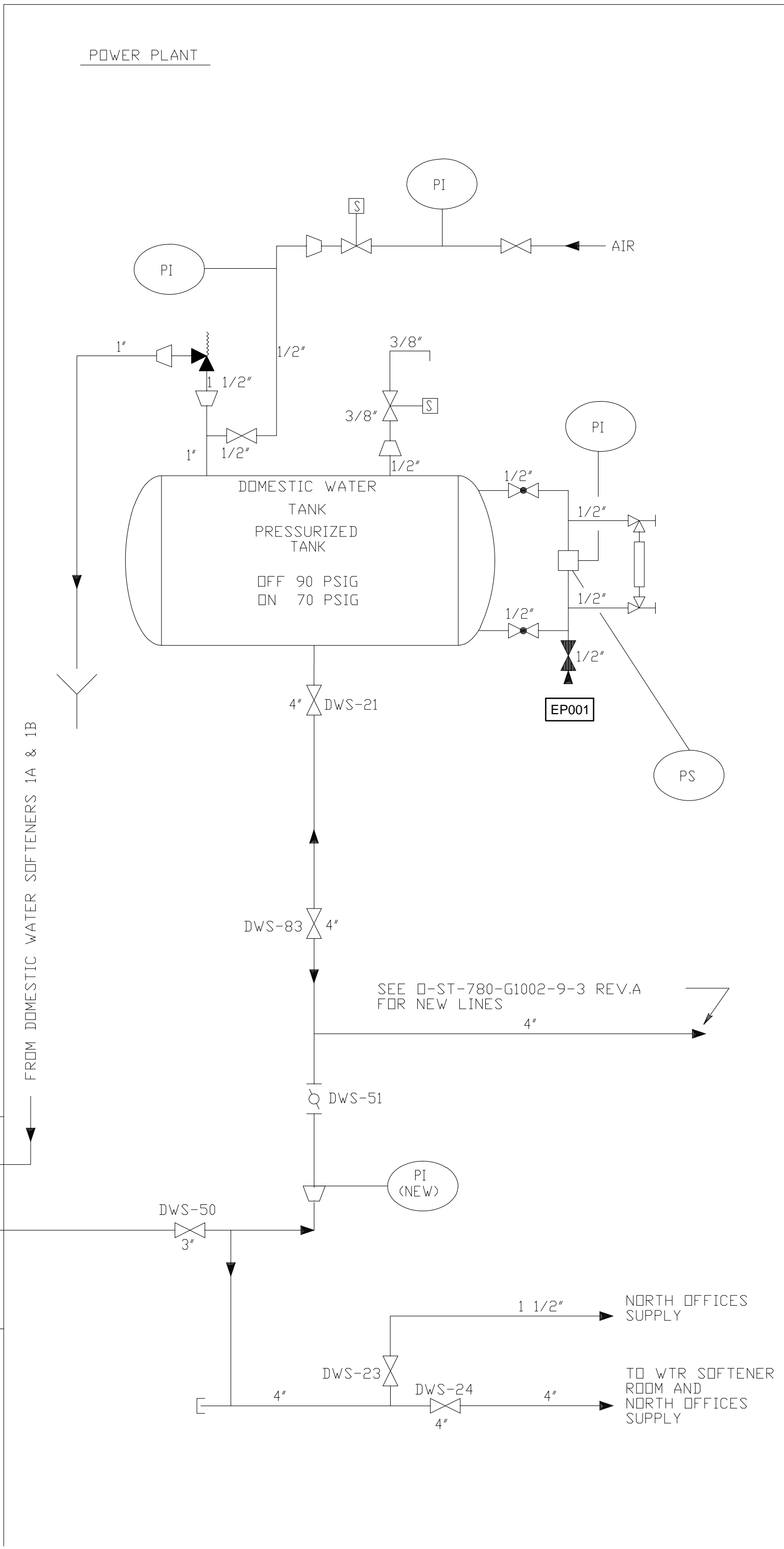
PWS OH413642:

10-4	REVISED ISOMETRIC TO DELETE EXISTING WATER SOFTENER AND TIE-IN LINE FROM MAIN BUILDING.	L.T.	RAH.	D	11-1-57	Removed interconnecting of Raw Water & Well Water	WVC	WVC	DESIGN AND DRAFTING	JUNE 18, '56	(SEAL)	PREPARED UNDER RESPONSIBLE SUPERVISION OF	OWNER AND LOCATION	TITLE
G	ADDED DETAIL "A" & "B" ITEMS 112, 113, & 114.	HAZ	aut	C	11-1-57	Item 1 Refers to "140" w/o 90" to 30"	WVC	WVC	DATE	7-2-56		W. V. CRANE	W.H. SAMMIS PLANT	PLUMBING - MAINTENANCE BLDG.
F	REVISED DRAWING TO SHOWER SINKS, TOILETS, ETC. TO DOMESTIC WATER. EXISTING WASH WATER SOURCE TO WELL WATER. CHANGED TITLE CANNED TO B.M.	J.M.M.	WVC	B	1-8-57	REVISED WATER SOFTENER CONNECTIONS.	HAZ	WVC	DATE	7-2-56		PROFESSIONAL REGISTRATION NO. 2942	OHIO EDISON COMPANY	HOT & COLD WATER PIPING
E	DELETED PIPING TO DRIP TANKS. ADDED NOTE FOR SHUT OFF VALVES.	HAZ	WVC	A	11-1-56	REVISED TO DATE	WVC	WVC	DATE	11/6/56		COMMONWEALTH ASSOCIATES INC.	AKRON, OHIO	
REV.	DATE	DESCRIPTION	APPROVED	REV.	DATE	DESCRIPTION	BY	APPROVED	DATE			SCALE: NOTED	0-ST-780-G1151	

## UNITS 1 & 2



W.H SAMMIS PLANT  
29503 State Route 7  
Stratton, OH 43961  
Phone: 740-537-1546  
Yard Maintenance Building  
Built Prior to 1986  
No known lead service lines, but no documentation.  
Lead solder probable, but no documentation.  
PWS OH4136422



07	071690
JEZ	P8832 00005

DWG. NO.	REFERENCE DWG.	REV.	DATE	BY	APP.	DESCRIPTION	REV.	DATE	BY	APP.	DESCRIPTION	REV.	DATE	BY	APP.	DESCRIPTION	REV.	DATE	BY	APP.	DESCRIPTION

THIS IS A CADD DRAWING - DO NOT MANUALLY REVISE

DIV. GENERAL OFFICE	DEPT. GENERATING PLANT ENGR.
SCALE NONE	JOB NO. Y3919
DR. DKS	DATE 6/24/90
CHEMSTRESS	DATE 7/12/90
INSPI.	DATE 7/12/90

W.H. SAMMIS PLANT	DWG. NO. 0-ST-780-G1151	SHEET 2	REV. 1
-------------------	-------------------------	---------	--------