

NONTRANSIENT NONCOMMUNITY PUBLIC WATER SYSTEM DESCRIPTION FOR:

FIRSTENERGY GENERATION CORP.

W. H. SAMMIS PLANT

29503 STATE ROUTE 7

STRATTON, OH 43961

PHONE: 740-537-1546

PWS IDs: OH4136412 AND OH136422

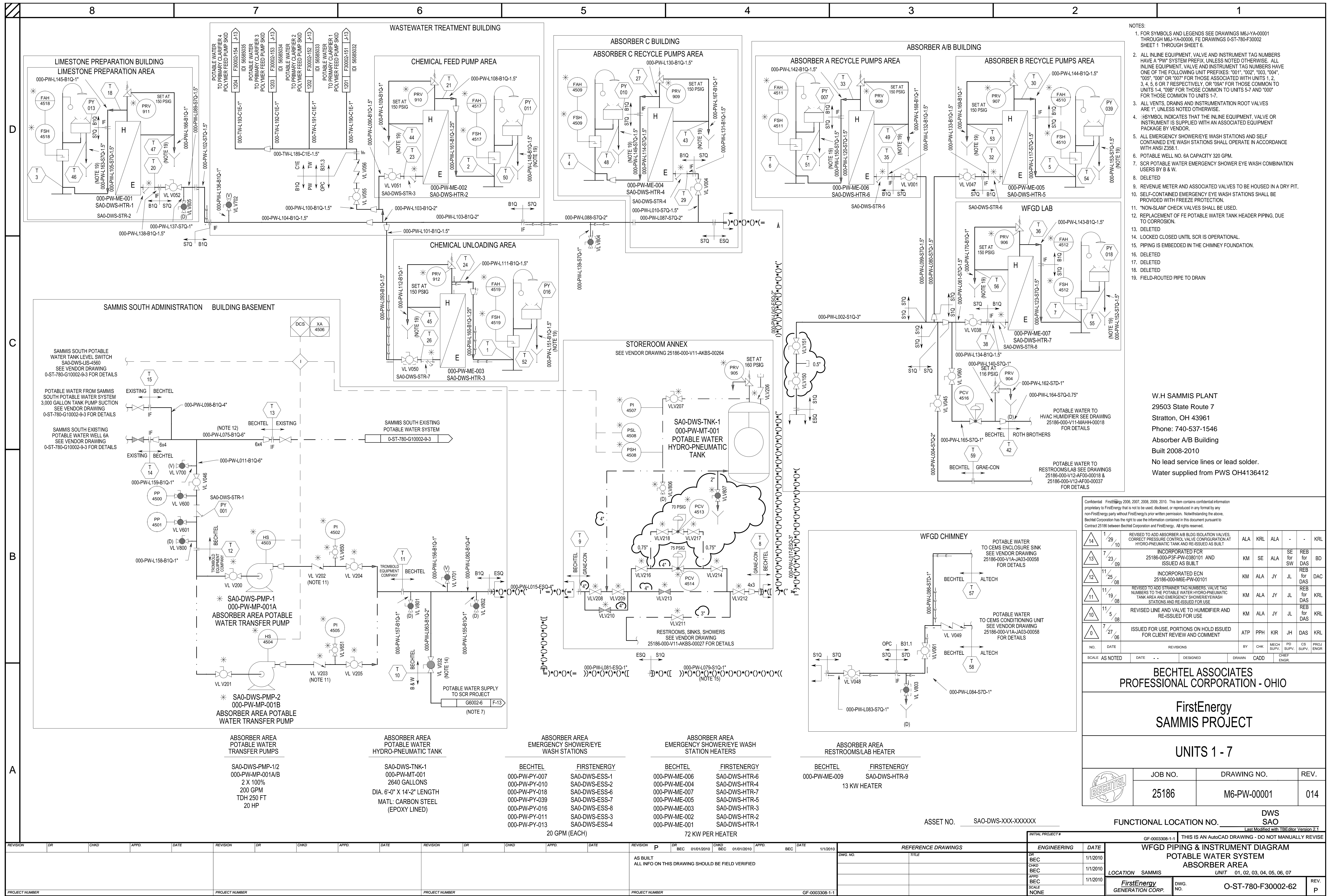
THE FIRSTENERGY GENERATION CORP., W. H. SAMMIS PLANT CONSISTS OF SEVERAL BUILDINGS THAT ARE SUPPLIED WITH POTABLE WATER FROM TWO PUBLIC WATER SYSTEMS, OH4136412 AND OH4136422. ONE BUILDING IS SUPPLIED WITH POTABLE WATER FROM THE VILLAGE OF STRATTON.

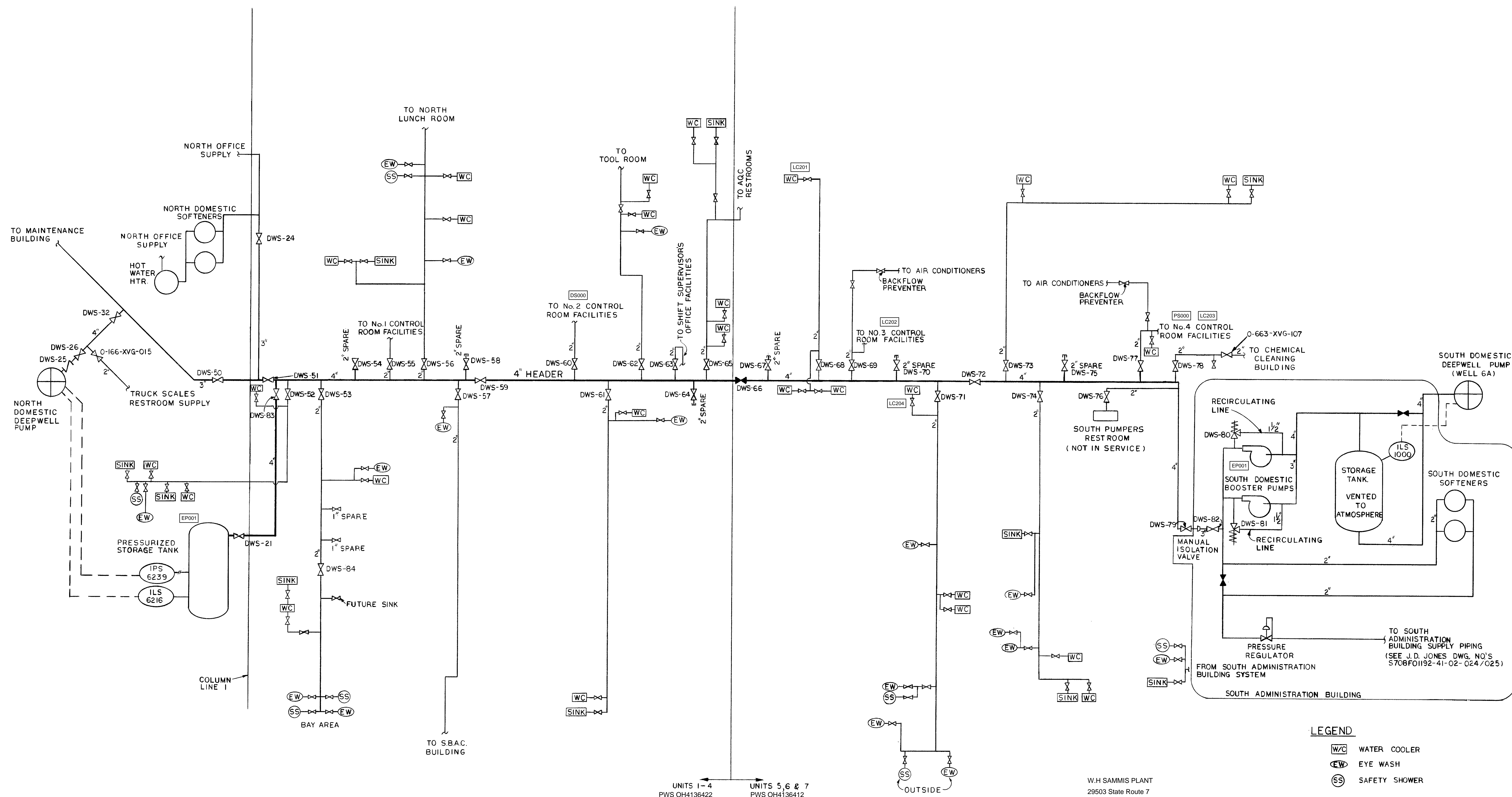
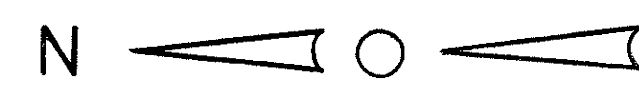
THE NORTH SYSTEM, OH4136422, SUPPLIES WATER TO THE NORTH HALF OF THE MAIN PLANT BUILDING AND THE YARD MAINTENANCE BUILDING. A DEEP WELL PUMP SUPPLIES WATER TO A PRESSURE TANK WHICH DISTRIBUTES THE WATER TO THE 2 LOCATIONS. THE PORTION OF THE SYSTEM IN THE MAIN PLANT WAS INSTALLED PRIOR TO 1982, SO IT IS PROBABLE THAT SOLDER USED IN THE SYSTEM CONTAINS LEAD, ALTHOUGH THIS IS NOT DOCUMENTED. THERE ARE NO KNOWN LEAD SERVICE LINES, ALTHOUGH THIS ALSO IS NOT DOCUMENTED. THE PORTION OF THE NORTH SYSTEM IN THE YARD MAINTENANCE BUILDING WAS INSTALLED IN 1984 SO IT MAY ALSO CONTAIN LEAD SOLDER. THERE ARE NO KNOWN LEAD SERVICE LINES, BUT THIS IS NOT DOCUMENTED. THE NORTH SYSTEM SUPPLIES HOT AND COLD WATER TO SHOWERS AND SINKS AND COLD WATER TO TOILETS AND A FEW WATER COOLERS.

THE SOUTH SYSTEM, OH4136412, SUPPLIES WATER TO THE SOUTH HALF OF THE MAIN PLANT BUILDING, THE SOUTH ADMINISTRATION BUILDING, THE EMPLOYEE FACILITIES BUILDING, AND THE STOREROOM ANNEX BUILDING. A PRESSURE TANK IN THE ANNEX BUILDING SUPPLIES WATER TO THE A/B ABSORBER BUILDING, LIMESTONE PREP. BUILDING AND WASTE WATER TREATMENT PLANT BUILDING. WATER ENTERS THE SOUTH SYSTEM FROM A DEEP WELL PUMP THAT SUPPLIES WATER TO A HOLDING TANK IN THE BASEMENT OF THE SOUTH ADMINISTRATION BUILDING. WATER IS THEN PUMPED TO THE OTHER LOCATIONS. THE PORTION OF THE SOUTH SYSTEM IN THE MAIN PLANT BUILDING AND SOUTH ADMINISTRATION BUILDING WAS INSTALLED PRIOR TO 1983, HOWEVER, THERE HAD BEEN SOME REMODELING WORK DONE IN THE ADMINISTRATION BUILDING AFTER 1986. IT IS PROBABLE THAT SOME OF THE SOLDER USED IN THE SYSTEM CONTAINS LEAD, ALTHOUGH THIS IS NOT DOCUMENTED. THERE ARE NO KNOWN LEAD SERVICE LINES, ALTHOUGH THIS ALSO IS NOT DOCUMENTED. THE EMPLOYEE FACILITIES BUILDING WAS INSTALLED AFTER 1986 AND IS NOT EXPECTED TO CONTAIN LEAD SOLDER OR LEAD PIPES, BUT THIS IS NOT DOCUMENTED. THE STOREROOM ANNEX BUILDING AND ABSORBER BUILDING WERE INSTALLED IN 2008 SO NO LEAD SOLDER OR PIPES ARE PRESENT BASED ON THE SPECIFICATIONS FOR THE BUILDING. THE SYSTEM SUPPLIES HOT AND COLD WATER TO SHOWERS AND SINKS AND COLD WATER TO TOILETS AND EYE WASH STATIONS.

THERE IS A TIE VALVE BETWEEN THE NORTH AND SOUTH SYSTEMS THAT ALLOWS EITHER SYSTEM TO SUPPLY ALL OF THE BUILDINGS IF NECESSARY.

POTABLE WATER IN THE SECONDARY DEWATERING BUILDING IS SUPPLIED BY THE VILLAGE OF STRATTON. THE BUILDING WAS BUILT 2008-2010 SO NO LEAD SOLDER OR PIPES ARE PRESENT BASED ON THE SPECIFICATIONS FOR THE BUILDING.





LEGEND

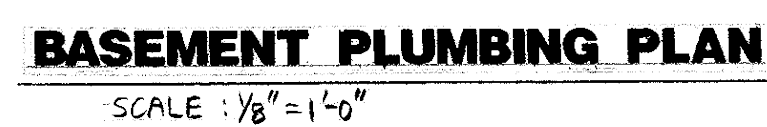
- WC WATER COOLER
- EW EYE WASH
- SS SAFETY SHOWER

W.H. SAMMIS PLANT
29503 State Route 7
Stratton, OH 43961
Phone: 740-537-1546
Main Plant Building
Built Prior to 1986
No known lead service lines, but no documentation.
Lead solder probable, but no documentation.

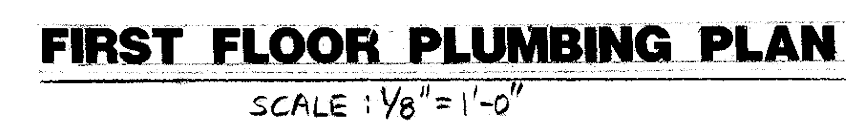
G1097, SH. 6 SOUTH DOMESTIC WATER SUPPLY SYSTEM		G1097, SH. 5 DOMESTIC WATER SUPPLY HEADER - SOUTH		G1097, SH. 4 DOMESTIC WATER SUPPLY HEADER - NORTH		G1097, SH. 2 DOMESTIC WATER PIPING - SERVICE TUNNEL TO OFFICE		G1097, SH. 1 DOMESTIC WATER PIPING - WELL, YARD & TUNNEL PIPING	
DWG NO.	REFERENCE DWG.	DWG NO.	REFERENCE DWG.	DWG NO.	REFERENCE DWG.	DWG NO.	REFERENCE DWG.	DWG NO.	REFERENCE DWG.
FORM 159 (REV. 12-86) NO. 590-231-8									

DIV. GENERAL OFFICE		DEPT. GENERATING		PLANT ENGR.		SCALE		JOB NO.	
DR. M.H.U.		DATE 11-18-87		CHK. J.C.B.		DATE 11/24/87		W.H. SAMMIS PLANT	
INSPECTION		DATE 4/1/88		APP. V.E.T.		DATE 4/1/88		O-ST-780-G1002-9-3	

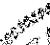
PIPING & INSTRUMENT DIAGRAM		DOMESTIC WATER SYSTEM		UNITS 1-7	
W.H. SAMMIS PLANT		EAR SA-33		A	



SHUT-OFF VALVE
FOR SPR. LINE
VALVE INSIDE &
STEM OUTSIDE




SEE ARCHITECTURAL DETAILS FOR EXACT
LOCATIONS AND DIMENSIONS OF EQUIP-
MENT, FIXTURES, OPENINGS AND OUTLETS




E. M. S.
PLUMBING: BASEMENT AND 1ST FLOOR PLANS


Raymond J. Jaminet & Partners
Architects

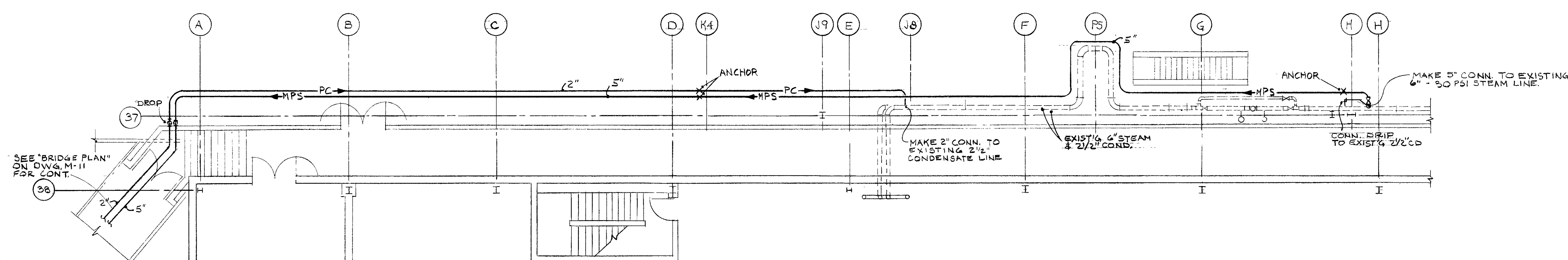


• 216 • 744-8981
29 East Front Street
Youngstown, Ohio 44503

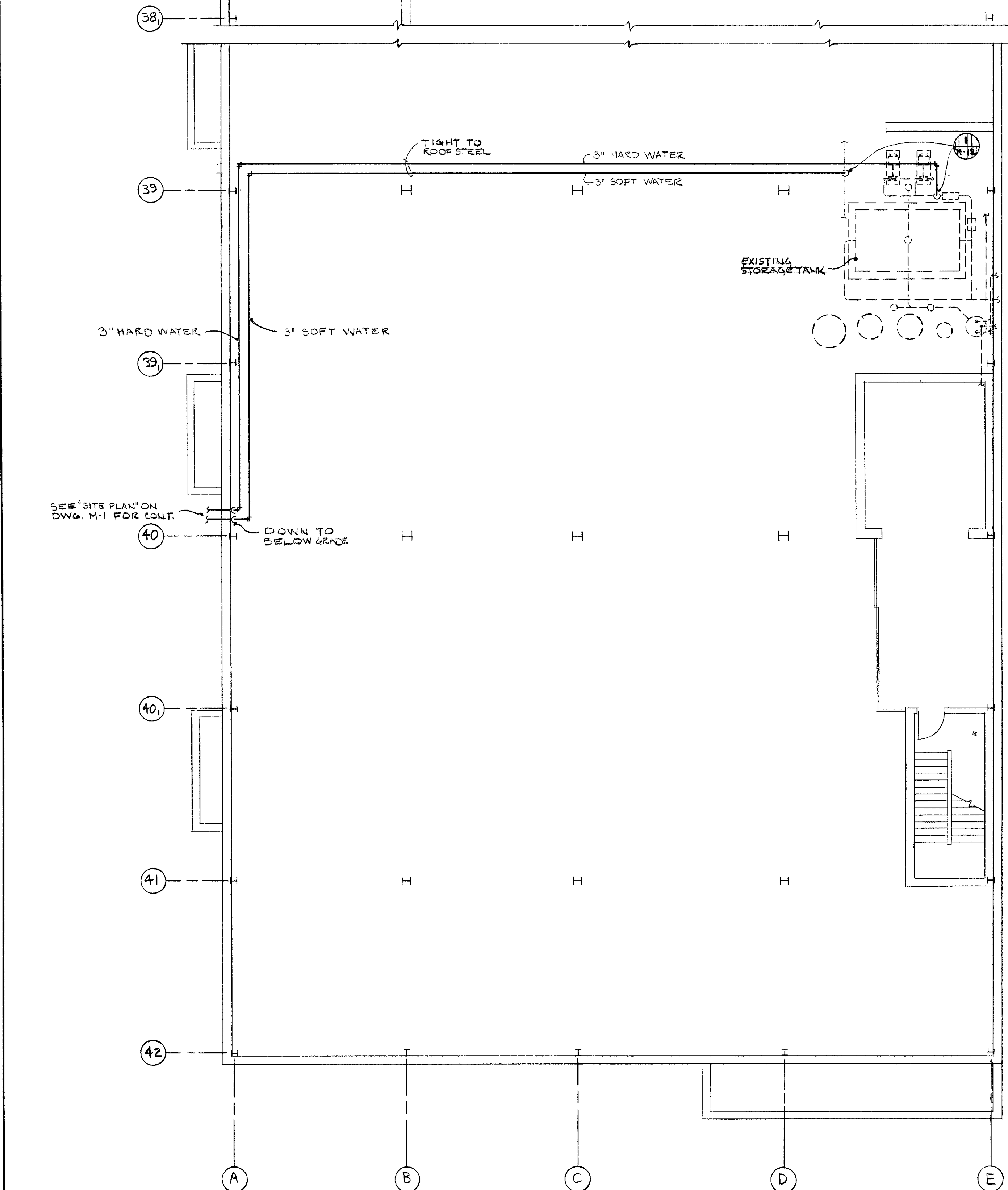


**W.H. SAMMIS GENERATING PLANT
SOUTH OFFICE BUILDING
PHASE II**

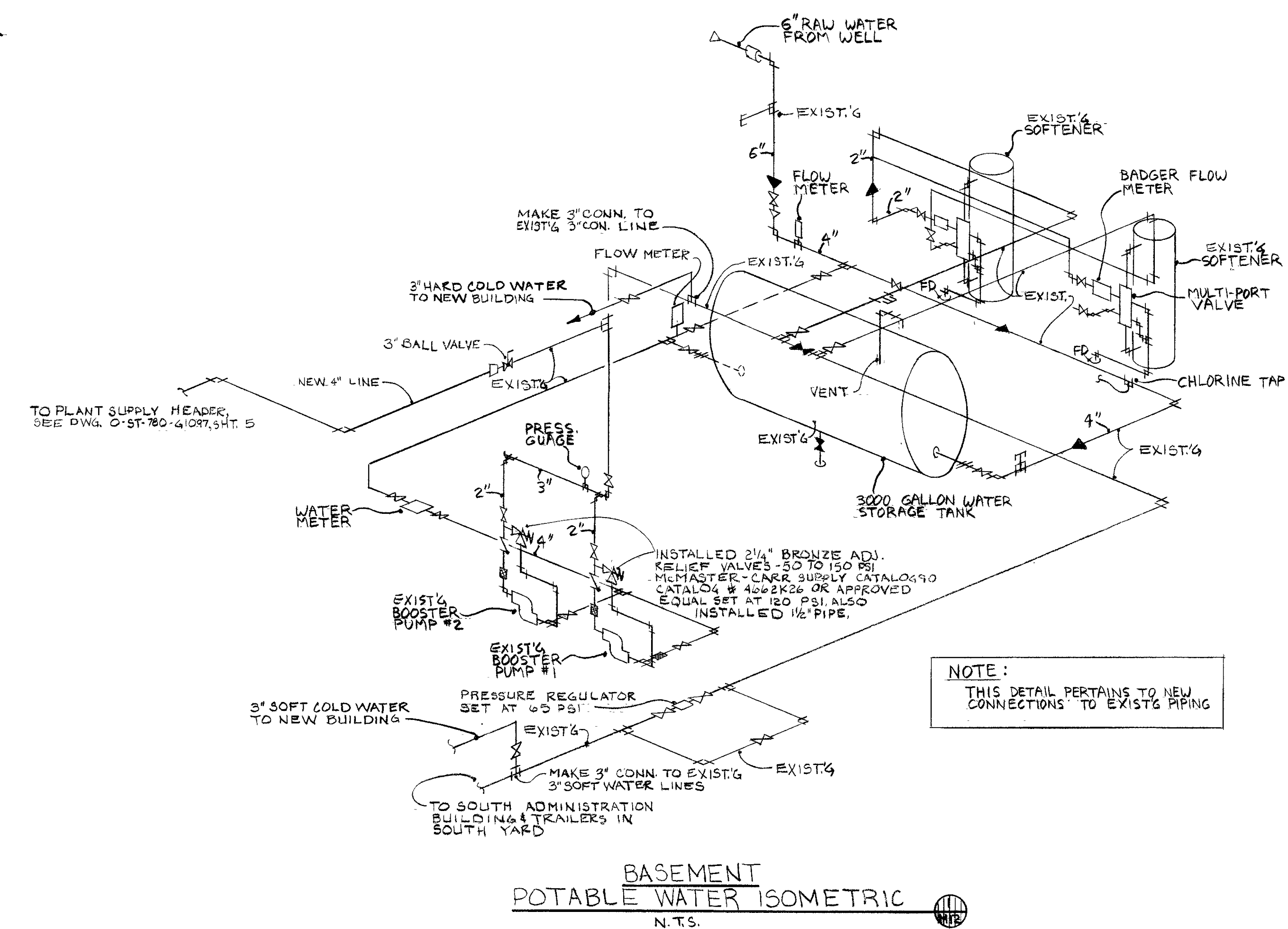
 OHIO EDISON <hr/> AKRON, OHIO	DWG. NO.	0-ST-780-G3094	SHEET	REV.
			M3	



PARTIAL SECOND FLOOR PLAN
SCALE: $\frac{1}{8}" = 1'-0"$



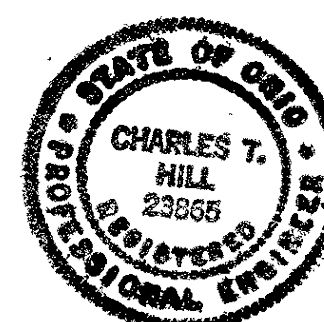
PARTIAL BASEMENT FLOOR PLAN
SCALE: $\frac{1}{8}" = 1'-0"$



NOTE:
THIS DETAIL PERTAINS TO NEW
CONNECTIONS TO EXIST'G PIPING

BASEMENT
POTABLE WATER ISOMETRIC
N.T.S.

W.H SAMMIS PLANT
29503 State Route 7
Stratton, OH 43961
Phone: 740-537-1546
Employee Facilities Building
Built after 1986
No known lead service lines, but no documentation.
Lead solder probable, but no documentation.
PWS OH4136412



Raymond J. Jaminet & Partners
Architects



• 216 • 744-8981
29 East Front Street
Youngstown, Ohio 44503

**W.H. SAMMIS GENERATING PLANT
EMPLOYEE FACILITIES BUILDING** M12
PLMBG. & HTG. SERVICE CONNECTIONS

SEE ARCHITECTURAL DETAILS FOR EXACT
LOCATIONS AND DIMENSIONS OF EQUIP-
MENT, FIXTURES, OPERATIONS AND DISPLACEMENT.

[illegible]