

Village of Grafton, Ohio

Lorain County

PWS#: OH4700511

PWS Name: Grafton Village PWS

NARRATIVE for 2017 LEAD MAPPING

Distribution System Mains: After review of the Village distribution system existing mapping, as-built prints, and various other records available to current Village personnel, as well as past operational efforts revealing mainline construction materials, the Village believes 2 active water mains containing molten leaded joints exist within the water distribution system, one along Oak Street and the other along Chestnut Street.

Service Line Material: The Village has limited tap records for individual service lines with some of the records detailing service line materials. The Village estimates tap records are available for approximately 50% of existing service connections. It is believed that the majority of service lines in the village are copper up to the public R/W with copper or galvanized service lines continuing to the structure being serviced. Of the tap records available the Village has identified 55 residential properties where lead service laterals most likely exist from the water main to the curb stop which is typically located at the street right-of-way line. A listing of the residential property addresses is included herewith and these parcels have also been identified on the Distribution System Map.

Buildings served by PWS likely to contain lead solder, plumbing or fixtures: The map submitted details by parcel, homes and buildings built within the specified time frames. Residential structures built within the timeframes determined to have the potential of lead solder, plumbing or fixtures beyond the service lateral are detailed based on structure age information obtained from the Lorain County Auditors office. Commercial/industrial/institutional structure age is mapped based on local recollection of time of construction and/or review of available site plan records.

Description of areas of the PWSD where susceptible buildings are located: Buildings that may or may not have lead solder, fixtures or plumbing are located throughout most of the service area of the Village.

History of Lead Sampling: Review of historical data shows that the Village has been below the Action level for lead and copper sampling over the past several years.

Lead and Copper Sample Sites: A listing of Tier 1 sample sites with addresses and contact information is attached and these sites have also been identified on the Distribution

Village of Grafton, Water Distribution System Known
Lead services:

1.	1004	MAIN ST (North Side)
2.	1032	MAIN ST
3.	1036	MAIN ST
4.	1040	MAIN ST
5.	1048	MAIN ST
6.	1116	MAIN ST

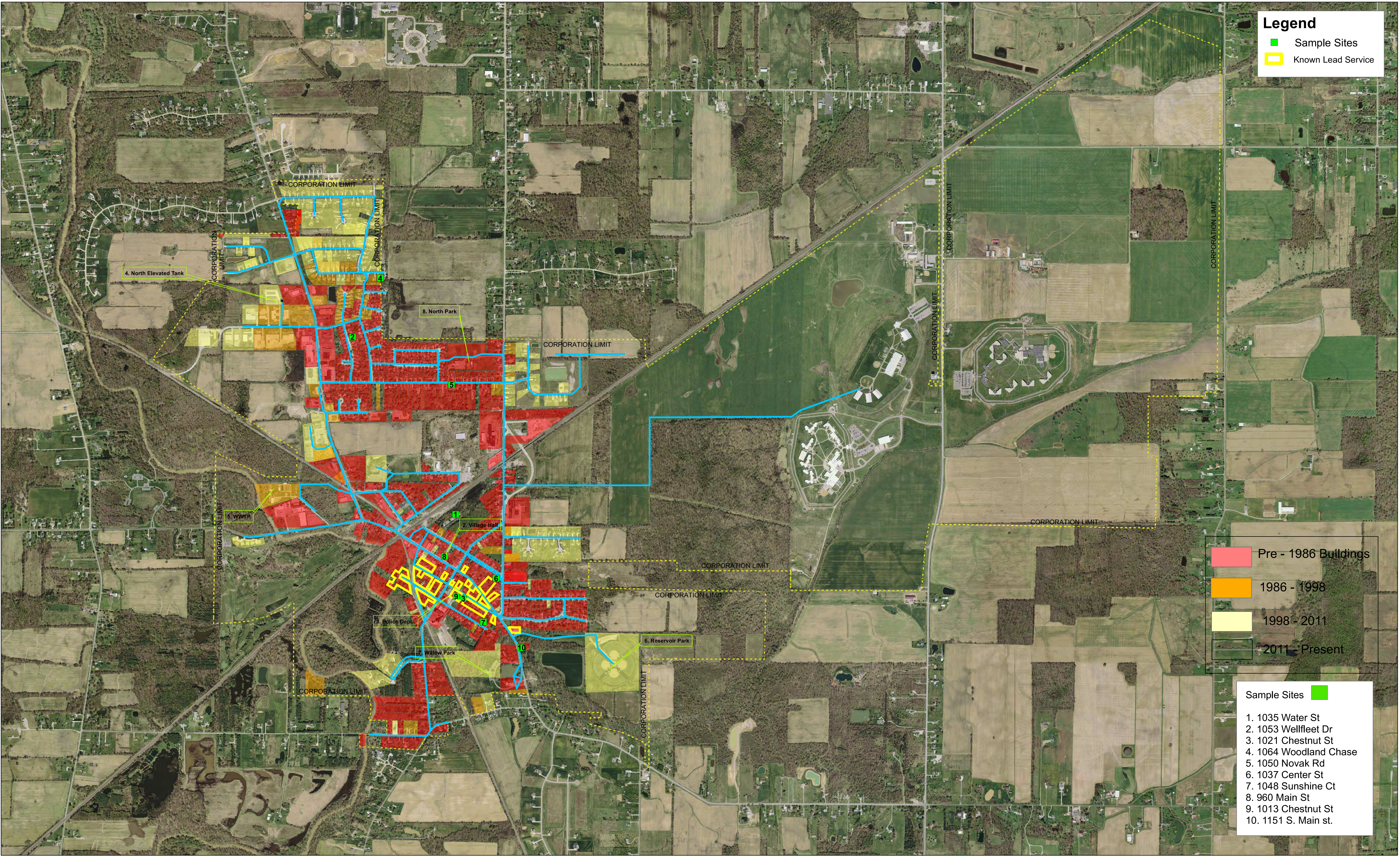
7.	1021	MAIN ST (South Side)
8.	1029	MAIN ST
9.	1033	MAIN ST
10.	1041	MAIN ST
11.	1043	MAIN ST
12.	1045	MAIN ST

13.	966	CHESTNUT ST (North Side)
14.	970	CHESTNUT ST
15.	974	CHESTNUT ST
16.	978	CHESTNUT ST
17.	994	CHESTNUT ST
18.	1000	CHESTNUT ST
19.	1008	CHESTNUT ST
20.	1024	CHESTNUT ST
21.	1026	CHESTNUT ST

22.	963	CHESTNUT ST (South Side)
23.	967	CHESTNUT ST
24.	975	CHESTNUT ST
25.	979	CHESTNUT ST
26.	981/983	CHESTNUT ST
27.	991	CHESTNUT ST
28.	995	CHESTNUT ST
29.	1013	CHESTNUT ST
30.	1021	CHESTNUT ST
31.	1025	CHESTNUT ST
32.	1029	CHESTNUT ST
33.	1033	CHESTNUT ST
34.	1037	CHESTNUT ST
35.	1041	CHESTNUT ST
36.	1045	CHESTNUT ST
37.	1049	CHESTNUT ST
38.	1051	CHESTNUT ST
39.	1061	CHESTNUT ST

40.	960	OAK ST
41.	970	OAK ST
42.	974	OAK ST
43.	978	OAK ST
44.	990	OAK ST
45.	994	OAK ST

46.	945	OAK ST
47.	949	OAK ST
48.	953	OAK ST
49.	959	OAK ST
50.	963	OAK ST
51.	979	OAK ST
52.	983	OAK ST
53.	987	OAK ST
54.	991	OAK ST
55.	999	OAK ST



Legend

- Sample Sites
- Known Lead Service

Pre - 1986 Buildings

1986 - 1998

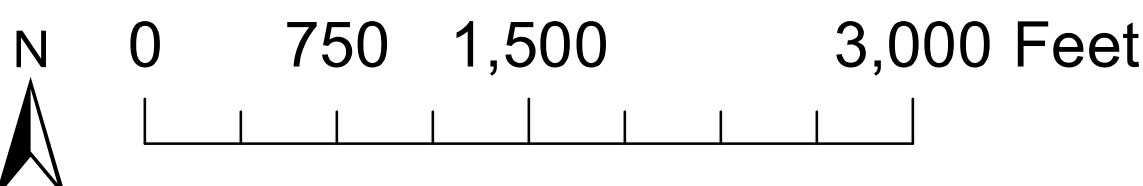
1998 - 2011

2011 - Present

Sample Sites

- 1. 1035 Water St
- 2. 1053 Wellfleet Dr
- 3. 1021 Chestnut St
- 4. 1064 Woodland Chase
- 5. 1050 Novak Rd
- 6. 1037 Center St
- 7. 1048 Sunshine Ct
- 8. 960 Main St
- 9. 1013 Chestnut St
- 10. 1151 S. Main st.

"Disclaimer: Structure Age shown is from data provided by the County."



Village of Grafton Distribution System
Lead & Copper Mapping HB - 512
PWS # OH4700511
PWS Name: Grafton Village PWS

