

SITALOM UMC.
FAMILY LIFE CENTER

CONNECTOR
TO
CHURCH

WAS CONSTRUCTED 2006

GYM

ENTRANCE

KITCHEN

LIBRARY

CLASSROOM

CLASS ROOMS

PRESSURE TANK GREEN SAND HOT WATER TANK

COPPER PIPE FROM HERE

MAINTENANCE ROOM

MENS R.R.

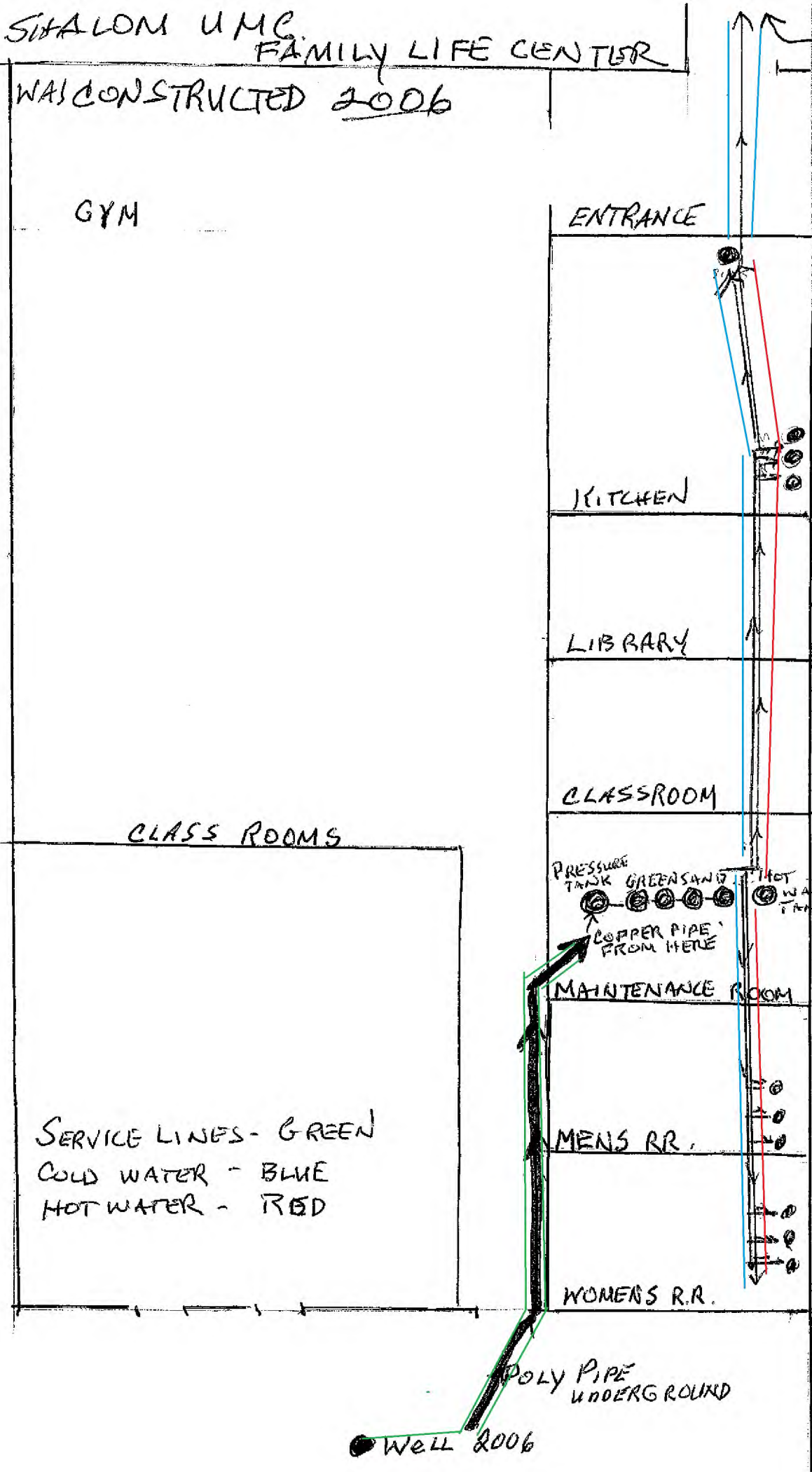
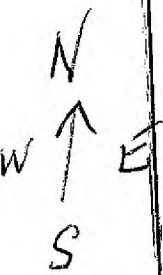
WOMENS R.R.

STATE RT. 33

SERVICE LINES - GREEN
COLD WATER - BLUE
HOT WATER - RED

POLY PIPE UNDERGROUND

Well 2006



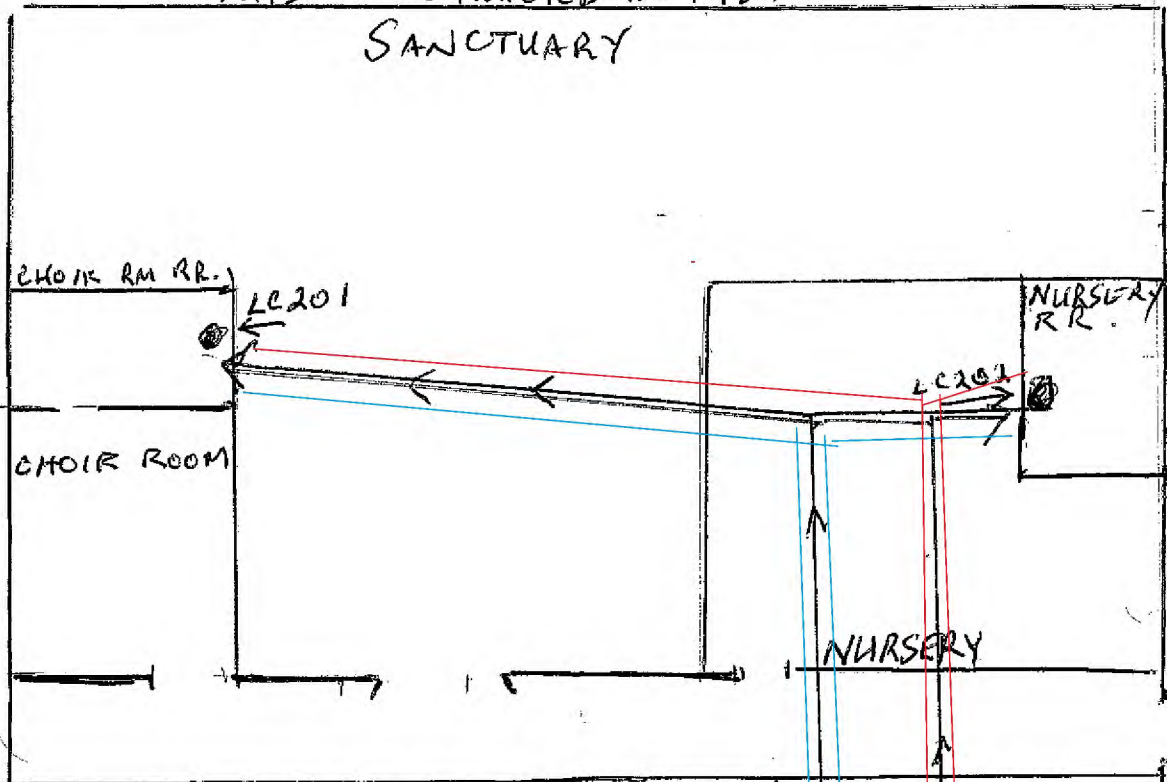
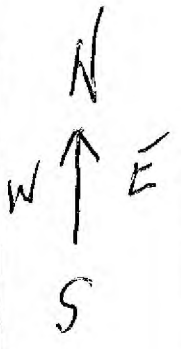
10 CARRULL, OH. PLUM. RD.

4925 PLUM RD,
CARROLL OH 43112
OH 234 8012
740-756-4855

SHALOM UNITED METHODIST CHURCH

WAS CONSTRUCTED IN 1987

BUILT
1987

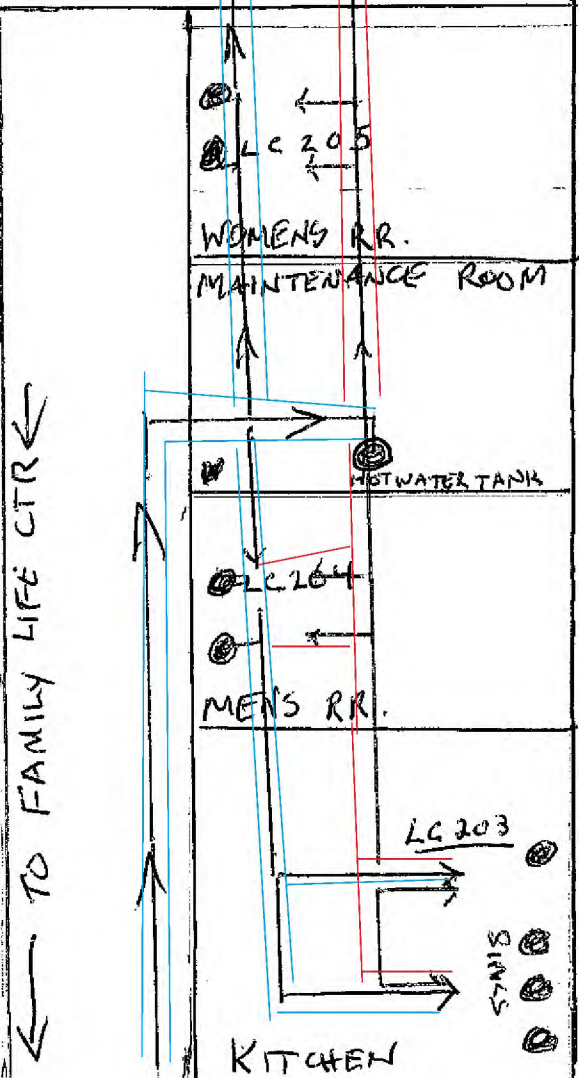


CLASS ROOMS & OFFICES

SERVICE LINE - POLY
INTERIOR LINES - ALL
1986-2014 COPPER

SERVICE LINES - GREEN
COLD WATER - BLUE
HOT WATER - RED

- SAMPLE SITES -
- LC201 CHAIR ROOM
 - LC202 NURSERY
 - LC203 KITCHEN HAND SINK
 - LC204 MENS R.R.
 - LC205 WOMENS RR.



STATE RT 33

Shalom UMC Lead Mapping

ShalomUMC, 4925 Plum Rd., Carroll, Ohio, 43112, 740-756-4855

PWS ID OH2348012

- A) Water Well (approved by EPA 28 August 2006)**
 - B) Service line to point of entry (polyethelene pipe)**
 - C) Copper pipe throughout from this point.**
 - D) Water travels through pressure tank, four greensand filter tanks then through hot water tank and is distributed throughout the Family Life Center (constructed 2006).**
 - E) Through connecting hallway to church maintenance room hot water tank & distributed throughout the church bldg. (constructed 1987).**
- All pipe & plumbing fixtures are copper with solder (1986-2014)**
- No lead lines. No lead violations on file.**

Submitted by Gary Collins (WSA-1112015)