

RE: LUCKEY ELEMENTARY SCHOOL
Report
Drinking Water Program
Wood County
PWS ID: OH8743112

Narrative description of Building Characteristics for Eastwood Local School District

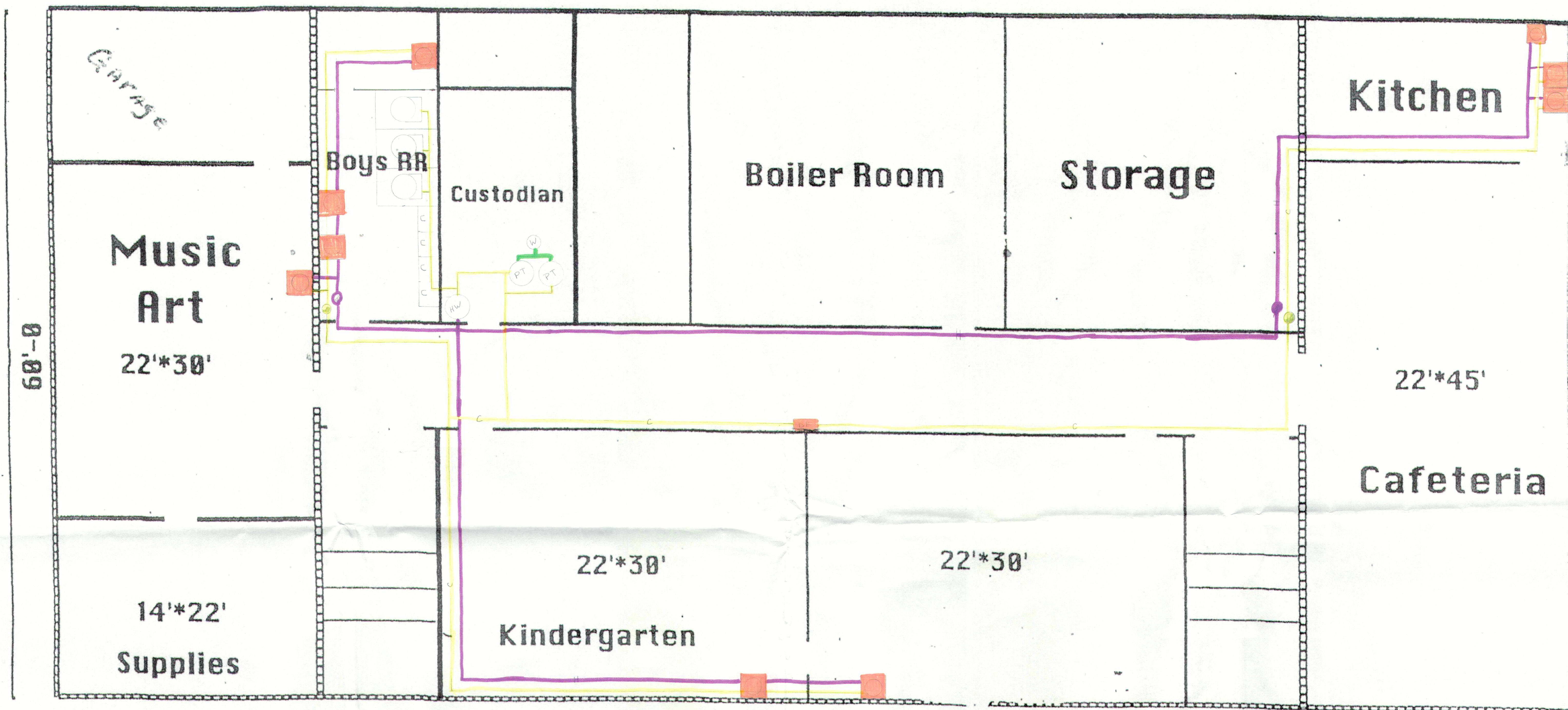
These maps were comprised of data based on the construction dates of the buildings. And those buildings built prior to 1998 or that use plumbing material or solder manufactured before 1998 may have materials with greater than 8% lead and are at a higher risk of contributing lead to the drinking water than materials manufactured after 1998. In addition, buildings built and plumbing materials manufactured after 2014 were required to have less than 0.25% lead by weight and have the lowest risk for contributing lead to the drinking water. It should be noted however that, although prohibited, some use of leaded solder or leaded components may have occurred after the prohibitions became effective.

RECEIVED

MAR 08 2017

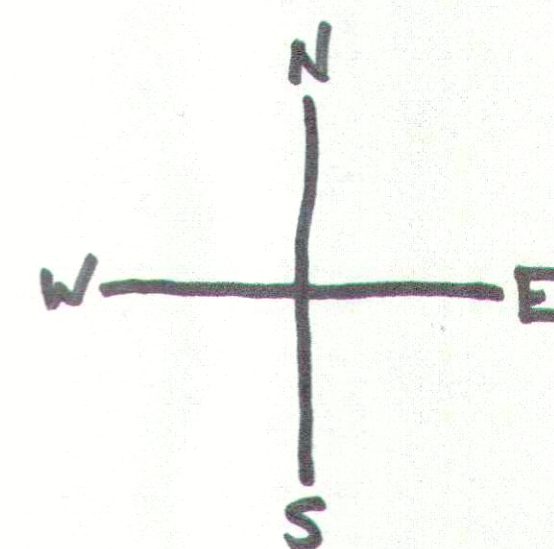
OHIO E.P.A.
N.W.D.O.

OH 8743112
Lucky
Elementary



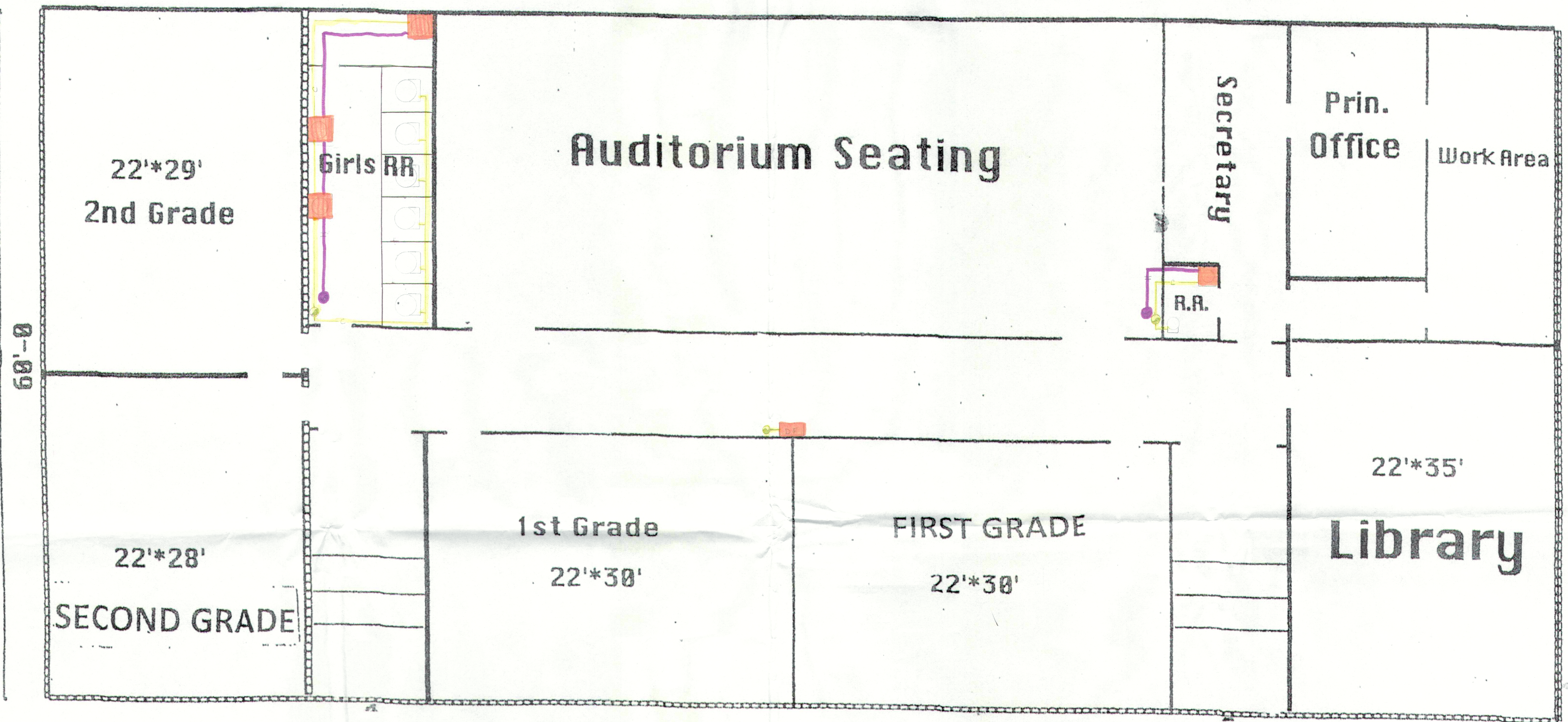
Lead Mapping Luckey Elementary
 Id# 8759970
Luckey Base Floor
 524 Krotzer Ave Luckey, OH
 419-833-2821

132'-0



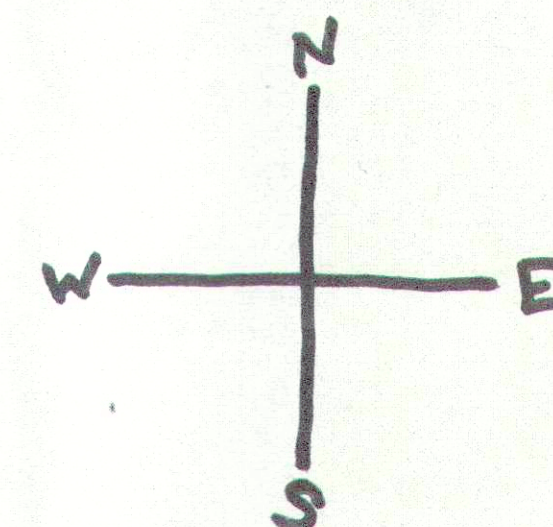
- cold water plumbing (potential for lead based fittings) galvanized piping
- hot water plumbing (potential for lead based fittings) galvanized piping
- sinks/drinking fountains with potential for lead within fixture
- non lead PVC
- PT - pressure tank
- W - well
- HW - Hot water heater
- sink
- DF - drinking fountain

Krotzer Ave



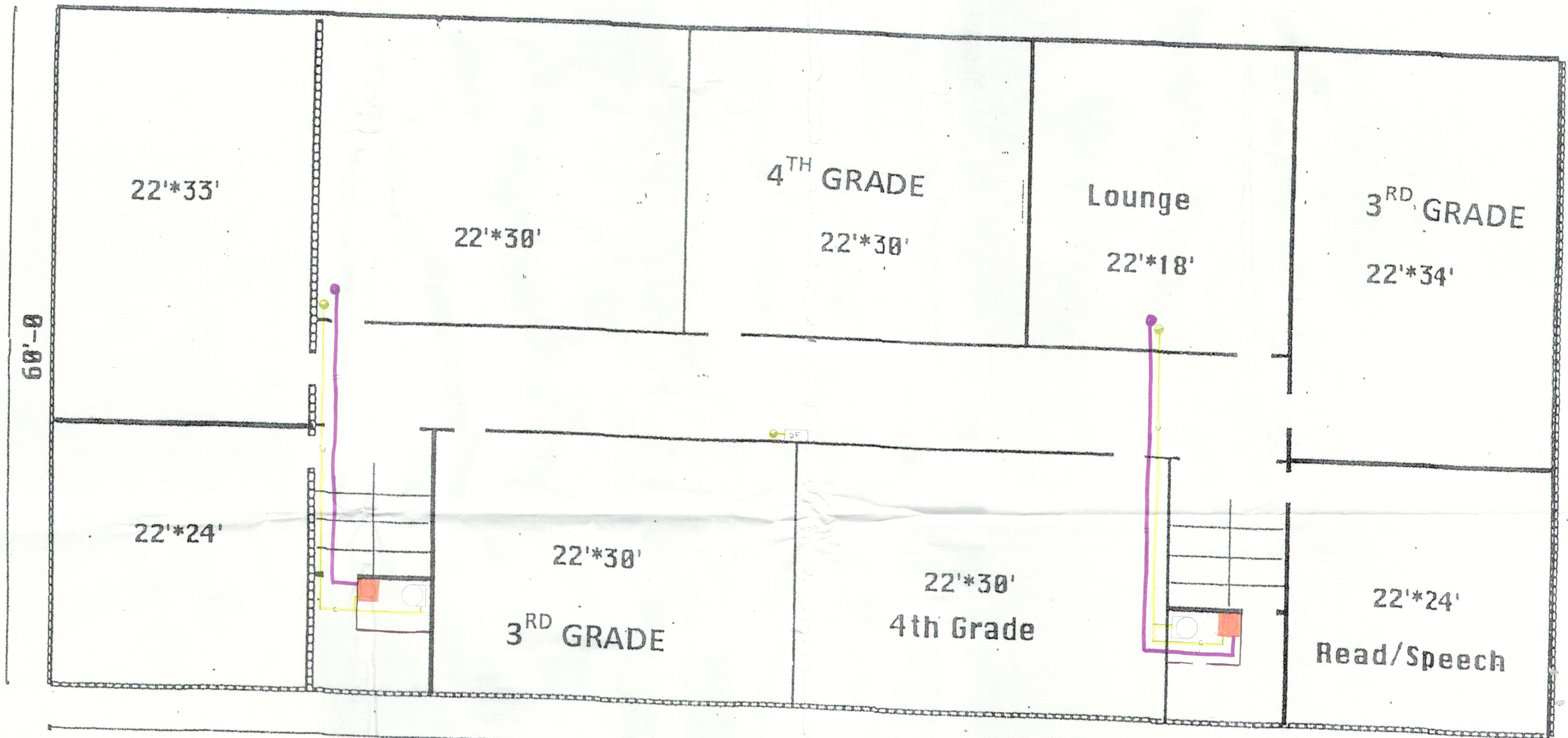
Lead Mapping Luckey Elementary
 Id# 8759970
Luckey 1st Floor
 524 Krotzer Ave, Luckey, OH
 419-833-2821

132'-0

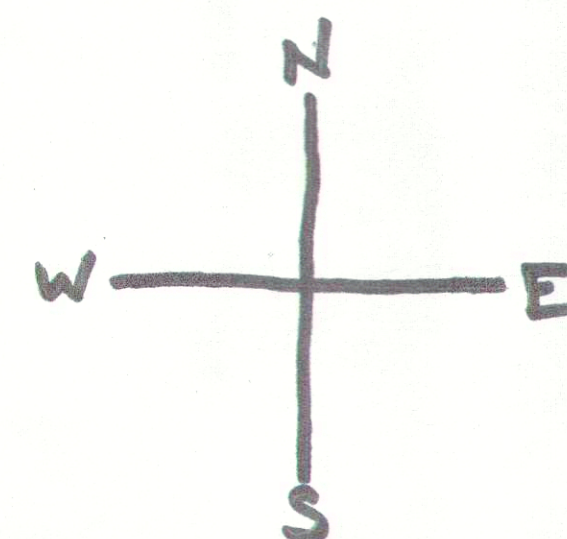


- cold water plumbing (potential for lead based fittings) galvanized piping
- hot water plumbing (potential for lead based fittings) galvanized piping
- sinks/ drinking fountains with potential for lead within fixture
- non lead PVC
- PT - pressure tank
- W - well
- HW - hot water heater
- sink
- DF - drinking fountain

Krotzer Ave



Lead mapping Lucky Elementary
Id# 8759970
Lucky 2nd Floor
524 Krotzer Ave, Lucky, OH
419-833-2821



- Cold water plumbing (potential for lead based fittings) galvanized piping
- hot water plumbing (potential for lead based fittings) galvanized piping
- sinks/drinking fountains with potential for lead within fixture
- non lead PVC
- PT - pressure tank
- W - well
- HW - hot water heater
- sink
- DF - drinking fountain

Krotzer Ave