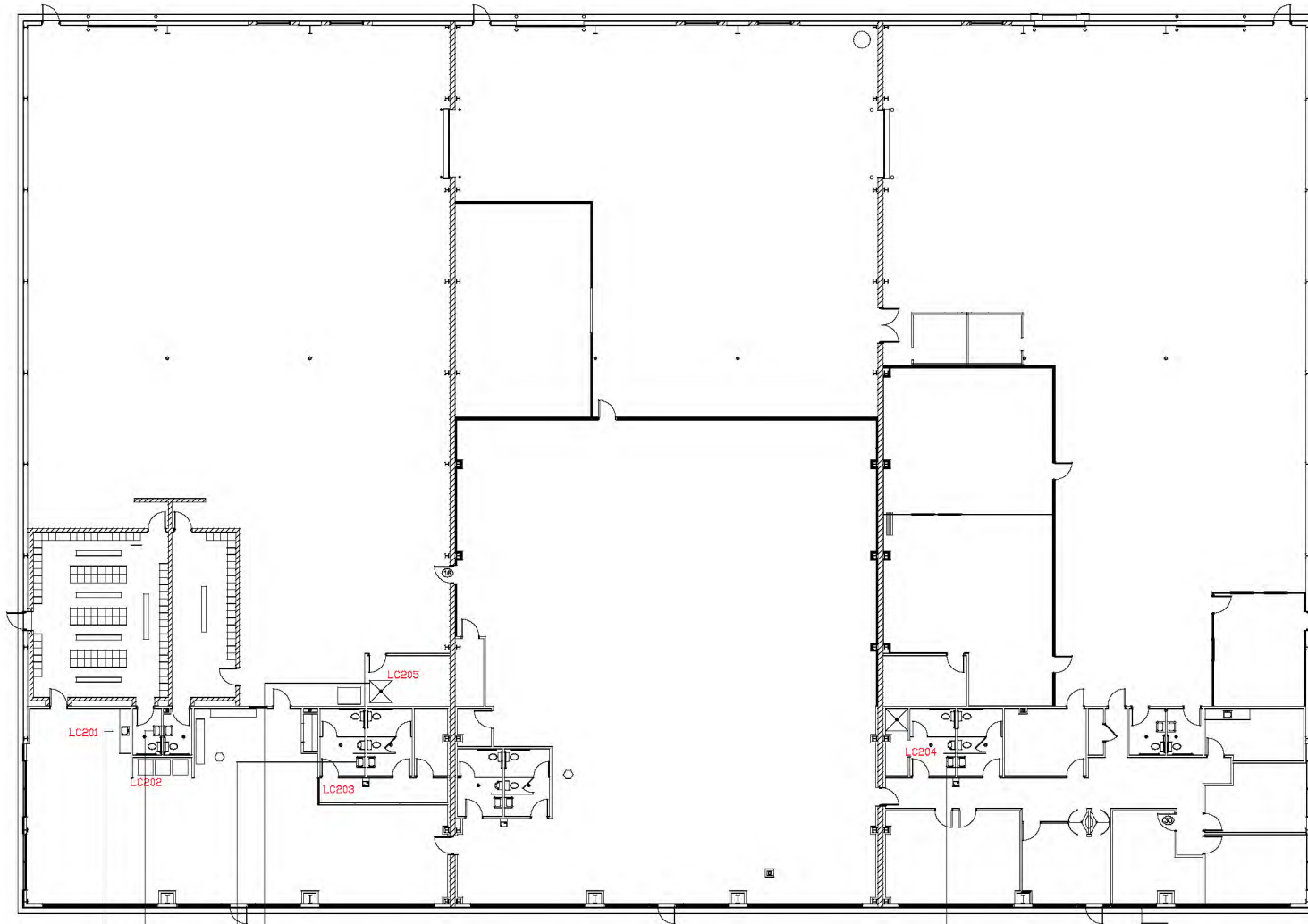


2G BUILDING 2001

PLUMBING MATERIALS USED AT MIDWEST EXPRESS, INCORPORATED  
 FIT THE TIME PERIOD BETWEEN 1986-2014, WHEN LEAD SOLDER  
 WAS BANNED AND THERE WAS LOWER CONTENT OF LEAD IN BRASS

2G



PWS NAME	SMP ID	TAP LOCATION
2G WELL	LC201	2G CAFE SINK
	LC202	2G LOCKER ROOM SINK
	LC203	2G CAFE MEN'S RR SINK
	LC204	2G OFFICE MEN'S RR SINK 1
	LC205	2G JANITORS CLOSET

Midwest Express, Inc.  
Engineering Division  
Franklin County Plant  
11000 E. 12th  
Franklin County, OH 43019  
A member of The United Logistics North America

BUILDING 2G

Cu/Pb

PWS TAP LOCATION

SKETCH12-15 C