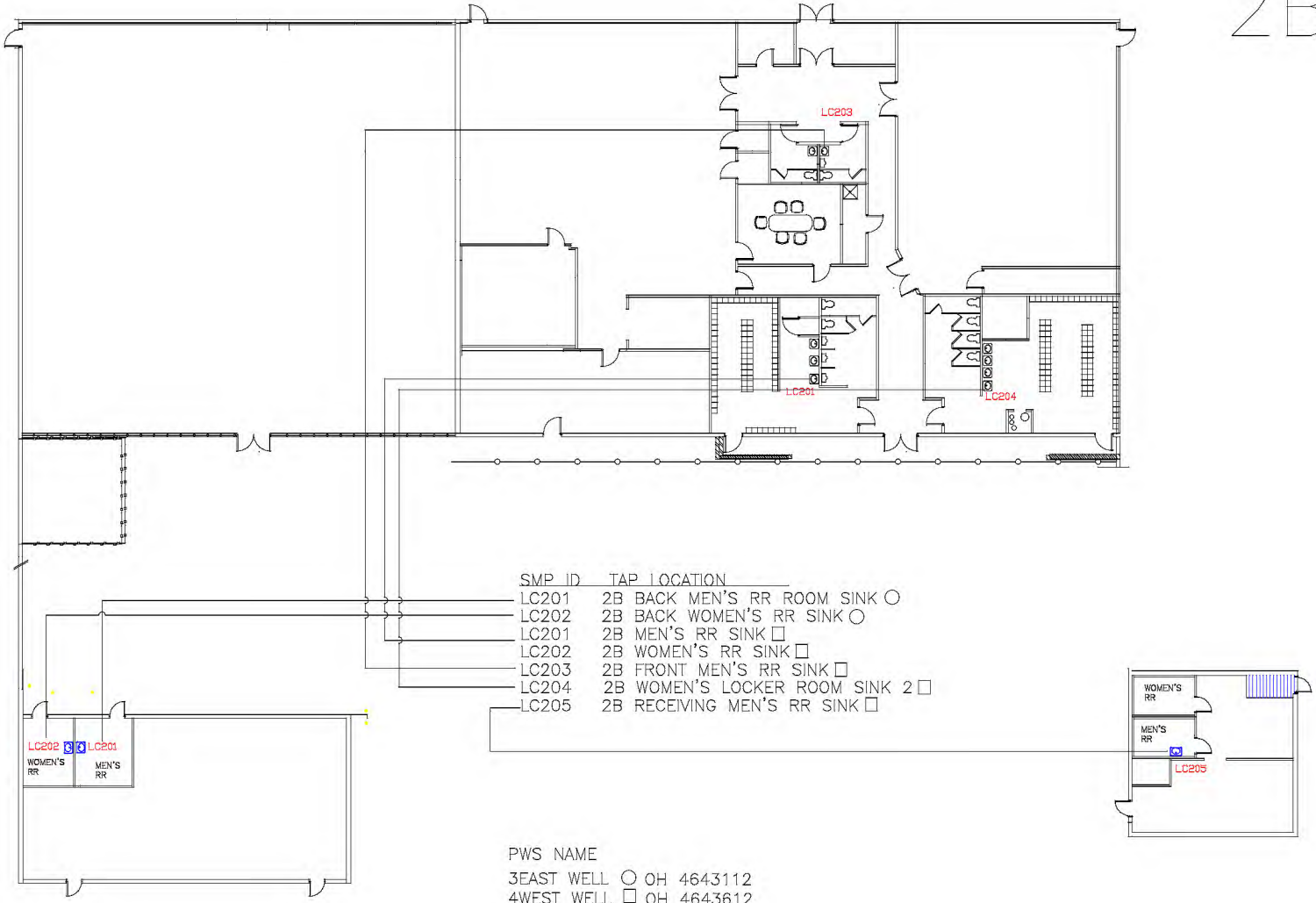


2B



SMP_ID	TAP LOCATION
LC201	2B BACK MEN'S RR ROOM SINK ○
LC202	2B BACK WOMEN'S RR SINK ○
LC201	2B MEN'S RR SINK □
LC202	2B WOMEN'S RR SINK □
LC203	2B FRONT MEN'S RR SINK □
LC204	2B WOMEN'S LOCKER ROOM SINK 2 □
LC205	2B RECEIVING MEN'S RR SINK □

PWS NAME
 3EAST WELL ○ OH 4643112
 4WEST WELL □ OH 4643612

2B BUILDING 1989
 PLUMBING MATERIALS USED AT MIDWEST EXPRESS, INCORPORATED
 FIT THE TIME PERIOD BETWEEN 1986-2014, WHEN LEAD SOLDER
 WAS BANNED AND THERE WAS LOWER CONTENT OF LEAD IN BRASS

Midwest Express, Inc.
 Engineering Division
 11300 E. 12th Ave.
 Denver, CO 80231
 A member of the MidWest Logistics North America

BUILDING 2B

Cu/Pb

PWS TAP LOCATION

SKETCH12-15 C