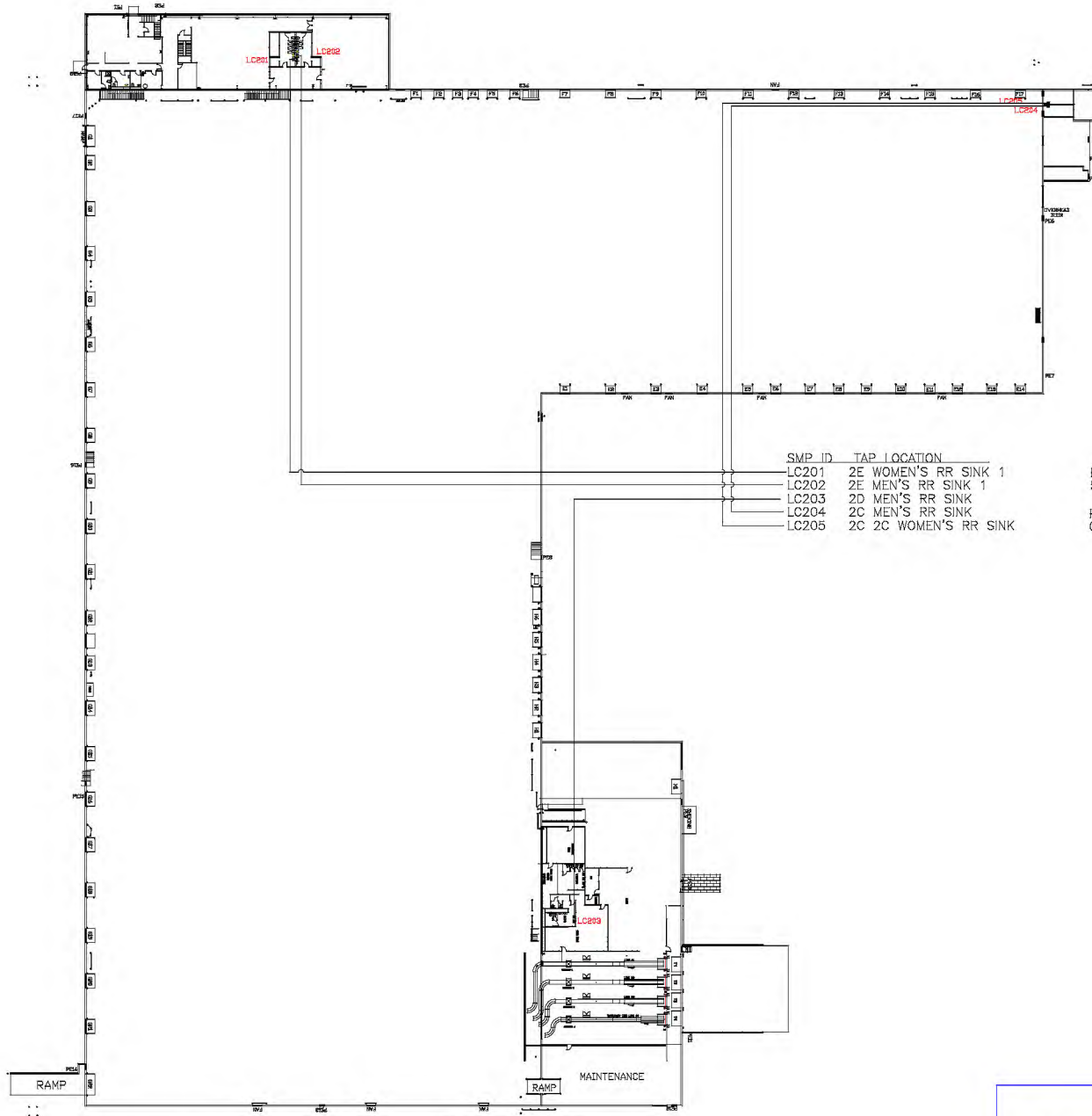


2CDE



| SMP ID | TAP LOCATION |
|--------|-----------------------|
| LC201 | 2E WOMEN'S RR SINK 1 |
| LC202 | 2E MEN'S RR SINK 1 |
| LC203 | 2D MEN'S RR SINK |
| LC204 | 2C MEN'S RR SINK |
| LC205 | 2C 2C WOMEN'S RR SINK |

PWS NAME
5&6 WELL

PWS ID
OH 4644212

2CDE BUILDING 1997
 PLUMBING MATERIALS USED AT MIDWEST EXPRESS, INCORPORATED
 FIT THE TIME PERIOD BETWEEN 1986-2014, WHEN LEAD SOLDER
 WAS BANNED AND THERE WAS LOWER CONTENT OF LEAD IN BRASS



Midwest Express, Inc.
 Engineering Division
 11500 E. 12th Ave.
 Suite 200, Denver, CO 80231
 a subsidiary of Fluor Logistics North America

BUILDING 2CDE
Cu/Pb
PWS TAP LOCATION
SKETCH12-15 C