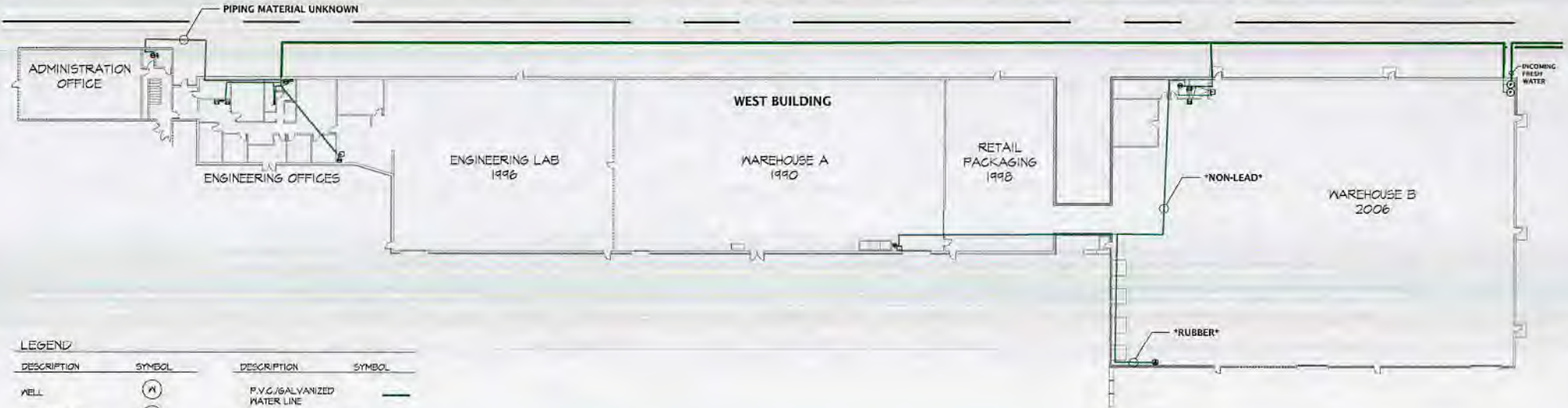


RE: TRUFAST ORGANIZATION
Report
Drinking Water Program
Williams County
PWS ID: OH8641812

RECEIVED
 MAR 08 2017
 DDAGW - NWDO



LEGEND

DESCRIPTION	SYMBOL	DESCRIPTION	SYMBOL
WELL	(W)	P.V.C./GALVANIZED WATER LINE	(Green line)
PRESSURE TANK	(P)	UNKNOWN WATER LINE	(Black line)
HOT WATER HEATER	(HW)	* WATERLINE LAYOUT AND DISTRIBUTION INFORMATION IS BASED OFF DISTRIBUTION SYSTEM MAINTENANCE RECORDS (WATERLINE BREAK RECORDS)	
SINK	(S)	NOTE: FIXTURES LISTED ABOVE ARE PROBABLE OR UNKNOWN TO CONTAIN LEAD	
VANITY	(V)		
DRINKING FOUNTAIN	(DF)		
EYE WASH STATION	(EWS)		
		0' 10' 20' 40'	NORTH

MARCH 7, 2017

Altenloh, Brink & CO.
 02105 County Road 12-C, Bryan, OH 43506
 Tel: (419) 636-6715

E.P.A. Lead Pipe Infrastructure Mapping

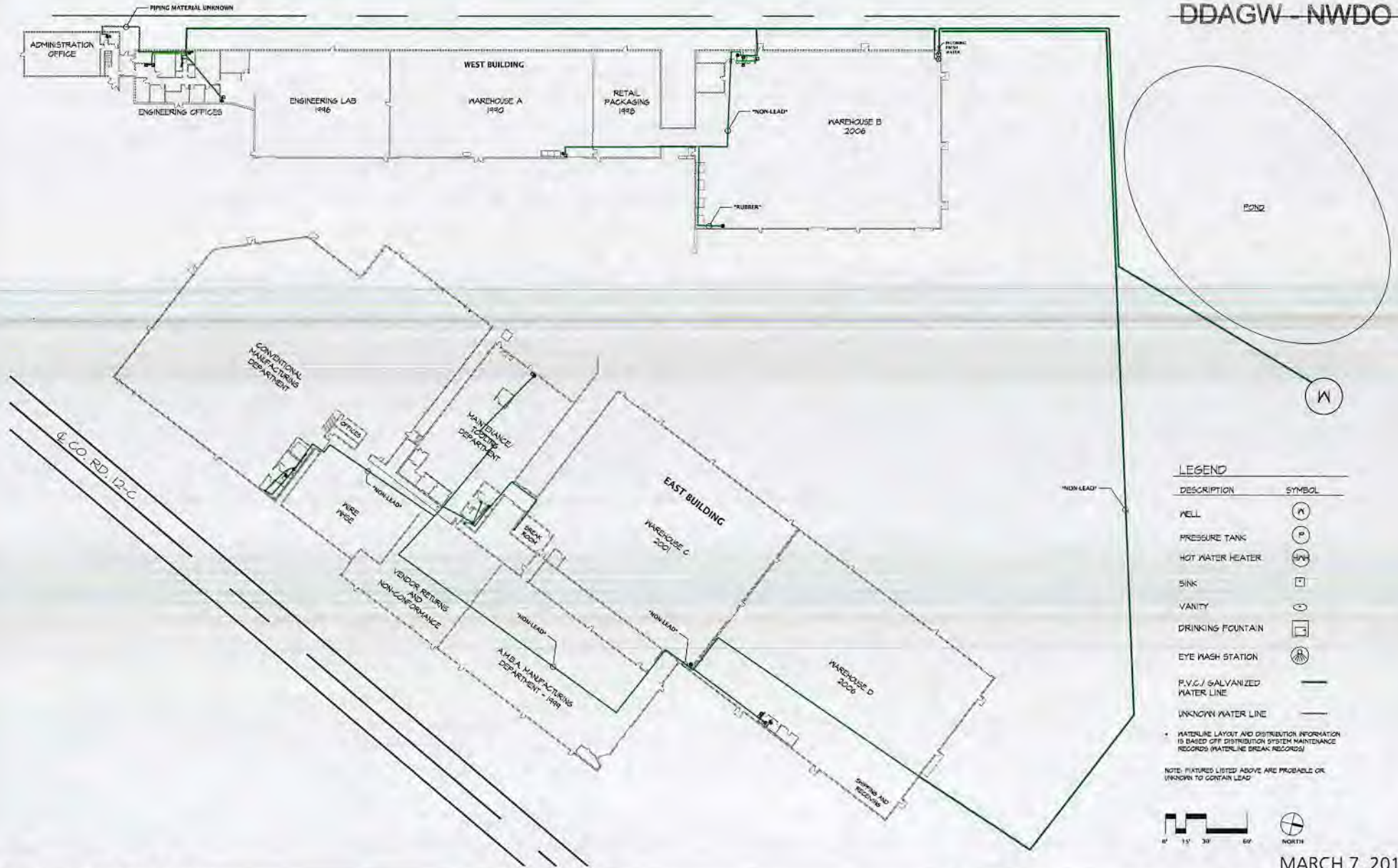
Tru fast
 OH 8641812



RECEIVED

MAR 08 2017

DDAGW-NWDO



LEGEND

DESCRIPTION	SYMBOL
WELL	(W)
PRESSURE TANK	(P)
HOT WATER HEATER	(HW)
SINK	(S)
VANITY	(V)
DRINKING FOUNTAIN	(DF)
EYE WASH STATION	(EWS)
P.V.C./ GALVANIZED WATER LINE	(—)
UNKNOWN WATER LINE	(---)

* WATERLINE LAYOUT AND DISTRIBUTION INFORMATION IS BASED OFF DISTRIBUTION SYSTEM MAINTENANCE RECORDS (WATERLINE BREAK RECORDS)

NOTE: FEATURES LISTED ABOVE ARE PROBABLY OR UNKNOWN TO CONTAIN LEAD



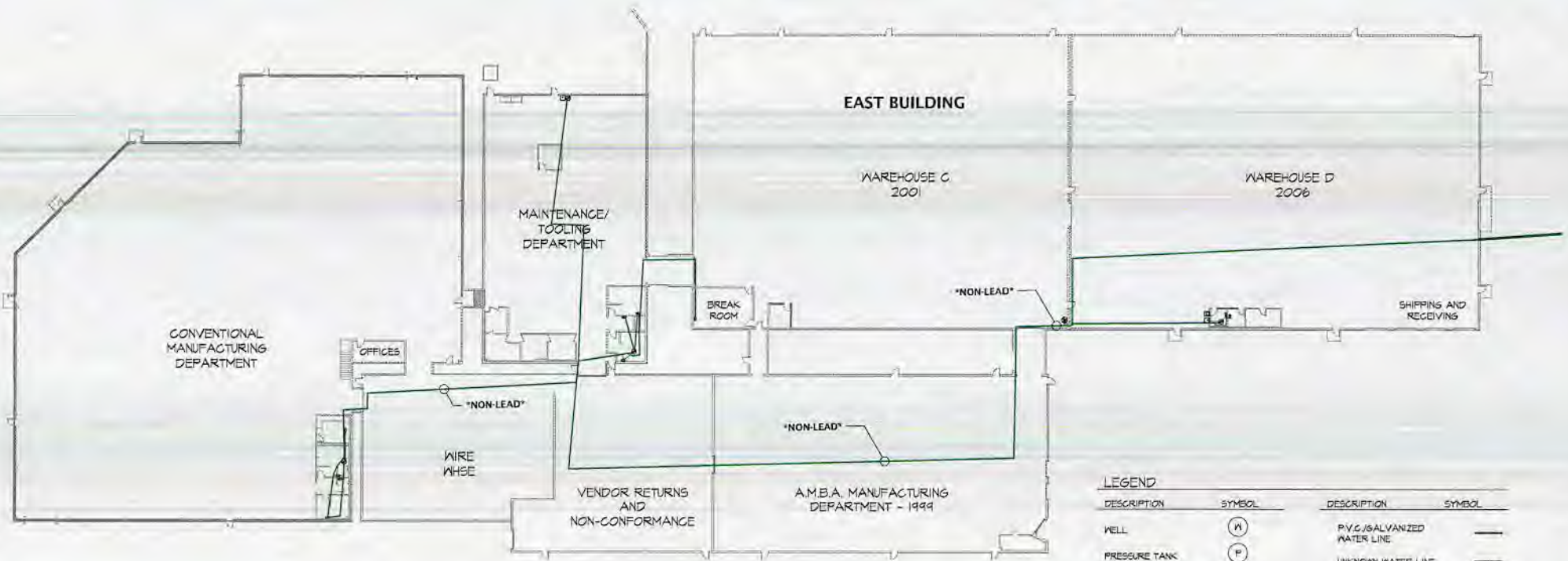
MARCH 7, 2017



RECEIVED

MAR 08 2017

DDAGW - NWDO



LEGEND

DESCRIPTION	SYMBOL	DESCRIPTION	SYMBOL
WELL	(W)	P.V.C./GALVANIZED WATER LINE	—
PRESSURE TANK	(P)	UNKNOWN WATER LINE	—
HOT WATER HEATER	(HW)		
SINK	(S)		
VANITY	(V)		
DRINKING FOUNTAIN	(DF)		
EYE WASH STATION	(EWS)		

* WATERLINE LAYOUT AND DISTRIBUTION INFORMATION IS BASED OFF DISTRIBUTION SYSTEM MAINTENANCE RECORDS (WATERLINE BREAK RECORDS)
NOTE: FIXTURES LISTED ABOVE ARE PROBABLE OR UNKNOWN TO CONTAIN LEAD



MARCH 7, 2017

Altenloh, Brink & CO.
02105 County Road 12-C, Bryan, OH 43506
Tel: (419) 636-6715

E.P.A. Lead Pipe Infrastructure Mapping

