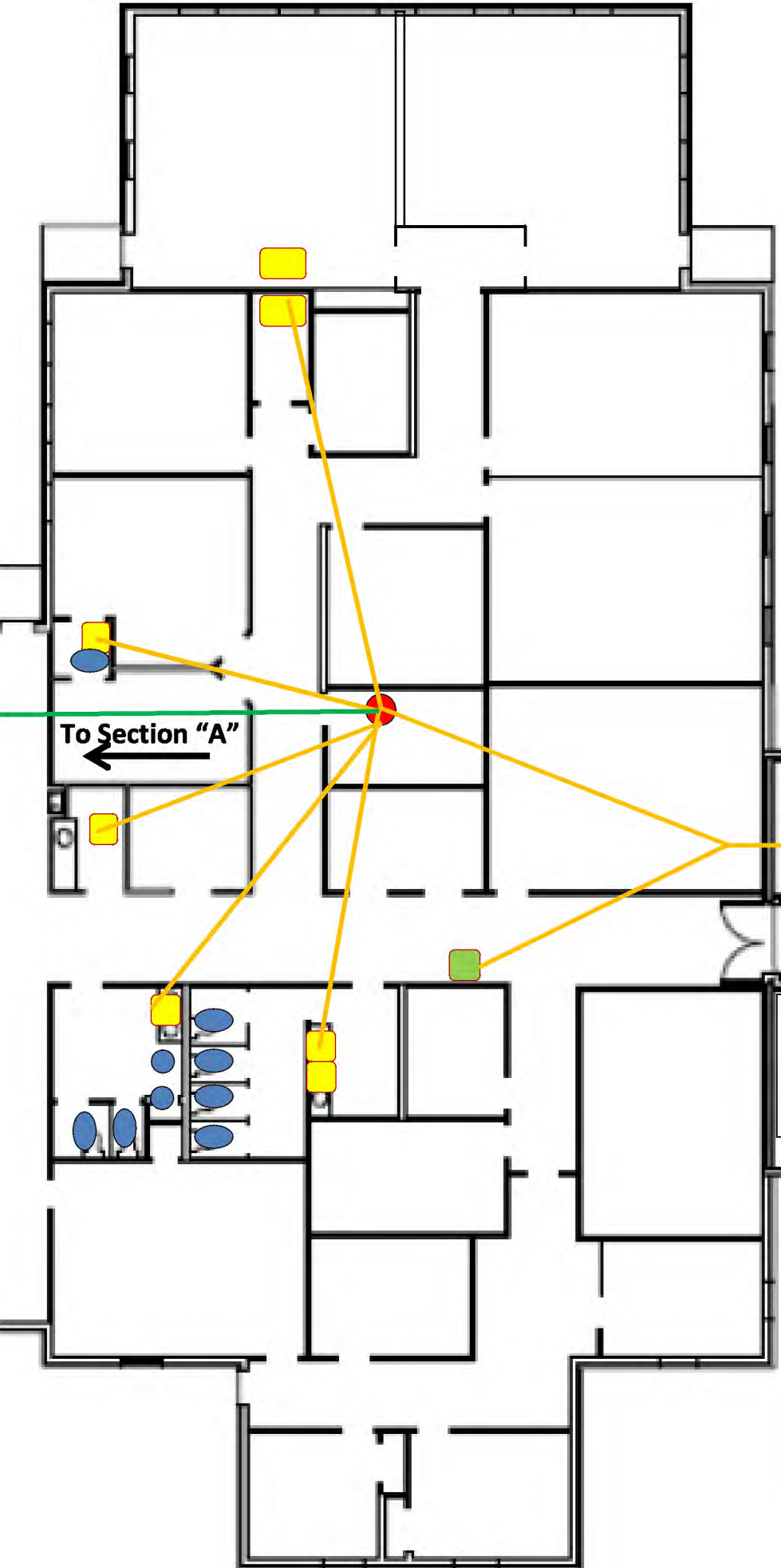


B

Section "B" was constructed in 2002. Service lines are copper except the "Green" line (PEX) service to Section "A". Plumbing on the map may contain lead where joints were soldered. Fixtures may also contain lead as they were also installed prior to 2014.

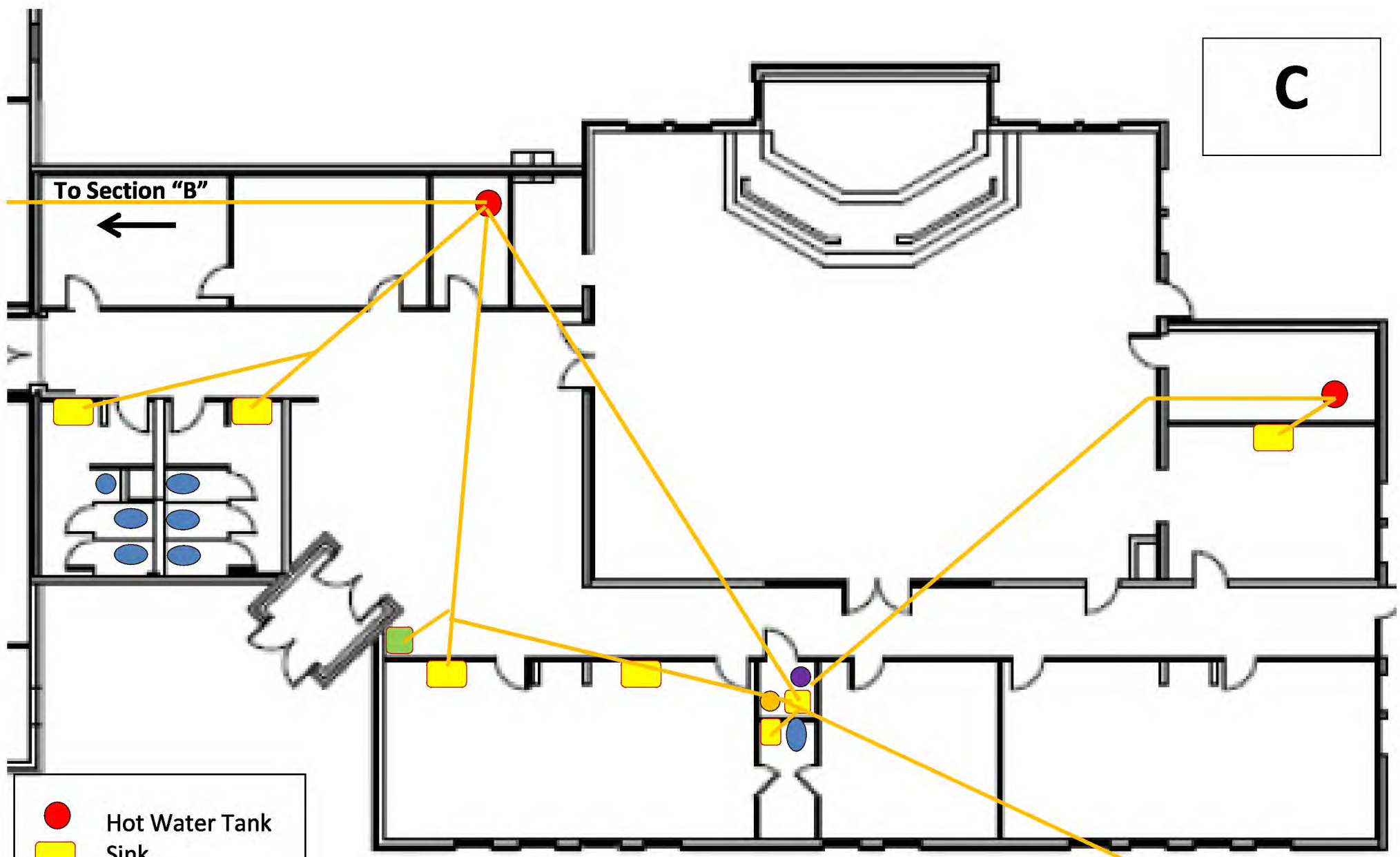


From Section "C"

To Section "A"

Risen Christ Lutheran Church and School
41 E. Possum Road,
Springfield, OH 45502
Section "B"

- Hot Water Tank
- Sink
- Toilet
- Urinal
- Water Fountain



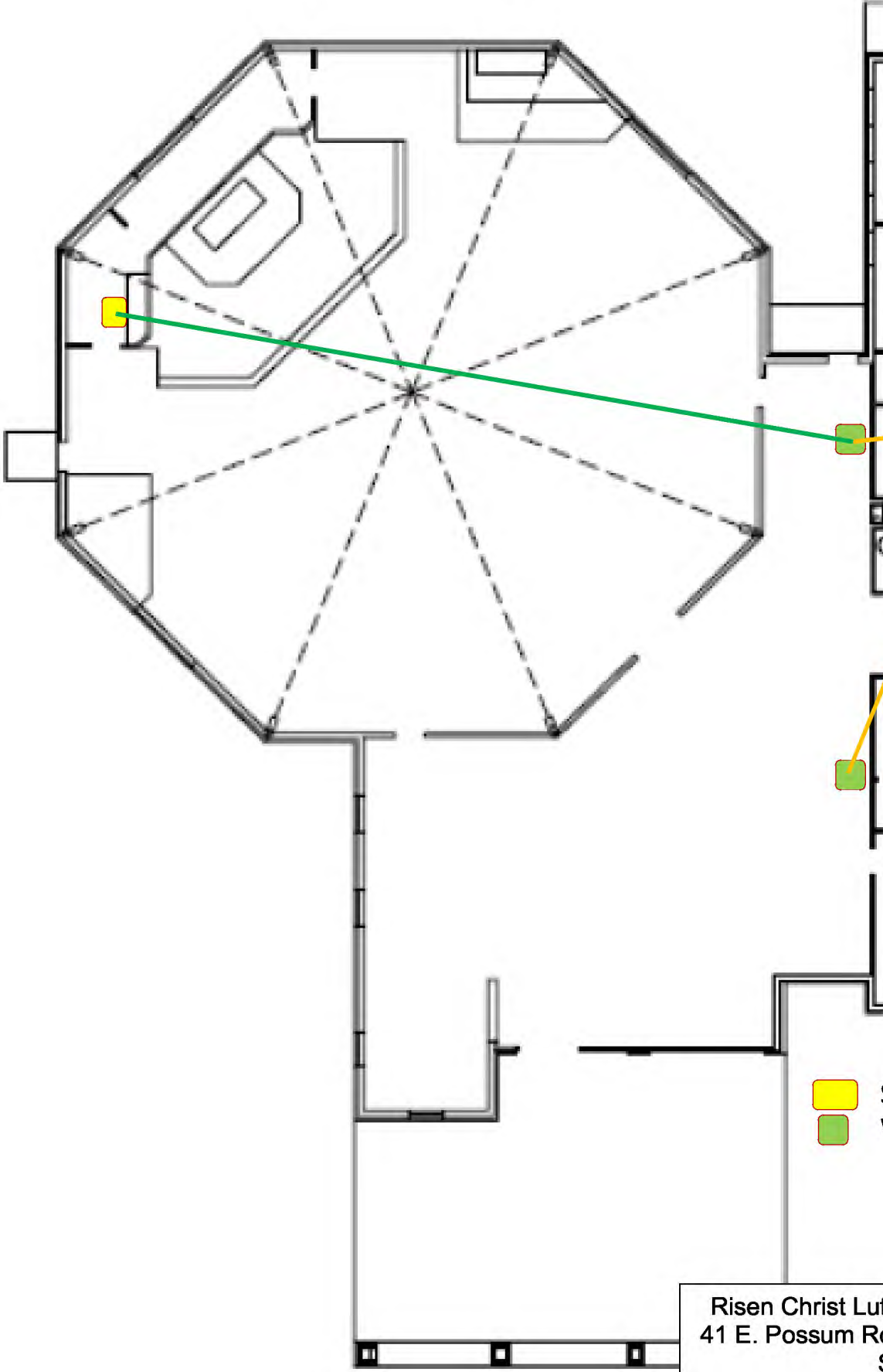
- Hot Water Tank
- Sink
- Toilet
- Urinal
- Water Fountain
- Water Softener
- Water Tank
- Well

Structure was built in 1991. All water lines including line from well are copper. Plumbing on the map may contain lead where joints were soldered. Fixtures may also contain lead as they were also installed prior to 2014.

Risen Christ Lutheran Church and School
 41 E. Possum Road, Springfield, OH 45502
 Section "C"

A

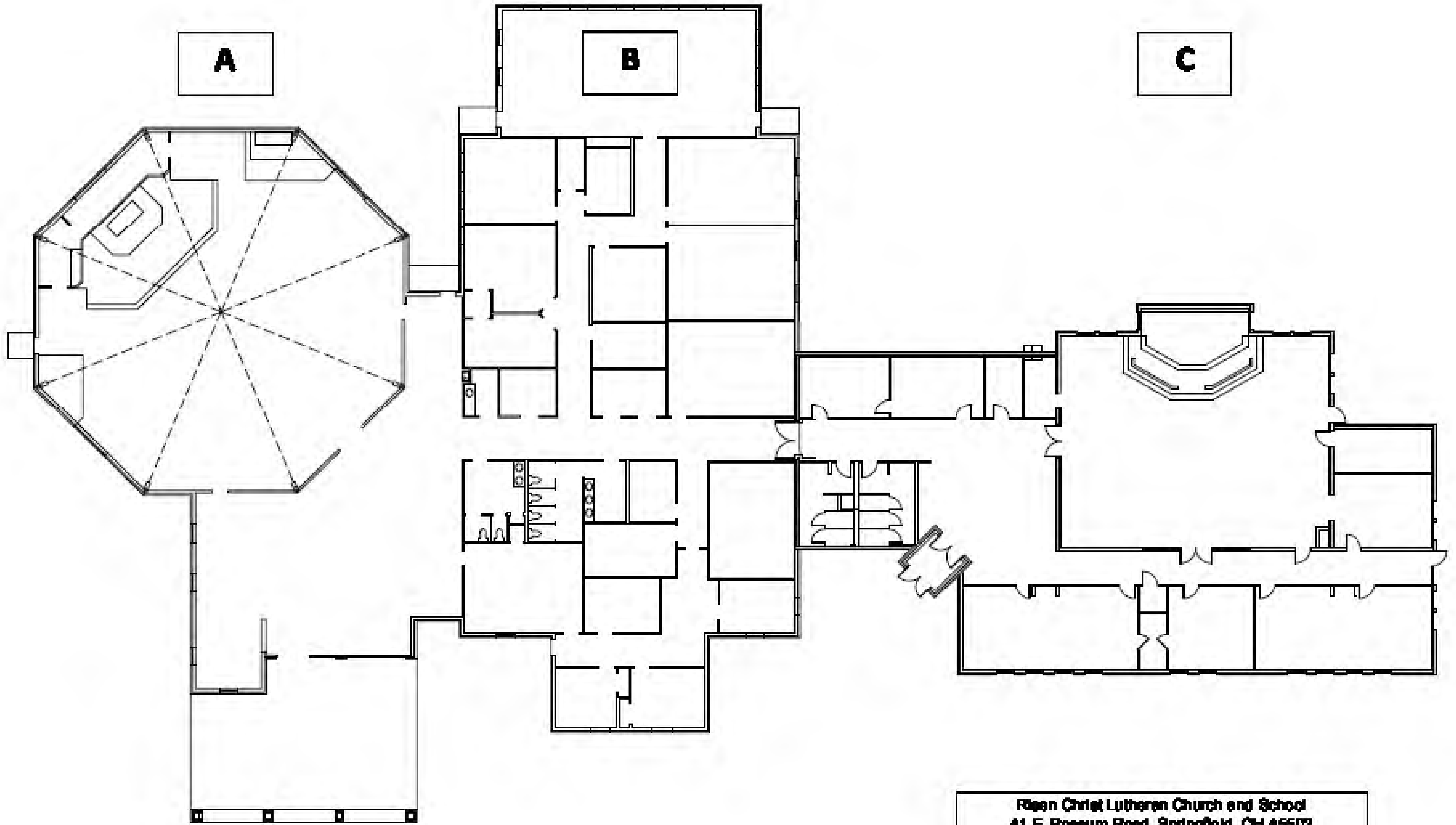
Structure was built in 2009. The plumbing is PEX line but built prior to 2014 may have lead in fixtures. Drinking fountains on map are plumbed with copper prior to 2014, may have lead content in solder joints.



From Section "B"

-  Sink
-  Water Fountain

Risen Christ Lutheran Church and School
41 E. Possum Road, Springfield, OH 45502
Section "A"



**Risen Christ Lutheran Church and School
41 E. Possum Road, Springfield, OH 45502
Master Layout of Buildings**