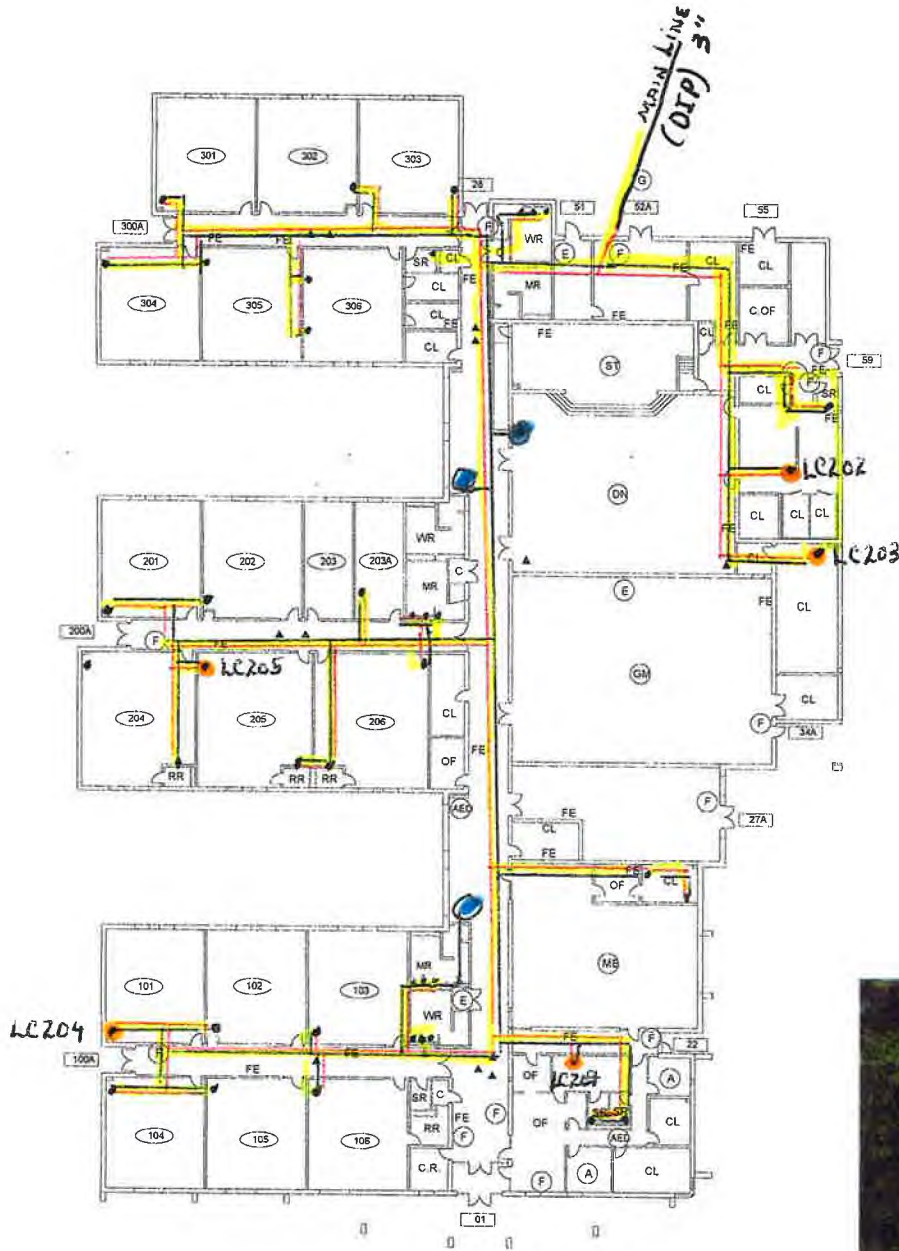


116 Middle Street, Medway, Ohio  
 Medway, Ohio 45341

### MEDWAY ELEMENTARY



1" = 24'

NOTE: There are no lead service lines. Copper lines may include lead-containing components.

#### IN HOUSE PIPING COPPER LINES

- Cold Domestic Water Lines
- Hot Water Lines
- SMP ID
- Drinking Fontaines
- Sink

- |              |   |
|--------------|---|
| CRITICAL     | <ul style="list-style-type: none"> <li>(AED) LOCATION OF EXISTING AED</li> <li>(E) ELECTRICAL SHUTOFF</li> <li>(FH) FIRE HYDRANTS</li> <li>(F) FIRE ALARM PANEL</li> <li>(G) GAS SHUT OFF</li> <li>(K) KNOX BOX</li> <li>(S) SPRINKLER SHUTOFF</li> <li>(W) WATER SHUTOFF</li> </ul>  |
| NON-CRITICAL | <ul style="list-style-type: none"> <li>(A) ADMINISTRATIVE SUITE</li> <li>(R) AREA OF REFUGE</li> <li>(▲) CAMERA</li> <li>(CORR) CORRIDOR</li> <li>(E) ELEVATOR</li> <li>(DR.T) EXTERIOR DOORS</li> <li>(FE) FIRE EXTINGUISHER</li> <li>(P) LOCATION OF BLUEPRINTS</li> <li>(RA) ROOF ACCESS POINT</li> <li>(R) ROOM NUMBER</li> <li>(SM) SECURITY MONITORING AND ACCESS CONTROL</li> <li>(SE.T) SERVICE ENTRANCE</li> </ul> |

- MEDWAY ELEMENTARY KEY:**
- MR - MEN'S RESTROOM
  - SMR - STAFF MEWS RESTROOM
  - WR - WOMEN'S RESTROOM
  - SWR - STAFF WOMEN'S RESTROOM
  - WLR - WOMEN'S LOCKER ROOM
  - RR - UNISEX RESTROOM
  - SR - UNISEX STAFF RESTROOM
  - AV - AUDIO VISUAL ROOM
  - C - CUSTODIAL
  - C.OF - CUSTODIAL OFFICE
  - C.R - CONFERENCE ROOM
  - CR - CLASS ROOM
  - DR - DISH ROOM
  - OF - OFFICE
  - E - ELEVATOR
  - CL - CLOSET / STORAGE AREA
  - M - MECHANICAL ROOM
  - L - LOCKERS
  - NR - NETWORK ROOM

MEDWAY ELEMENTARY  
 116 MIDDLE ST  
 MEDWAY, OHIO 45341  
 (937) 845-4475  
 FACILITY SAFETY PLAN  
 OHIO FACILITIES CONSTRUCTION COLLESSION





Google

Medway School

METER Plant Supply

WELL

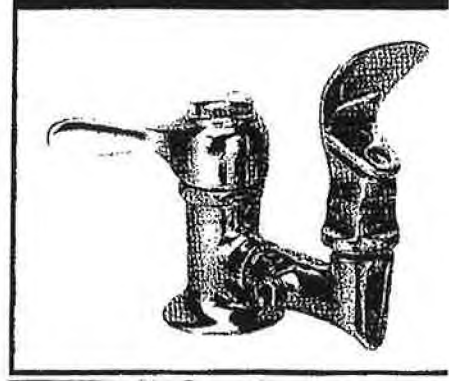
116 MIDDLE Street  
Medway, Ohio 45341

MODEL:  2507A  2509  3041

# 2507A Fountain Hea



These fountains are certified to NSF/ANSI 61.



### Model 2507A

Two-stream, mound-building projector. Lead-free chrome-plated fittings. Lever handle self-closing stop. Removable shutoff seat. Volume regulator 3" center distance. 1/4" NPT supply.

*Classroom Fountains installed: 2006*

## ELKAY<sup>®</sup> SPECIFICATIONS

*FI*

### Lustertone<sup>®</sup> Single Bowl Classroom Sinks and Sink Packages - Double Ledge Models DRKR and DRKRQ Series Models DRKAD and DRKADQ Series - A.D.A. Compliant

#### GENERAL

Highest quality sink bowl seamlessly formed of #18 gauge, type 304 (18-8) nickel bearing stainless steel. Self-rimming.

#### CLASSROOM/INSTITUTIONAL SINK PACKAGES

Models DRKR(Q)2220C, DRKR(Q)2517C, DRKR(Q)3119C, DRKAD(Q)2220C, DRKAD(Q)2517C and DRKAD(Q)3119C feature a scratch and crack resistant stainless steel sink, Contemporary Hi-Arc<sup>®</sup> faucet and No Lead Flexi-Guard<sup>®</sup> Bubbler. Package includes:

- (1) LK2439 Two-handle Contemporary Hi-Arc concealed undermount faucet with 45° restricted swing spout and aerator. Outlet height: 10"; Reach: 6-1/2". No spray.
- (1) LK1141A No Lead Flexi-Guard<sup>®</sup> Bubbler. Pushbutton valve design bubbler meets ANSI and ADA requirements. Designed so that water never comes in contact with lead-containing materials. Flexi-Guard safety bubbler flexes on impact to prevent accidental injury when getting a drink. Built-in adjustable water volume control.
- (1) LK35 Duo strainer.



Model DRKR(Q)2517C

#### OTHER

DRKAD(Q)2220, DRKAD(Q)2522 and DRKAD(Q)3119 drain opening is 3-1/2" and located centered left-to-right and off-center front-to-back as illustrated.

All other drain opening sizes are 3-1/2" and centered in bowl as illustrated.

Slotted hole allows for vandal-resistant faucet and bubbler.

NOTE: Unless otherwise specified, sink is furnished with 4 faucet holes as shown (see back page).

*\* DRKAD-2220-55-4M*

These sinks comply with ANSI Standard A112.19.3M.



Both the faucet and the bubbler are classified by Underwriters Laboratories Inc. to NSF/ANSI61 for residential use.

#### SINK DIMENSIONS (INCHES)\*

U-Channel Model Number	Quick-Clip <sup>®</sup> Model Number	Overall		Inside Bowl			Cutout in Countertop (1 1/2" Radius Corners)		No. of Faucet Holes (see back page)	3 1/2" Drain Opening (see above for details)	Minimum Cabinet Size	Ship. Wt. Lbs.
		L	W	L	W	D	L	W				
		A	B	C	D	E						
DRKR2220C	DRKRQ2220C	22	19 1/2	13 1/2	16	7 5/8	21 3/8	18 7/8	4	Centered	27	22
†DRKR2220	†DRKRQ2220	22	19 1/2	13 1/2	16	7 5/8	21 3/8	18 7/8	2, 2LM or 4	Centered	27	13 1/2
DRKR2517C	DRKRQ2517C	25	17	16	13 1/2	7 5/8	24 3/8	16 3/8	4	Centered	30	21
†DRKR2517	†DRKRQ2517	25	17	16	13 1/2	7 5/8	24 3/8	16 3/8	2, 2LM or 4	Centered	30	13
DRKR2522	DRKRQ2522	25	22	16	19	7 5/8	24 3/8	21 3/8	2, 2LM or 4	Centered	30	16
DRKR3119C	DRKRQ3119C	31	19 1/2	22	16	7 5/8	30 3/8	18 7/8	4	Centered	36	27
†DRKR3119	†DRKRQ3119	31	19 1/2	22	16	7 5/8	30 3/8	18 7/8	2, 2LM or 4	Centered	36	18 1/2
DRKAD2220C	DRKADQ2220C	22	19 1/2	13 1/2	16	†	21 3/8	18 7/8	4	Off-Centered	27	22 1/2
†DRKAD2220	†DRKADQ2220	22	19 1/2	13 1/2	16	†	21 3/8	18 7/8	2, 2LM or 4	Off-Centered	27	13 1/2
DRKAD2517C	DRKADQ2517C	25	17	16	13 1/2	†	24 3/8	16 3/8	4	Centered	30	22
†DRKAD2517	†DRKADQ2517	25	17	16	13 1/2	†	24 3/8	16 3/8	2, 2LM or 4	Centered	30	13
DRKAD2522	DRKADQ2522	25	22	16	19	†	24 3/8	21 3/8	2, 2LM or 4	Off-Centered	30	16
DRKAD3119C	DRKADQ3119C	31	19 1/2	22	16	†	30 3/8	18 7/8	4	Off-Centered	36	25
†DRKAD3119	†DRKADQ3119	31	19 1/2	22	16	†	30 3/8	18 7/8	2, 2LM or 4	Off-Centered	36	19

Tecumseh Local School District  
9760 West National Road  
New Carlisle, OH 45344

Medway Elementary School PWSID OH1238312  
116 Middle Street  
Medway, OH 45319

### **Narrative for Medway Elementary School (OH1238312)**

#### **Physical Facility and Source Water**

The Medway Elementary School (PWSID OH1238312) is in a one-story building which began construction in 2005, and was placed in service in August, 2006. The water system consists of one ground water well (existing well, age unknown) and a pump building with pressure tanks and a separate fire suppression system.

#### **Water Distribution System**

The water line from the pump building enters the north side of the building via a three-inch ductile iron pipe. Inside the building, the water is distributed throughout the building in copper lines. The copper lines feature lead-free soldered connections. Each student classroom is plumbed with a single restroom with wash basin, and a separate hot and cold tap with sink inside the classroom. Each classroom sink has an attached drinking fountain fixture (see file name "OH1238312 Medway fixture.pdf" for details). These hot and cold taps, and the affixed drinking fountain, are chrome plated brass of the "lead-free" (up to 8% lead) variety. The hallway, wall-mounted drinking fountains feature plastic water lines and a stainless steel water tank.

The age of the water service lines are from the building's new construction in 2005. The water lines are copper lines with soldered joints. The connection from the water line entering the building is covered with pipe insulation and cannot be seen. Since brass valves are in place along the water lines. We used the yellow color code to indicate the potential presence of lead, although the "lead-free" fittings (that contain as much as 8% lead) were used during construction.

The color codes shown on the map are explained below:

1. Yellow: The hot and cold lines are highlighted in yellow to show potential fixtures and fittings that may contain lead.
2. Black: Water lines in black and highlighted in yellow are cold water lines
3. Red: Water lines in red and highlighted in yellow are hot water lines.
4. Blue: Drinking fountains (in addition to those attached to the classroom sinks, there are wall-mounted drinking fountains located in the main hallway and cafeteria.
5. Orange: The lead and copper sampling sites are indicated by an orange dot with the newly assigned sampling identification numbers.
6. The map scale is one inch equals 26 feet.

#### **Sampling Sites:**

The sites chosen for lead and copper sampling are shown on the map as an orange dot, along with the newly assigned sample numbers (e.g. LC201). A file has been attached showing the sampling locations ("OH1238312 Medway SMP.pdf").

#### **Aerial Color Photo Map**

We have included a color photo map for clarity. The file name is "OH1238312 Medway Photomap.pdf".