

TECUMSEH HIGH SCHOOL FIRST FLOOR

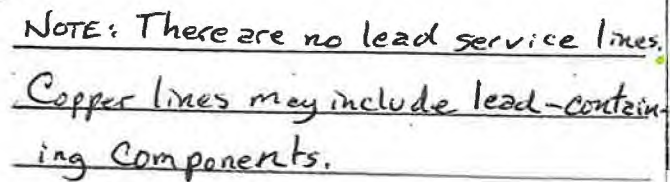


• "NO LEAD" FUTURE
IN HOUSE PIPING
COPPER LINES
• MAIN supply line =
from Basement
- Cold Domestic
- Hot Domestic supply kinds
• SMP ID
• Drinking Fountain
X MAIN WATER
supply IN Basement
• SINK

- COMMON AREAS**
- | | |
|----|-----------|
| DN | DINING |
| GM | GYMNASIUM |
| ME | MEDIA |
| ST | STAGE |

TECUMSEH HIGH SCHOOL
9830 W NATIONAL RD
NEW CARLISLE, OH
(937) 845-4500
FACILITY SAFETY PLAN
OHIO FACILITIES CONSTRUCTION COMMISSION

TECUMSEH HIGH SCHOOL SECOND FLOOR



- TECUMSEH HIGH SCHOOL
9830 W NATIONAL RD
NEW CARLISLE, OH
(937) 845-4500
FACILITY SAFETY PLAN
OHIO FACILITIES CONSTRUCTION COMMISSION



TECUMSEH HIGH SCHOOL
MR - MEN'S RESTROOM
SMR - STAFF MEN'S RESTROOM
WR - WOMEN'S RESTROOM
SWR - STAFF WOMEN'S RESTROOM
WLR - WOMEN'S LOCKER ROOM
RR - UNISEX RESTROOM
SR - UNISEX STAFF RESTROOM
AV - AUDIO VISUAL ROOM
C - CUSTODIAL
CJF - CUSTODIAL OFFICE
C.R. - CONFERENCE ROOM
CR - CLASS ROOM
DR - DISH ROOM
OF - OFFICE
E - ELEVATOR
CL - CLOSET / STORAGE AREA
M - MECHANICAL ROOM
L - LOCKERS
NR - NETWORK ROOM

9830 West National Road
New Carlisle, Ohio 45344

TECUMSEH HIGH SCHOOL BASEMENT

NOTE: There are no lead service lines. Copper lines may include lead-containing components.

① MAIN Supply Line to 1st Floor

② MAIN Supply Line from Tower

- | | | | |
|----------|--|--------------------------|----------------------|
| CRITICAL | (AED) | LOCATION OF EXISTING AED | |
| | (E) | ELECTRICAL SHUTOFF | |
| | (FH) | FIRE HYDRANTS | |
| | (F) | FIRE ALARM PANEL | |
| | (G) | GAS SHUT OFF | |
| | (K) | KNOX BOX | |
| | (S) | SPRINKLER SHUTOFF | |
| | (W) | WATER SHUTOFF | |
| | NON-CRITICAL | (A) | ADMINISTRATIVE SUITE |
| | | (R) | AREA OF REFUGE |
| (CAM) | | CAMERA | |
| (COR) | | CORRIDOR | |
| (E) | | ELEVATOR | |
| (DR) | | EXTERIOR DOORS | |
| (FE) | | FIRE EXTINGUISHER | |
| (P) | | LOCATION OF BLUEPRINTS | |
| (RA) | | ROOF ACCESS POINT | |
| (123) | | ROOM NUMBER | |
| (SM) | SECURITY MONITORING AND ACCESS CONTROL | | |
| (SE) | SERVICE ENTRANCE | | |

- | | | |
|--------------|---|-----------|
| COMMON AREAS | (DN) | DINING |
| | (GN) | GYMNASIUM |
| | (ME) | MEDIA |
| | (ST) | STAGE |
| | TECUMSEH HIGH SCHOOL
9830 W NATIONAL RD
NEW CARLISLE, OH
(937) 845-4500
FACILITY SAFETY PLAN
OHIO FACILITIES CONSTRUCTION COMMISSION | |

South East
Corner of Building
Main Service Line
Entry (DIP) 8"

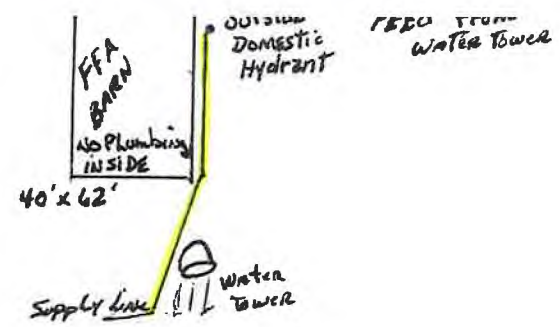


TECUMSEH HIGH SCHOOL:
MR - MEN'S RESTROOM
SMR - STAFF MEN'S RESTROOM
WR - WOMEN'S RESTROOM
SWR - STAFF WOMEN'S RESTROOM
VLR - WOMEN'S LOCKER ROOM
RR - UNISEX RESTROOM
SR - UNISEX STAFF RESTROOM
AV - AUDIO VISUAL ROOM
C - CUSTODIAL
C OF - CUSTODIAL OFFICE
C.R. - CONFERENCE ROOM
CR - CLASS ROOM
DR - DISH ROOM
OF - OFFICE
E - ELEVATOR
CL - CLOSET / STORAGE AREA
M - MECHANICAL ROOM
L - LOCKERS
NR - NETWORK ROOM



SCALE: 1" = 50 feet

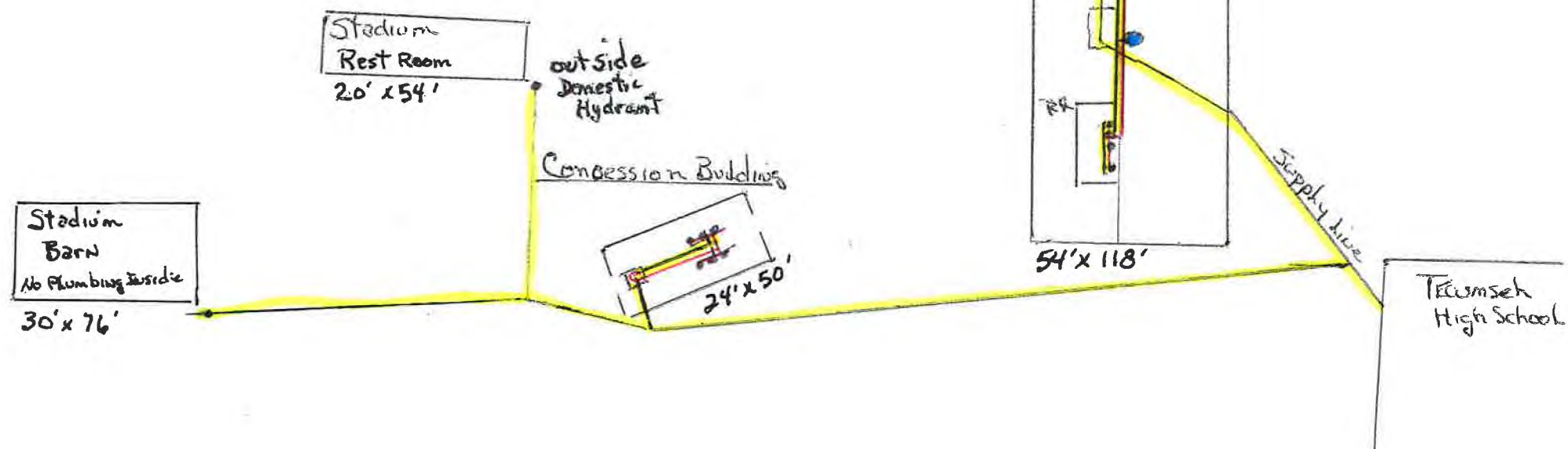
9830 West National Road
New Carlisle, Ohio 45344



- Ⓚ Hot Water Heater
- Cold Domestic
- Hot Supply Lines
- Sinks
- Drinking Fountain
- COPPER FEED LINES
- May include
- lead-containing components.

NOTE: There are no lead service lines.
Copper lines may include lead-containing components.

Stadium Field House



Teemseh
H.S

Supply line from Water Tower

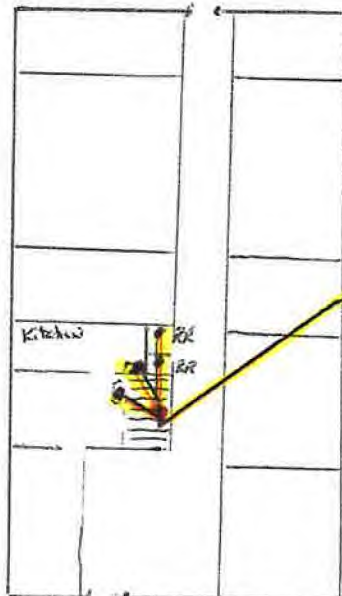
Copper - may include "lead-containing components"

NOTE: There are no lead

service lines. Copper lines

may include lead-containing
components.

CENTRAL OFFICE



42' x 86'

9760 West National Road

New Carlisle, Ohio 45344



48' x 88'

Back Flow

Old Olive Branch
Rotunda

No plumbing

84' x 84'

9710 West National Road

New Carlisle, Ohio 45344

COPPER FEED LINES - MAY
HAVE LEAD-CONTAINING COMPONENTS

DRINKING FOUNTAINS

COLD WATER HEATER

COLD DOMESTIC
WATER SUPPLY



GRAPHIC SCALE

NOT TO SCALE

Tecumseh Main Campus Main Supply
PWS# 1251812

Water Tower

TECUMSEH LOCAL
SCHOOL DISTRICT

Student
Rest Room

Compassion
Building

Tecumseh High School

WATER MAINS shown in GOLD color

Bus Garage

Tecumseh Senior
High School

Central Office

Rotunda /
Old Olive
Branch

Tecumseh Middle School
10000 WEST
NATIONAL ROAD
NEW CASS, MI 48064

W National Rd

W National Rd

W National Rd



TECUMSEH LOCAL
SCHOOL DISTRICT

Tecumseh High School

Tecumseh Middle School

Tecumseh Senior
High School

W National Rd

W National Rd

W National Rd

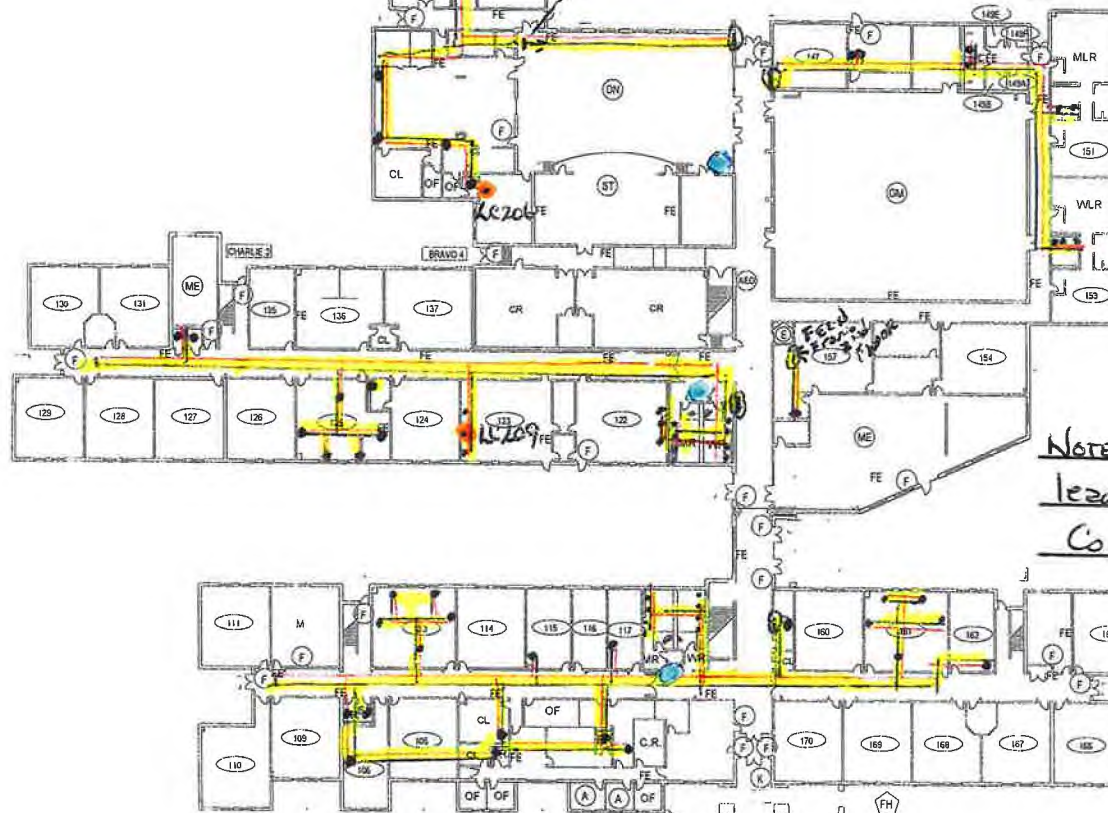
9830 West National Rd
New Carlisle, Ohio
45394

10,000 WEST National Road
New Carlisle, Ohio 45344

(DIP) MAIN SERVICE LINE 8"

1st Story
2nd Story

TECUMSEH MIDDLE SCHOOL FIRST FLOOR



Note: There are no lead service lines.
Copper lines may include lead-containing components.

NO LEAD FUTURE

— Cold Domestic Water Lines
— Hot Water Lines

SMP ID

Drinking Fountains

Plumbing from 2nd Floor to 1st Floor
In House Piping
Copper Lines
Sinks

CRITICAL	(AEB)	LOCATION OF EXISTING AED
	(E)	ELECTRICAL SHUTOFF
	(FH)	FIRE HYDRANTS
	(F)	FIRE ALARM PANEL
	(G)	GAS SHUT OFF
	(K)	KNOX BOX
	(S)	SPRINKLER SHUTOFF
	(W)	WATER SHUTOFF
	(A)	ADMINISTRATIVE SUITE
	(R)	AREA OF REFUGE
NON-CRITICAL	(CAM)	CAMERA
	(COR)	CORRIDOR
	(E)	ELEVATOR
	(EXT)	EXTERIOR DOORS
	(FE)	FIRE EXTINGUISHER
	(P)	LOCATION OF BLUEPRINTS
	(RA)	ROOF ACCESS POINT
	(RN)	ROOM NUMBER
	(SM)	SECURITY MONITORING AND ACCESS CONTROL
	(SE I)	SERVICE ENTRANCE

COMMON AREAS	(DN)	DINING
	(GM)	GYMNASIUM
	(ME)	MEDIA
	(ST)	STAGE

TECUMSEH MIDDLE SCHOOL
10000 W National RD
New Carlisle, OH 45344
(937) 845-4465
FACILITY SAFETY PLAN
OHIO FACILITIES CONSTRUCTION COMMISSION



TECUMSEH MIDDLE SCHOOL:
MR - MEN'S RESTROOM
SMR - STAFF MEN'S RESTROOM
WR - WOMEN'S RESTROOM
SWR - STAFF WOMEN'S RESTROOM
WLR - WOMEN'S LOCKER ROOM
RR - UNISEX RESTROOM
SR - UNISEX STAFF RESTROOM
AV - AUDIO VISUAL ROOM
C - CUSTODIAL
C.OF - CUSTODIAL OFFICE
C.R. - CONFERENCE ROOM
CR - CLASS ROOM
DR - DISH ROOM
OF - OFFICE
E - ELEVATOR
CL - CLOSET / STORAGE AREA
M - MECHANICAL ROOM
L - LOCKERS
NR - NETWORK ROOM



1" = 40'

10,000 WEST NATIONAL ROAD
New Carlisle, Ohio 45344

TECUMSEH MIDDLE SCHOOL SECOND FLOOR



NOTE: There are no lead service lines. Copper lines may include Lead-containing components.

NO LEAD FIXTURE	
- Cyclic Domestic Water Line	
- 140T	
SMP ID	
DRINKING FOUNTAIN	
1st Floor Feed	
CRITICAL	<ul style="list-style-type: none"> AED LOCATION OF EXISTING AED E ELECTRICAL SHUTOFF FH FIRE HYDRANTS F FIRE ALARM PANEL G GAS SHUT OFF K KNOX BOX S SPRINKLER SHUTOFF W WATER SHUTOFF
NON-CRITICAL	<ul style="list-style-type: none"> A ADMINISTRATIVE SUITE R AREA OF REFUGE ▲ CAMERA ■ CORRIDOR E ELEVATOR DR 1 EXTERIOR DOORS FE FIRE EXTINGUISHER P LOCATION OF BLUEPRINTS RA ROOF ACCESS POINT 123 ROOM NUMBER SM SECURITY MONITORING AND ACCESS CONTROL SE 1 SERVICE ENTRANCE
COMMON AREAS	<ul style="list-style-type: none"> DN DINING GM GYMNASIUM ME MEDIA ST STAGE
TECUMSEH MIDDLE SCHOOL: MR - MEN'S RESTROOM SMR - STAFF MEN'S RESTROOM WMR - WOMEN'S RESTROOM SWR - STAFF WOMEN'S RESTROOM WLR - WOMEN'S LOCKER ROOM RR - UNISEX RESTROOM SR - UNISEX STAFF RESTROOM AV - AUDIO VISUAL ROOM C - CUSTODIAL C OF - CUSTODIAL OFFICE C R - CONFERENCE ROOM CR - CLASS ROOM DR - DISH ROOM OF - OFFICE E - ELEVATOR CL - CLOSET / STORAGE AREA M - MECHANICAL ROOM L - LOCKERS NR - NETWORK ROOM	
TECUMSEH MIDDLE SCHOOL 10000 W National RD New Carlisle, OH 45344 (937) 845-4465 FACILITY SAFETY PLAN OHIO FACILITIES CONSTRUCTION COMMISSION	



SCALE 1" = 40 feet.





10,000 West National Rd.
New Paris, Ohio 45344

Tecumseh Local School District
9760 West National Road
New Carlisle, OH 45344

Tecumseh Schools Main Campus PWSID OH1251812
9830 W. National Road (Tecumseh High School)
10000 W. National Road (Tecumseh Middle School)
New Carlisle, OH 45344

Narrative for Tecumseh Schools Main Campus (OH1251812)

Physical Facility and Source Water

The Tecumseh Schools Main Campus (PWSID OH1251812) consists of the following facilities:

1. Water Treatment Plant and Water Tower
2. Tecumseh High School
3. Tecumseh Middle School
4. Tecumseh Local School District Central Office
5. Bus Garage
6. District Storage Building (known as "Olive Branch Rotunda" building)
7. Athletic Building
8. Stadium Concessions Building
9. Stadium restrooms
10. Stadium Storage Barn (yard hydrant only)
11. FFA Barn (yard hydrant only)
12. Baseball Field (yard hydrant only)

Water Treatment Plant and Water Tower

The Water Treatment Plant consists of two newly constructed ground water wells (both wells were newly drilled in 2005), filtration, iron and manganese removal, ion exchange softening, and chlorination. A 185 foot tall water tower provides storage and system pressure with a 100,000 gallon capacity. All of these facilities were constructed in 2006 and 2007.

Tecumseh High School

The Tecumseh High School building is a two-story building (with partial basement beneath the gymnasium) which began construction in 2005, and was placed in service in December, 2007. There are three separate maps showing the first floor, second floor, and basement area at a scale of one inch equals 50 feet.

The water line from the treatment plant enters the east side of the building via a four-inch ductile iron pipe. The age of the water service lines are from the building's new construction in 2005. The water lines are copper lines with soldered joints. The connection from the water line entering the building is covered with pipe insulation and cannot be seen. The fixtures may contain lead-containing components. Since brass valves are in place along the water lines, we used the yellow color code to indicate the potential presence of lead, although the "lead-free" fittings (that contain as much as 8% lead) were used during construction.

Inside the building, the water is distributed throughout the building in copper lines. The copper lines feature lead-free soldered connections. Some student classrooms (science labs) are plumbed with separate hot and cold water taps with sink. These hot and cold taps are chrome plated brass of the "lead-free" variety (which may contain up to 8% lead). The hallway, wall-mounted drinking fountains feature plastic water lines and a stainless steel water tank.

Map Legend – Tecumseh High School

The color codes shown on the map are explained below:

1. Yellow: The copper hot and cold lines are highlighted in yellow to show potential fixtures and fittings that may include lead-containing components. A no-lead solder was used.
2. Black: Water lines in black and highlighted in yellow are cold water lines
3. Red: Water lines in red and highlighted in yellow are hot water lines.
4. Blue: Drinking fountains are wall-mounted and are located throughout the building. The drinking fountains contain no lead, referencing the product information.
5. Orange: The lead and copper sampling sites (SMPs) are indicated by an orange dot with the newly assigned sampling identification numbers (e.g. LC201). A graphic has been included listing the sampling locations.
6. The map scale is one inch equals 50 feet.

Sampling Sites:

The sites chosen for lead and copper sampling are shown on the map as an orange dot, along with the newly assigned sample numbers

Aerial Color Photo Map

For clarity, we have included an aerial color photo map of the entire Tecumseh Schools Main Campus.

Tecumseh Middle School

The Tecumseh Middle School building is a two-story building which began construction in 2005, and was placed in service in August, 2007. There are two separate maps showing the first floor and second floor at a scale of one inch equals 40 feet.

The water line from the treatment plant enters the north side of the building via a four-inch ductile iron pipe. The age of the water service lines are from the building's new construction in 2005. The water lines are copper lines with mechanical crimped joints. The connection from the water line entering the building is covered with pipe insulation and cannot be seen. Since brass valves are in place along the water lines, we used the yellow color code to indicate the potential presence of lead, although the "lead-free" fittings (that contain as much as 8% lead) were used during construction.

Inside the building, the water is distributed throughout the building in copper lines. The copper lines feature mechanical crimped joints and/or lead-free soldered connections at the fixtures. Some student classrooms (science labs) are plumbed with separate hot and cold water taps with sink. These hot and cold taps are chrome plated brass of the "lead-free" variety (which may contain up to 8% lead). The hallway, wall-mounted drinking fountains feature plastic water lines and a stainless steel water tank.

Athletic Building

The Athletic Building was constructed in 1996 for the purpose of providing home and visitor locker rooms with shower facilities, restrooms, and a drinking fountain. This building is a two-story structure, however there are no water lines extending to the second floor, which serves as the wrestling team practice area. The 2006-2007 copper line originates from the main high school building and enters the east side of the athletic building. The copper lines in the building are from 1996 construction and may include lead-containing components. Please refer to the hand-drawn map and aerial photo.

Stadium Concession Building

A ¾" copper service line enters the south side of the stadium concession building and was constructed during the year 2000. The copper lines are of soldered lead-free construction, but fixtures considered to be "lead-free" may include lead-containing components. The hot and cold taps are used for handwashing, food preparation, and cleaning. There are no restrooms here. Please refer to the hand-drawn map and aerial photo.

Stadium Bleacher Restrooms

A small building containing restrooms and handwashing facilities is located immediately south of the "home side" bleachers at the football field. This was constructed in the 1980s and the fixtures may include lead-containing components. Please refer to the hand-drawn map and aerial photo.

Stadium Storage Barn

A yard hydrant is located outside the building for wash-down purposes. There are no water lines in the building, which was constructed in the 1990s. Please refer to the hand-drawn map and aerial photo.

FFA Barn

A yard hydrant is located outside the building for animal watering and wash-down purposes. There are no water lines in the building, which was constructed in 2007. Please refer to the hand-drawn map and aerial photo.

Baseball Field

There is a yard hydrant located at the baseball diamond, located at the north side of the Campus. The date of construction for this line was 2007. Please refer to the hand-drawn map and aerial photo.