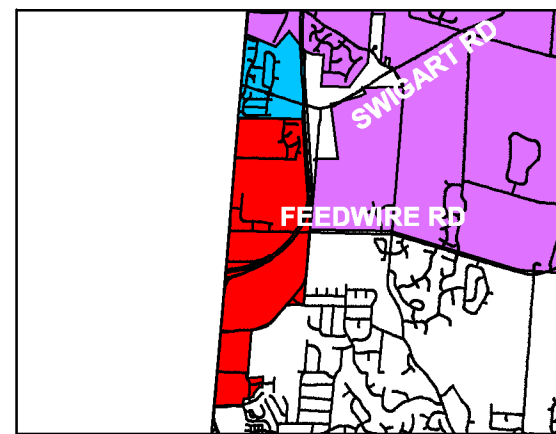
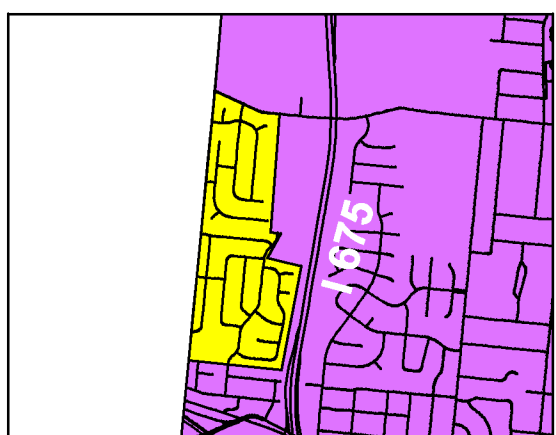
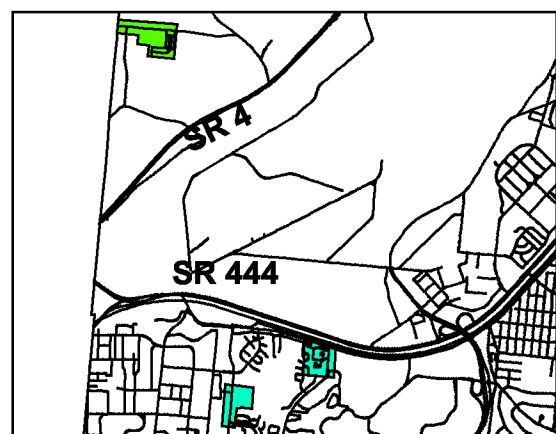
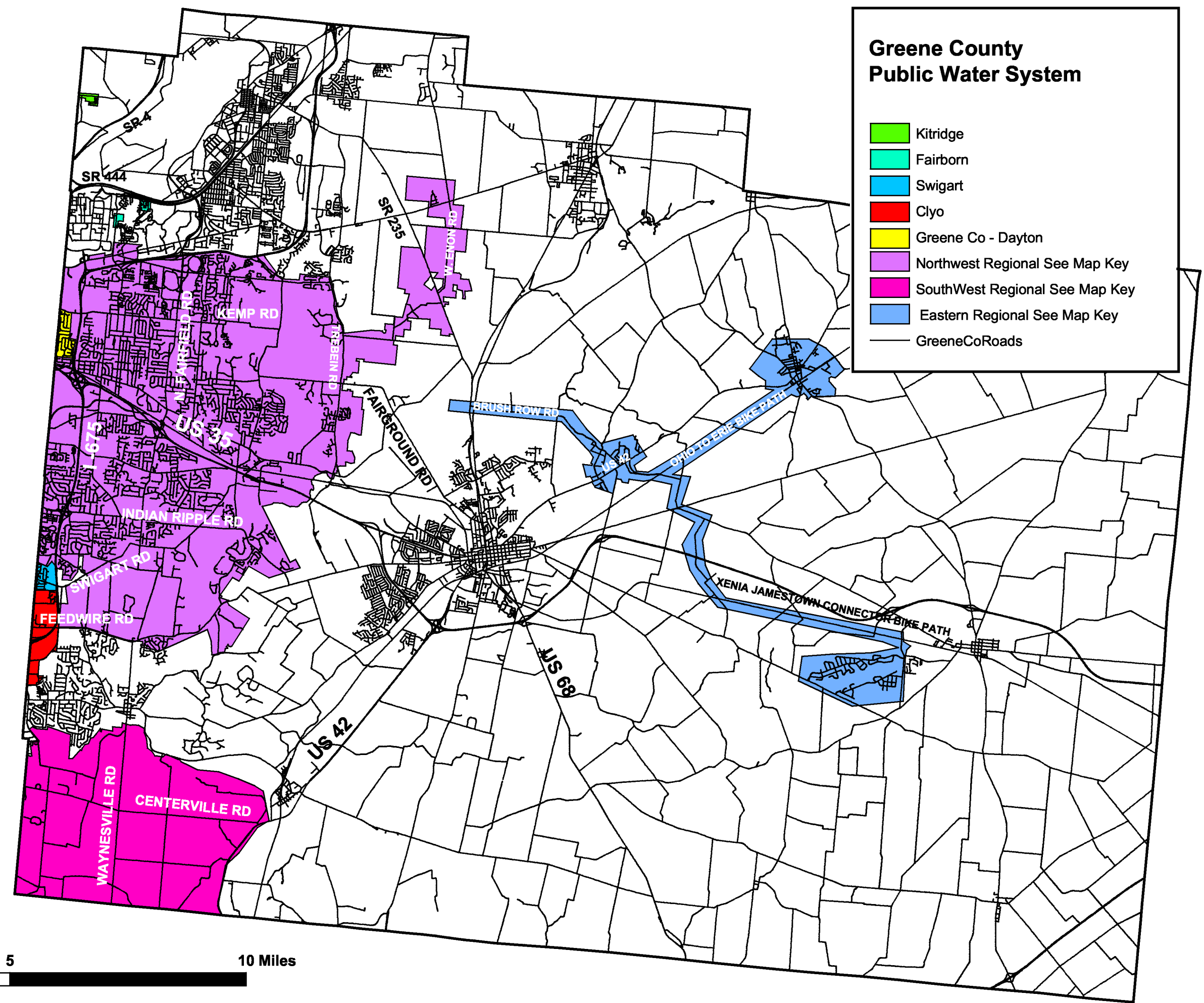


Greene County Public Water System

- Kitridge
- Fairborn
- Swigart
- Clyo
- Greene Co - Dayton
- Northwest Regional See Map Key
- SouthWest Regional See Map Key
- Eastern Regional See Map Key
- GreeneCoRoads

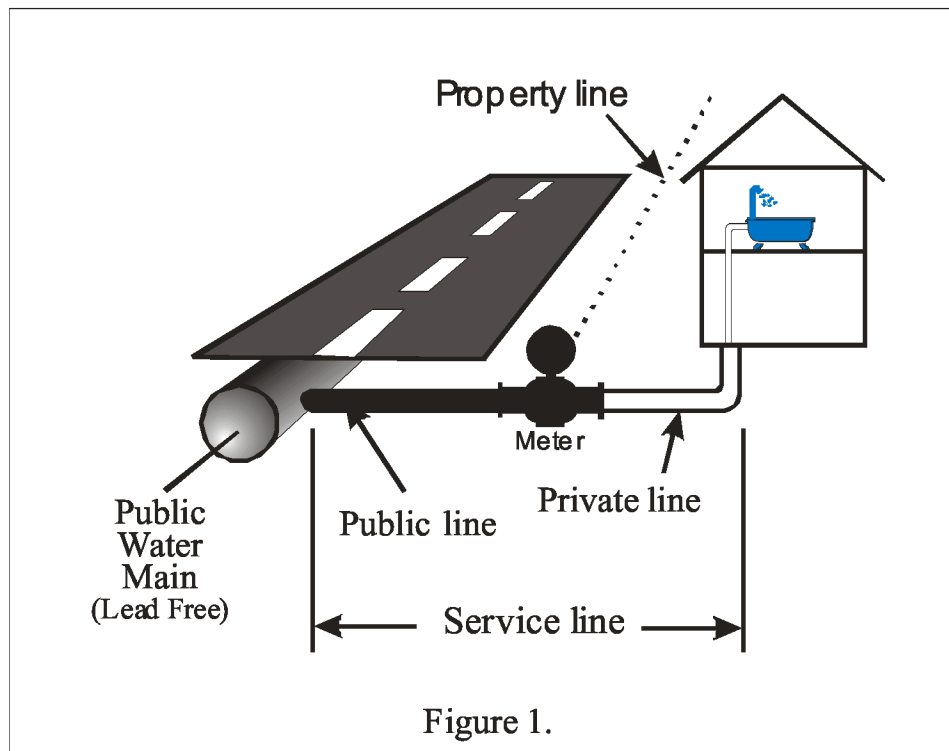


Greene County Ohio Sanitary Engineering Lead Mapping Report

Dayton-Greene Regional Public Water System PWS No. OH2900803

Lead and Water

Water is provided to our Greene County customers through a lead free water main. Water is then directed into the customers home or business through a service line. The service line consists of two components (see figure 1); the public service line (black) and the private service line (white). The public service line is owned and maintained by the County whereas the private service line is owned and maintained by the property owner. The service line contains brass valves and meters that may contain low levels of lead. Lead sources and lead levels vary between buildings, so it is important to identify and remove any lead sources in each household or business. A vast majority of Greene County's public water mains were developed after 1980's, which precludes the installation of the lead public water mains that ended in the 1950's. Based on historical permit records, local ordinances and distribution maintenance records, there are no public water mains and/or public service lines containing lead in our water distribution systems.



Sources of Lead in Drinking Water

- **Lead service pipe**
Greene County Sanitary Engineering public water mains and public service lines contain no lead.
- **Lead solder**
Solder joins pipes in household plumbing. In the past pipe solder contained various concentrations of lead. In 1998, lead solder was banned from use in household plumbing. If your house was built before 1998, your plumbing may contain solder.
- **Brass faucets, valves or fittings**
Almost all faucets, valves and fittings have brass components. Prior to 2014, brass faucets and fittings sold in the U.S. and labeled "lead-free" could contain up to eight percent lead. Effective January 2014, the Reduction of Lead in Drinking Water Act specifies that these materials may not contain more than 0.25 percent lead.

What You Need to Know About Lead

- Lead is a heavy metal that can enter drinking water from the corrosion of pipes and plumbing materials.
- Exposure to lead is a public health risk, especially for pregnant women and children under the age of six.
- The concentration of lead in drinking water varies among homes and businesses.

Lead Exposure and Health

- Lead can cause serious health problems if too much enters your body from drinking water or other sources.
- Infants, young children and pregnant women have the greatest risk of lead exposure.
- Lead can cause damage to the brain and kidneys, and can interfere with the production of red blood cells that carry oxygen to all parts of your body.
- Lead can stay in the bones and teeth for many years. During pregnancy and breastfeeding, lead can leave bone and move back into the bloodstream.
- Adults with kidney problems and high blood pressure are more likely to be affected by low levels of lead than healthy adults. Lead is stored in the bones and can be released later in life.

Use Filtered Tap Water

If you know you have sources of lead in your home, or you are unsure, you can reduce your exposure to lead by filtering the tap water you use for drinking and cooking. This is especially recommended for pregnant women or children under the age of six. Select a filter certified to meet NSF Standard 53 for lead.

Who is Responsible for Addressing Lead in Water in the Greene County Sanitary Engineering Service Area?

Greene County Sanitary Engineering Water Supply and Treatment

- Complies with the USEPA and Ohio EPA Lead and Copper Rule.
- Conducts regulatory and voluntary lead testing and reports results to Ohio EPA.

Private Property Owners

- Responsible for water service pipes and household plumbing.
- Responsible for ensuring household water quality and minimizing lead exposure, including testing water for lead, flushing household plumbing, and if necessary, using a water filter.

USEPA and Ohio EPA (Environmental Protection Agency)



- Enforces compliance with the Lead and Copper Rule in Greene County.
- Provides technical assistance to Greene County Sanitary Engineering Water Supply and Treatment.
- Reviews treatment processes, monitoring plans and test results to verify compliance with the Lead and Copper Rule.
- Issues violations for noncompliance and requires corrective actions to achieve compliance.

Service Map: The service map is divided into two categories. Each category pertains to plumbing and fixtures within the home or business.

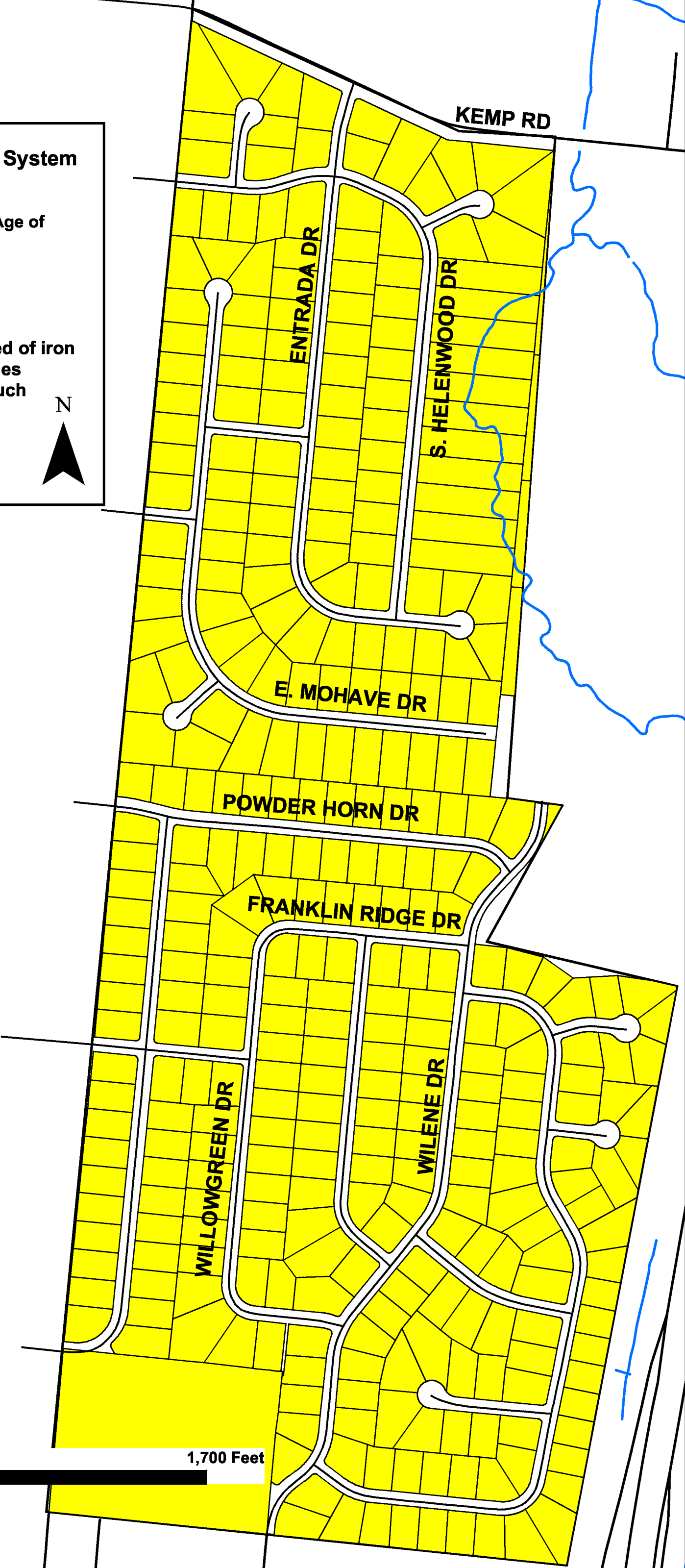
- **Prior to 2014 = Low to Potential Risk.** Buildings built in Ohio prior to 1998 or that used plumbing materials or solder manufactured before 1998 have potential risks due to materials containing greater than eight percent lead and have a higher risk of contributing lead to the drinking water. Buildings built in Ohio between 1998 and 2014 have a low potential risk due to the Ohio Plumbing Code (Effective March 30, 1998b) prohibiting the use of lead solder containing more than 0.2 percent lead.
- **After 2014 = Extremely Low Risk or No Risk.** Plumbing fixtures and materials manufactured after 2014 are required to have less than 0.25 percent lead by weight and have the lowest risk for contributing lead to the drinking water.

Greene Co - Dayton Water System
PWS #2900803

Areas of Lead Potential Based on Age of Building

-  Potential to Low Risk
-  Extremely Low to No Risk

Public water mains are comprised of iron and/or plastic. Public service lines contain no lead. Components such as brass valves and meters may contain a low level of lead.





**Board of
Commissioners**

**SANITARY ENGINEERING
DEPARTMENT**

667 Dayton-Xenia Road
Xenia, Ohio 45385-2605

Phone: (937) 562-7450
Fax: (937) 562-7465

*Enhancing the quality of
life and the environment
by providing excellent
water, wastewater and
solid waste services*

March 9, 2017

Jeffery H. Stark
District Office Compliance Officer
Ohio EPA/Div. of Drinking & Ground Waters
Southwest District Office
401 East Fifth Street
Dayton, OH 45402-2911

RE: Lead Mapping, Report, Sampling Locations & Verification Forms
Greene County Public Water Systems

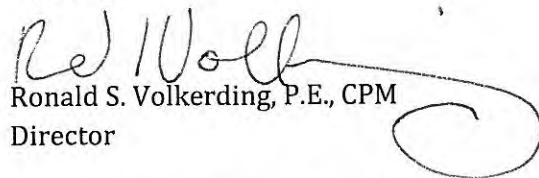
Dear Mr. Stark:

Attached you will find signed verification forms for each of the public water systems owned by the Greene County Board of Commissioners, and operated and maintained by the Greene County Sanitary Engineering Department. Also enclosed is a USB drive with PDF files of the water system maps of each public water system with narrative, and an Excel file of sampling locations. The public water systems included are as follows:

Public Water System Name	Public Water System Number
Northwest Regional	OH2903512
Eastern Regional	OH2906103
Southwest Regional	OH2903912
Clyo-Greene	OH2904203
Dayton-Greene	OH2900803
Fairborn-Greene	OH2956203
Kittridge-Greene	OH2905003
Swigart-Greene	OH2904103

Should you have any questions, please feel to contact me by telephone at (937) 562-7450, or by email at rvolkerding@co.greene.oh.us.

Sincerely,


Ronald S. Volkerding, P.E., CPM
Director

C: Brandon Huddleson, County Administrator
Randy Gilbert, Assistant Director
Kenneth French, Manager, WS&T
Raymond Cusick, Manager, Customer Service

VERIFICATION FORM FOR COMMUNITY PUBLIC WATER SYSTEMS CLAIMING NO LEAD SERVICE LINES

The owner or operator of all community public water systems must identify and map areas of their distribution system that are known or are likely to contain lead service lines. Systems must submit a copy of the applicable map to the Ohio Department of Health and the Ohio Department of Job and Family Services. Systems must also submit a report to the director containing at least both of the following: (1) The applicable map with narrative, and (2) A list of sampling locations used to collect samples as required by Ohio Revised Code (ORC) Section 6109.121 and any rules adopted thereunder, including contact information for the owner and occupant of each sampling site.

Should a water system determine no lead service lines exist in their distribution system, they must provide information stating they reviewed, at the minimum, historical permit records and local ordinances, distribution maintenance records and information pertaining to installation dates or materials for all services lines. This information must be verified below.

I HEREBY CERTIFY THAT THE FOLLOWING METHOD(S) WERE USED TO DETERMINE NO LEAD SERVICE LINES EXIST IN THIS WATER SYSTEM'S DISTRIBUTION SYSTEM, AS REQUIRED BY ORC 6109.121(F):

LEAD SERVICE LINE VERIFICATION
<p>This PWS states they have no lead service lines and has reviewed the following information (select one or more of the following):</p> <ul style="list-style-type: none">✓ Historical permit records and/or local ordinances✓ Distribution maintenance records (i.e. meter replacement, waterline break repairs)✓ Information pertaining to installation dates for all service lines (i.e. after 1986 when lead services lines were banned)✓ Service line material of all service lines is known (i.e. all service lines are known to be PVC)



Signature of Responsible Person

Ronald S. Volkerding, Director

Printed Name and Title of Responsible Person

03/09/2017

Date

PWS NAME: Dayton-Greene

PWS ID: OH2900803

COUNTY: Greene

For Ohio EPA use only:

Date Verification Rec'd: _____