

Legend

- Lead Service Suspected
- Non Lead service
- Lead service
- 1 inch
- 1.5 inch service
- 2 inch main
- 3 inch main
- 4 inch main
- 6 inch main
- 8 inch main
- 10 inch main
- 12 inch main
- 14 inch main

Northeast Quadrant

Legend

- Lead Service Suspected
- Non Lead service
- Lead service
- 1 inch
- 1.5 inch service
- 2 inch main
- 3 inch main
- 4 inch main
- 6 inch main
- 8 inch main
- 10 inch main
- 12 inch main
- 14 inch main

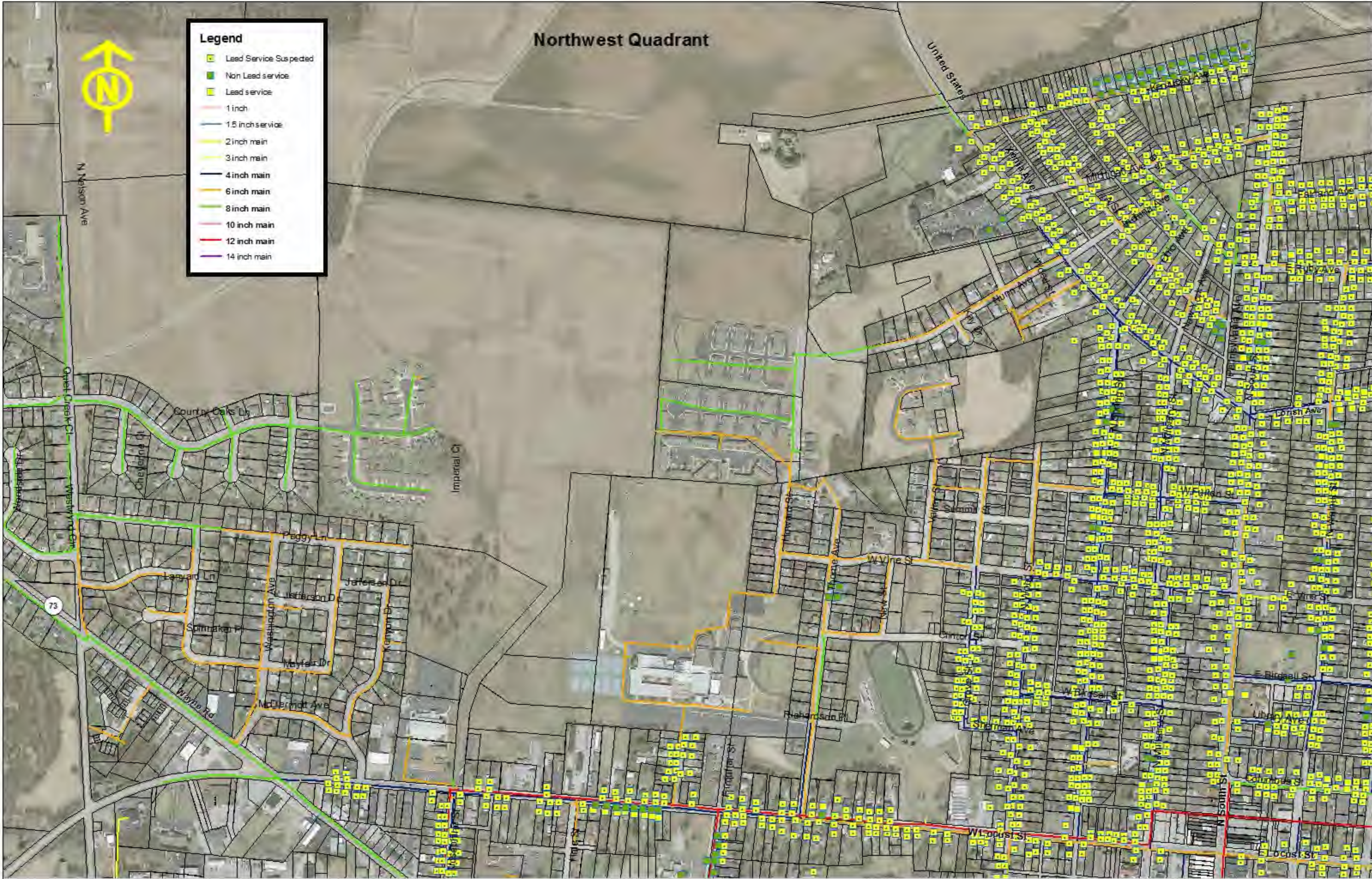


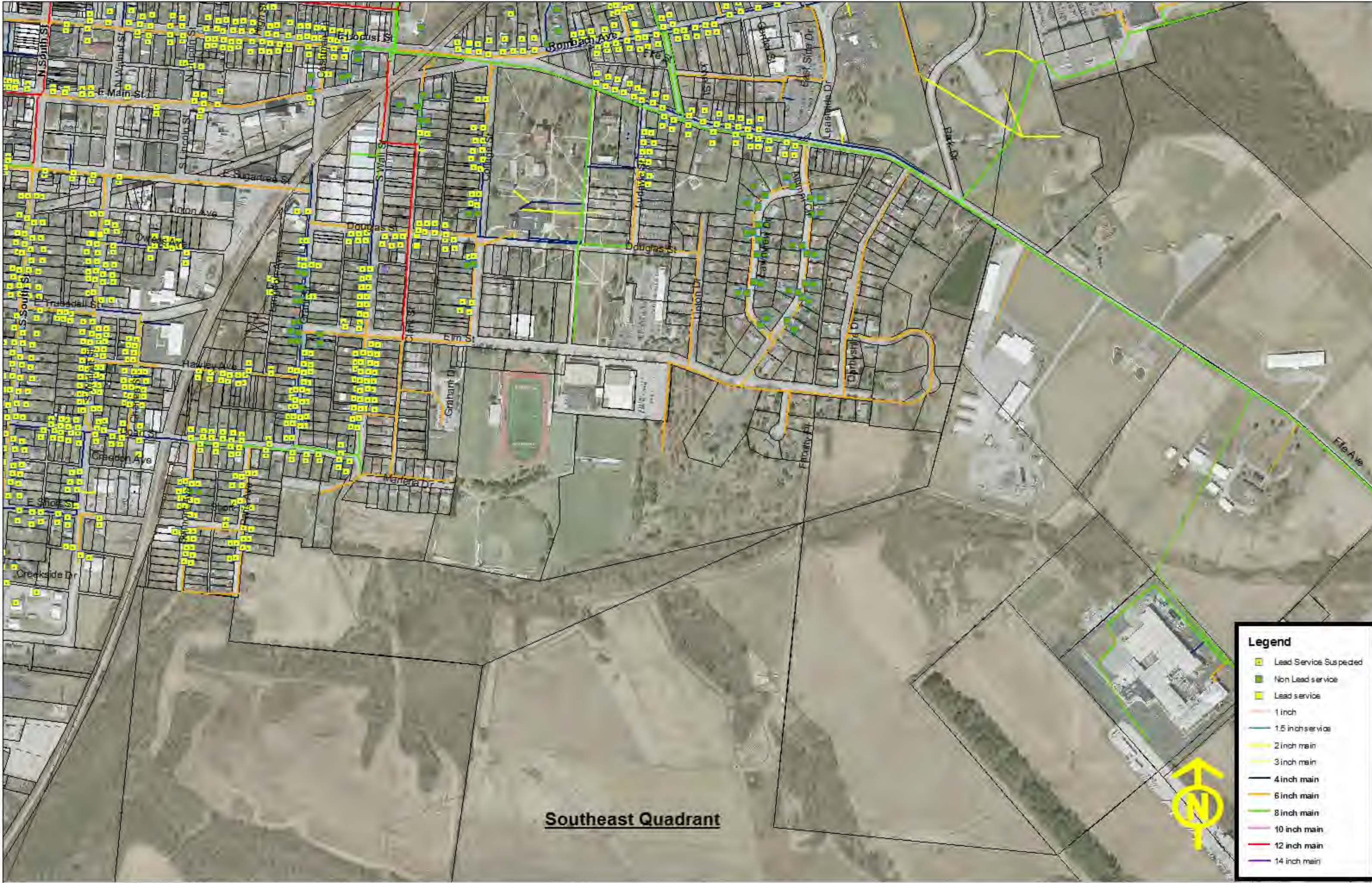
Northwest Quadrant



Legend

- Lead Service Suspected
- Non Lead service
- Lead service
- 1 inch
- 1.5 inch service
- 2 inch main
- 3 inch main
- 4 inch main
- 6 inch main
- 8 inch main
- 10 inch main
- 12 inch main
- 14 inch main





Southwest Quadrant

Legend

-  Lead Service Suspected
-  Non Lead service
-  Lead service
-  1 inch
-  1.5 inch service
-  2 inch main
-  3 inch main
-  4 inch main
-  6 inch main
-  8 inch main
-  10 inch main
-  12 inch main
-  14 inch main





Description of Buildings served by the City of Wilmington Water System likely to contain lead solder and leaded fixtures

In 1986 The Safe Drinking Water Act banned the use of solder containing more than 0.2% lead content for use on joining copper and brass plumbing pipe and fixtures. The SDWA lead solder ban provision did not become effective in the Ohio Plumbing Code until March 30, 1998 (according to the Ohio EPA's "New Lead and Copper Requirements" guidance document 1/17/2017). We are to assume that any commercial, industrial and residential building construction that took place after 1998 should not contain any plumbing materials greater than 8% lead in their plumbing materials and fixtures.

Later in 2014, plumbing material and fixture manufacturers were required to lower the lead content in plumbing components and meters to 0.25% lead by weight to further reduce lead exposure in drinking water.

It was also noted in the guidance document that; although prohibited, some use of lead solder or leaded components may have occurred after the prohibitions became effective.

The attached water distribution map has areas of the City of Wilmington that were constructed before the year 1998, these highlighted areas of the map most likely contain a higher content of lead solder and plumbing fixtures. Also included in the map are buildings built after 1998 and 2014. Please refer to the map legend to identify the highlighted areas.