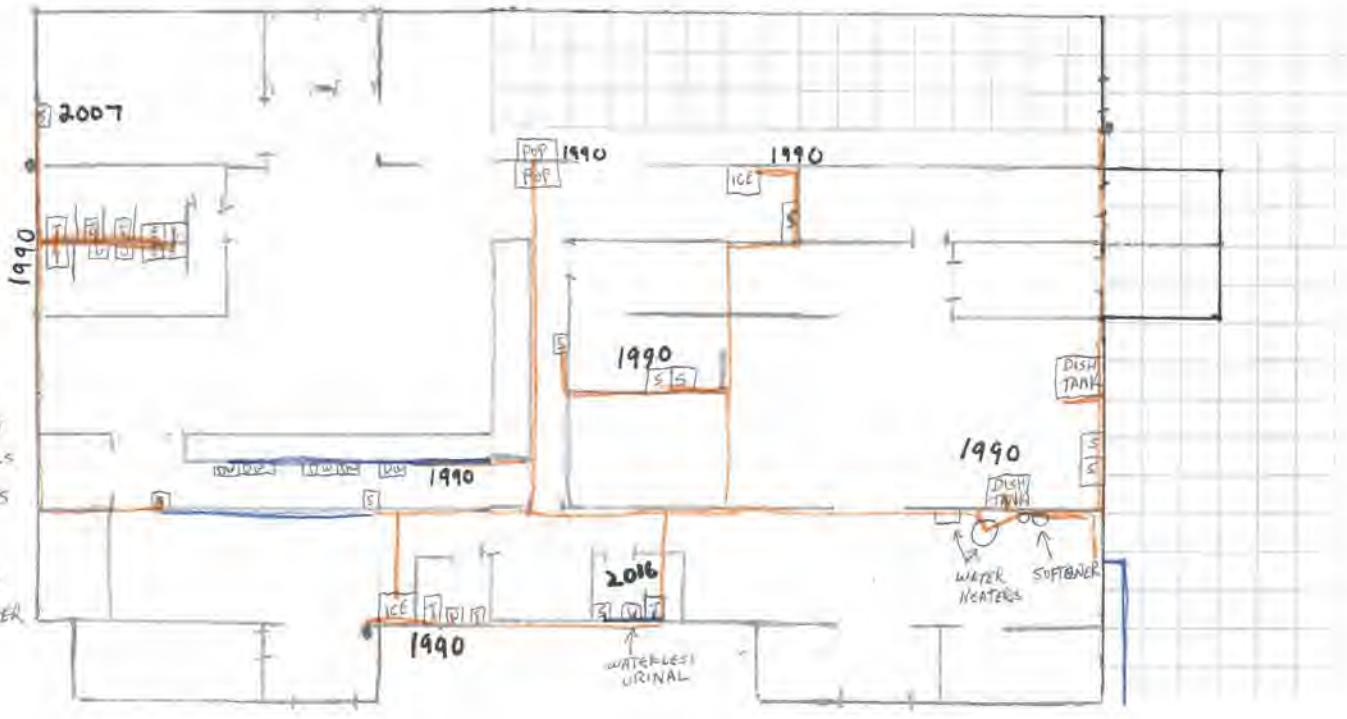
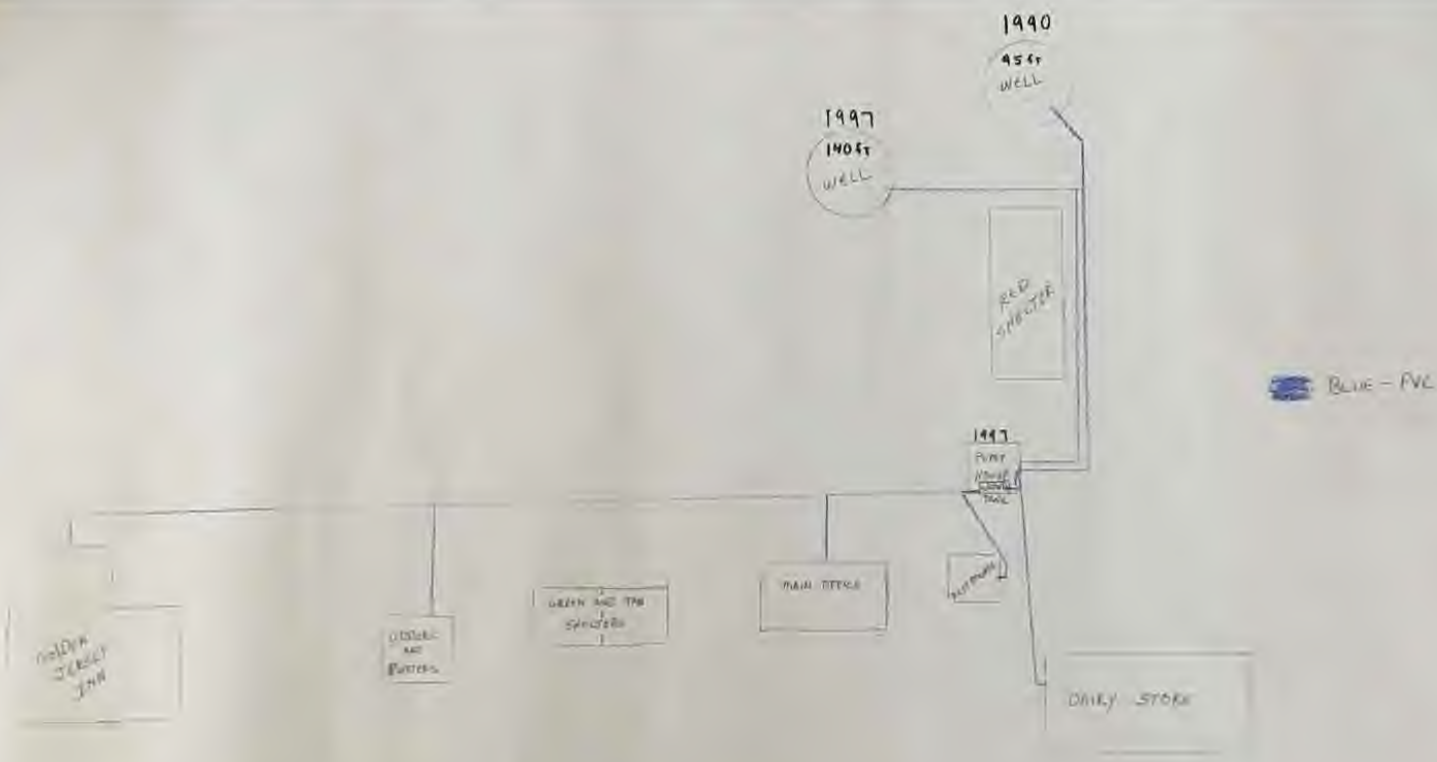


DAIRY STORE

- S - SINKS
- T - TOILETS
- U - URINALS
- DW - DEF WELLS
- - FAUCETS

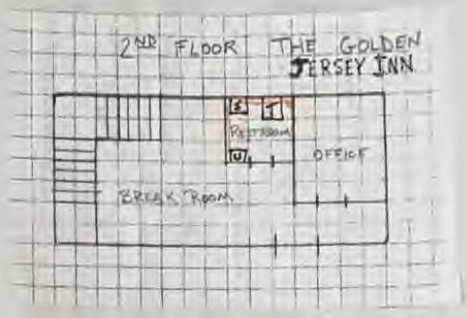
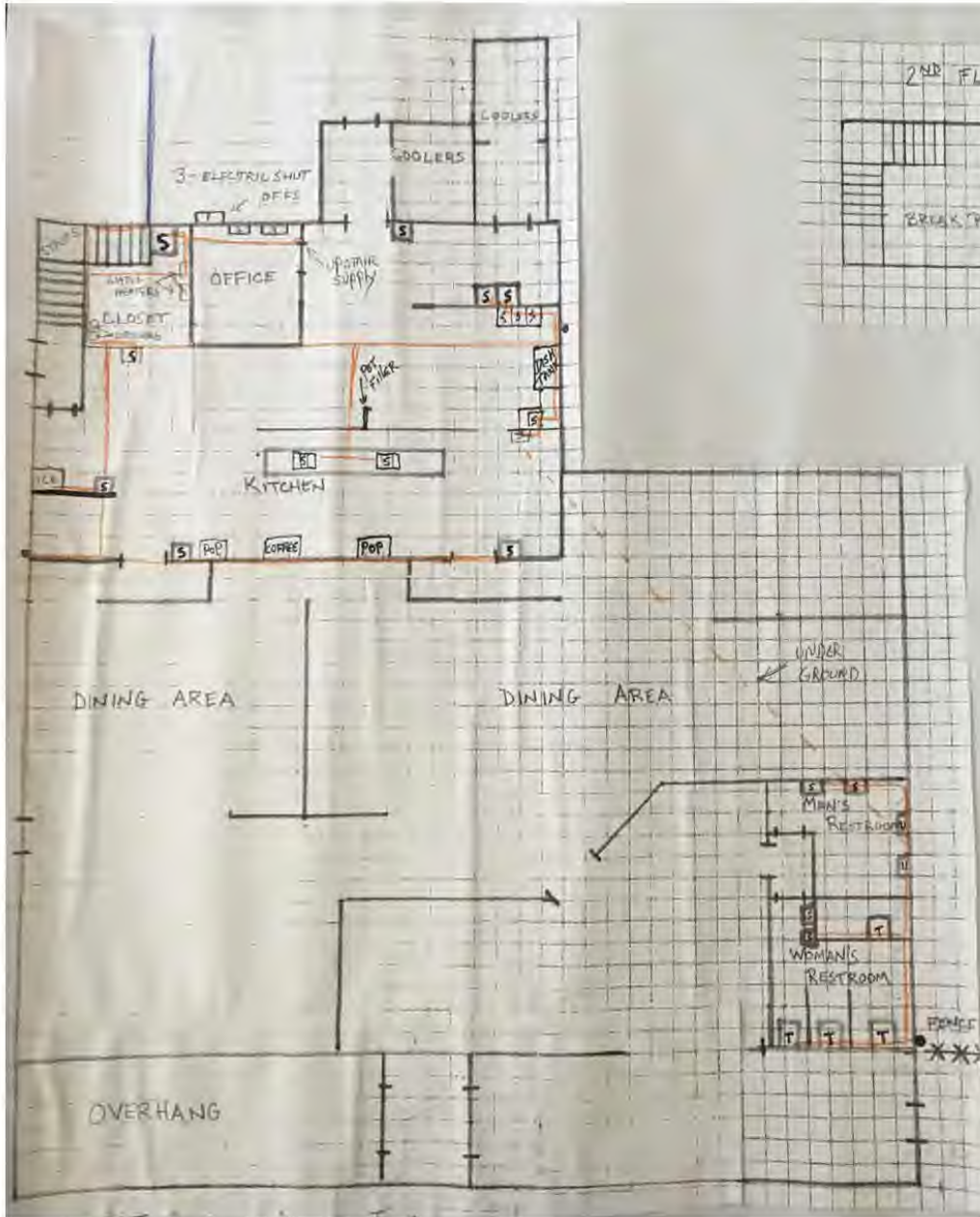
BLUE - P.V.C  
ORANGE - COPPER





Young's Jersey Dairy  
 SPRINGFIELD - XENIA ROAD

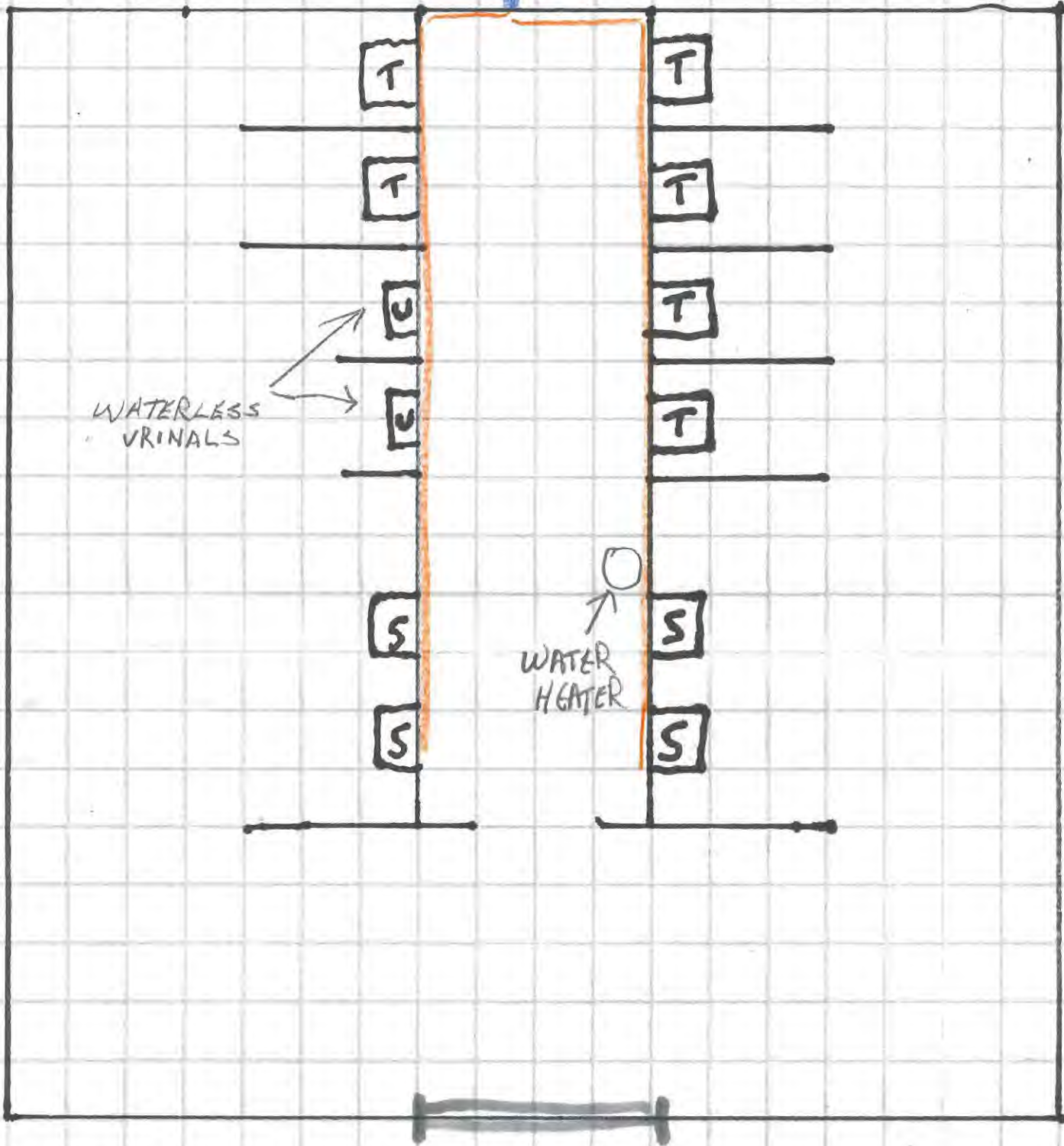




- S - SINKS
- T - TOILETS
- U - URINALS
- DW - DW WALLS
- - FAUCETS
- - PVC
- - COPPER
- UNDER GROUND

1997 Plumbing

NEW RESTROOMS



2014

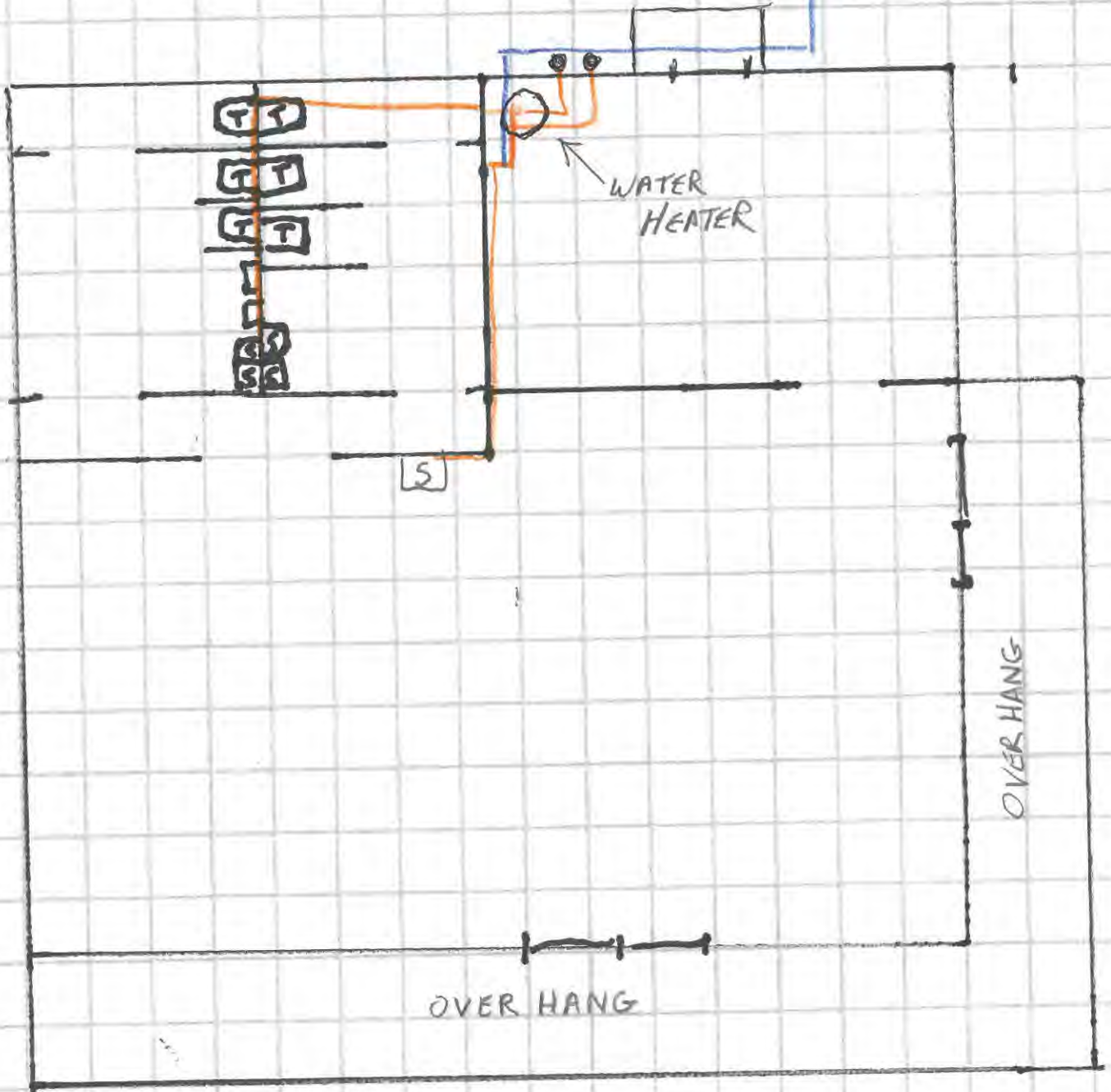
Plumbing Installed

- S - SINKS
- T - TOILETS
- U - URINALS

BLUE - PVC

ORANGE - COPPER

# UDDERS AND PUTTERS



1993  
PLUMBING

- S - SINKS
- T - TOILETS
- U - URINALS
- - FAUCETS

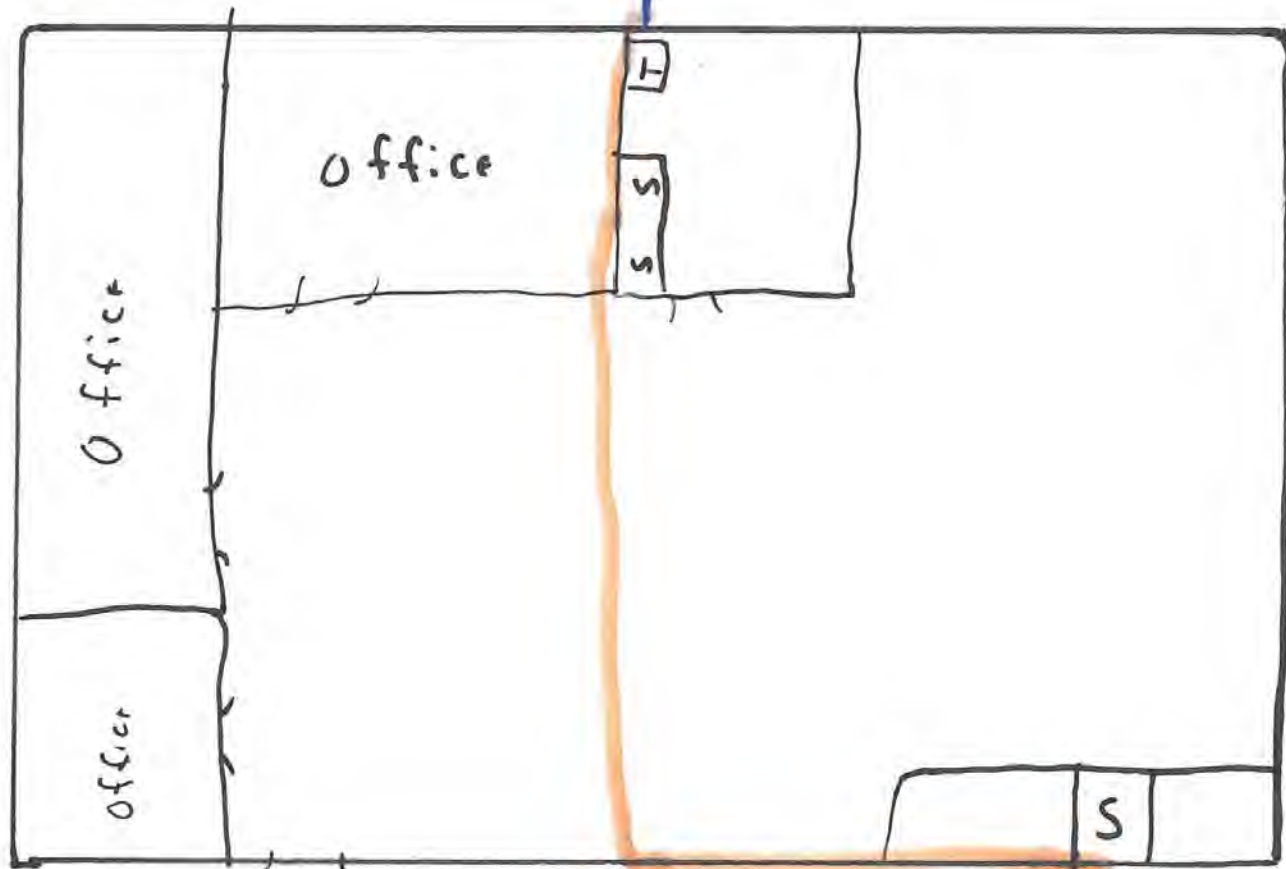
- BLUE - PVC
- ORANGE - COPPER

Young's Jersey Dairy  
6880 Springfield-Xenia Road  
Yellow Springs, OH 45387

#### Lead Mapping Narrative

- A. The main service lines, from the wells to the distribution points are all PVC and were installed in the 1990's
- B. There is a 2,000 gallon storage tank where the water is treated with chlorine, and then distributed to the rest of the property
- C. In each building we have copper or PVC pipes only
  - a. Dairy Store – original building in 1968
    - i. Major addition in 1990
  - b. The Golden Jersey Inn – built in 1997
- D. There are two wells that supply our system, alternating in demand
  - a. The water goes to the chlorine treatment tank, then to the buildings
  - b. One well was constructed in 1990, the other in 1997
- E. All maps have a key indicated
  - a. S – Sinks
  - b. T- Toilets
  - c. U – Urinals
  - d. DW – Dipwells
  - e. Blue on the map = PVC
  - f. Orange on the map = Copper
- F. With the exception of the map labeled 'New Restrooms', all plumbing and fixtures were installed prior to 2014. Solder used for copper lines, and fixtures installed prior to 2014 potentially contain lead.

T = toilet  
S = Sink



1968  
Office Building