

Please add the following information to our submission files for:

Possum North Well
Possum South Well

Because it is practically impossible to determine the lead content of an installed fixture, fitting or pipe, it should be assumed that the manufacture or installation date is the primary indicator of the lead content. Therefore, the characteristics of buildings and piping solder or fixtures would be buildings in Ohio built prior to 1998 or that use plumbing material or solder manufactured before 1998 may have materials with greater than 8% lead and are at a higher risk of contributing lead to the drinking water than materials manufactured after 1998. In addition, buildings built and plumbing materials manufactured after 2014 were required to have less than 0.25% lead by weight and have the lowest risk for contributing lead to the drinking water. It should be noted however that, although prohibited, some use of leaded solder or leaded components may have occurred after the prohibitions.

~Brian Kuhn

Brian Kuhn
Assistant Superintendent
Clark-Shawnee Local Schools
937-328-5378

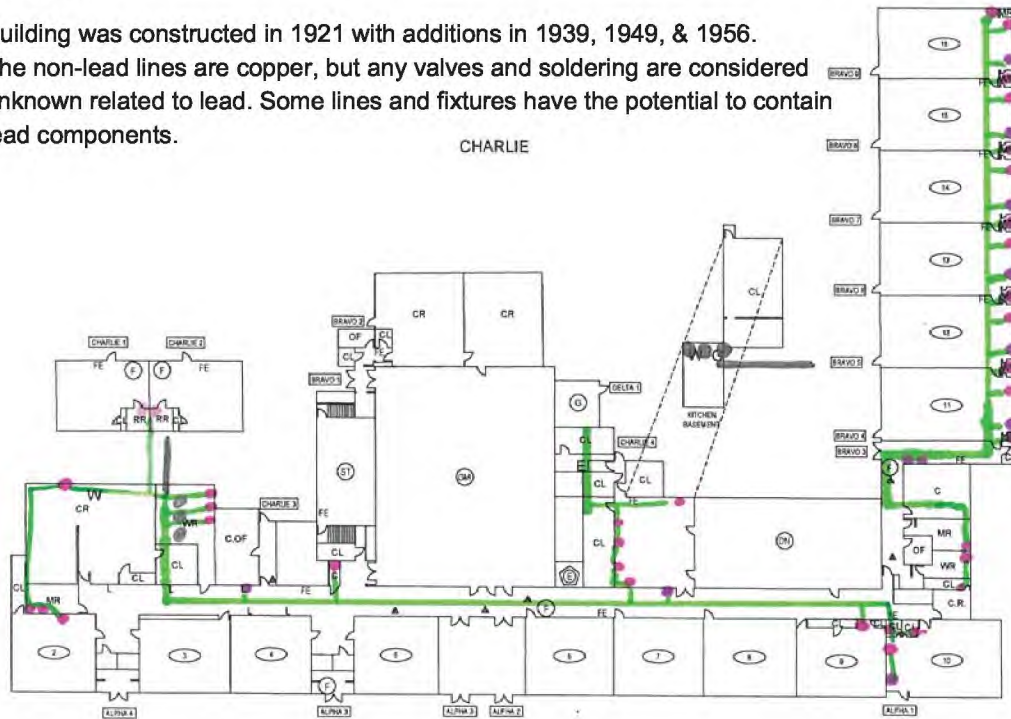
IRN# ELEMENTARY- 030593
MIDDLE- 012566

POSSUM ELEMENTARY AND MIDDLE SCHOOL FIRST FLOOR

Building was constructed in 1921 with additions in 1939, 1949, & 1956.
The non-lead lines are copper, but any valves and soldering are considered unknown related to lead. Some lines and fixtures have the potential to contain lead components.

CHARLIE

BRAVO



● - Sink
● - Water Fountain
● - Lead
● - Non-Lead
● - NO Information

DELTA

ALPHA



POSSUM ELEMENTARY AND MIDDLE SCHOOL KEY:
 MR - MEN'S RESTROOM
 SMR - STAFF MEN'S RESTROOM
 WR - WOMEN'S RESTROOM
 SWR - STAFF WOMEN'S RESTROOM
 WLR - WOMEN'S LOCKER ROOM
 RR - UNISEX RESTROOM
 SR - UNISEX STAFF RESTROOM
 AV - AUDIO VISUAL ROOM
 C - CUSTODIAL
 C.O.F. - CONFERENCE OFFICE
 C.R. - CONFERENCE ROOM
 CR - CLASS ROOM
 DR - DASH ROOM
 OF - OFFICE
 E - ELEVATOR
 CL - CLOSET / STORAGE AREA
 M - MECHANICAL ROOM

LEGEND:

CRITICAL

- (A) LOCATION OF EXISTING
- (E) ELECTRICAL SHUTOFF
- (F) FIRE HYDRANTS
- (F) FIRE ALARM PANEL
- (G) GAS SHUT OFF
- (K) KNOX BOX
- (S) SPRINKLER SHUTOFF
- (W) WATER SHUTOFF

NON-CRITICAL

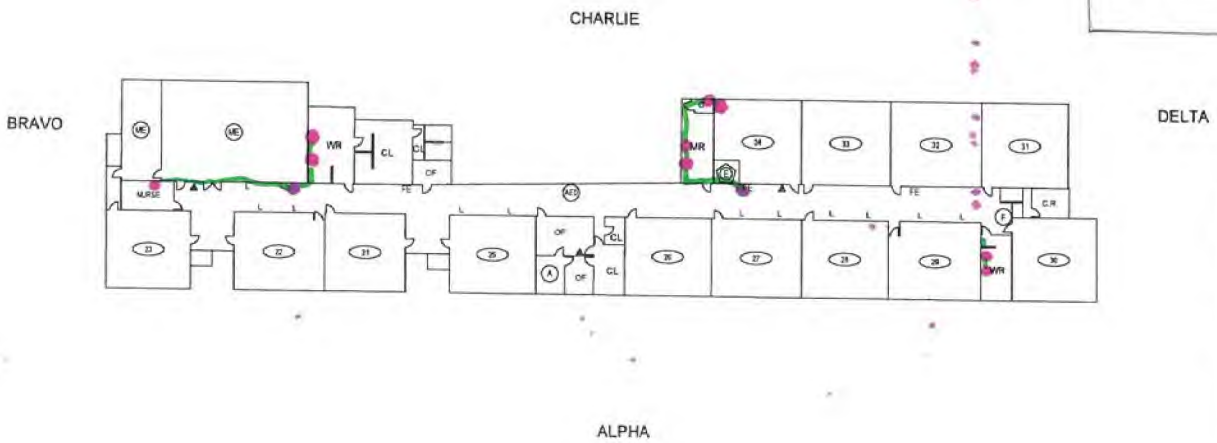
- (A) ADMINISTRATIVE SUITE
- (R) AREA OF REFUGE
- (C) CAMERA
- (COR) CORRIDOR
- (E) ELEVATOR
- (EXT) EXTERIOR DOORS
- (FE) FIRE EXTINGUISHER
- (P) LOCATION OF BLUEPRINT
- (RA) ROOF ACCESS POINT
- (RM) ROOM NUMBER
- (SM) SECURITY MONITORING ACCESS CONTROL
- (SET) SERVICE ENTRANCE

POSSUM ELEMENTARY AND MIDDLE SCHOOL
2589 S YELLOW SPRINGS S
SPRINGFIELD, OHIO 45508
(937) 328-5383

IRN# ELEMENTARY- 030593
MIDDLE- 012566

POSSUM ELEMENTARY AND MIDDLE SCHOOL SECOND FLOOR

Building was constructed in 1921 with additions in 1939, 1949, & 1956.
The non-lead lines are copper, but any valves and soldering are considered unknown related to lead. Some lines and fixtures have the potential to contain lead components.



- (ME) LOCATION OF EXISTING ELECTRICAL SHUT/OFF
- (E) ELECTRICAL SHUT/OFF
- (FH) FIRE HYDRANTS
- (F) FIRE ALARM PANEL
- (G) GAS SHUT OFF
- (K) KNOX BOX
- (S) SPRINKLER SHUT/OFF
- (W) WATER SHUT/OFF
- (A) ADMINISTRATIVE SUITE
- (R) AREA OF REFUGE
- (C) CAMERA
- (COR) CORRIDOR
- (E) ELEVATOR
- (EXT) EXTERIOR DOORS
- (FE) FIRE EXTINGUISHER
- (P) LOCATION OF BLUEPRINT
- (RA) ROOF ACCESS POINT
- (R) ROOM NUMBER
- (SM) SECURITY MONITORING ACCESS CONTROL
- (SE) SERVICE ENTRANCE

- (D) DINING
 - (GYM) GYMNASIUM
 - (M) MEDIA
 - (ST) STAGE
- POSSUM ELEMENTARY AND MIDDLE SCHOOL**
2589 S YELLOW SPRINGS ST
SPRINGFIELD, OHIO 45506
(937) 328-5383
FACILITY SAFETY PLAN

