


City of Sidney

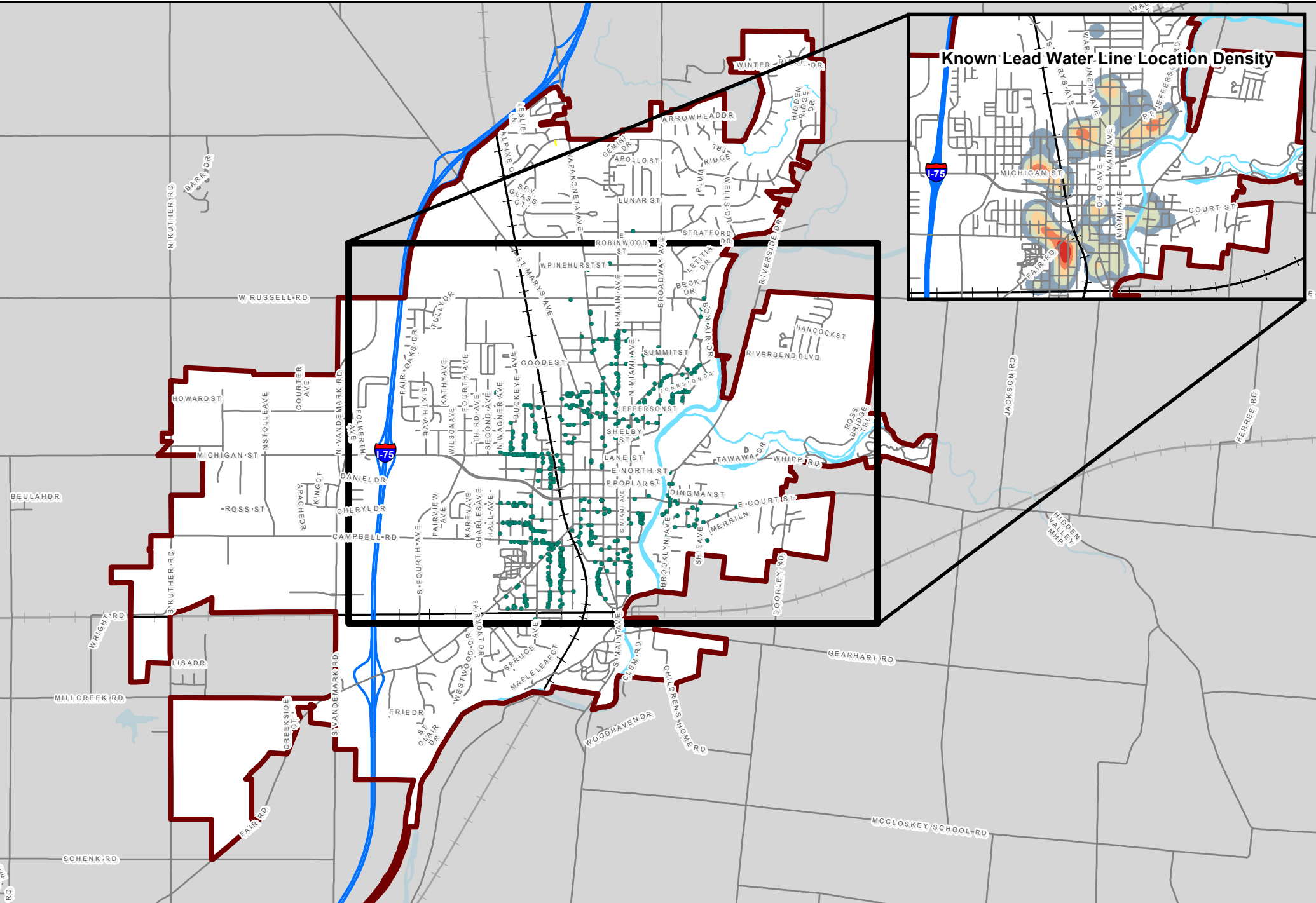
Service Connection Material Mapping Information City of Sidney Utilities Department

In June 2016, HB 512 was passed to enact section 6109.121 of the Ohio Revised Code (ORC) to establish requirements governing lead and copper testing for community and nontransient noncommunity public water systems and to revise law governing lead contamination from plumbing and fixtures. The law requires community water systems to identify and map areas of their distribution systems that are known or likely to contain lead service lines. These systems are also required to identify and provide a description of the characteristics of buildings served by the system that may contain lead solder, fixtures or pipes..

In accordance to the new rule, the City of Sidney has identified service connections throughout the service area that are known or likely to contain lead. The City of Sidney has worked diligently to best identify the multiple piping materials used throughout our water distribution system. The City of Sidney utilized a combination of field observance, regulatory code changes, historical permit records, utility billing records, and maintenance records to identify areas that are known or likely to contain lead service lines, lead solder, or fixtures. The City of Sidney has developed a lead service line identification and replacement program in effort to locate and remove these lines from within our distribution system in an efficient manner. Through this program, we plan to update our maps annually as further information is obtained.

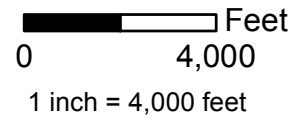
GIS Mapping Key:

-  = Known Lead Service Connections
-  = Potential Lead Service Connections
-  = Pre 1998 Copper Service Connections
-  = Post 1998 Copper Service Connections
-  = Pre 1998 Ductile Service Connections
-  = Pre 1998 Cast Service Connections
-  = Known Plastic Service Connections
-  = Unknown Service Connections



Known Lead Water Lines: City of Sidney, OH

- Known Lead Water Line
- Interstate 75
- Roads
- Railroad
- Rivers & Lakes
- Sidney Corporation limits
- Known Lead Location Density**
- 0 - 400
- 400.01 - 600
- 600.01 - 800
- 800.01 - 1,000
- 1,000.01 - 1,244.15



This product was produced for mapping purposes only. No warranty, expressed or implied, is made regarding suitability for legal, surveying or engineering purposes.

September 20, 2016

Known and Potential Lead Water Lines

City of Sidney, OH

September 2016

● Known Lead Water Line

● Potential Lead Water Line

— Interstate 75

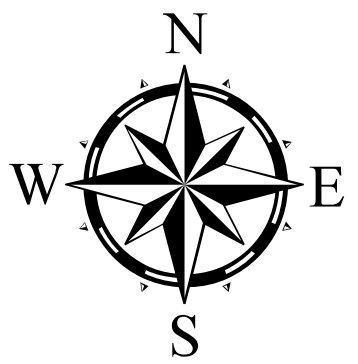
— Roads

— Railroad

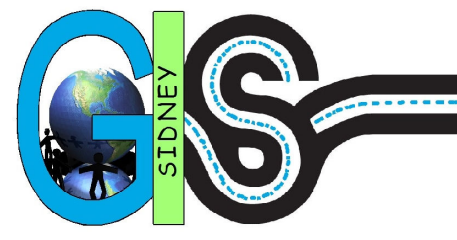
— Rivers & Lakes

— Parcel Boundaries

— Sidney Corporation limits



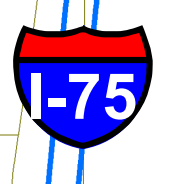
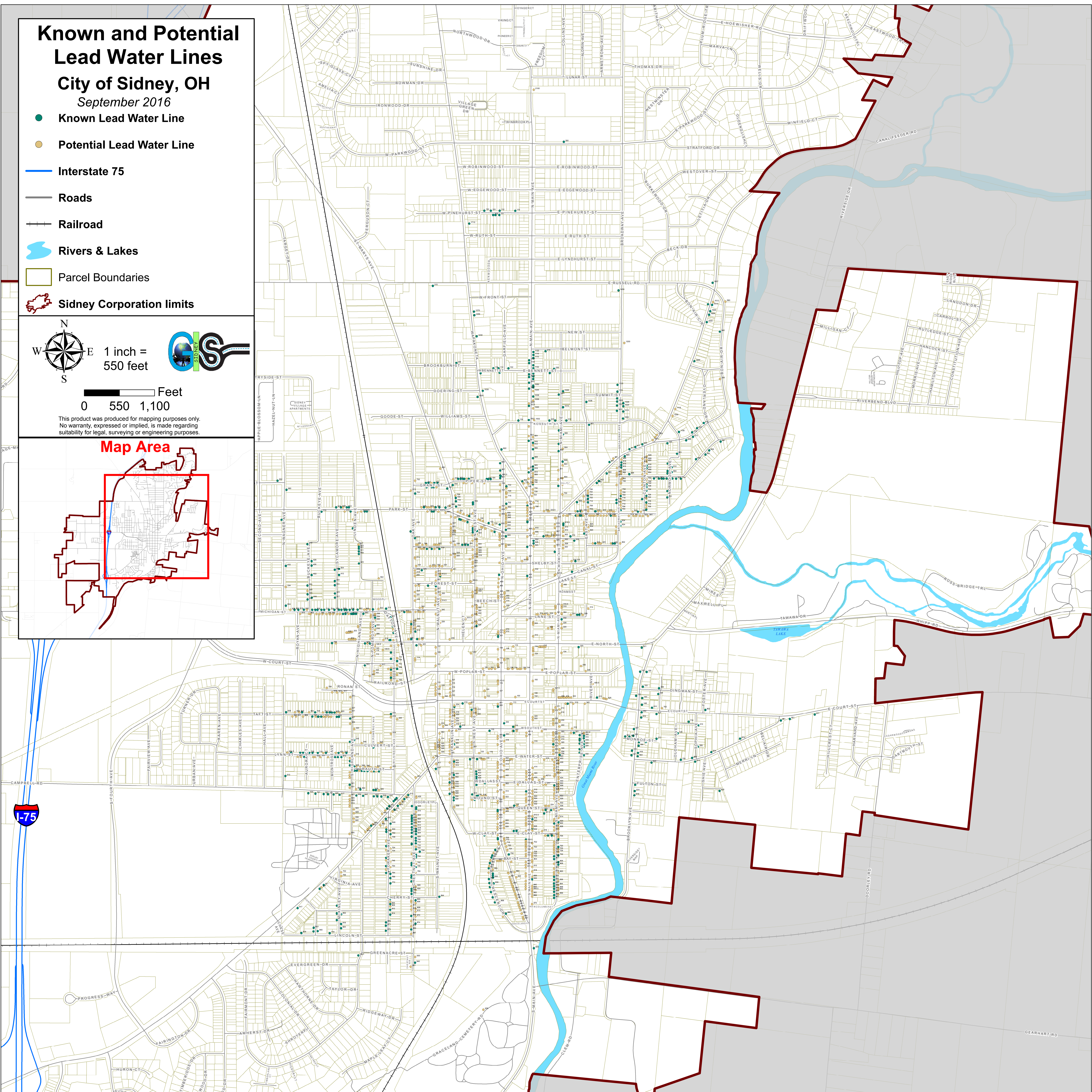
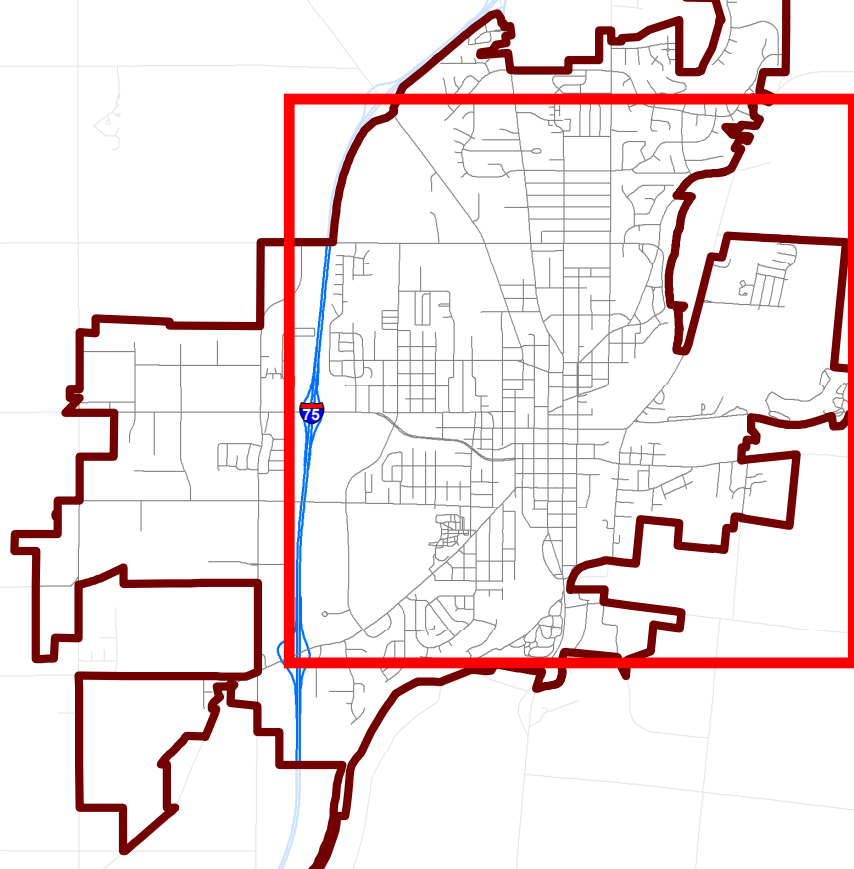
1 inch = 550 feet

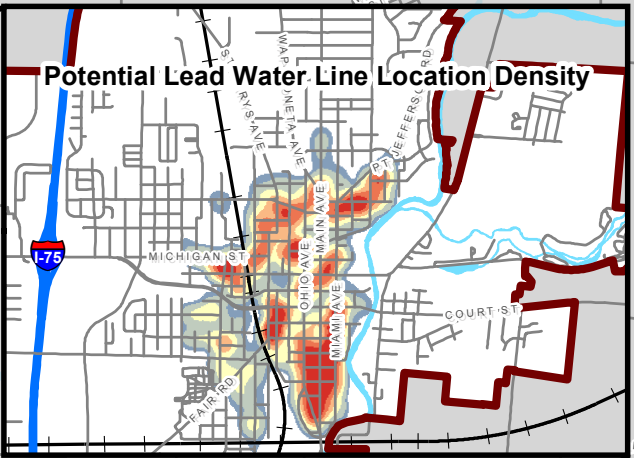
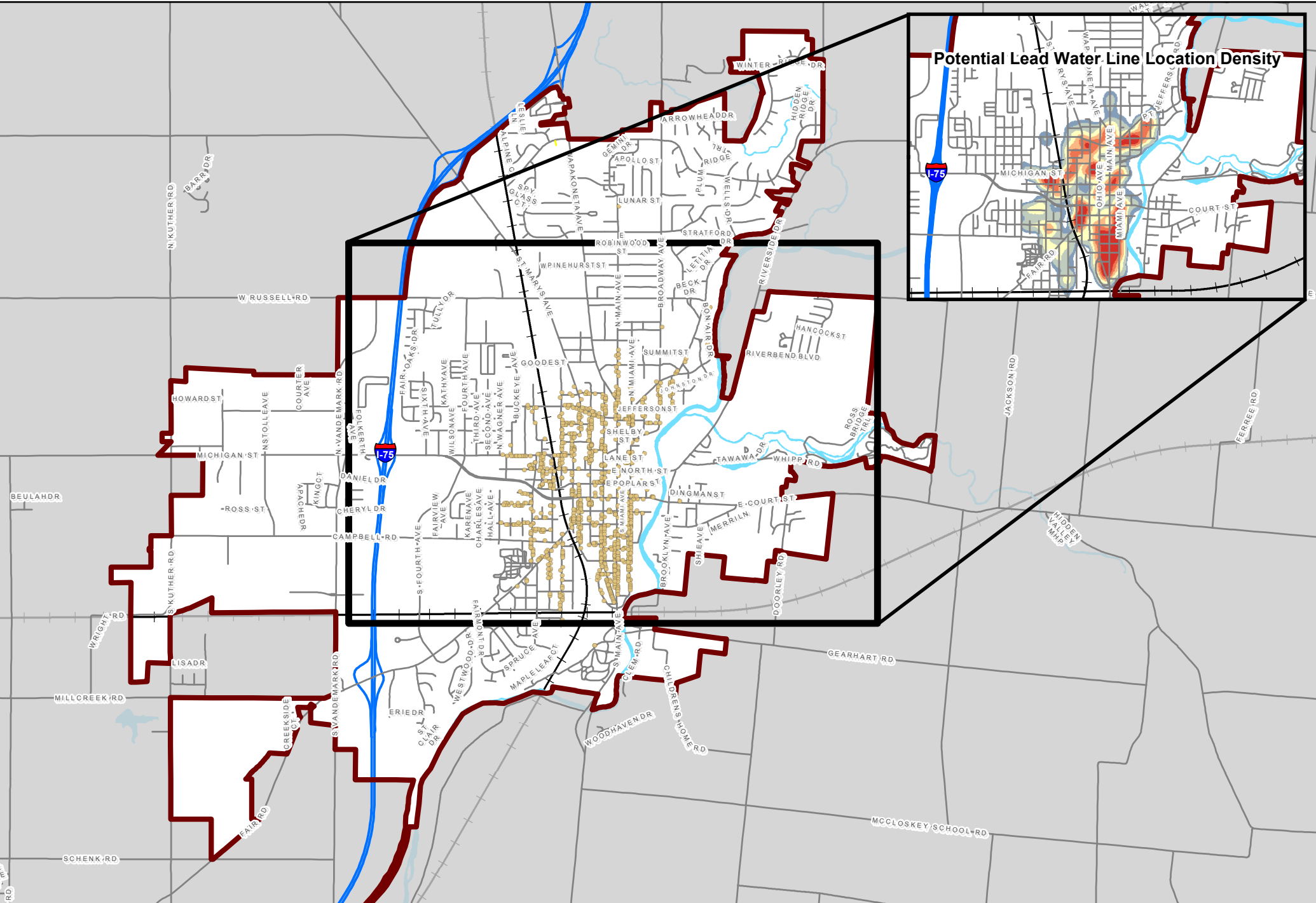


0 550 1,100 Feet

This product was produced for mapping purposes only. No warranty, expressed or implied, is made regarding suitability for legal, surveying or engineering purposes.

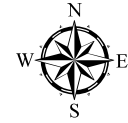
Map Area





Potential Lead Water Lines: City of Sidney, OH

- Potential Lead Water Line
- Interstate 75
- Roads
- Railroad
- Rivers & Lakes
- Sidney Corporation limits
- Potential Lead Location Density**
- 0 - 400
- 400.01 - 800
- 800.01 - 1,200
- 1,200.01 - 1,600
- 1,600.01 - 2,000
- 2,000.01 - 3,047.68



0 4,000 Feet
1 inch = 4,000 feet



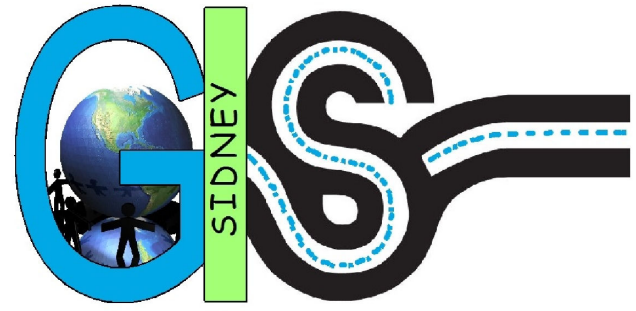
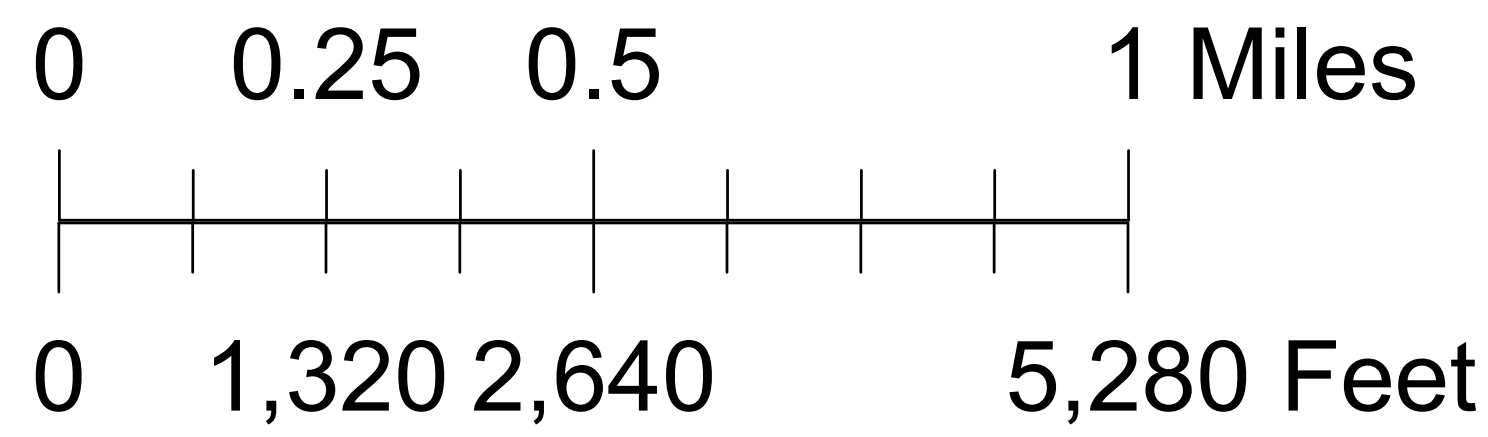
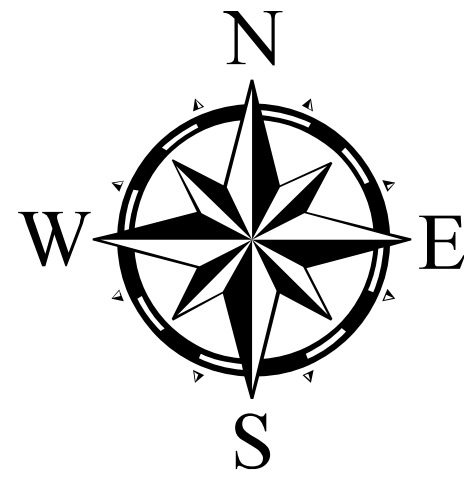
This product was produced for mapping purposes only. No warranty, expressed or implied, is made regarding suitability for legal, surveying or engineering purposes.

September 20, 2016

City of Sidney, OH: Water Treatment Plant PWS OH7501214

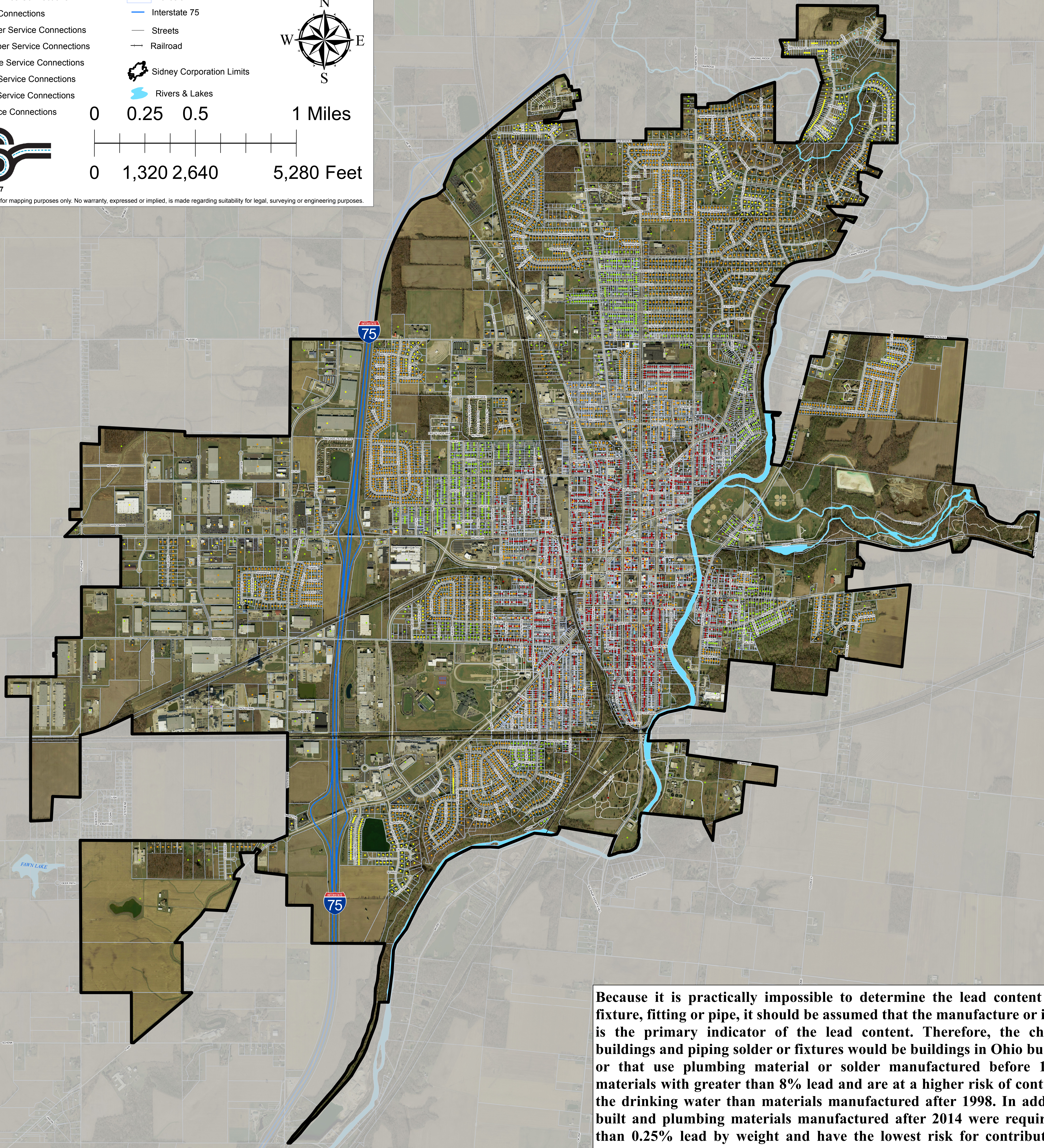
- Known Lead Service Connections
- Potential Lead Connections
- Pre 1998 Copper Service Connections
- Post 1998 Copper Service Connections
- Pre 1998 Ductile Service Connections
- Pre 1998 Cast Service Connections
- Known Plastic Service Connections
- Unknown Service Connections

- ▭ Parcels
- Interstate 75
- Streets
- Railroad
- ⬮ Sidney Corporation Limits
- Rivers & Lakes



February 24, 2017

This product was produced for mapping purposes only. No warranty, expressed or implied, is made regarding suitability for legal, surveying or engineering purposes.



Because it is practically impossible to determine the lead content of an installed fixture, fitting or pipe, it should be assumed that the manufacture or installation date is the primary indicator of the lead content. Therefore, the characteristics of buildings and piping solder or fixtures would be buildings in Ohio built prior to 1998 or that use plumbing material or solder manufactured before 1998 may have materials with greater than 8% lead and are at a higher risk of contributing lead to the drinking water than materials manufactured after 1998. In addition, buildings built and plumbing materials manufactured after 2014 were required to have less than 0.25% lead by weight and have the lowest risk for contributing lead to the drinking water. It should be noted however that, although prohibited, some use of leaded solder or leaded components may have occurred after the prohibitions became effective.