

First Baptist Church of New Carlisle Day Care PWSID OH5552112
8870 State Route 571
New Carlisle, OH 45344 Miami County

Narrative for First Baptist Church of New Carlisle Day Care (OH5552112) Miami County

Physical Facility and Source Water

The First Baptist Church of New Carlisle Day Care (PWSID OH5552112) operates in a two-story wing of the First Baptist Church which was constructed in 1994 as an addition to the original church building that was built in 1960. The water system consists of one ground water wells and a water softener and bladder-type pressure tank. Because the church operates a Day Care facility, it became a Non Transient, Non Community public water supply.

Water Distribution System

The water line from the well comes into the building’s maintenance area on the south side of the original building (1960) through a one-inch K-copper pipe. From there, the water passes through a water softener and into a bladder tank to pressure maintain pressure. This map only depicts the water lines used by the Day Care students and staff, as the Day Cares only occupies and uses the facilities in the 1994 addition. There are also “over-flow” classrooms that are occasionally used in the original 1960 lower level. There are men and women’s restrooms in this area. These rooms are shown on the map as the “Day Care Extra Class” and the “Rainbow Room”. The remainder of the lower level (right side of map) has not been authorized for day care use.

The 1-inch K-copper water line was laid underground at a four foot depth and emerges into the building into a utility closet. Inside the building, the water is distributed in copper lines to the 1994 building addition in which the Day Care operates. The copper lines feature lead-free soldered connections. Each student classroom is plumbed with separate hot and cold taps with wash basins sink inside the classroom. These hot and cold taps are chrome plated brass of the “lead-free” (which may include up to 8% lead) variety. In the lower level hallway (classroom area) is a free standing drinking fountain. Also there are separate boys and girls restroom facilities. There are sampling sites (SMPs) located on this lower floor.

The upper level of the Day Care wing features a gymnasium, limited kitchen facility, men and women’s restrooms, and a drinking fountain. There are sampling sites (SMPs) located on this upper floor.

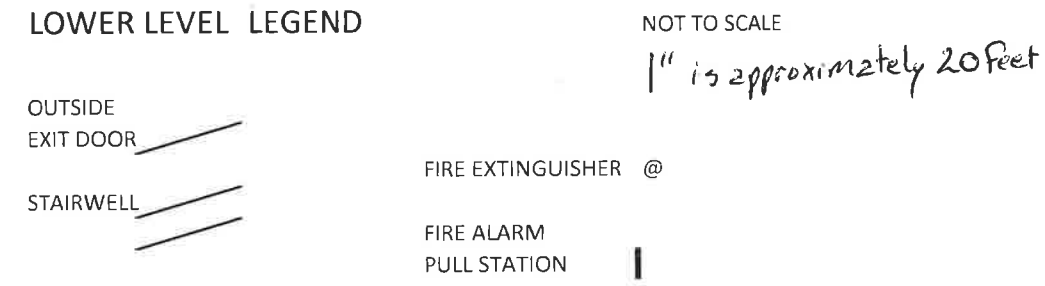
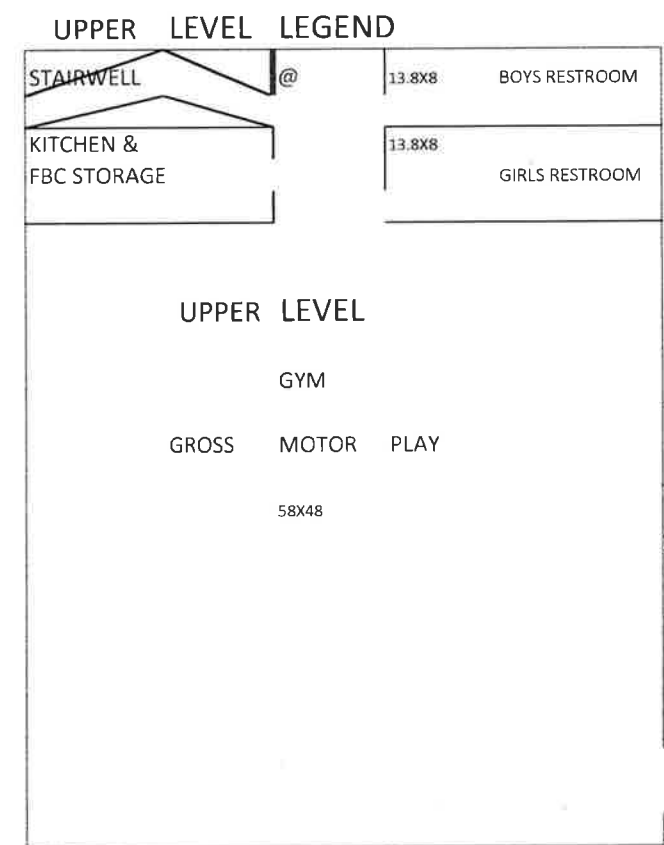
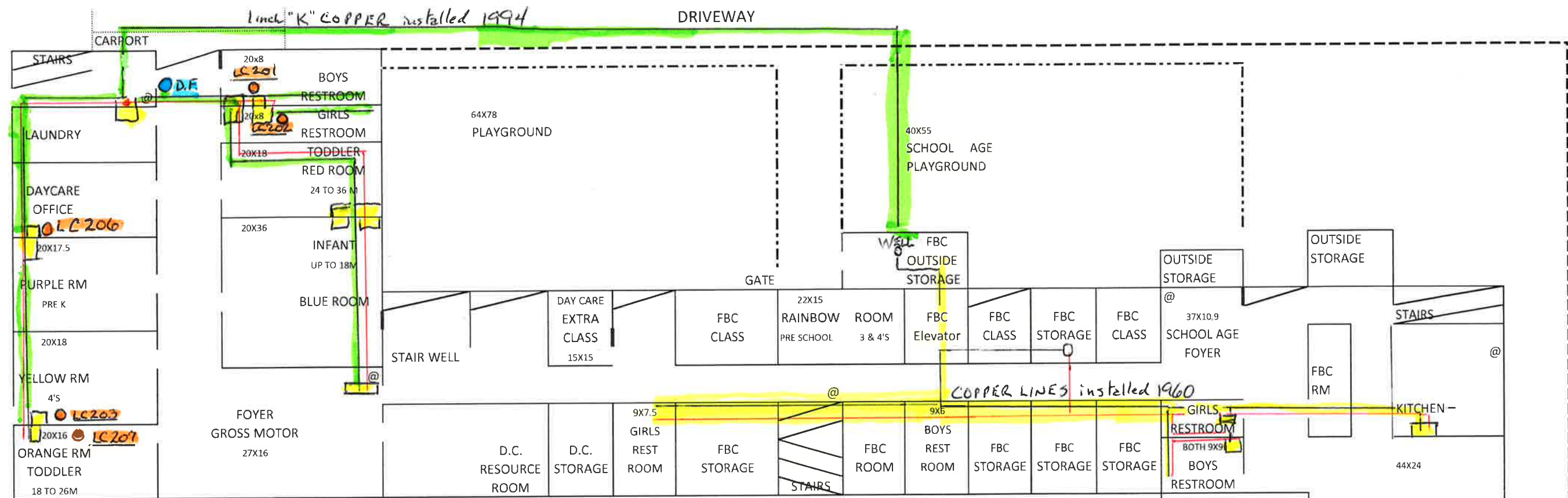
Map Legend: The color codes shown on the map are explained below:

1. Yellow: The hot and cold lines are highlighted in yellow to show potential fixtures and fittings that may have lead-containing components .
2. Green: Copper service lines in 1994 addition highlighted in green.
3. Black: Copper service lines (may be highlighted in yellow or green, based upon age).
4. Red: Water lines in red and highlighted in yellow are hot water lines.
5. Blue: Drinking fountains located outside the restrooms, one on each floor.
6. Orange: The lead and copper sampling sites (SMPs) are indicated by an orange dot with the newly assigned sampling identification numbers.
7. The map scale is one inch equals approximately 20 feet, but generally is not to scale. The individual rooms feature room dimensions in feet.

Sampling Sites:

The sites chosen for lead and copper sampling are shown on the map as an orange dot, along with the newly assigned sample numbers (e.g. LC201). A file has been attached showing the sampling locations.

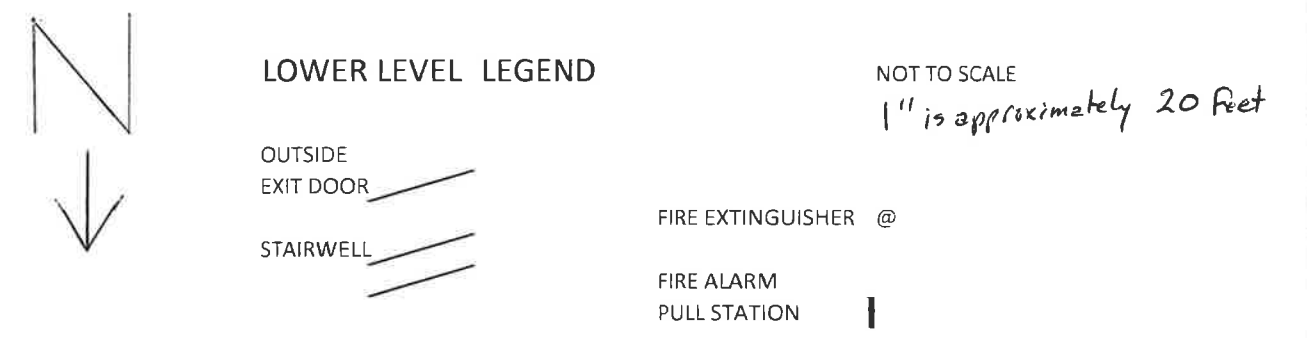
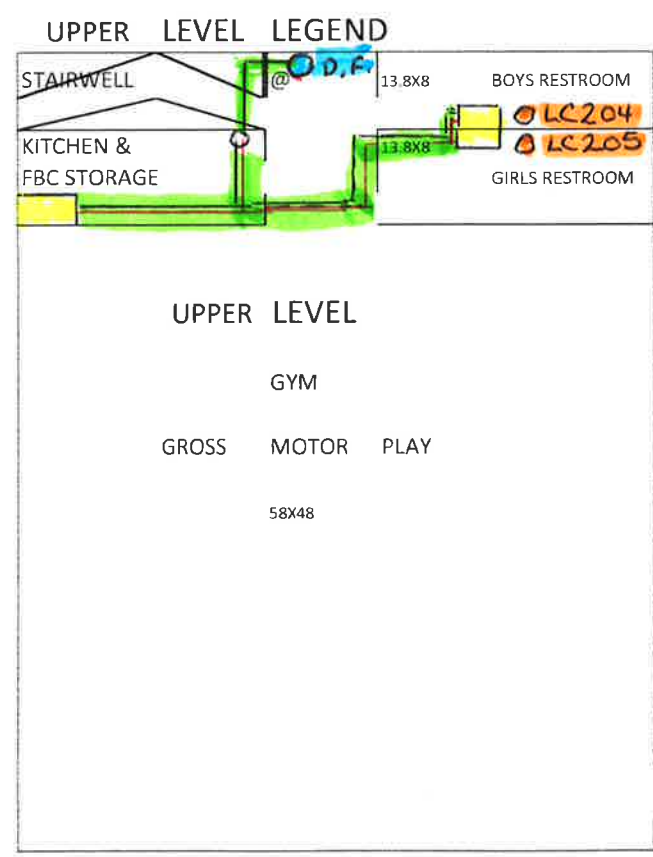
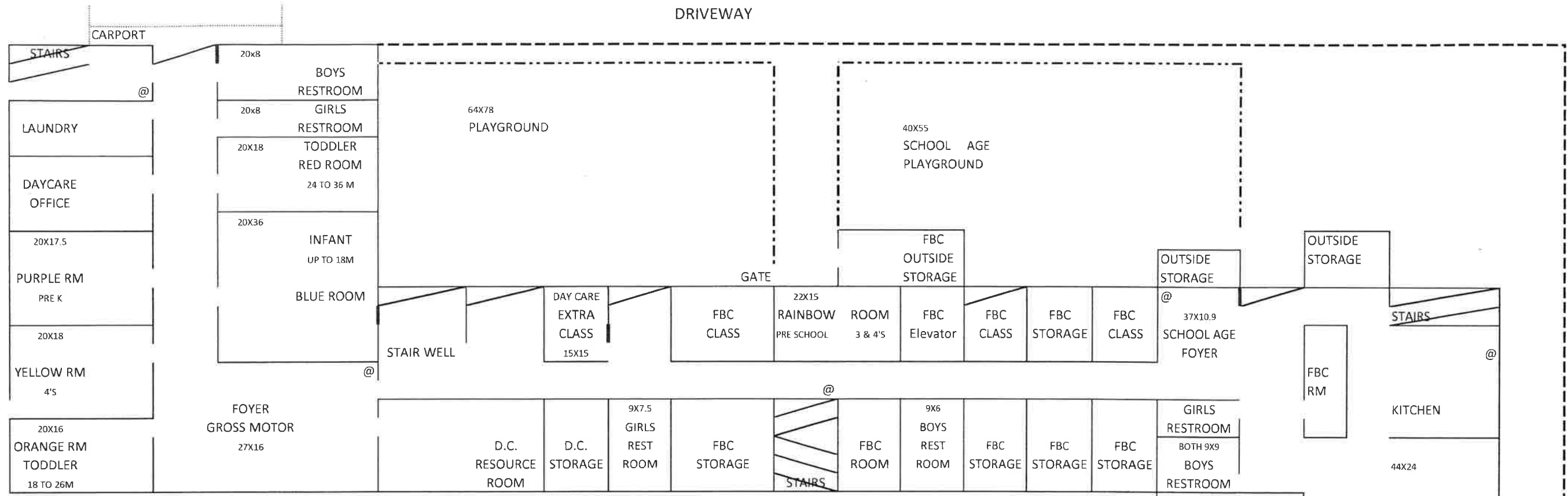
Because it is practically impossible to determine the lead content of an installed fixture, fitting or pipe, it should be assumed that the manufacture or installation date is the primary indicator of the lead content. Therefore, the characteristics of buildings and piping solder or fixtures would be buildings built prior to 1998 or that use plumbing material or solder manufactured before 1998 may have materials with greater than 8% lead and are at a higher risk of contributing lead to the drinking water than materials manufactured after 1998. In addition, buildings built and plumbing materials manufactured after 2014 were required to have less than 0.25% lead by weight and have the lowest risk for contributing lead to the drinking water. It should be noted however that, although prohibited, some use of leaded solder or leaded components may have occurred after the prohibitions became effective.



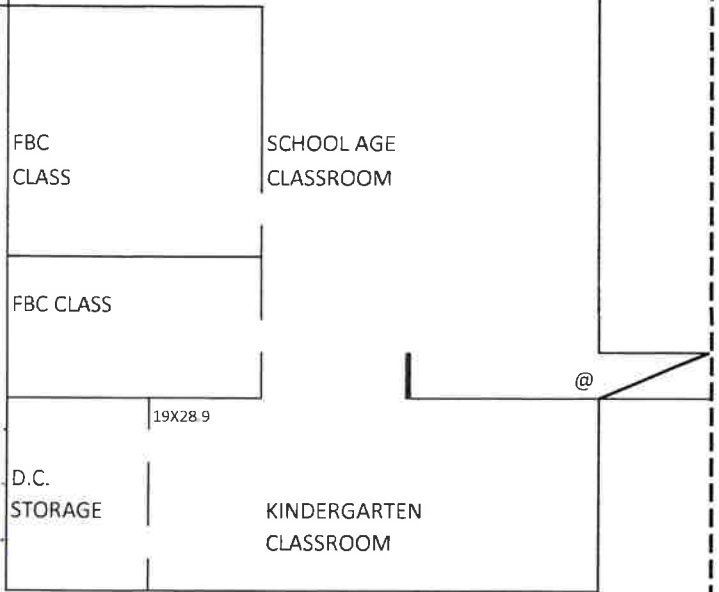
FIRST BAPTIST CHURCH OF NEW CARLISLE DAY CARE

- LOWER LEVEL PWSID: OH 5552112
- YELLOW - copper lines with lead-containing components - 1960 installation
 - YELLOW - Fixtures which may have lead-containing components
 - GREEN - 1994 K-Copper service line
 - BLUE - DRINKING FOUNTAIN ● DF
 - LEAD SAMPLING MONITORING POINT (SMP) ● LC201
 - RED - HOT WATER K-COPPER LINES

FIRST BAPTIST CHURCH OF NEW CARLISLE
8870 STATE RT. 571
NEW CARLISLE, OHIO 45344
MIAMI COUNTY



FIRST BAPTIST CHURCH OF NEW CARLISLE DAY CARE
UPPER LEVEL PWSID: OH5552112
 YELLOW - copper lines which may have lead-containing components
 YELLOW - Fixtures which may have lead-containing components
 GREEN - 1994 K-Copper service line
 BLUE - DRINKING FOUNTAIN @ D.F.
 LEAD SAMPLING MONITORING POINT (SMP) @ LC201
 RED - HOT WATER K-COPPER WATER LINES



FIRST BAPTIST CHURCH OF NEW CARLISLE
 8870 STATE ROUTE 571
 NEW CARLISLE, OH 45344
 MIAMI COUNTY