

Village of Dillonvale

Public Water System Lead (Pb) Components

PWSID# OH4100512
Prepared March 2017

To comply with Section 6109.21 of the Ohio Revised Code, enacted in September 2016, the Village of Dillonvale in Jefferson County, Ohio has created the following report and attached map to identify known and potential components of water service lines that contain lead (Pb).

The following information and attached map do not verify the presence of lead service lines (LSLs) in any of the structures shown. The information and map only show the probable or possible locations based on the year that structures were built, or by the year that the plumbing component was installed.

Public and Private LSL Probability

The Village owns and maintains service lines from the water distribution mains up to the curb stops for each water customer. The remainder of each service line from the curb stop to the building is the responsibility of the property owner.

The tables below provide information about the possibility of lead service lines and use of leaded plumbing materials to the customers Dillonvale serves. The year the structure was built, the year plumbing material was installed, or staff knowledge determines which category it falls into.

LSL Probability		
Value	Public Lines #	% of System
Public Non-Lead	485	100%
Public No Data	0	0%
Private Non-Lead	0	0%
Private No Data	485	100%

All active public service lines in Dillonvale are not lead. Current Dillonvale Water Department staff has never observed or replaced lead lines of any type in the distribution system. The majority of public lines are copper or plastic and are joined with solderless compression fittings.

Dillonvale Water Department has not seen any private LSLs during construction or replacement of water meters. The Village does not record the material or install dates of customer owned service lines. Since there is no data on private lines, Dillonvale is unsure if any private LSLs exist.



Distribution System

The Village of Dillonvale has approximately 7.8 miles of water main lines. Dillonvale recently had the entire system replaced. The table below shows which lines may or may not have solder, valves, or fittings that contain lead.

Probability of Lead Solder and Fittings in Water Main		
Lead in Water Main Materials	Feet of Pipe	% of System
Improbable (PVC)	41,047	100%
Probable	0	0%

Indoor Plumbing

Meters installed after 1998 may contain up to 8% lead. Meters installed after 2014 will have less than 0.25% lead.

Buildings in Ohio built prior to 1998 or that use plumbing material or solder manufactured before 1998 may have materials with greater than 8% lead and are at a higher risk of contributing lead to the drinking water than materials manufactured after 1998.

Buildings built and plumbing materials manufactured after 2014 were required to have less than 0.25% lead by weight and have the lowest risk for contributing lead to the drinking water. It should be noted however that, although prohibited, some use of leaded solder or leaded components may have occurred after the prohibitions became effective.

Customer Self-Reporting

The information on this map regarding privately owned service lines is based on the limited information from the water system staff and Jefferson County building and parcel data. Property owners are encouraged to inspect their own service lines entering the building if these are in anyway exposed, and notify the Village of Dillonvale Water Department if they have determined whether or not a lead service line exists. Please contact the Water Billing Clerk by calling (740)-769-2668 or by email at dillonvale_vil_2340@yahoo.com. A representative from the water department will contact you to confirm and update this information for the next map release.

Contacts and Resources

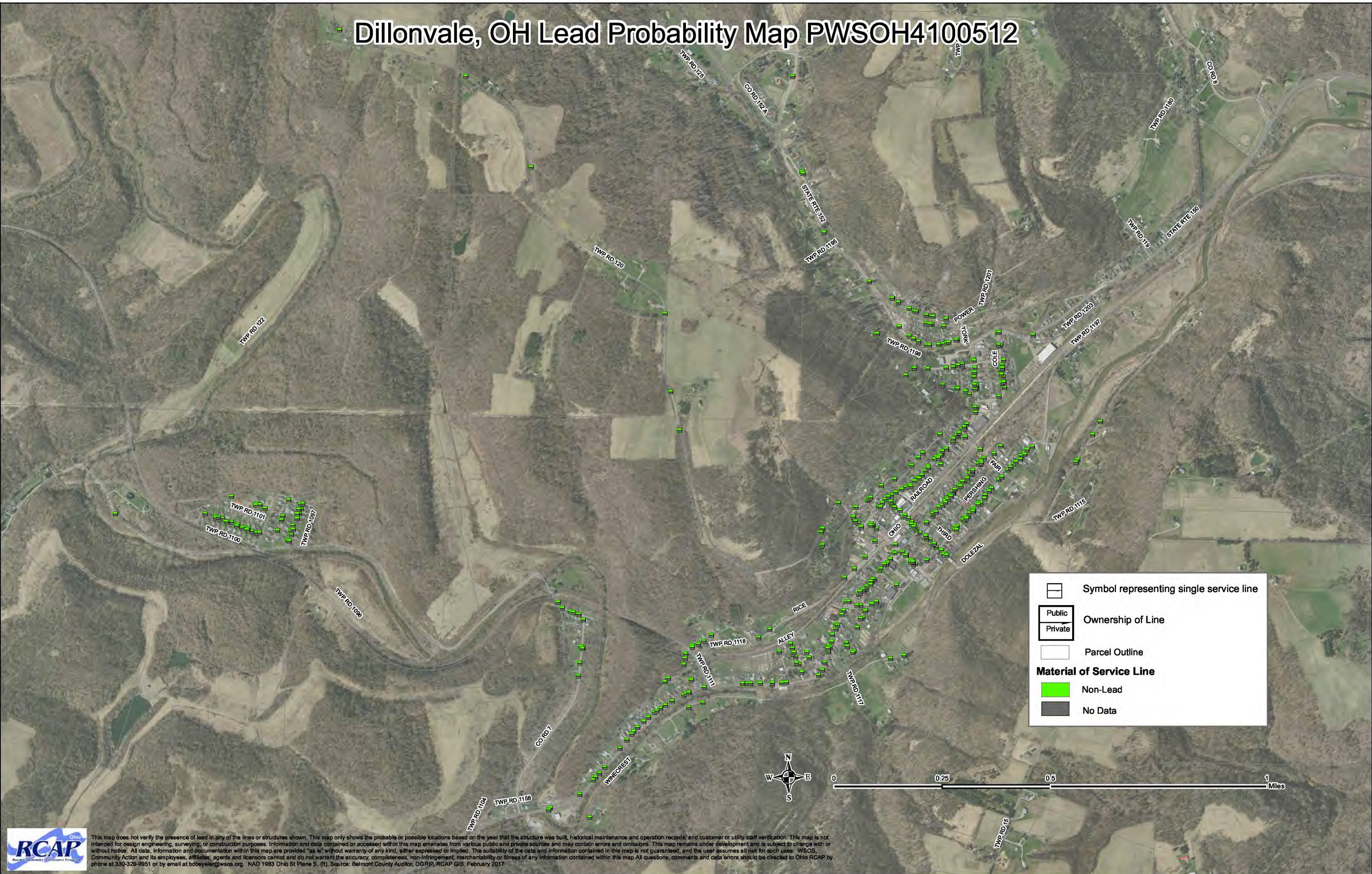
If you have questions about known and potential lead components within the Village of Dillonvale Public Water System, please contact:

164 Main Street
C/O Water Department
Dillonvale, OH 43917
(740)-769-2668
dillonvale_vil_2340@yahoo.com

For more information about lead service lines and their removal, we recommend the following resources:

- **The Lead Service Line Replacement Collaborative**
<http://www.lslr-collaborative.org/resources-for-concerned-consumers.html>
- **Ohio EPA 'Learn About Lead' page** <http://epa.ohio.gov/pic/lead.aspx>
- **US EPA Lead in Drinking Water Information Page**
<https://www.epa.gov/ground-water-and-drinking-water/basic-information-about-lead-drinking-water>

Dillonvale, OH Lead Probability Map PWSOH4100512



	Symbol representing single service line
	Ownership of Line
	Parcel Outline
Material of Service Line	
	Non-Lead
	No Data



This map does not verify the presence of lead in any of the lines or structures shown. This map only shows the probable or possible locations based on the year that the structure was built, historical maintenance and operation records, and customer or utility staff verification. This map is not intended for design engineering, surveying, or construction purposes. Information and data contained or accessed within this map emanates from various public and private sources and may contain errors and omissions. This map remains under development and is subject to change with or without notice. All data, information and documentation within this map are provided "as is" without warranty of any kind, either expressed or implied. The suitability of the data and information contained in this map is not guaranteed, and the user assumes all risk for such uses. WSOS, Community Action and its employees, affiliates, agents and licensors cannot and do not warrant the accuracy, completeness, non-infringement, merchantability or fitness of any information contained within this map. All questions, comments and data errors should be directed to Ohio RCAP by phone at 330-329-9951 or by email at bbeyeier@wsos.org. NAD 1983 Ohio St Plane S. (ft). Source: Belmont County Auditor, OGRIP, RCAP GIS. February 2017