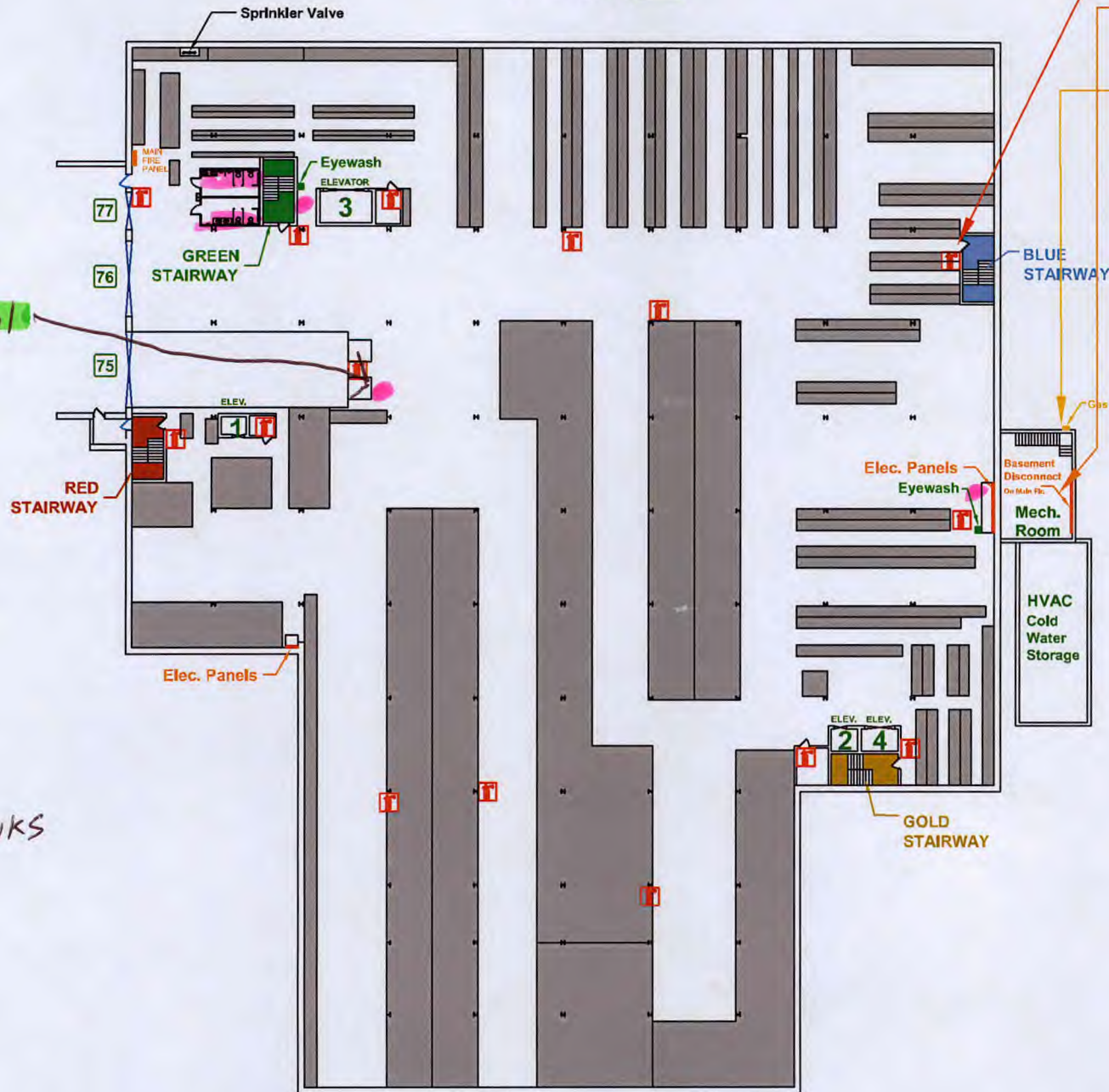


NORTH ↑

# Store Building NB

- You Are Here**
- Electrical Disconnect On Main Floor**
- Gas Shutoff Valve On Main Floor**



66 201

WELL

FOUNTAIN/SINKS

Fire Extinguisher Door Numbers

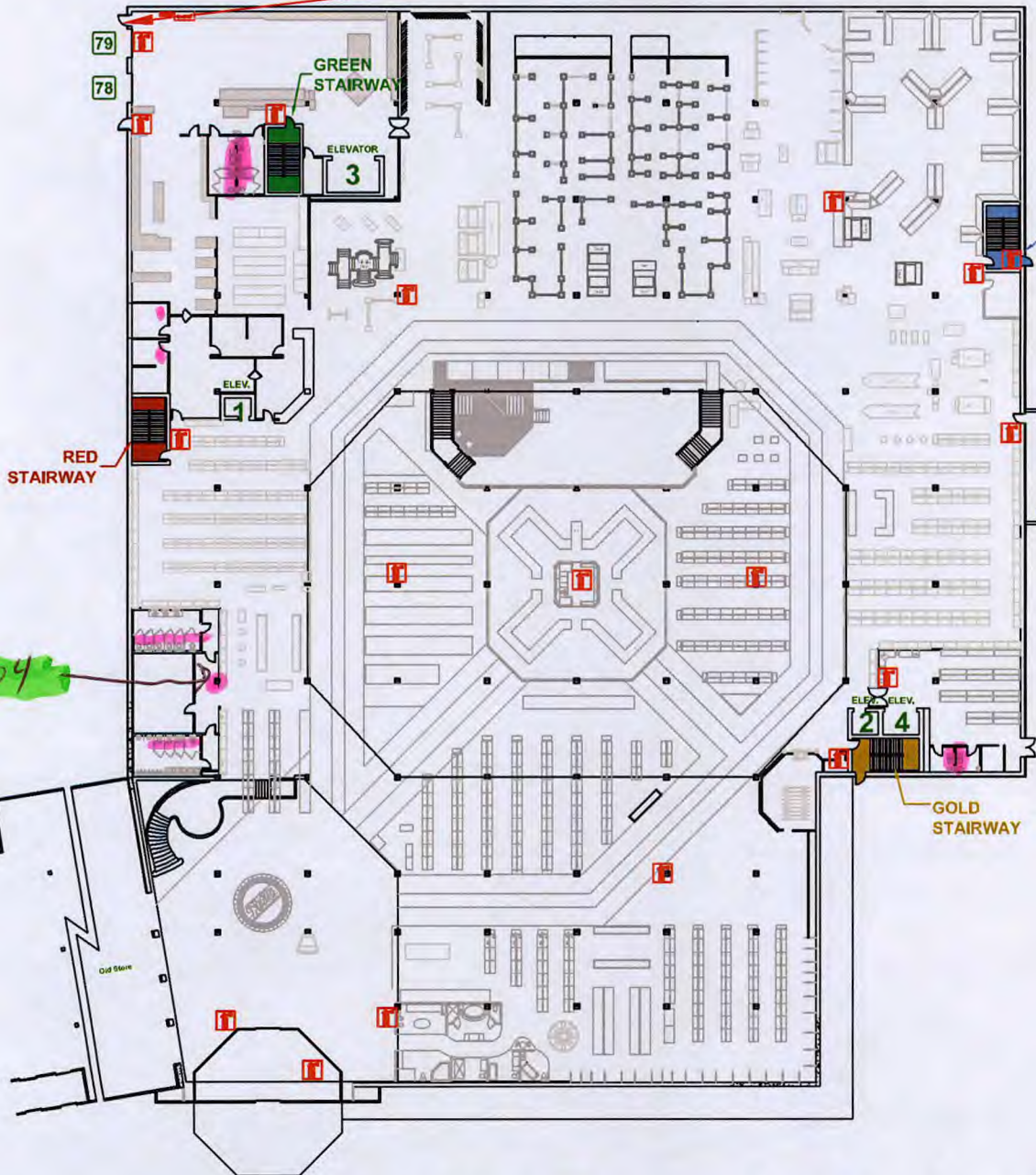
NORTH ↑

# New Store Main Floor Building N1

**You Are Here**


**Electrical Disconnect  
On Main Floor**


**Gas Shutoff Valve  
On Main Floor**



LC204

FOUNTAIN/SINK

Fire Extinguisher 

Door Numbers 

NORTH ↑

# New Store Office Level Building N2

**You Are Here**

Electrical Disconnect  
On Main Floor

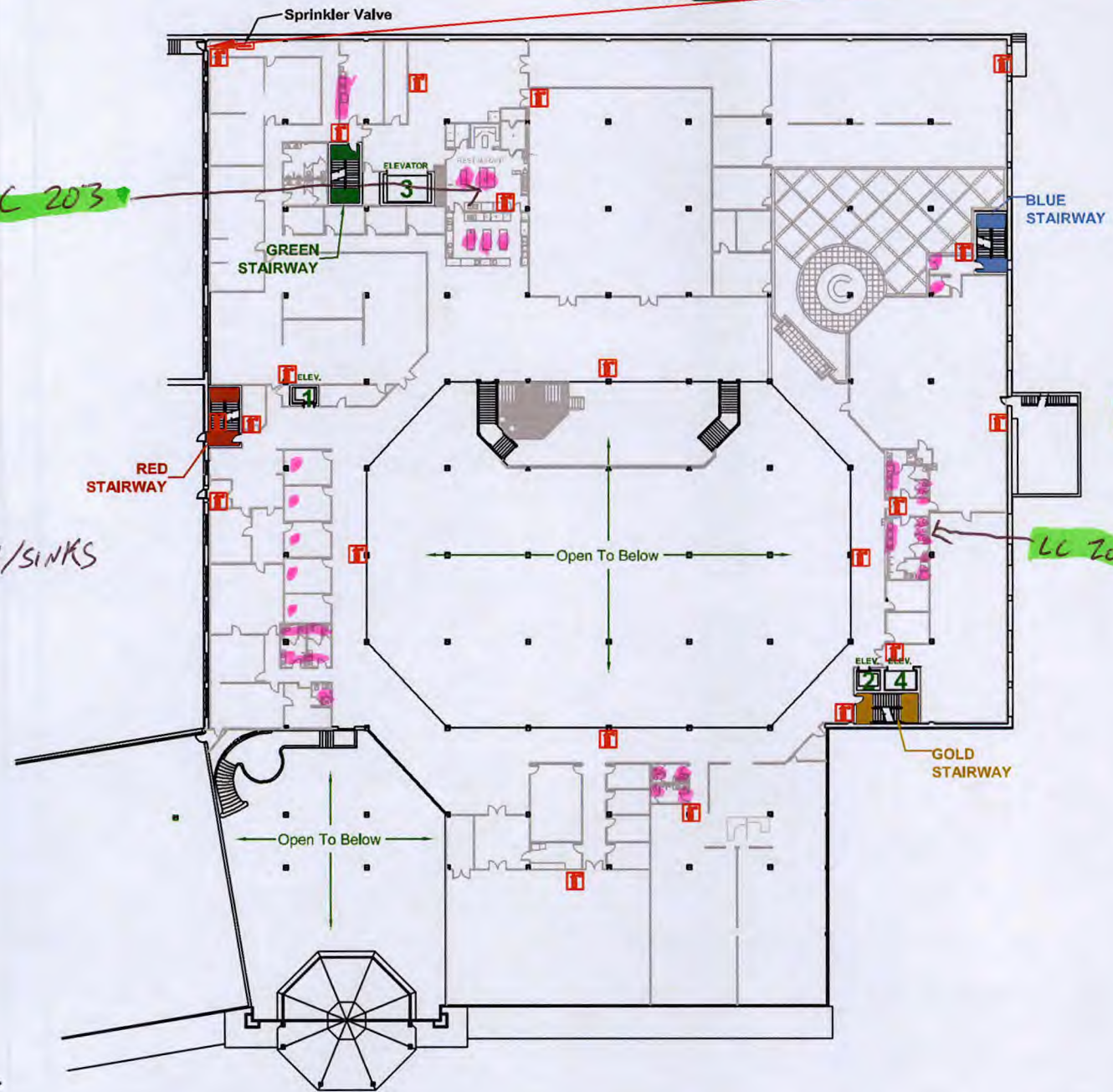
Gas Shutoff Valve  
On Main Floor

LC 203

WELL

FOUNTAIN/SINKS

LC 205



Fire Extinguisher **f**

Door Numbers **□**

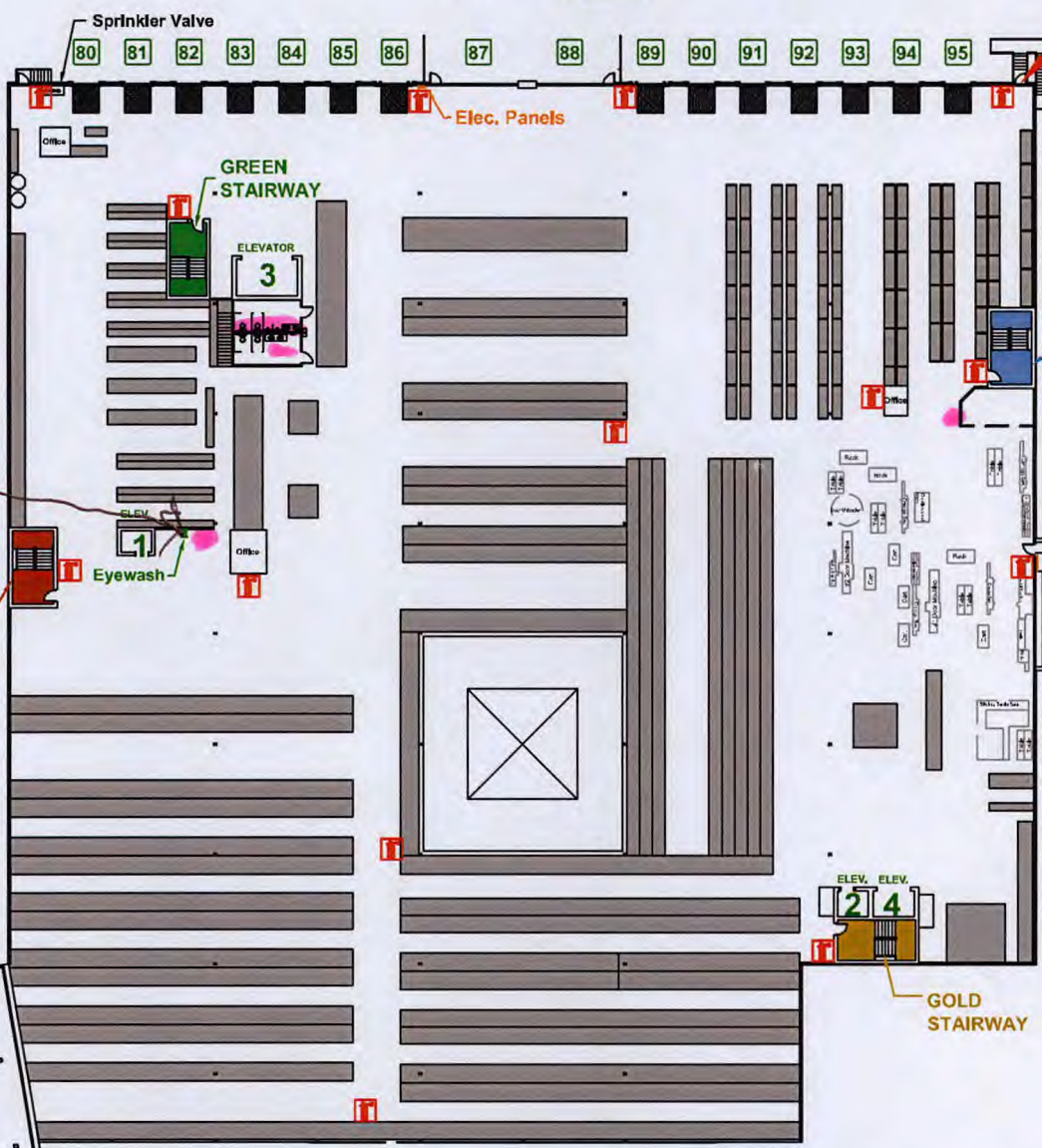
NORTH ↑

# Store Building N3

**You Are Here**

**Electrical Disconnect On Main Floor**

**Gas Shutoff Valve On Main Floor**





LC 202  
LC 202

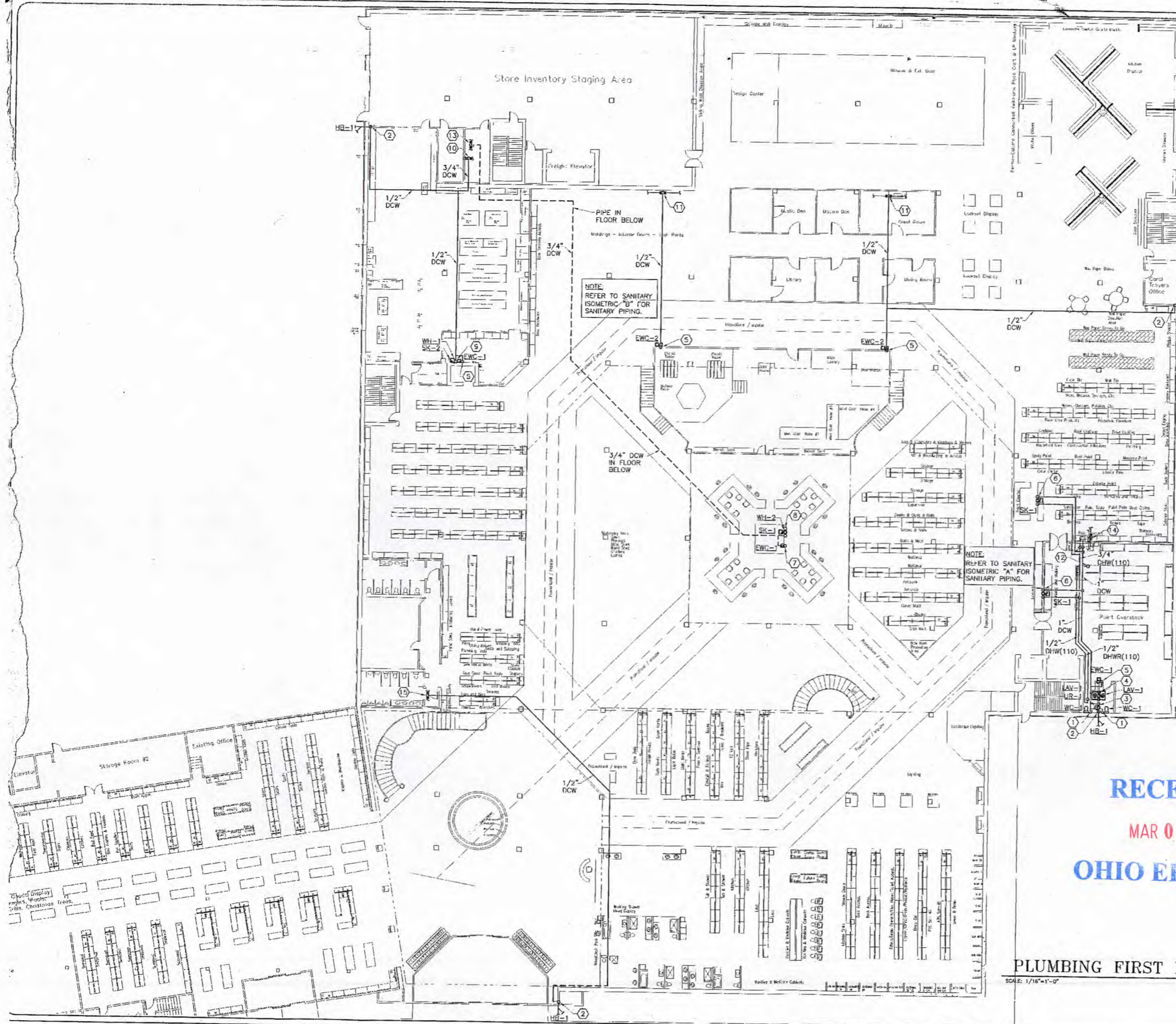
WELL

FOUNTAIN/SINKS



Fire Extinguisher 

Door Numbers 



SMC  
STALEY MECHANICAL  
CONSULTING, INC.  
3035 CROFTS VALLEY  
LEWISVILLE, OHIO 44641  
614-881-7247 FAX 614-881-5343

STATE OF OHIO  
JOSH A. STALEY  
REGISTERED PROFESSIONAL ENGINEER  
NO. 10812

**GENERAL NOTES**

① SEE ARCHITECTURAL DETAILS FOR EXACT LOCATIONS AND DIMENSIONS OF EQUIPMENT, FIXTURES, OPENINGS AND OUTLETS. COMMUNICATE WITH ARCHITECT ANY DISCREPANCIES.

- CODRD NOTES**
- ① 1/2" DCW DOWN TO WATER CLOSET.
  - ② 1/2" DCW WITH BALL VALVE TO HOSE BIB.
  - ③ 3/4" DCW WITH SHOCK STOP DOWN TO URINAL.
  - ④ 1/2" DCW AND 1/2" DHW(110) DOWN WITH 1/2" DCW AND 1/2" DHW(110) TO EACH LAVATORY.
  - ⑤ 1/2" DCW WITH BALL VALVE DOWN TO WATER COOLER.
  - ⑥ 1/2" DCW AND 1/2" DHW(110) DOWN TO SINK.
  - ⑦ 1/2" DCW FROM BELOW WITH BALL VALVE TO WATER COOLER.
  - ⑧ 1/2" DCW AND 1/2" DHW(110) FROM BELOW TO SINK.
  - ⑨ 1/2" DCW DOWN WITH 1/2" DCW TO WATER HEATER (WH-1) ABOVE SINK AND 1/2" DCW TO SINK. 1/2" DHW(110) FROM WATER HEATER TO SINK.
  - ⑩ CONNECT NEW 3/4" DCW TO EXISTING 1-1/2" DCW LINE.
  - ⑪ CONNECT NEW 1/2" DCW TO EXISTING 2-1/2" DCW LINE.
  - ⑫ 1" DCW, 3/4" DHW(110) AND 1/2" DHWR(110) UP TO SECOND FLOOR IN WALL ABOVE.
  - ⑬ CONNECT NEW 3/4" DCW TO EXISTING 1-1/2" DCW LINE IN BASEMENT.
  - ⑭ CONNECT NEW 1" DCW AND 3/4" DHW(110) TO EXISTING 1-1/4" DCW AND 1" DHW(110) LINES IN SECOND FLOOR CEILING.
  - ⑮ CONNECT NEW 1/2" DCW TO EXISTING 1" DCW LINE.

**PLUMBING SYMBOL LEGEND**

ABBREVIATION	SYMBOL	DESCRIPTION
DCW	—	DOMESTIC COLD WATER
DHW(110)	—	DOMESTIC HOT WATER 110°
DHW(140)	—	DOMESTIC HOT WATER 140°
DHWR(110)	—	DOMESTIC HOT WATER RETURN
WC	WC-1	WATER CLOSET
UR	UR-1	URINAL
LAV	LAV-1	LAVATORY
SK	SK-1	SINK
EWC	EWC-1	ELECTRIC WATER COOLER
WH	WH-1	WATER HEATER
HB	HB-1	HOSE BIB
ET	ET-1	EXPANSION TANK
AAV	AAV	AIR ADMITTANCE VALVE

RECEIVED  
MAR 06 2017  
OHIO EPA NEDO

PLUMBING FIRST FLOOR PLAN  
SCALE: 1/16"=1'-0"

**FISHER-WIDDER**  
AND ASSOCIATES, ARCHITECTS INC.  
211 EAST FRONT ST. DOVER, OHIO 44622  
PHONE: (330) 343-5343  
FAX: (330) 343-5343

A Proposed Addition For:  
**KEIM LUMBER**  
4465 State Route 557, Charm, Ohio 44617

JOB NO.  
02-1802

DATE / REV.  
3-13-06

DRAWN BY: DEK

P-1

