

Village of South Amherst

Public Water System Lead (Pb) Components

PWSID #OH4701411

Prepared February 2017

To comply with Section 6109.21 of the Ohio Revised Code, enacted in September 2016, the Village of South Amherst in Lorain County, Ohio has created the following report and attached map to identify known and potential components of its public water system that contain lead (Pb).

Service Line Ownership and Responsibility

The Village of South Amherst Water Department distributes water to 675 customers with active service lines, and 700 total service lines. The Village owns and maintains service lines from the water distribution mains up to the curb stops for each water customer. The remainder of each service line from the curb stop to the building is the responsibility of the property owner.

Probability of Lead Service Lines and Components

The Village's water operator, Dennis Hevener, has worked for the village as a full time employee for 13 years. Based on his extensive first-hand knowledge, the village has no lead in their system among the water mains or public side of service lines. Mr. Hevener has only ever witnessed copper service lines on the public side. Many service lines have been observed during the replacement of water meters over the past several years, and documentation of the replacement date was found for 97 of them. Mr. Hevener was able to observe and confirm the private side service lines during these meter replacements. He has never observed a single lead service line in the Village on the public side or private side. Some as-builts from past waterline projects were retained by the Village, which show that service lines on the public side were to be installed using type K copper pipe.

The table below provides information about the possibility of lead service lines and use of leaded plumbing materials to the customers South Amherst serves. Unless a meter replacement record was available, the year the structure was built determines which category it falls into.

Service Line Lead Probability		
Possibility of Lead	# Lines	% of System
No Lead (Public or Private)	97	14%
Low (Private only)	603	86%

The village is confident no leaded joints or other lead components exist within their water mains. The Village purchases treated surface water from the Rural Lorain County Water Authority. Village representatives do not know whether or not chemicals are added to provide corrosion control.

Indoor Plumbing

Buildings in Ohio built prior to 1998 or that use plumbing material or solder manufactured before 1998 may have materials with greater than 8% lead and are at a higher risk of contributing lead to the drinking water than materials manufactured after 1998.

Buildings built and plumbing materials manufactured after 2014 were required to have less than 0.25% lead by weight and have the lowest risk for contributing lead to the drinking water. It should be noted however that, although prohibited, some use of leaded solder or leaded components may have occurred after the prohibitions became effective.

The village has slowly been replacing each of their meters. For each house that has already been replaced they have found no evidence of lead. That is true for within the meters themselves as well as within the plumbing of the houses.

Customer Self-Reporting

The information on this map regarding privately owned service lines is based on the information from the water system staff. Property owners are encouraged to inspect their own service lines entering the building if these are in anyway exposed, and notify the Village of South Amherst Water Department if they have determined whether or not a lead service line exists. The village is taking it upon themselves to send out surveys that will allow the opportunity for the customers to examine the parts of the service they own and identify any possible lead.

Contacts and Resources

If you have questions about known and potential lead components within the Village of New Concord Public Water System, please contact:

Jeanne Maschari, SBPA, 440-986-7491

Dennis Hevener, Water Operator, 440-242-8394

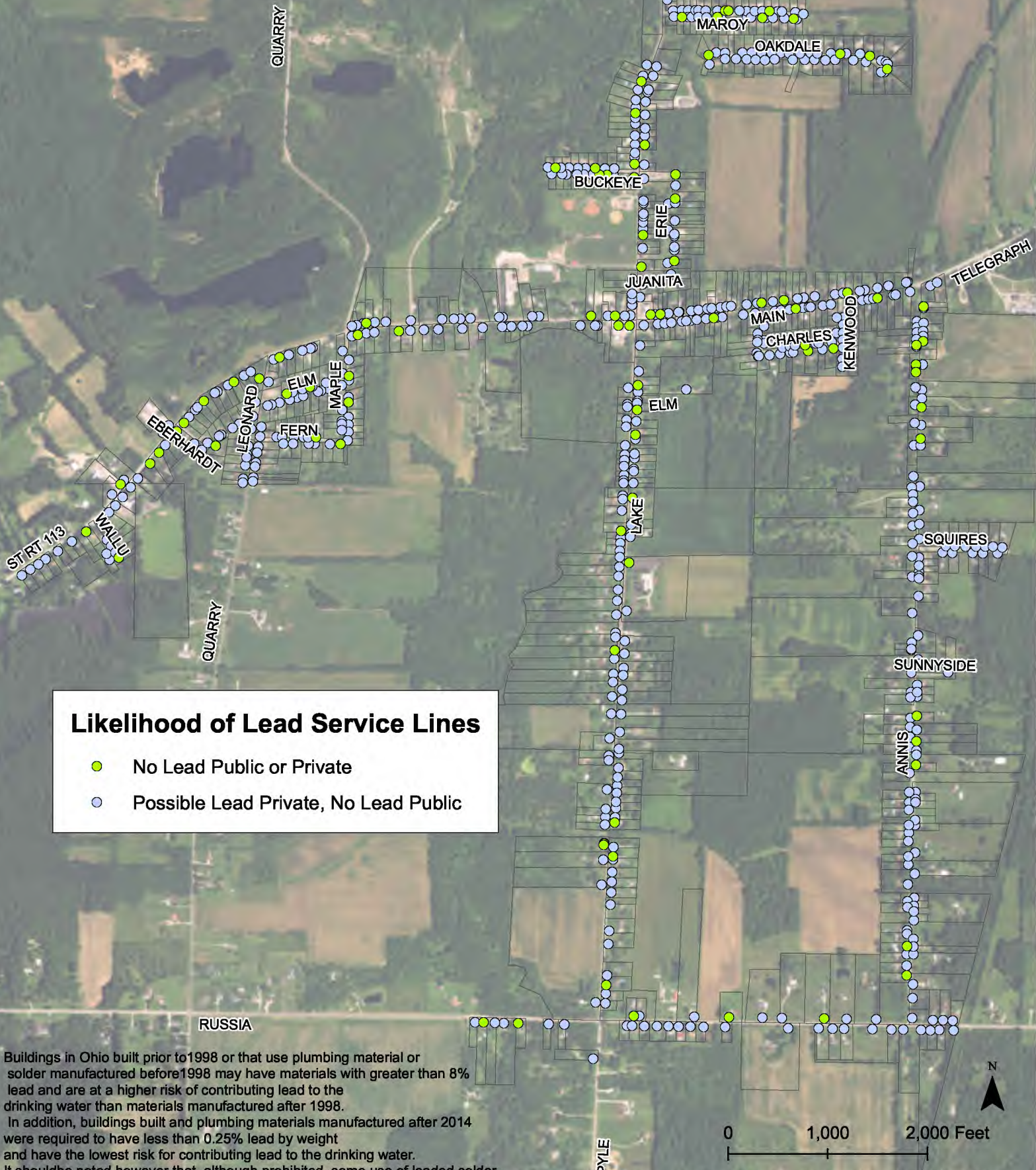
For more information about lead service lines and their removal, we recommend the following resources:

- **The Lead Service Line Replacement Collaborative**
<http://www.lslr-collaborative.org/resources-for-concerned-consumers.html>

- **Ohio EPA 'Learn About Lead' page**
<http://epa.ohio.gov/pic/lead.aspx>
- **US EPA Lead in Drinking Water Information Page**
<https://www.epa.gov/ground-water-and-drinking-water/basic-information-about-lead-drinking-water>

Village of South Amherst Lead Service Line Probability.

ID: OH4701411



Buildings in Ohio built prior to 1998 or that use plumbing material or solder manufactured before 1998 may have materials with greater than 8% lead and are at a higher risk of contributing lead to the drinking water than materials manufactured after 1998.

In addition, buildings built and plumbing materials manufactured after 2014 were required to have less than 0.25% lead by weight and have the lowest risk for contributing lead to the drinking water. It should be noted however that, although prohibited, some use of leaded solder or leaded components may have occurred after the prohibitions became effective.

Source: Esri, DigitalGlobe, GeoEye, Earthstar Geographics, CNES/Airbus DS, USDA, USGS, AEX, Getmapping, Aerogrid, IGN, IGP, swisstopo, and the GIS User Community

Village of South Amherst Sampling Sites

ID:OH4701411

Sample Site Tiers

- ▲ 1
- ▲ 3

Buildings in Ohio built prior to 1998 or that use plumbing material or solder manufactured before 1998 may have materials with greater than 8% lead and are at a higher risk of contributing lead to the drinking water than materials manufactured after 1998. In addition, buildings built and plumbing materials manufactured after 2014 were required to have less than 0.25% lead by weight and have the lowest risk for contributing lead to the drinking water. It should be noted however that, although prohibited, some use of leaded solder or leaded components may have occurred after the prohibitions became effective.

Source: Esri, DigitalGlobe, GeoEye, Earthstar Geographics, CNES/Airbus DS, USDA, USGS, AEX, Getmapping, Aerogrid, IGN, IGP, swisstopo, and the GIS User Community

0 800 1,600 Feet

