



Village of Mount Eaton (PWS 8502312)

Public Water System Lead (Pb) Components

Prepared February 2017

To comply with Section 6109.21 of the Ohio Revised Code, enacted in September 2016, the Village of Mount Eaton in Wayne County, Ohio has created the following report and attached map to identify known and potential components of its public water system that contain lead (Pb).

Service Lines and Ownership

The Village of Mount Eaton Water Department distributes water to 300 parcels. The Village owns and maintains service lines from the water distribution mains up to the curb stops for each water customer. The remainder of each service line from the curb stop to the building is the responsibility of the property owner.

Since the original construction of the water system in 1969, it has been standard procedure for the water system operators to use 1" PVC from the tapping saddle on the main up to the curb stop. It is recommended that property owners install CTS plastic (rated for 200 psi) for private water service lines, but there are no official regulations to legally enforce this within the village. While copper, PVC, and galvanized pipe have been used for private lines, lead pipe has never been installed in this water distribution system. While lead solder may have been used in the installation process for some of the private copper service lines, this is not common and there are no lead pipes used.

Distribution System

The Village of Mount Eaton produces treated ground water and distributes potable water through approximately 12.5 miles of water main lines. Since the original construction between 1969 and 2004, no major sections have been replaced, only emergency repairs made when necessary. Within the distribution system, none of the pipes themselves are known to contain any lead. The entire system was constructed using SDR 21 PVC (ranging from 1½" to 6" diameter), with the exception of one small section containing asbestos cement. None of the joints are known to contain lead.

Also, the water meters at each customer location may be as old as 25 years and may contain more than 8% lead. Meters installed after 1998 may contain up to 8% lead. Meters installed after 2014 will have less than 0.25% lead.

Indoor Plumbing

Buildings in Ohio built prior to 1998 or that use plumbing material or solder manufactured before 1998 may have materials with greater than 8% lead and are at a higher risk of contributing lead to the drinking water than materials manufactured after 1998.

Buildings built and plumbing materials manufactured after 2014 were required to have less than 0.25% lead by weight and have the lowest risk for contributing lead to the drinking water. It should be noted however that, although prohibited, some use of leaded solder or leaded components may have occurred after the prohibitions became effective.

Probability of Lead Pipe, Solder and Fittings of Buildings		
Building Plumbing Materials	# Parcels	% of Parcels
0% - 100% (1830 – 1997)	240	80.0%
≤ 8.0% Lead Solder or Plumbing Material (1998 – 2013)	24	8.0%
≤ 0.25% Lead Solder or Plumbing Material (2014 - present)	3	1.0%
Age of Structures on Parcel Unknown	33	11.0%

In Mount Eaton, only 3 properties are known to have structures built since 2014, and therefore nearly all buildings in the village may have some lead in the solder or fixtures.

Customer Self-Reporting

The information on this map regarding privately owned service lines is based on the limited information from the water system staff and Wayne County building and parcel data. Property owners are encouraged to inspect their own service lines entering the building if these are in anyway exposed, and notify the Village of Mount Eaton Village Administrator if they have determined whether or not a lead service line exists. Please contact the Water Billing Clerk by calling 330-359-5452 or by visiting the main office at 15958 E Main St, Mount Eaton, Ohio, 44659. A representative from the water department will contact you to confirm and update this information for the next map release.

Contacts and Resources

If you have questions about known and potential lead components within the Village of Mount Eaton Public Water System, please contact:

Village Administrator, Craig Hewitt

15958 E Main St, Mount Eaton, Ohio, 44659

Phone - 330-359-5452

For more information about lead service lines and their removal, we recommend the following resources:

- **The Lead Service Line Replacement Collaborative**
<http://www.lslr-collaborative.org/resources-for-concerned-consumers.html>
- **Ohio EPA 'Learn About Lead' page**
<http://epa.ohio.gov/pic/lead.aspx>
- **US EPA Lead in Drinking Water Information Page**
<https://www.epa.gov/ground-water-and-drinking-water/basic-information-about-lead-drinking-water>

Village of Mount Eaton Public Water Distribution System Lead Components and Lead Service Lines Map

The following map(s) does not verify the presence of lead in any of the lines or structures shown. This map only shows the probable or possible locations based on the year that the structure was built, historical maintenance and operation records, and customer or utility staff verification.

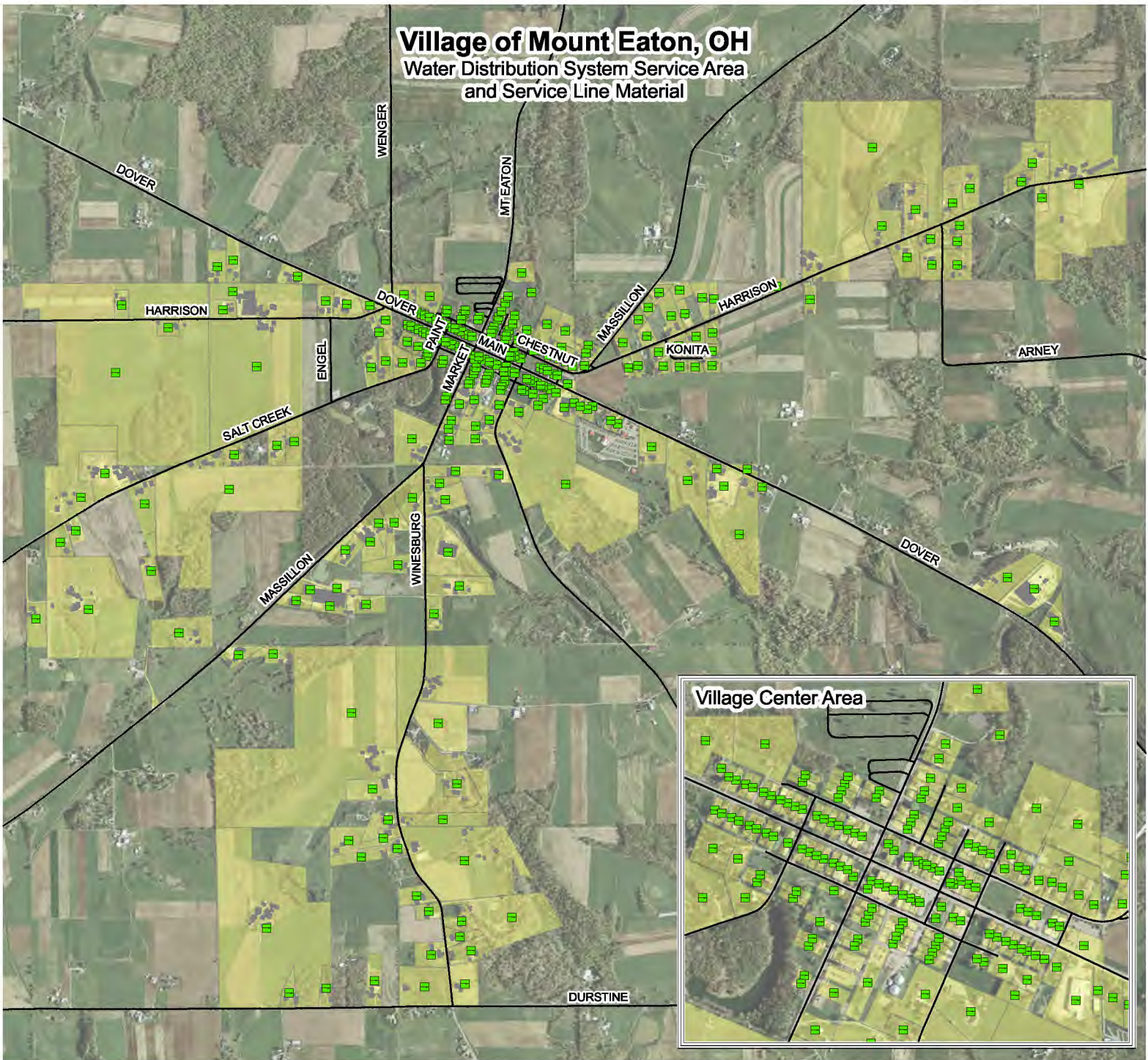
This map is not intended for design engineering, surveying, or construction purposes. Information and data contained or accessed within this map emanates from various public and private sources and may contain errors and omissions

All data, information and documentation within this map are provided "as is" without warranty of any kind, either expressed or implied. The suitability of the data and information contained in this map is not guaranteed, and the user assumes all risk for such uses. WSOS Community Action and its employees, affiliates, agents and licensors cannot and do not warrant the accuracy, completeness, non-infringement, merchantability or fitness of any information contained within this map.

GIS Data Sources: OGRIP, OSIP, Wayne County Auditor, RCAP GIS. Datum/Projection: NAD 1983 Ohio State Plane North (ft) Date: 02/09/2017

Village of Mount Eaton, OH

Water Distribution System Service Area and Service Line Material



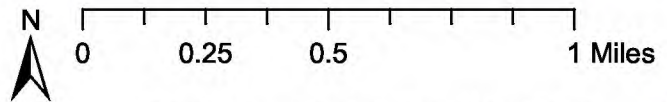
□ Symbol representing single service line

Public Ownership of Line
Private

Material of Service Line

Lead
Non-Lead
No Information

Mount Eaton Water Service Building Footprints
Mount Eaton PWS Service Area



Created for use by The Village of Mount Eaton
By RCAP GIS Team
February 6, 2017

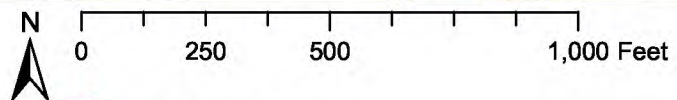





Buildings in Ohio built prior to 1998 or that use plumbing material or solder manufactured before 1998 may have materials with greater than 8% lead and are at a higher risk of contributing lead to the drinking water than materials manufactured after 1998.

Buildings built and plumbing materials manufactured after 2014 were required to have less than 0.25% lead by weight and have the lowest risk for contributing lead to the drinking water. It should be noted however that, although prohibited, some use of leaded solder or leaded components may have occurred after the prohibitions became effective.

Village of Mount Eaton, OH

Lead and Copper Sampling Sites



-  Lead & Copper Sampling Site
-  Mount Eaton Water Service Building Footprints
-  Mount Eaton PWS Service Area

Created for use by The Village of Mount Eaton
By RCAP GIS Team
February 6, 2017

Coordinate System: NAD 1983 StatePlane Ohio North FIPS 3401 Feet
Data Sources: Village of Mount Eaton, Wayne County Auditor, RCAP GIS Team, ESRI, OGRIP, OSIP, TIGER Lines



VERIFICATION FORM FOR COMMUNITY PUBLIC WATER SYSTEMS CLAIMING NO LEAD SERVICE LINES

The owner or operator of all community public water systems must identify and map areas of their distribution system that are known or are likely to contain lead service lines. Systems must submit a copy of the applicable map to the Ohio Department of Health and the Ohio Department of Job and Family Services. Systems must also submit a report to the director containing at least both of the following: (1) The applicable map with narrative, and (2) A list of sampling locations used to collect samples as required by Ohio Revised Code (ORC) Section 6109.121 and any rules adopted thereunder, including contact information for the owner and occupant of each sampling site.

Should a water system determine no lead service lines exist in their distribution system, they must provide information stating they reviewed, at the minimum, historical permit records and local ordinances, distribution maintenance records and information pertaining to installation dates or materials for all service lines. This information must be verified below.

I HEREBY CERTIFY THAT THE FOLLOWING METHOD(S) WERE USED TO DETERMINE NO LEAD SERVICE LINES EXIST IN THIS WATER SYSTEM'S DISTRIBUTION SYSTEM, AS REQUIRED BY ORC 6109.121(F):

LEAD SERVICE LINE VERIFICATION

This PWS states they have no lead service lines and has reviewed the following information (select one or more of the following):

- ☐ Historical permit records and/or local ordinances
- ☒ Distribution maintenance records (i.e. meter replacement, waterline break repairs)
- ☐ Information pertaining to installation dates for all service lines (i.e. after 1986 when lead service lines were banned)
- ☐ Service line material of all service lines is known (i.e. all service lines are known to be PVC)

Craig Hewitt MARCH 2, 2017

Signature of Responsible Person

Date

Craig Hewitt Operator

Printed Name and Title of Responsible Person

PWS NAME: Village Mt. Eaton

PWS ID: OH 8502312

COUNTY: Wayne

For Ohio EPA use only:

Date Verification Rec'd: _____