

RE: Cornell Abraxas  
Report  
Drinking Water Program  
Richland County  
PWS ID: OH7033512

Revised

RECEIVED

MAR 13 2017

DDAGW - NWDO

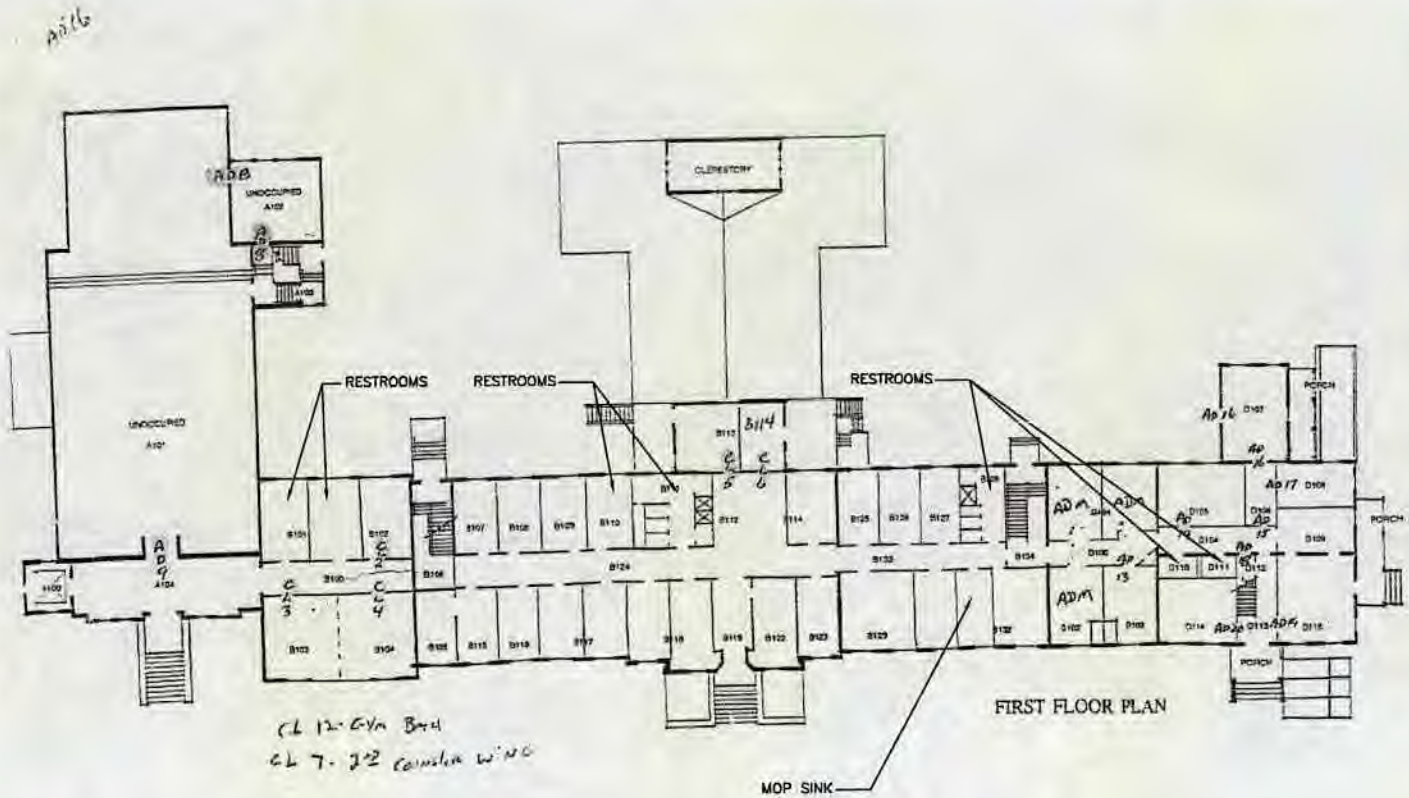


### CORNELL ABRAXAS

SCALE : NOT TO SCALE

NOTES:

1. ALL FIXTURES WERE INSTALLED IN THE 1970'S.
2. ALL PIPING IS PVC PLASTIC, GALVANIZED, & COPPER.
3. COPPER PIPING LIKELY CONTAINS LEAD SOLDER.
4. ALL FEED LINES TO FIXTURES (IE: RESTROOMS, SINKS, ETC.) ARE COPPER.
5. ALL MAIN LINES IN BETWEEN ROOMS AND FIXTURES ARE GALVANIZED.
6. ONLY REPAIRS IN SYSTEM HAVE BEEN WITH PLASTIC.
7. SPECIFIC AGE OF NEWER FIXTURES IS UNKNOWN.
8. BUILDINGS IN OHIO BUILT PRIOR TO 1998 OR THAT USE PLUMBING MATERIAL OR SOLDER MANUFACTURED BEFORE 1998 MAY HAVE MATERIALS WITH GREATER THAN 8% LEAD AND ARE AT A HIGHER RISK OF CONTRIBUTING LEAD TO THE DRINKING WATER THAN MATERIALS MANUFACTURED AFTER 1998. IN ADDITION, BUILDINGS BUILT AND PLUMBING MATERIALS MANUFACTURED AFTER 2014 WERE REQUIRED TO HAVE LESS THAN 0.25% LEAD BY WEIGHT AND HAVE THE LOWEST RISK FOR CONTRIBUTING LEAD TO THE DRINKING WATER. IT SHOULD BE NOTED HOWEVER THAT, ALTHOUGH PROHIBITED, SOME USE OF LEADED SOLDER OR LEADED COMPONENTS MAY HAVE OCCURRED AFTER THE PROHIBITIONS BECAME EFFECTIVE.

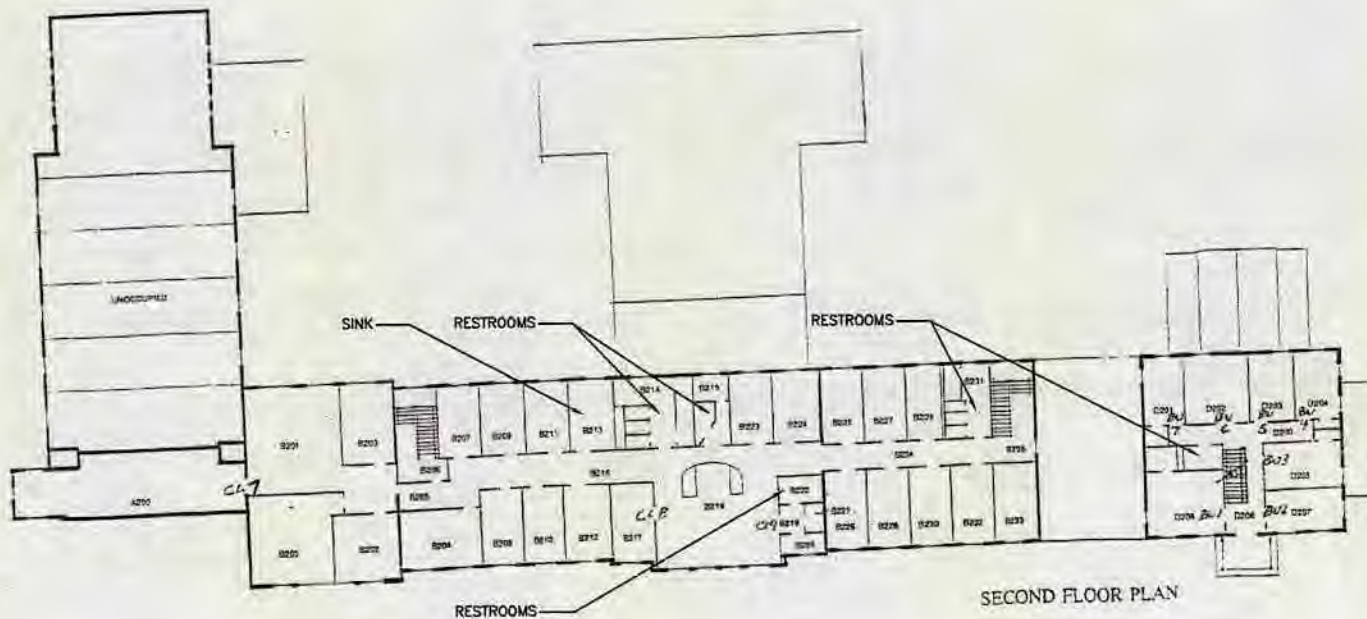


## CORNELL ABRAXAS

SCALE : NOT TO SCALE

NOTES:

1. ALL FIXTURES WERE INSTALLED IN THE 1970'S.
2. ALL PIPING IS PVC PLASTIC, GALVANIZED, & COPPER.
3. COPPER PIPING LIKELY CONTAINS LEAD SOLDER.
4. ALL FEED LINES TO FIXTURES (IE: RESTROOMS, SINKS, ETC.) ARE COPPER.
5. ALL MAIN LINES IN BETWEEN ROOMS AND FIXTURES ARE GALVANIZED.
6. ONLY REPAIRS IN SYSTEM HAVE BEEN WITH PLASTIC.
7. SPECIFIC AGE OF NEWER FIXTURES IS UNKNOWN.
8. BUILDINGS IN OHIO BUILT PRIOR TO 1998 OR THAT USE PLUMBING MATERIAL OR SOLDER MANUFACTURED BEFORE 1998 MAY HAVE MATERIALS WITH GREATER THAN 8% LEAD AND ARE AT A HIGHER RISK OF CONTRIBUTING LEAD TO THE DRINKING WATER THAN MATERIALS MANUFACTURED AFTER 1998. IN ADDITION, BUILDINGS BUILT AND PLUMBING MATERIALS MANUFACTURED AFTER 2014 WERE REQUIRED TO HAVE LESS THAN 0.25% LEAD BY WEIGHT AND HAVE THE LOWEST RISK FOR CONTRIBUTING LEAD TO THE DRINKING WATER. IT SHOULD BE NOTED HOWEVER THAT, ALTHOUGH PROHIBITED, SOME USE OF LEADED SOLDER OR LEADED COMPONENTS MAY HAVE OCCURRED AFTER THE PROHIBITIONS BECAME EFFECTIVE.



SECOND FLOOR PLAN



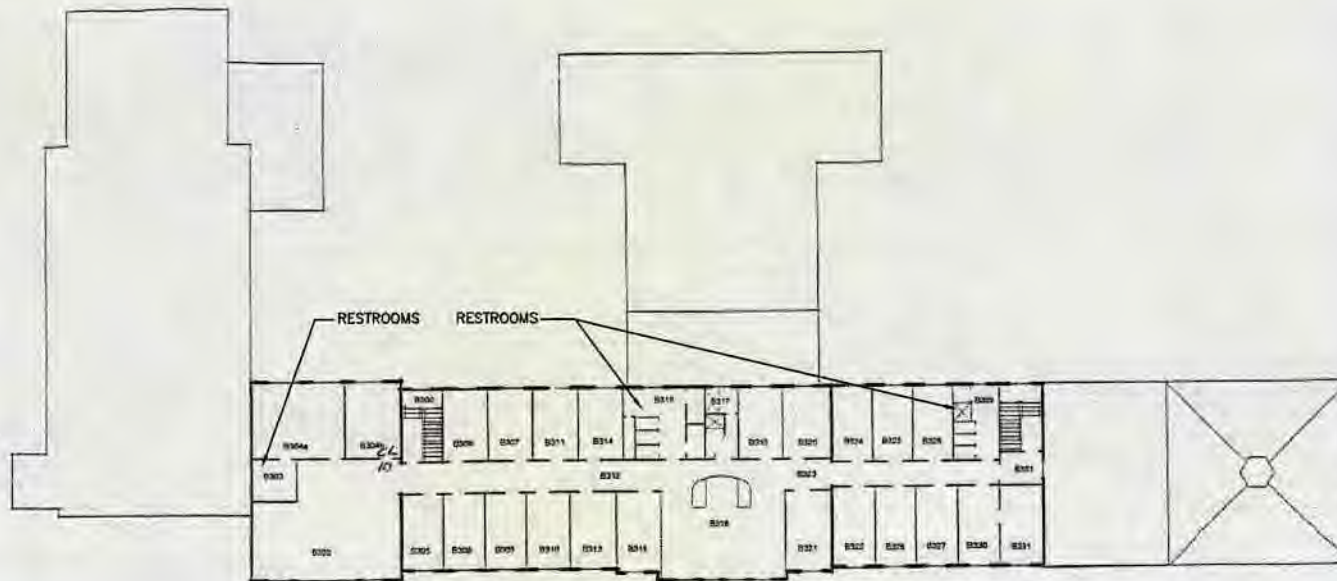
CORNELL ABRAXAS  
 2775 OH-39  
 SHELBY, OHIO 44875  
 PHONE # (800) 680-5747  
 PWS ID # OH7033512

## CORNELL ABRAXAS

SCALE : NOT TO SCALE

NOTES:

1. ALL FIXTURES WERE INSTALLED IN THE 1970'S.
2. ALL PIPING IS PVC PLASTIC, GALVANIZED, & COPPER.
3. COPPER PIPING LIKELY CONTAINS LEAD SOLDER.
4. ALL FEED LINES TO FIXTURES (IE: RESTROOMS, SINKS, ETC.) ARE COPPER.
5. ALL MAIN LINES IN BETWEEN ROOMS AND FIXTURES ARE GALVANIZED.
6. ONLY REPAIRS IN SYSTEM HAVE BEEN WITH PLASTIC.
7. SPECIFIC AGE OF NEWER FIXTURES IS UNKNOWN.
8. BUILDINGS IN OHIO BUILT PRIOR TO 1998 OR THAT USE PLUMBING MATERIAL OR SOLDER MANUFACTURED BEFORE 1998 MAY HAVE MATERIALS WITH GREATER THAN 8% LEAD AND ARE AT A HIGHER RISK OF CONTRIBUTING LEAD TO THE DRINKING WATER THAN MATERIALS MANUFACTURED AFTER 1998. IN ADDITION, BUILDINGS BUILT AND PLUMBING MATERIALS MANUFACTURED AFTER 2014 WERE REQUIRED TO HAVE LESS THAN 0.25% LEAD BY WEIGHT AND HAVE THE LOWEST RISK FOR CONTRIBUTING LEAD TO THE DRINKING WATER. IT SHOULD BE NOTED HOWEVER THAT, ALTHOUGH PROHIBITED, SOME USE OF LEADED SOLDER OR LEADED COMPONENTS MAY HAVE OCCURRED AFTER THE PROHIBITIONS BECAME EFFECTIVE.



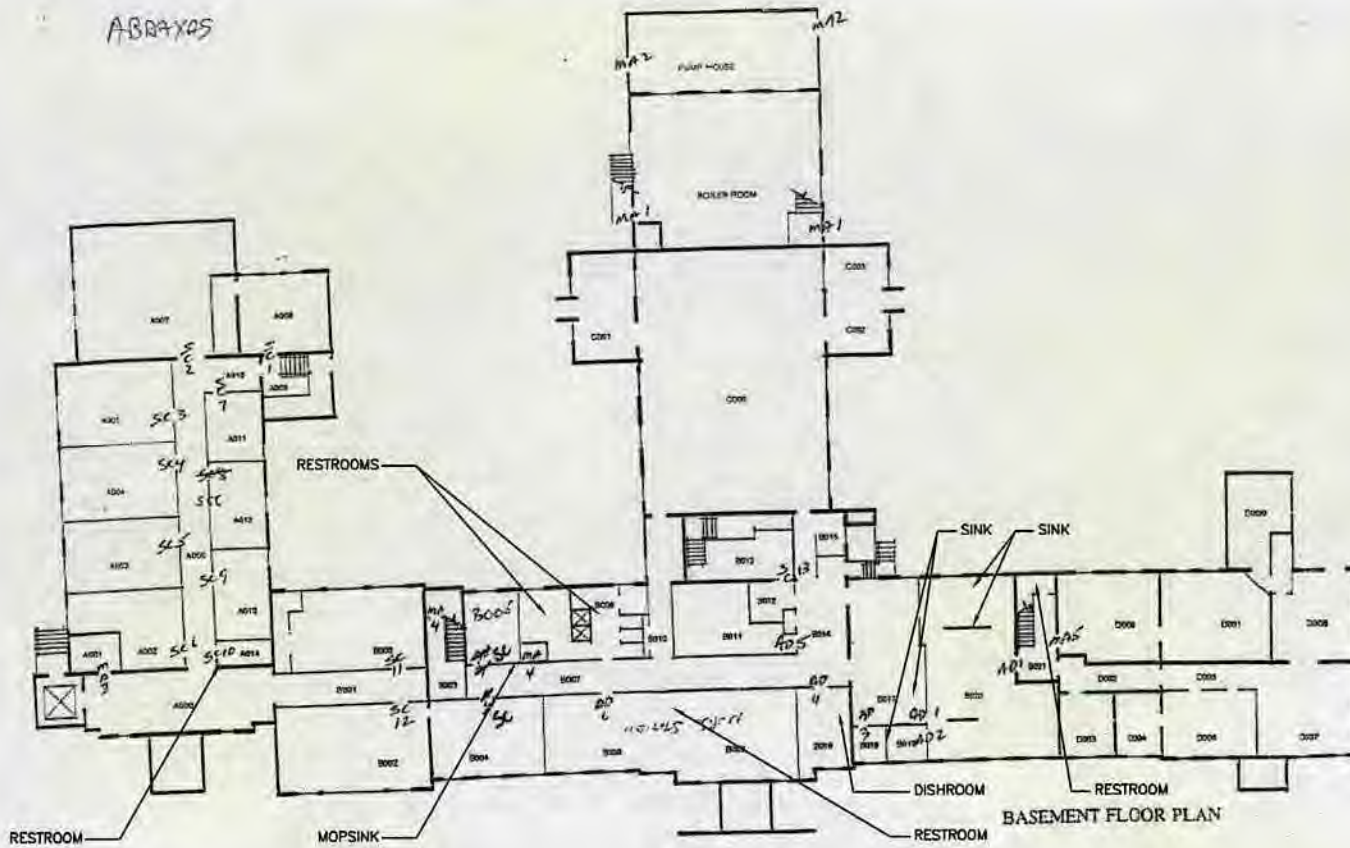
THIRD FLOOR PLAN

NORTH



CORNELL ABRAXAS  
 2775 OH-39  
 SHELBY, OHIO 44875  
 PHONE # (800) 680-5747  
 PWS ID # OH7033512

ABRAXAS



## CORNELL ABRAXAS

SCALE : NOT TO SCALE

### NOTES:

1. ALL FIXTURES WERE INSTALLED IN THE 1970'S.
2. ALL PIPING IS PVC PLASTIC, GALVANIZED, & COPPER.
3. COPPER PIPING LIKELY CONTAINS LEAD SOLDER.
4. ALL FEED LINES TO FIXTURES (IE: RESTROOMS, SINKS, ETC.) ARE COPPER.
5. ALL MAIN LINES IN BETWEEN ROOMS AND FIXTURES ARE GALVANIZED.
6. ONLY REPAIRS IN SYSTEM HAVE BEEN WITH PLASTIC.
7. SPECIFIC AGE OF NEWER FIXTURES IS UNKNOWN.
8. BUILDINGS IN OHIO BUILT PRIOR TO 1998 OR THAT USE PLUMBING MATERIAL OR SOLDER MANUFACTURED BEFORE 1998 MAY HAVE MATERIALS WITH GREATER THAN 8% LEAD AND ARE AT A HIGHER RISK OF CONTRIBUTING LEAD TO THE DRINKING WATER THAN MATERIALS MANUFACTURED AFTER 1998. IN ADDITION, BUILDINGS BUILT AND PLUMBING MATERIALS MANUFACTURED AFTER 2014 WERE REQUIRED TO HAVE LESS THAN 0.25% LEAD BY WEIGHT AND HAVE THE LOWEST RISK FOR CONTRIBUTING LEAD TO THE DRINKING WATER. IT SHOULD BE NOTED HOWEVER THAT, ALTHOUGH PROHIBITED, SOME USE OF LEADED SOLDER OR LEADED COMPONENTS MAY HAVE OCCURRED AFTER THE PROHIBITIONS BECAME EFFECTIVE.

NORTH



CORNELL ABRAXAS  
2775 OH-39  
SHELBY, OHIO 44875  
PHONE # (800) 680-5747  
PWS ID # OH7033512

## CORNELL ABRAXAS

SCALE : NOT TO SCALE

NOTES:

1. ALL FIXTURES WERE INSTALLED IN THE 1970'S.
2. ALL PIPING IS PVC PLASTIC, GALVANIZED, & COPPER.
3. COPPER PIPING LIKELY CONTAINS LEAD SOLDER.
4. ALL FEED LINES TO FIXTURES (IE: RESTROOMS, SINKS, ETC.) ARE COPPER.
5. ALL MAIN LINES IN BETWEEN ROOMS AND FIXTURES ARE GALVANIZED.
6. ONLY REPAIRS IN SYSTEM HAVE BEEN WITH PLASTIC.
7. SPECIFIC AGE OF NEWER FIXTURES IS UNKNOWN.
8. BUILDINGS IN OHIO BUILT PRIOR TO 1998 OR THAT USE PLUMBING MATERIAL OR SOLDER MANUFACTURED BEFORE 1998 MAY HAVE MATERIALS WITH GREATER THAN 8% LEAD AND ARE AT A HIGHER RISK OF CONTRIBUTING LEAD TO THE DRINKING WATER THAN MATERIALS MANUFACTURED AFTER 1998. IN ADDITION, BUILDINGS BUILT AND PLUMBING MATERIALS MANUFACTURED AFTER 2014 WERE REQUIRED TO HAVE LESS THAN 0.25% LEAD BY WEIGHT AND HAVE THE LOWEST RISK FOR CONTRIBUTING LEAD TO THE DRINKING WATER. IT SHOULD BE NOTED HOWEVER THAT, ALTHOUGH PROHIBITED, SOME USE OF LEADED SOLDER OR LEADED COMPONENTS MAY HAVE OCCURRED AFTER THE PROHIBITIONS BECAME EFFECTIVE.

NORTH



CORNELL ABRAXAS  
 2775 OH-39  
 SHELBY, OHIO 44875  
 PHONE # (800) 680-5747  
 PWS ID # OH7033512

