

RE: Country Meadow Care Center
Report
Drinking Water Program
Richland
PWS ID: OH7003612

COUNTRY MEADOW

RECEIVED

NORTH



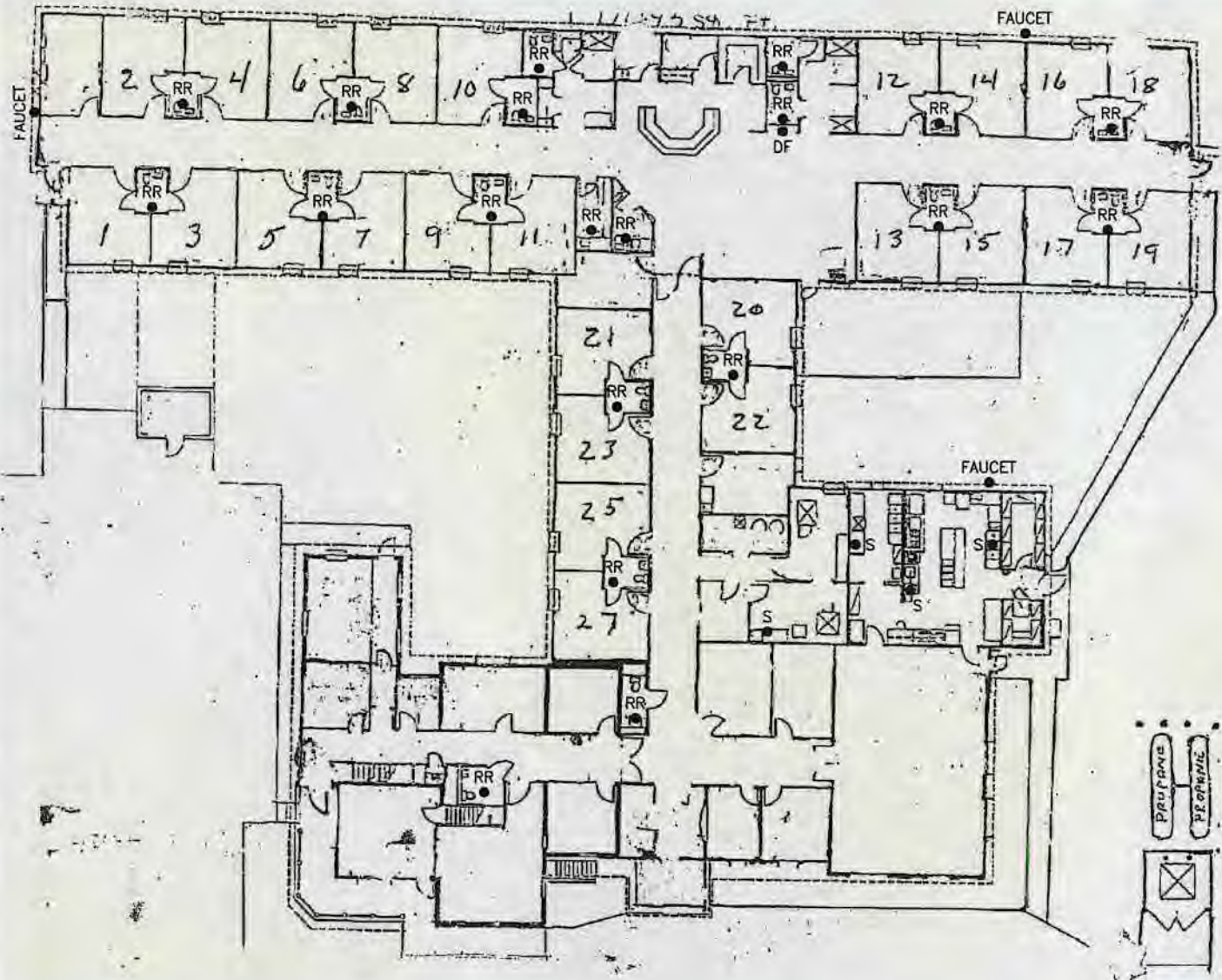
MAR 14 2017

DDAGW - NWDO

SCALE : NOT TO SCALE

NOTES:

1. BUILDING WAS BUILT IN 1993.
2. ALL PIPING IS PVC PLASTIC & COPPER.
3. ALL COPPER PIPING LIKELY CONTAINS LEAD SOLDER.
4. 60% OF THE SINK FAUCETS WERE REPLACED IN 2006.
5. MAINTENANCE DOES NOT KNOW WHICH SPECIFIC SINKS WERE REPLACED IN 2006.
6. REMAINING SINKS, RESTROOMS, & DRINKING FOUNTAINS WERE INSTALLED WHEN THE BUILDING WAS BUILT IN 1993.
6. BUILDINGS IN OHIO BUILT PRIOR TO 1998 OR THAT USE PLUMBING MATERIAL OR SOLDER MANUFACTURED BEFORE 1998 MAY HAVE MATERIALS WITH GREATER THAN 8% LEAD AND ARE AT A HIGHER RISK OF CONTRIBUTING LEAD TO THE DRINKING WATER THAN MATERIALS MANUFACTURED AFTER 1998. IN ADDITION, BUILDINGS BUILT AND PLUMBING MATERIALS MANUFACTURED AFTER 2014 WERE REQUIRED TO HAVE LESS THAN 0.25% LEAD BY WEIGHT AND HAVE THE LOWEST RISK FOR CONTRIBUTING LEAD TO THE DRINKING WATER. IT SHOULD BE NOTED HOWEVER THAT, ALTHOUGH PROHIBITED, SOME USE OF LEADED SOLDER OR LEADED COMPONENTS MAY HAVE OCCURRED AFTER THE PROHIBITIONS BECAME EFFECTIVE.



SYMBOL LEGEND

RR F S DF

RR - RESTROOM W/ SINK
F - OUTSIDE FAUCET
S - SINK
DF - DRINKING FOUNTAIN

COUNTRY MEADOW CARE CENTER
4910 ALGIRE RD.
BELLVILLE, OHIO 44813
PHONE # (419) 886-3922
PWS ID # OH7003612

MCGHEE'S TECHNICAL
MIWS
WATER SERVICES, INC.
2230 JAMES ROAD, BELLVILLE, OHIO 44813-9279