

RE: Williams County Engineer Office
Report
Lead Mapping
Drinking Water Program
Williams County
PWS ID: OH8534812

Office of The Williams County Engineer

Todd J. Roth, P.E., P.S.

troth@wmscoengineer.com

RECEIVED

MAR 16 2017

**OHIO E.P.A.
N.W.D.O.**

Musa A. Khaleq, P.E.
Environmental Engineer 2
Division of Drinking and Ground Waters
Northwest District Office
Ohio EPA

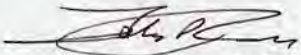
I have completed the mapping of our water system and have found that all of the water lines are copper. There were no lead fittings and I am unsure of what type of solder was used in the oldest plumbing. This building was built in 1972 and we have no information on plumbing materials. We made interior changes inside of the structure creating new restrooms and storage tanks (to fill jet vac trucks and pull behind trailer tanks). These changes were made after 1999.

This is a list of our lead and copper testing sites:

Women's restroom
Janitor's closet
Lab sink
Truck bay wash basin
Break room sink.

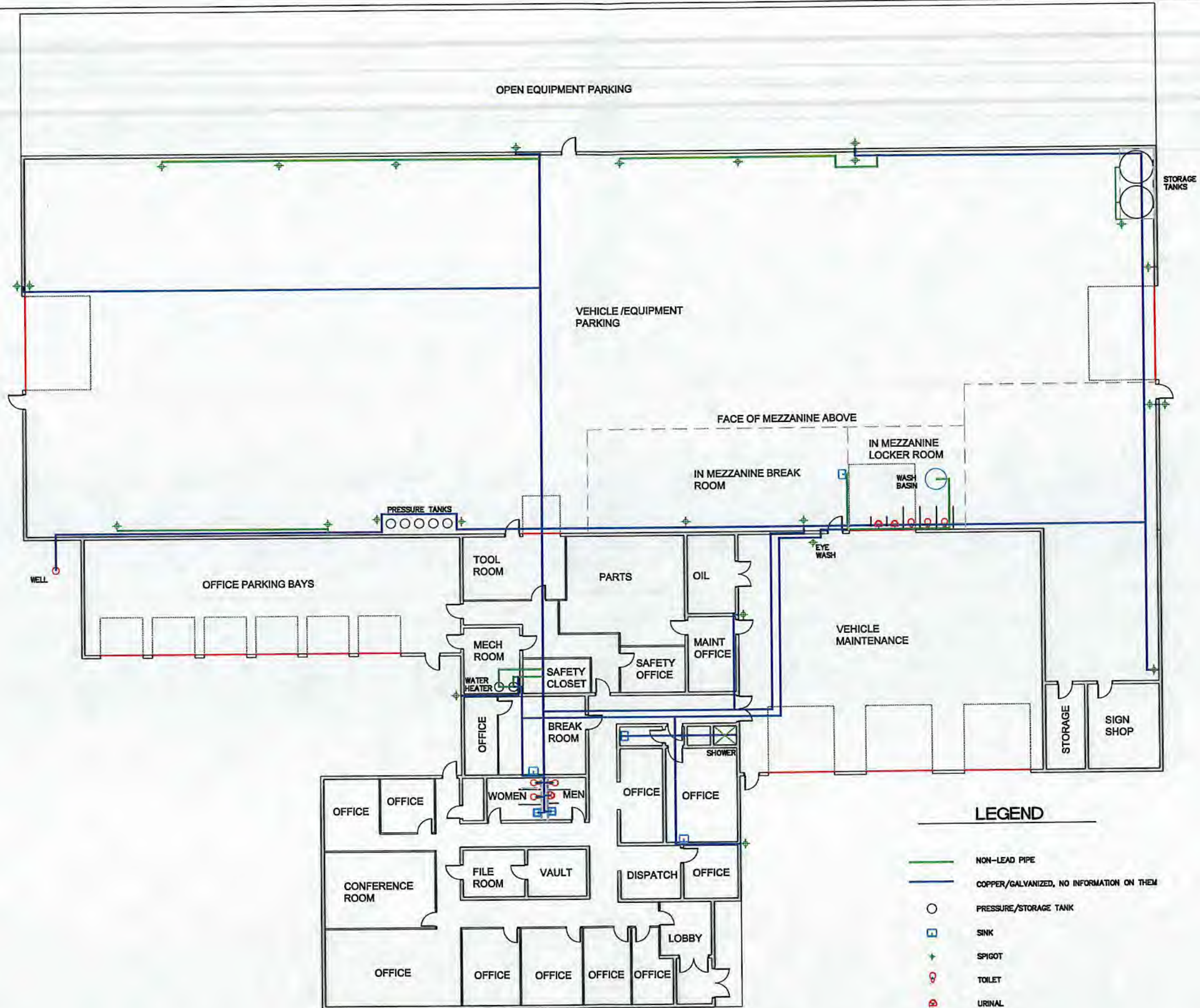
I hope this report is sufficient and helpful. If you have any questions please contact me.

Respectfully,



Toby D Rupp
Operator of Record
Dept. Supervisor
Williams County Engineer's Office

12953 County Road G, Bryan, Ohio 43506
Telephone: (419)•636•2454 Fax: (419)•636•8687
www.wmscoengineer.com



OVERALL FLOOR PLAN
 SCALE : 3/32" = 1'-0"

Todd J. Rcth, P.E., P.S.
 Williams County Engineer
 12853 County Road G
 Bryan, Ohio 43300
 419 634 2454
 Fax: 419 634 3687

PROPOSED FACILITY (ENGINEER'S OFFICE) for
WILLIAMS COUNTY COMMISSIONERS
 WILLIAMS COUNTY, OHIO
WATERLINE SITE PLAN

Work Code:
 ISSUE DATES: