

RE: Carey Village PWS
Report
Lead Mapping
Drinking Water Program
Wyandot County
PWS ID: OH8800012

PWS ID #: OH8800012

Narrative for Lead for the Village of Carey, Ohio

RECEIVED
MAR 06 2017

OHIO E.P.A.
N.W.D.

All water mains in the village of Carey are cast iron, ductile iron, transite, or PVC per original as-built drawings of old water tower and first original water mains from 1894 on. They are depicted on the map in red.

We believe the village had ceased installing lead service lines prior to 1950. Any and all lead lines found are and have been replaced when discovered since 1980.

All of the village streets are labeled in black bold lettering.

Research of village subdivision formation dates revealed approximate date of water main and service line installation as well as home and building construction dates.

The map has the background of the different areas shaded to depict dates of installation.

Yellow background shade: Areas constructed pre 1998

Blue background shade: Areas constructed between 1998 and 2014

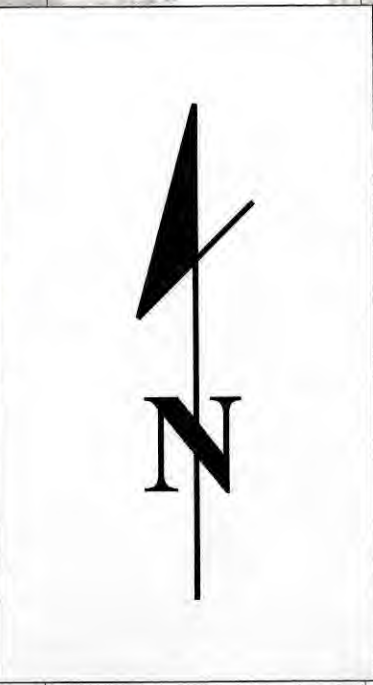
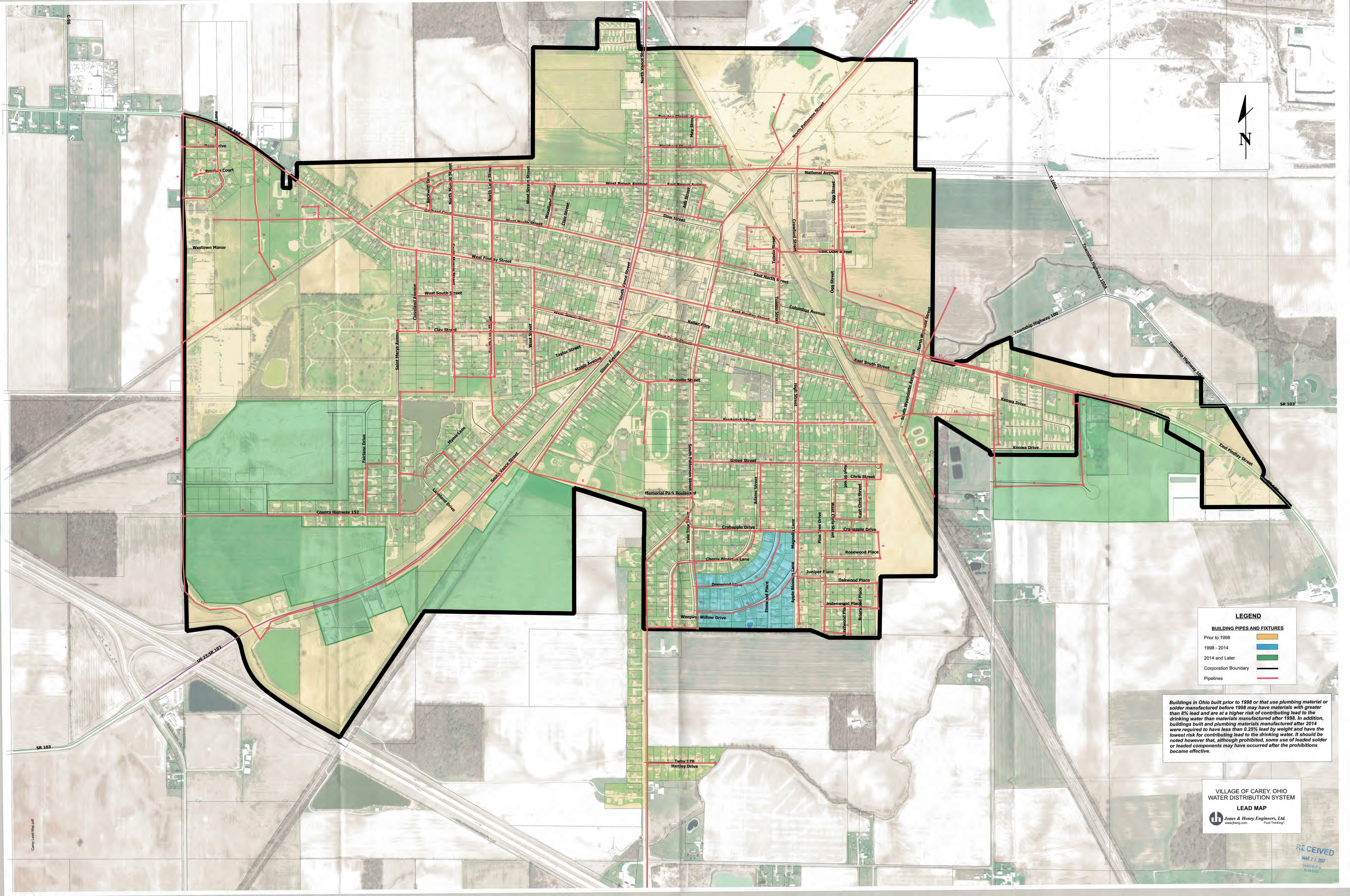
Green background shade: Areas constructed in 2014 and after

The yellow shaded areas contain sections that are likely to have lead service lines.

The blue shaded areas contain no lead service lines but buildings within may have plumbing materials or solder containing 8% or less lead by weight.

The green shaded areas contain no lead service lines and buildings within have plumbing materials or solder containing 25% or less lead by weight.

A copy of our Lead and Copper sample monitoring point ID's (SMP ID) is also included with this map.



LEGEND

BUILDING PIPES AND FIXTURES

Prior to 1998	Orange
1998 - 2014	Blue
2014 and Later	Green
Corporation Boundary	Thick black line
Pipelines	Red line

Buildings in Ohio built prior to 1998 or that use plumbing material or solder manufactured before 1998 may have materials with greater than 8% lead and are at a higher risk of contributing lead to the drinking water than materials manufactured after 1998. In addition, buildings built and plumbing materials manufactured after 2014 were required to have less than 0.25% lead by weight and have the lowest risk for contributing lead to the drinking water. It should be noted however that, although prohibited, some use of lead solder or leaded components may have occurred after the prohibitions became effective.

VILLAGE OF CAREY, OHIO
WATER DISTRIBUTION SYSTEM
LEAD MAP

 Jones & Henry Engineers, Ltd.
www.jheng.com

RECEIVED
MAR 21 2017
OHIO E.P.A.
N.W.D.O.