

RE: LaFarge North America - Paulding
Report
Lead Mapping
Drinking Water Program
Paulding County
PWS ID: OH6332212

RECEIVED

FEB 22 2017

DDAGW - NWDO

LEAD MAPPING

LAFARGE NORTH AMERICA – PAULDING PLANT
11435 County Road 176
Paulding, OH 45879
419-399-4861

PWS ID: OH6332212
Non-Transient/Non-Community Public Water System

FEBRUARY 22, 2017

Narrative:

The Lafarge's Paulding Cement Plant was originally constructed in the mid-1950's by Consolidated Cement Company. The current water well, tank and pump system were constructed during this time period. A majority of the current distribution lines were installed in the 1950's as well. From the Water Well/Tank/Pump system, Lafarge's water distribution lines deliver potable water to the Front Office, Main Office, Mobile Equipment Garage, Laboratory, Systech's Building, and both Packhouses. No other sources or water distribution system is present at the facility. We believe the buried and in-wall portions of distribution lines to be constructed of a mix of cast iron, steel, and soldered copper. All of which are pre-1998 construction. Local knowledge of plumbing fixtures indicate that all fixtures were also installed before 1998 with the exception of the Front Office Men's Restroom (2016), Front Office Women's Restroom (2016), Front Office Sink (2010), and all fixtures in the Systech's Lab/Office Building (2009).

Service lines originate from the Tank & pump room through buried water lines to all buildings indicated on the map. Water is moved cold to the general area of the fixtures before splitting off to a water heater which is located close to the fixture (as needed).

Mapping:

Due to the age of the system, we are assuming that all of Lafarge's distribution and plumbing fixtures were constructed with materials containing lead with the exception of the post-1998 fixtures listed above. On the attached map the Pre-1998 fixtures are highlighted in yellow and the post-1998 fixtures are highlighted in green. The following is a list of fixtures and their mapping labels.

MR001- FH2 Restroom
MR002 - PH1 Restroom
FOMR - Front Office Men's Restroom
FOWR - Front Office Women's Restroom
FOS - Front Office Sink
BRWR - Breakroom Women's Restroom
BRLR# - Breakroom Locker Room Sinks (1-5)
MOWR - Main Office Women's Restroom

MOMR - Main Office Men's Restroom
CFR - Conference Room Sink
MEG - Mobile Equipment Garage Sink
ANLY - Analytical Lab Sink
PHYS - Physical Lab Sink
MIXL - Mix Lab Sink
FRMO - Foreman's Office Sink
TANK - Well Tank Lid
EYE# - Eye Wash Stations (1-3)
SYST# - Systech Restroom (1-3)
CRMR - Controlroom Men's Restroom
FAR - First Aid Room

Sampling:

Lafarge plans to use following sampling locations which are all NT/NC Tier 2 due to the age of the service lines:

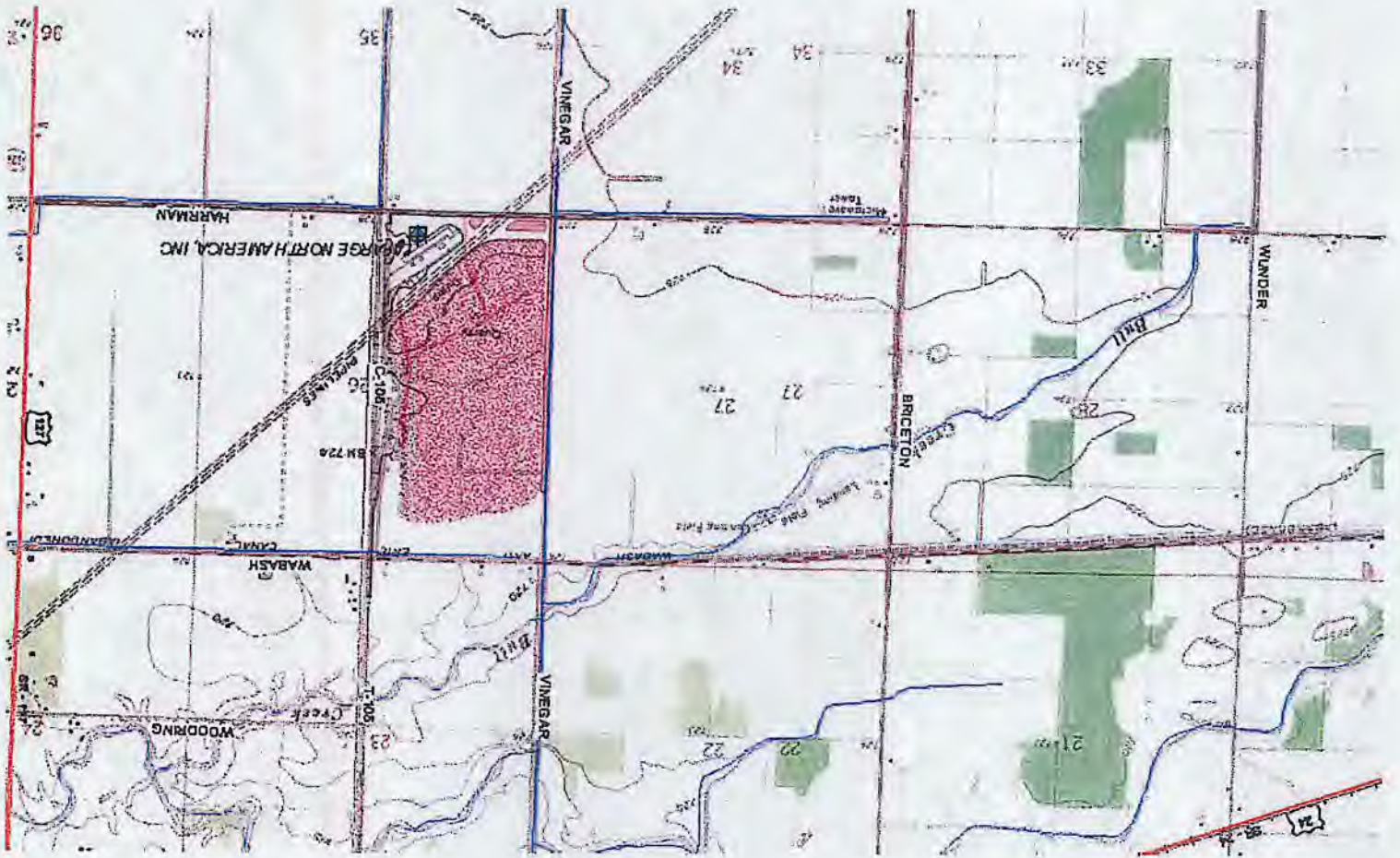
ANLY - Analytical Lab Sink
FAR - First Aid Room
BRWR - Breakroom Women's Restroom
FOMR - Front Office Men's Restroom
FOS - Front Office Sink

Contact Information:

Tim Weible - 419-784-6322, tim.weible@lafargeholcim.com
John Judd - 260-760-2300, john.judd@lafargeholcim.com

Attachments:

Lead Map
Regional Map
Sampling Monitoring Point Spreadsheet



Lead Map

RECEIVED

MAR 06 2017

DDAGW - NWDO



- LC204 - MR001 - PH2 Restroom
- LC205 - MR002 - PH1 Restroom
- FOMR - Front Office Men's Restroom
- FOWR - Front Office Women's Restroom
- FOS - Front Office Sink
- LC201 - BRWR - Breakroom Women's Restroom
- BRLR# - Breakroom Locker Room Sinks (1-5)
- LC203 - MOWR - Main Office Women's Restroom
- MOMR - Main Office Men's Restroom
- CFR - Conference Room Sink
- MEG - Mobile Equipment Garage Sink
- LC202 - ANLY - Analytical Lab Sink
- PHYS - Physical Lab Sink
- MIXL - Mix Lab Sink
- FRMO - Foreman's Office Sink
- TANK - Well Tank Lid
- EYE# - Eye Wash Stations (1-3)
- SYST# - Systech Restroom (1-3)
- CRMR - Controlroom Men's Restroom
- FAR - First Aid Room



Green - Post 1998

Yellow = Pre 1998

Note: All distribution lines were installed before 1998.

Map is not to scale.

**LAFARGE
NORTH AMERICA
PAULDING PLANT**
11435 Road 176
Paulding, OH 45879
419-399-4861

PWS ID: OH6332212
Non-Transient/Non-Community
Public Water System