

RE: Clearfork MHP PWS
Report
Lead Mapping
Drinking Water Program
Richland County
PWS ID: OH7000612

RECEIVED

MAR 21 2017

DDAGW - NWDO

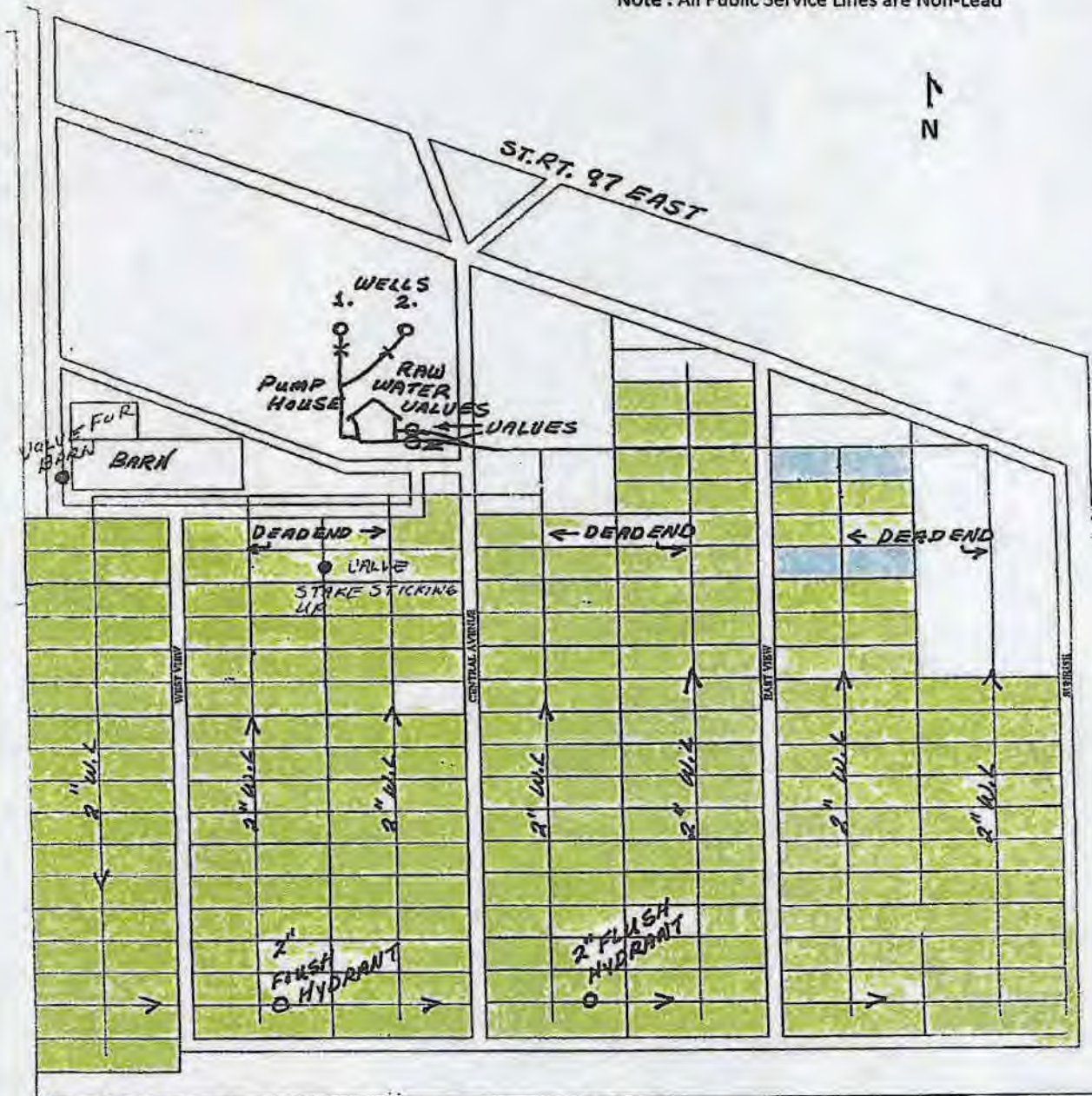
Clearfork Mobile Home Park - Lead Mapping

Year Built

1998 or before (Likely Lead Solder)

After 1998 (Nonlead solder)

Note : All Public Service Lines are Non-Lead



Buildings in Ohio built prior to 1998 or that use plumbing material or solder manufactured before 1998 may have materials with greater than 8% lead and are at a higher risk of contributing lead to the drinking water than materials manufactured after 1998. In addition, buildings built and plumbing materials manufactured after 2014 were required to have less than 0.25% lead by weight and have the lowest risk for contributing lead to the drinking water. It should be noted however that, although prohibited, some use of leaded solder or leaded components may have occurred after the prohibitions became effective.

"2017"