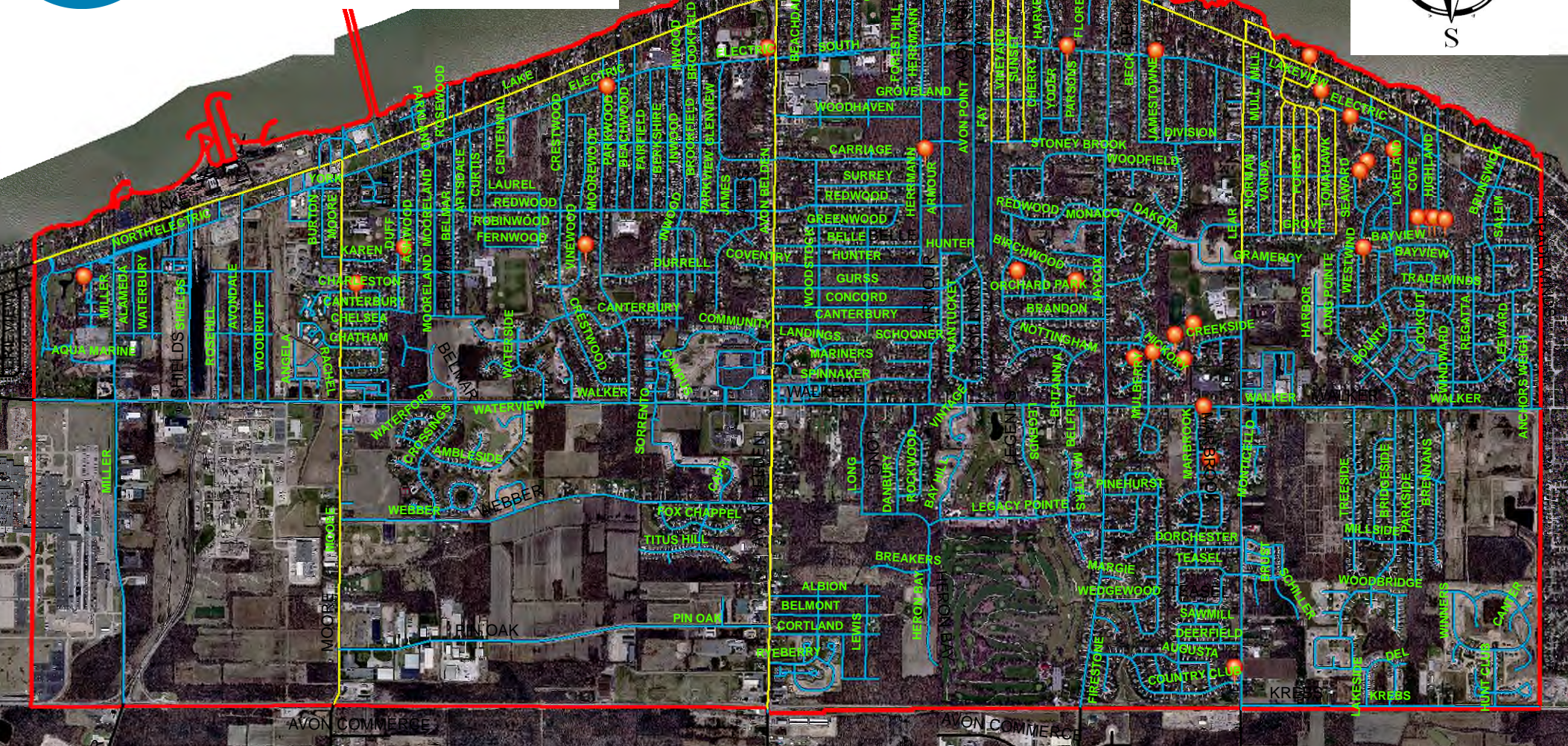
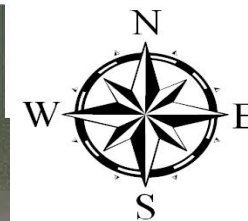




# Avon Lake Regional Water



The information provided by Avon Lake Regional Water represents the current understanding regarding public side lead service lines and/or possibility public side of lead service lines connected to the water distribution system.

#### **NOTE:**

- (1) Lead is not naturally present in the water leaving the treatment plant. It is the result of corrosion of materials in contact with the water, predominantly in the customer's home plumbing. Shortening the time the water sits in contact with the plumbing reduces the chances for lead in water.
- (2) It is Avon Lake Regional Water policy to replace lead service lines whenever they are identified.
- (3) High lead solder was banned in Ohio in 1998, and lead containing fixtures were banned in 2014. Homes built prior to 2014 are likely to contain some amount of lead in their fixtures, solder, or the customer's (private) side of the service line.
- (4) Since the beginning of lead sampling in 1993, the organization has been in compliance with Lead and Copper rule.

YELLOW LINES represents areas with possibility for lead service lines  
pins.

BLUE LINES represents areas where lead service lines were not installed or have been removed

ORANGE Pins represent lead sample