

RE: Ohio City Village
Report
Lead Mapping
Drinking Water Program
Van Wert County
PWS ID: OH8100412

Buildings in Ohio built prior to 1998 or that use plumbing material or solder manufactured before 1998 may have materials with greater than 8% lead and are at a higher risk of contributing lead to the drinking water than materials manufactured after 1998. In addition, buildings built and plumbing materials manufactured after 2014 were required to have less than 0.25% lead by weight and have the lowest risk for contributing lead to the drinking water. It should be noted however that, although prohibited, some use of leaded solder or leaded components may have occurred after the prohibitions became effective.

RECEIVED
APR 10 2017
DDAGW - NWDO

VILLAGE OF OHIO CITY, OHIO
WATER DISTRIBUTION MAP
SW QUADRANT

MAP LEGEND

DISTRIBUTION LINES, VALVES

- 12" MAIN LINE, VALVE
- 8" MAIN LINE, VALVE
- 6" MAIN LINE, VALVE
- 4" MAIN LINE, VALVE
- 2" MAIN LINE, VALVE

TRANSMISSION LINES, VALVES

- 6" LINE, VALVE
- 4" LINE, VALVE

OTHER SYMBOLS

- HYDRANT
- VALVE



N
↑

N
↑

↑
Lead Free Service Lines & Plumbing Built After 1996

S
↓

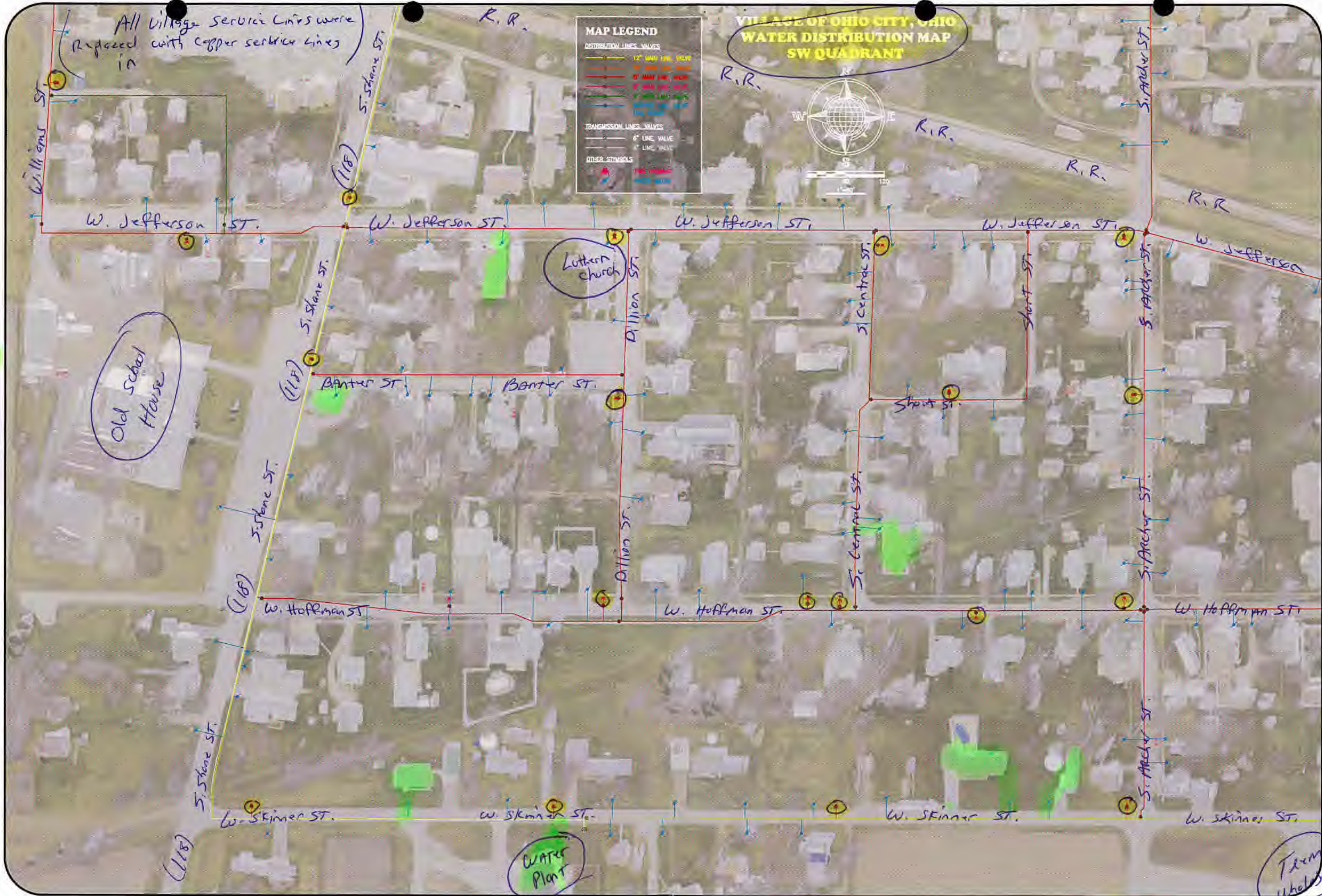
Team whole sale

All Village Service Lines were replaced with copper service lines in

Old School House

Lutheran church

Water Plant



VILLAGE OF OHIO CITY, OHIO
WATER DISTRIBUTION MAP
NW QUADRANT

MAP LEGEND

DISTRIBUTION LINES, VALVES

- 12" MAIN LINE, VALVE
- 10" MAIN LINE, VALVE
- 8" MAIN LINE, VALVE
- 6" MAIN LINE, VALVE
- 4" MAIN LINE, VALVE
- SERVICE LINE, VALVE (ALL SIZES)

TRANSMISSION LINES, VALVES

- 8" LINE, VALVE
- 4" LINE, VALVE

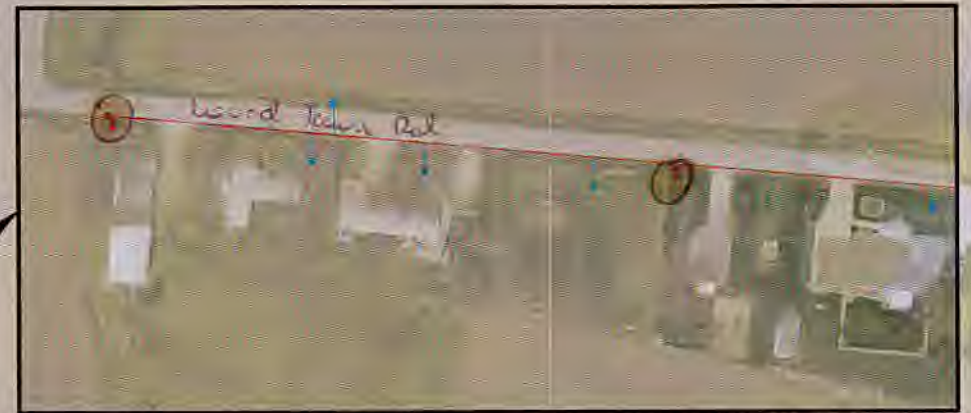
OTHER SYMBOLS

- FIRE HYDRANT
- WATER METER



All Village Service Lines were Replaced in
with Copper service Lines.

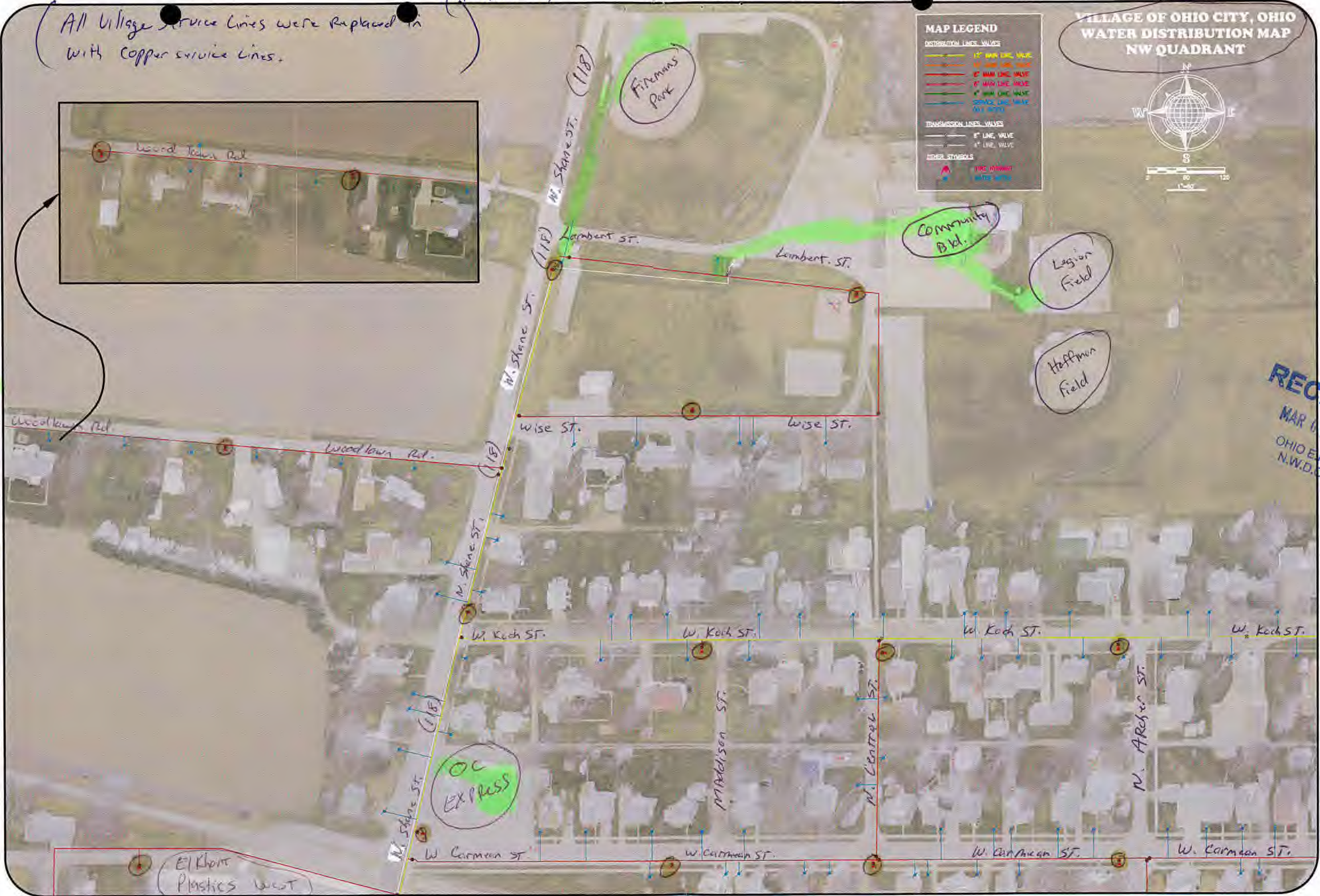
(Heath DOT)



Cemetery

Lead Free Service Lines & Plumbing Built After 1996

RECEIVED
MAR 08 2017
OHIO EPA
N.W.D.D.



S

S

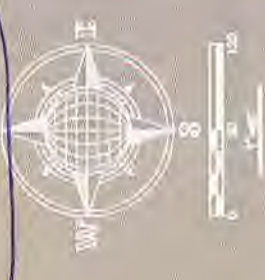
↓

↓

Trailer Park



VILLAGE OF OHIO CITY, OHIO
WATER DISTRIBUTION MAP
NE QUADRANT



(All Village Service Lines were Replaced in with copper service lines.)

MAP LEGEND

DISTRIBUTION LINES - VALVES

- 12" LINE VALVE
- 8" LINE VALVE
- 6" LINE VALVE
- 4" LINE VALVE
- 3" LINE VALVE
- 2" LINE VALVE
- 1.5" LINE VALVE
- 1" LINE VALVE
- 0.75" LINE VALVE
- 0.5" LINE VALVE
- 0.25" LINE VALVE

TRANSMISSION LINES - VALVES

- 8" LINE VALVE
- 6" LINE VALVE
- 4" LINE VALVE
- 3" LINE VALVE
- 2" LINE VALVE
- 1.5" LINE VALVE
- 1" LINE VALVE
- 0.75" LINE VALVE
- 0.5" LINE VALVE
- 0.25" LINE VALVE

UTILITY SYMBOLS

- Gas (Red)
- Water (Blue)
- Electric (Black)
- Sanitary (Green)

Market



Lead
Flow
Service
Lines
Plumbing
Built
1996





MAP LEGEND

DISTRIBUTION LINES, VALVES

- 12" MAIN LINE, VALVE
- 8" MAIN LINE, VALVE
- 6" MAIN LINE, VALVE
- 4" MAIN LINE, VALVE
- 2" MAIN LINE, VALVE
- 1" MAIN LINE, VALVE

TRANSMISSION LINES, VALVES

- 6" LINE, VALVE
- 4" LINE, VALVE

OTHER SYMBOLS

- RED DOT: FIRE HYDRANT
- BLUE DOT: WATER METER

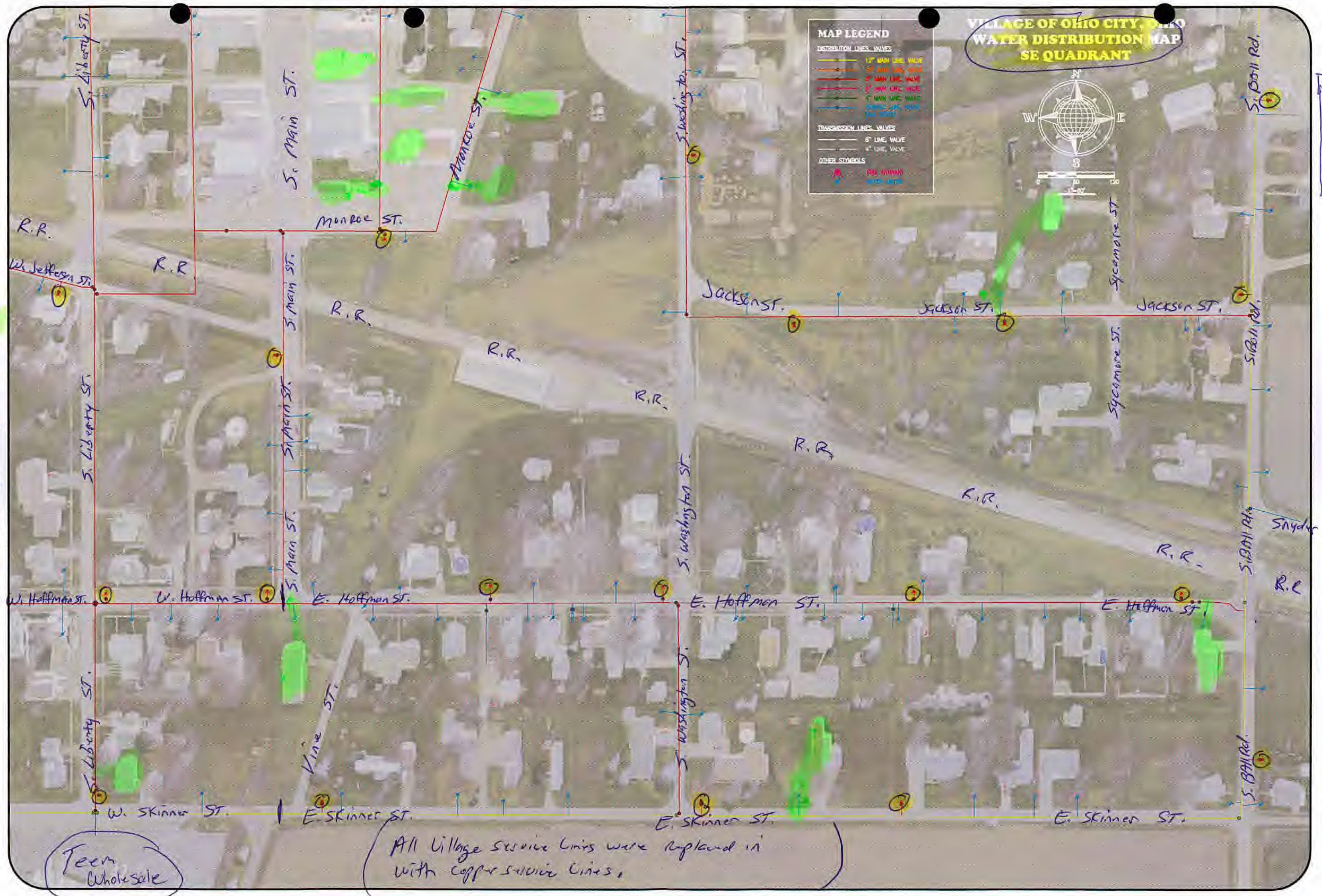
**VILLAGE OF OHIO CITY, OHIO
WATER DISTRIBUTION MAP
SE QUADRANT**



Eikhart
Plastics
EAST

↑
Lead
Flower
Service
Lines
&
Plumbing
&
Built
After
1996

W
W
T
P



Teen
Wholesale

All Village Service Lines were replaced in
with copper service lines.

