

RE: Lincolnview K-12 School  
Report  
Lead Mapping  
Drinking Water Program  
Van Wert County  
PWS ID: OH8137212

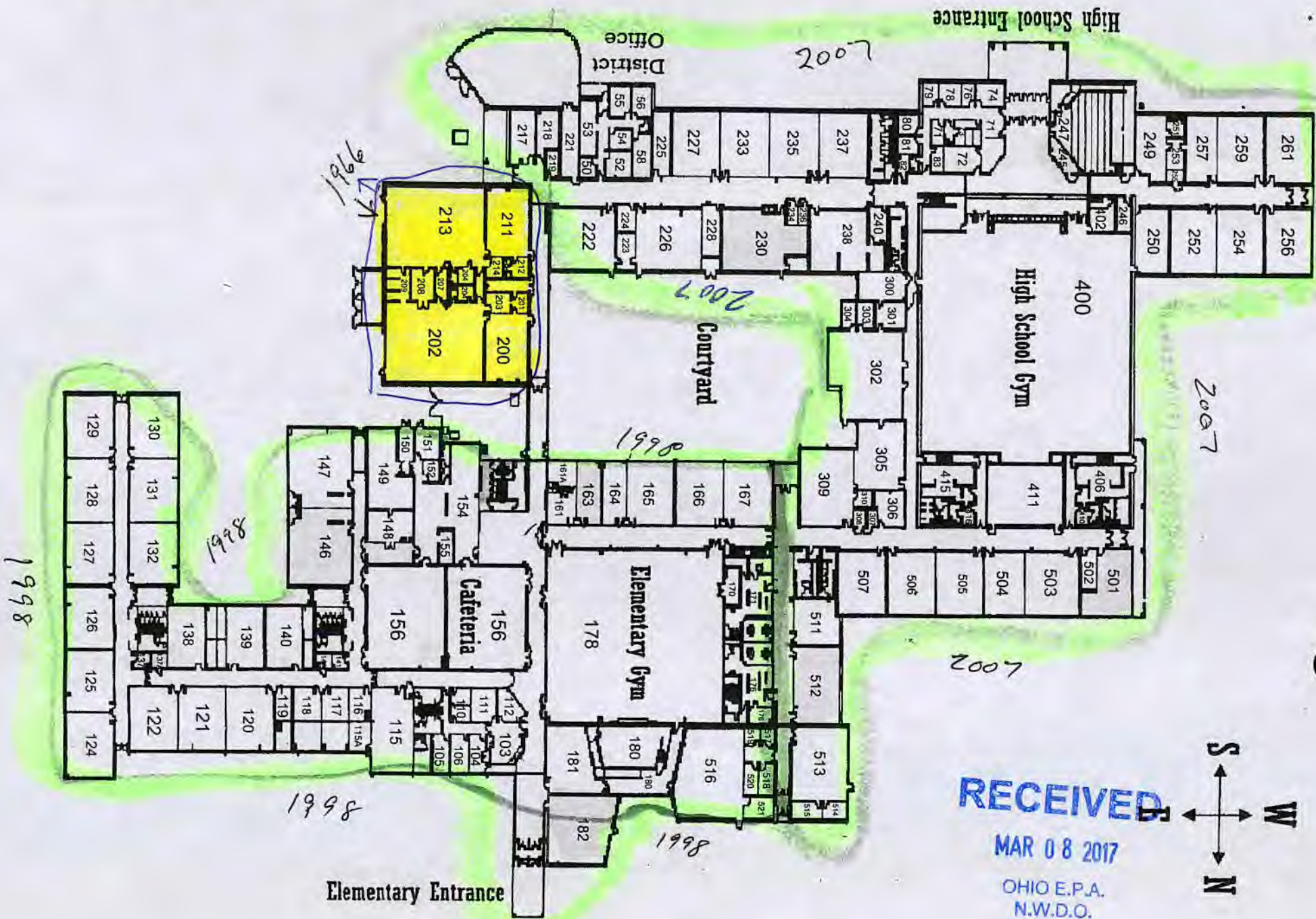
LINCOLNVIEW LOCAL SCHOOLS

RECEIVED  
APR 10 2017  
DDAGW - NWDO

Buildings in Ohio built prior to 1998 or that use plumbing material or solder manufactured before 1998 may have materials with greater than 8% lead and are at a higher risk of contributing lead to the drinking water than materials manufactured after 1998. In addition, buildings built and plumbing materials manufactured after 2014 were required to have less than 0.25% lead by weight and have the lowest risk for contributing lead to the drinking water. It should be noted however that, although prohibited, some use of leaded solder or leaded components may have occurred after the prohibitions became effective.



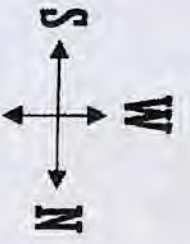
Lincolnview Local Schools



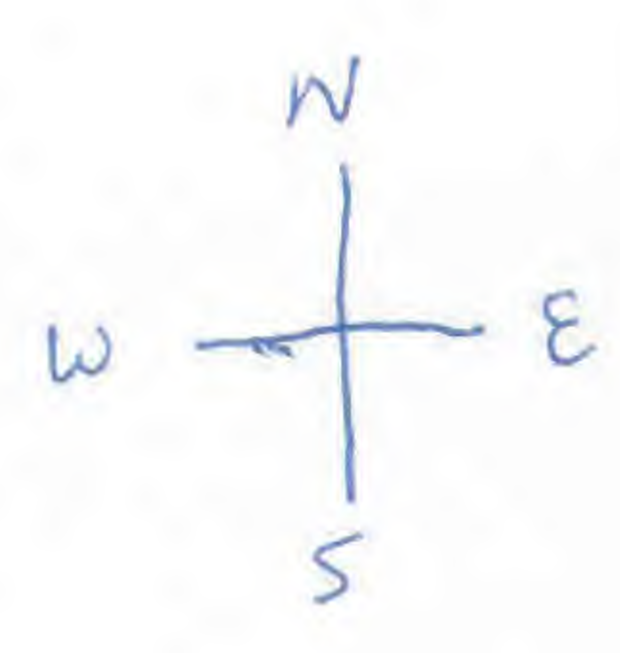
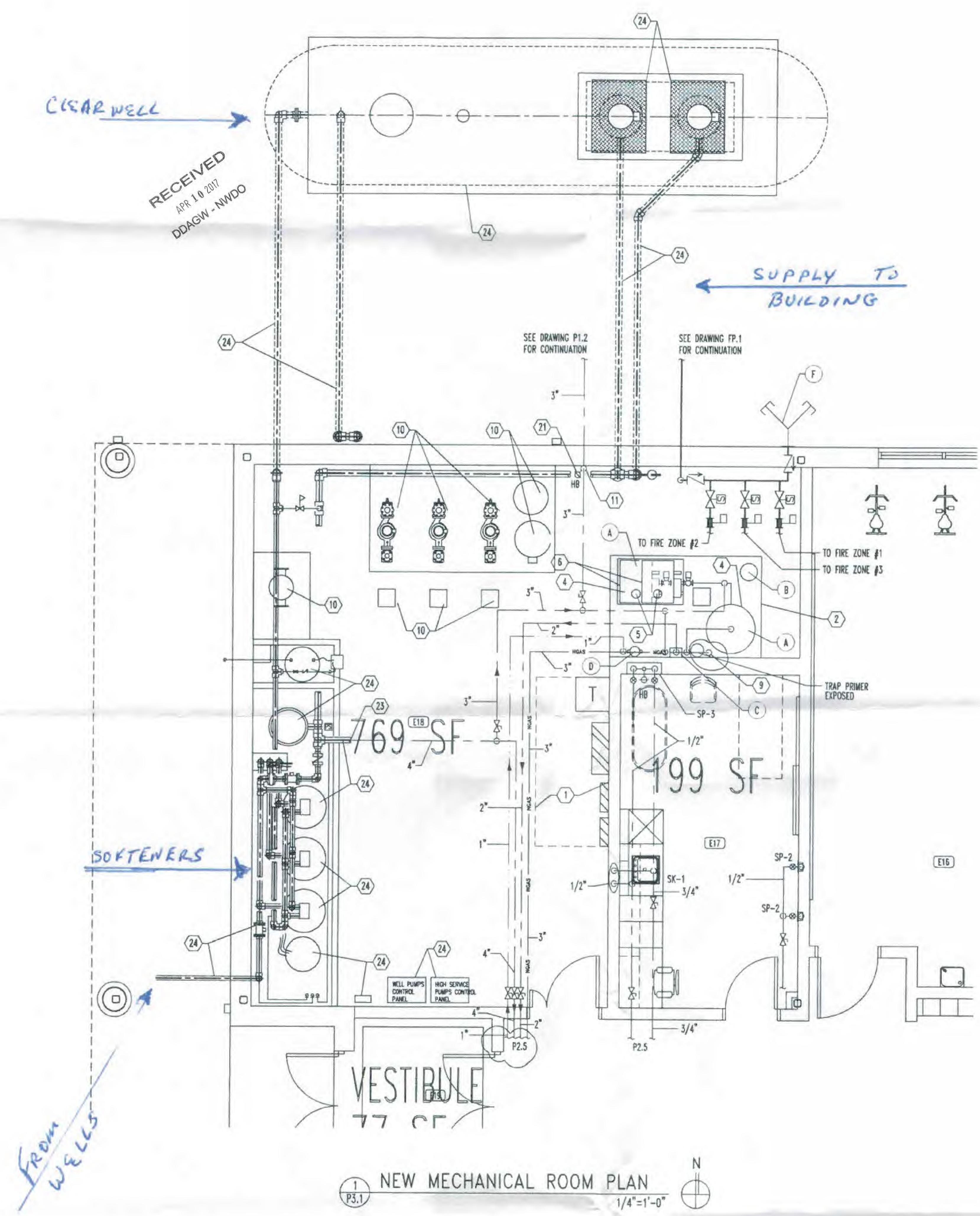
RECEIVED

MAR 08 2017

OHIO E.P.A.  
N.W.D.O.

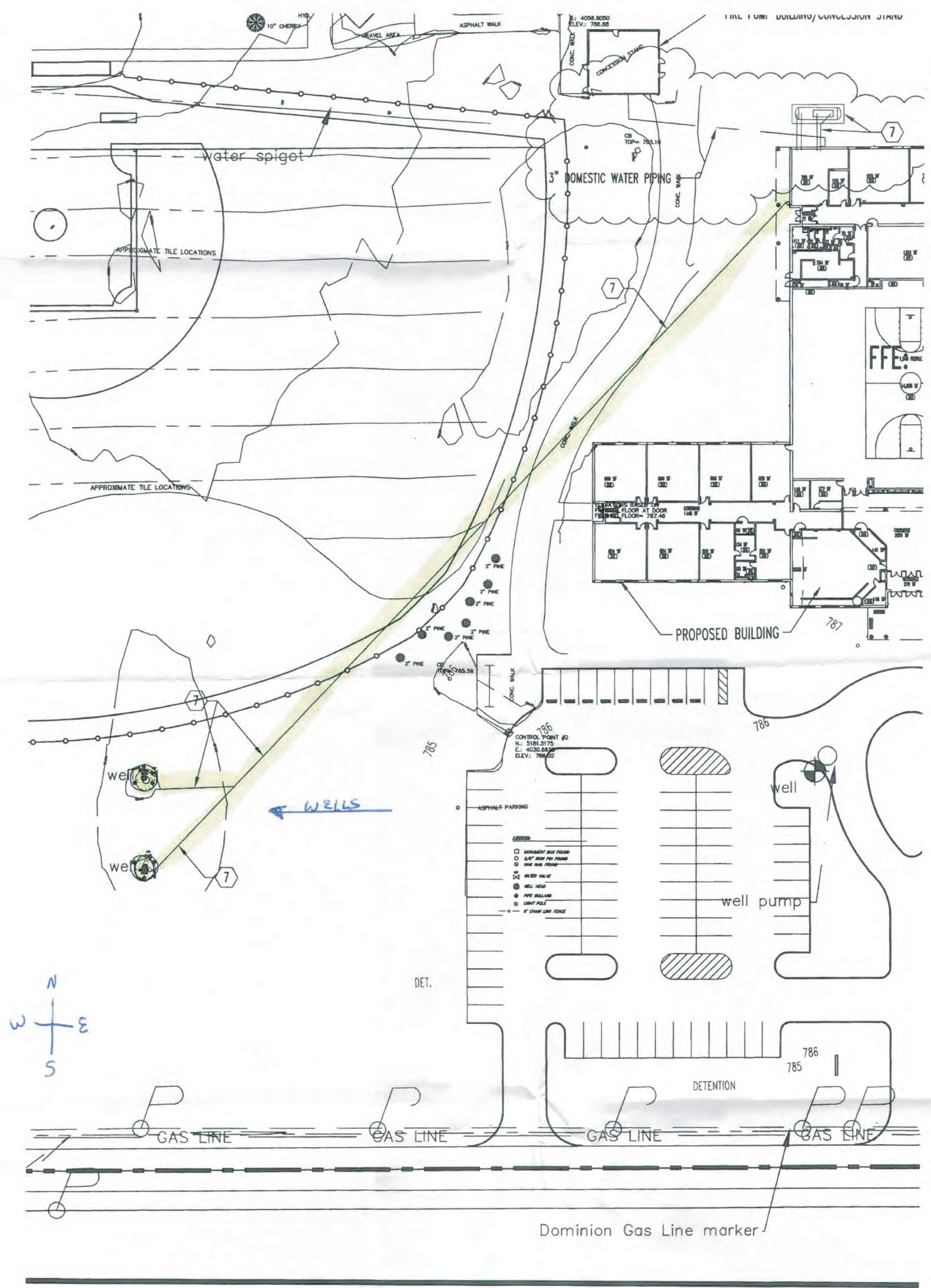




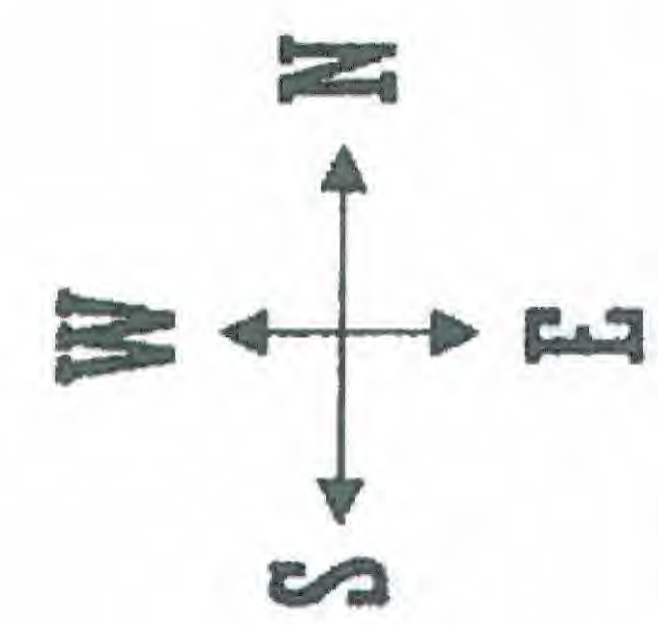




RECEIVED  
APR 10 2017  
DDAGW - NWDO







LOOK AT PAGE #2

CLEARWELL

SOFTENERS

FROM WELLS

TO PAGE #3

RECEIVED  
APR 10 2017  
DDAGW - NWDO

- COLD POTABLE
- HOT POTABLE
- RAW FROM WELLS
- LEAD AREA

4-10-17 FRED FISHER