

RE: Bradner Village Water  
Report  
Lead Mapping  
Drinking Water Program  
Wood County  
PWS ID: OH8700412

# VILLAGE OF BRADNER

## PWS 8700412

### LEAD MAPPING 2017

**MARCH 2, 2017**

The Village of Bradner has prepared a map showing the locations of potential areas in the Village of Bradner distribution system that may contain lead service lines or lead solder. This map is based off system maintenance records, visual verifications, approximate age of subdivisions, and operator experience.

The Village of Bradner has a capital improvement plan to replace all waterlines and upgrade at least one size when replaced. The areas that are replaced, are replaced with class 52 ductile iron, all service lines are replaced with 1" k copper (unless the service line has been previously replaced). The following areas have been replaced:

1991 – Caldwell Rd. - When new water tower constructed, new main from tower to Caldwell Rd. 8" D.I. tyton style push on joint.

1993 – Caldwell Rd. & Church St. – Replaced line along Caldwell Rd. from 236 Caldwell Rd. to Church, down Church St. to W. Crocker St., 8" D.I. tyton push on joint.

1997 – Plin St. & Cherry St. – Replaced line along Plin St. north of Church St. to Cherry St., then down Cherry St. west to Maple St.

1999 – Euclid Ave. & Toledo St. – Replaced line along Euclid Ave. starting at Crocker St. to alley, added line along alley to Toledo St., then down Toledo St. to Crocker St.

2001 – Lightner St. – Replaced line along Lightner St. from East St. to Evans St.

2006 – Plin St. – Replaced line along Plin St. from Crocker St. to Church St.

2006 – AWW extension off Blackman Rd. – added new line from Blackman Rd. to south side of AWW new addition for domestic service and fire service.

2008 – Blackman Rd – Replaced line from Crocker St to corp. line

2010 – Maple St. & Cherry St. – Replaced line from Church St. to Cherry St along Maple St., from Maple St to East Parklane, along Cherry St.

2011 Plin St. & AWW loop – Replaced line along Plin St. from Crocker St. to south side of property, across to existing extension from 2008.

2012 – Douglas Rd. – Replaced from Church St. to Corp. Limit.

2013 – S. Main St. Phase 1 – Replaced from Crocker St. to Edmonds Ave., along S. Main St.

2015 – S. Main St. Phase 2 – Replaced from Edmonds Ave. to James St., along S. Main St.

2015 – James St. – Replaced from S. Main St. to East St. along James St.

2015 – Raw Water Line Replaced From water tower to new plant, to each well.

2016 – N. Main St. Phase 3 – Replaced from Caldwell Rd. to Lightner St. along N. Main St.

2017 – N. Main St. Phase 4 – to be bid this year, replace from Lightner St. to Crocker St. along N. Main St.

The map shows yellow dots for areas that still has cast iron piping with leaded joints. Areas of the system that contain Asbestos Cement Pipe have copper service lines.

Maintenance records do not indicate any lead service lines, in my previous 25 years of experience I have not found any lead service lines.

The Village does not track individual household plumbing, the villages responsibility ends at the meter pit, most residences have a meter pit outside at or close to the edge of the right of way. For future updates of this map the village will try to obtain information from the individual residences and plot the findings on a GIS Map.

Buildings in Ohio built prior to 1998 or that use plumbing material or solder manufactured before 1998 may have materials with greater than 8% lead and are at a higher risk of contributing lead to the drinking water than materials manufactured after 1998. In addition, buildings built and plumbing materials manufactured after 2014 were required to have less than 0.25% lead by weight and have the lowest risk for contributing lead to the drinking water. It should be noted however that, although prohibited, some use of leaded solder or leaded components may have occurred after the prohibitions became effective.


**VERIFICATION FORM FOR COMMUNITY PUBLIC WATER SYSTEMS  
CLAIMING NO LEAD SERVICE LINES**

The owner or operator of all community public water systems must identify and map areas of their distribution system that are known or are likely to contain lead service lines. Systems must submit a copy of the applicable map to the Ohio Department of Health and the Ohio Department of Job and Family Services. Systems must also submit a report to the director containing at least both of the following: (1) The applicable map with narrative, and (2) A list of sampling locations used to collect samples as required by Ohio Revised Code (ORC) Section 6109.121 and any rules adopted thereunder, including contact information for the owner and occupant of each sampling site.

Should a water system determine no lead service lines exist in their distribution system, they must provide information stating they reviewed, at the minimum, historical permit records and local ordinances, distribution maintenance records and information pertaining to installation dates or materials for all services lines. This information must be verified below.

I HEREBY CERTIFY THAT THE FOLLOWING METHOD(S) WERE USED TO DETERMINE NO LEAD SERVICE LINES EXIST IN THIS WATER SYSTEM'S DISTRIBUTION SYSTEM, AS REQUIRED BY ORC 6109.121(F):

<b>LEAD SERVICE LINE VERIFICATION</b>	
<b>This PWS states they have no lead service lines and has reviewed the following information (select one or more of the following):</b>	
<input checked="" type="checkbox"/>	Historical permit records and/or local ordinances
<input checked="" type="checkbox"/>	Distribution maintenance records (i.e. meter replacement, waterline break repairs)
<input checked="" type="checkbox"/>	Information pertaining to installation dates for all service lines (i.e. after 1986 when lead services lines were banned)
<input type="checkbox"/>	Service line material of all service lines is known (i.e. all service lines are known to be PVC)

  
 Signature of Responsible Person 4-5-17  
 Date  
 Brian J. Linkey Utility Syst.  
 Printed Name and Title of Responsible Person

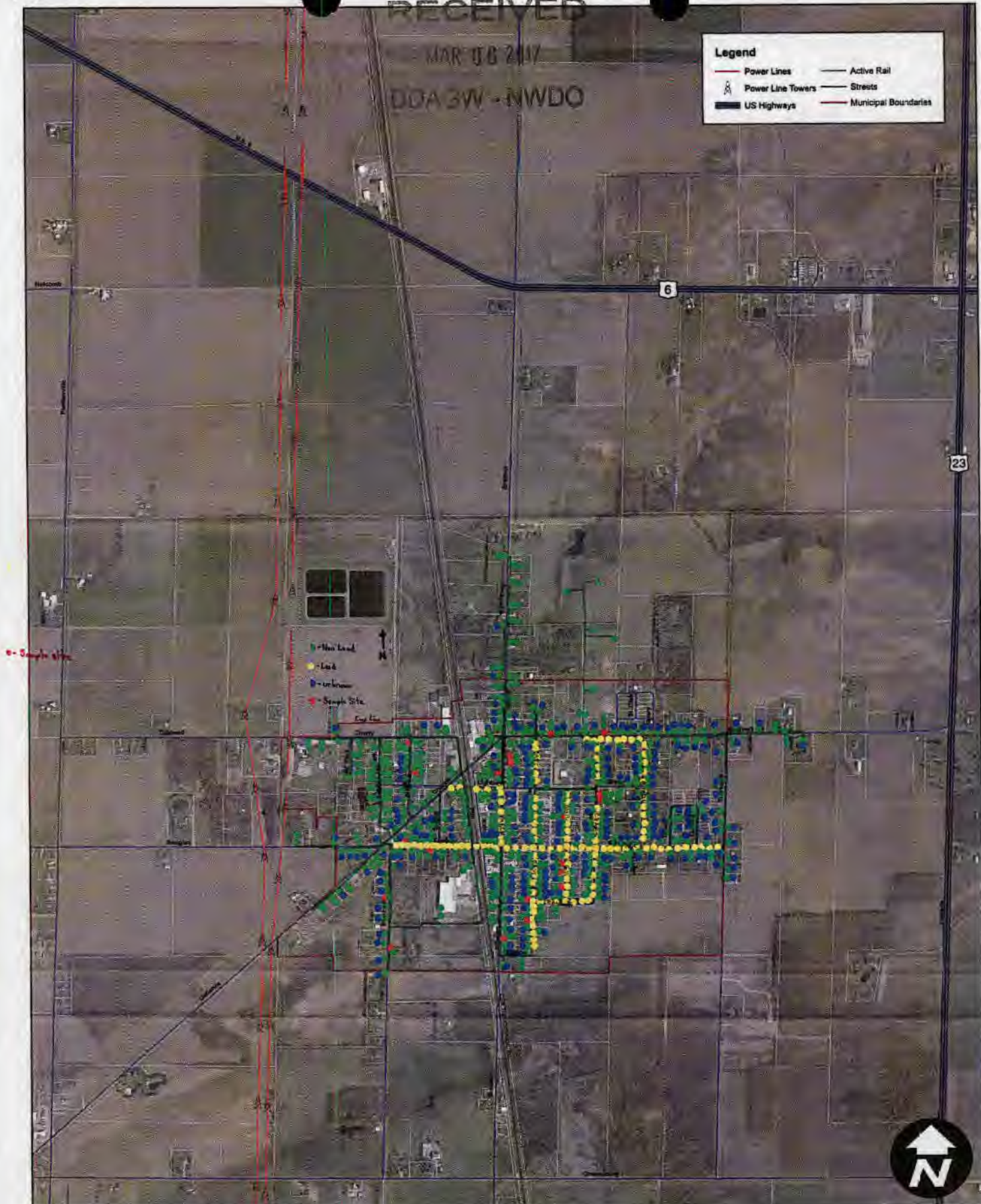
PWS NAME: Village of Bradner  
 PWS ID: OH 8700412  
 COUNTY: WOOD

<p><b>For Ohio EPA use only:</b></p> <p>Date Verification Rec'd: _____</p>
--

RECEIVED  
MAR 06 2017  
DDA 3W - NWDO

**Legend**

Power Lines	Active Rail
Power Line Towers	Streets
US Highways	Municipal Boundaries



0 - Sample Site

Map Key

- New Land
- Leak
- Unknown
- Sample Site

0 0.125 0.25 0.5 Miles

# Proposed Five Year Capital Improvements

