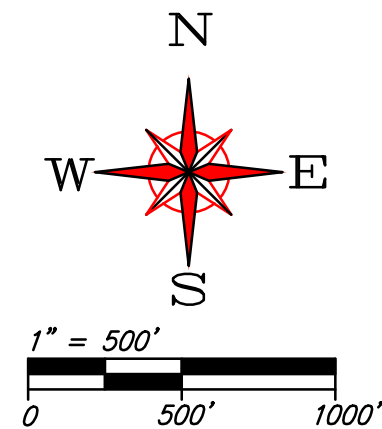


Because it is practically impossible to determine the lead content of an installed fixture, fitting or pipe, it should be assumed that the manufacture or installation date is the primary indicator of the lead content. Therefore, the characteristics of buildings and piping solder or fixtures would be buildings in Ohio built prior to 1998 or that use plumbing material or solder manufactured before 1998 may have materials with greater than 8% lead and are at a higher risk of contributing lead to the drinking water than materials manufactured after 1998. In addition, buildings built and plumbing materials manufactured after 2014 were required to have less than 0.25% lead by weight and have the lowest risk for contributing lead to the drinking water. It should be noted however that, although prohibited, some use of leaded solder or leaded components may have occurred after the prohibitions became effective. These homes and/or businesses have been shown hereon with shading as depicted in the Building Legend for the various year ranges for which they were built as explained above. This however does not reflect the possibility of any plumbing upgrades that may have been completed after these buildings were built. Further studies would have to be completed to determine if any such upgrades have been done.



WATERLINE LEGEND

- Exist. 2" W.L. ————
- Exist. 4" W.L. ————
- Exist. 6" W.L. ————
- Exist. 8" W.L. ————
- Exist. 10" W.L. ————
- Exist. 12" W.L. ————

SERVICE LEGEND

- ▲ Possible Lead Solder in House
- Possible Lead Service Line
- Plastic with Brass Fittings from Main to Meter Before 2014
- Copper Service Line Before 2014
- Iron Pipe Service Line Main to Meter
- ✕ Lead Sample Sites

BUILDING LEGEND

- Homes & Businesses Built Before 1998
- Homes & Businesses Built From 1998 to 2014
- Homes & Businesses Built After 2014

VILLAGE OF LEWISBURG PREBLE COUNTY, OHIO

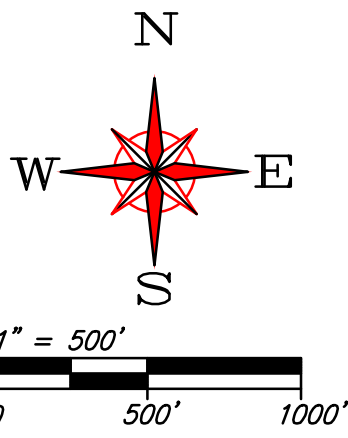
WATER MAPPING LEAD SERVICE LINES & FIXTURES

Water Mains consist of Ductile Iron,
Sand Cast & PVC (C-900)

COMMUNITY SYSTEM (PWS ID #OH 6800812)

INDEX OF SHEETS

| | | | |
|--|--|--|---------------|
| | KRAMER & ASSOCIATES Surveyors, Engineers, & Design Consultants 101 N. Barnes St., Lima, Ohio 43031 (607) 406-1100 FAX (607) 406-0912 | Project No. 17-007 Date: 02/20/17 Drawn By: MPT Checked By: DEK Drawing No. D-8513 | 1 of 10 |
| | | | |
| | | | |
| | | | |



WATERLINE LEGEND

- Exist. 2" W.L. ———
- Exist. 4" W.L. — — —
- Exist. 6" W.L. - - - -
- Exist. 8" W.L. - - - -
- Exist. 10" W.L. ———
- Exist. 12" W.L. ———

SERVICE LEGEND

- ▲ Possible Lead Solder in House
- Possible Lead Service Line
- Plastic with Brass Fittings from Main to Meter Before 2014
- Copper Service Line Before 2014
- Iron Pipe Service Line Main to Meter
- ✕ Lead Sample Sites

BUILDING LEGEND

- Homes & Businesses Built Before 1998
- Homes & Businesses Built From 1998 to 2014
- Homes & Businesses Built After 2014

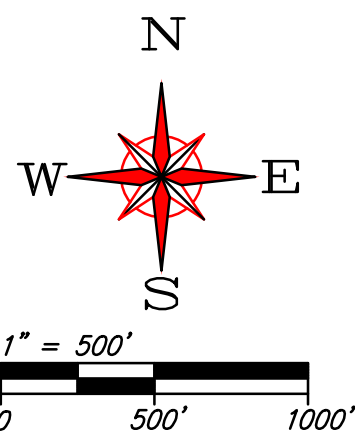
VILLAGE OF
LEWISBURG
PREBLE COUNTY, OHIO

WATER MAPPING
LEAD SERVICE LINES & FIXTURES

Because it is practically impossible to determine the lead content of an installed fixture, fitting or pipe, it should be assumed that the manufacture or installation date is the primary indicator of the lead content. Therefore, the characteristics of buildings and piping solder or fixtures would be buildings in Ohio built prior to 1998 or that use plumbing material or solder manufactured before 1998 may have materials with greater than 8% lead and are at a higher risk of contributing lead to the drinking water than materials manufactured after 1998. In addition, buildings built and plumbing materials manufactured after 2014 were required to have less than 0.25% lead by weight and have the lowest risk for contributing lead to the drinking water. It should be noted however that, although prohibited, some use of leaded solder or leaded components may have occurred after the prohibitions became effective. These homes and/or businesses have been shown hereon with shading as depicted in the Building Legend for the various year ranges for which they were built as explained above. This however does not reflect the possibility of any plumbing upgrades that may have been completed after these buildings were built. Further studies would have to be completed to determine if any such upgrades have been done.

| | | | | | | | | | | | |
|---|---|-------------|--------|------|----------|----------|-----|------------|-----|-------------|--------|
| COMMUNITY SYSTEM (PWS ID #OH 6800812) | | | | | | | | | | | |
| US 40 WEST | | | | | | | | | | | |
|  KRAMER & ASSOCIATES Surveyors, Engineers, & Design Consultants 101 N. Harris St., Lewis, Ohio 44044 (419) 496-1122 FAX (419) 496-6912 | <table border="1"><tr><td>Project No.</td><td>17-007</td></tr><tr><td>Date</td><td>02/20/17</td></tr><tr><td>Drawn By</td><td>MPT</td></tr><tr><td>Checked By</td><td>DEK</td></tr><tr><td>Drawing No.</td><td>D-8514</td></tr></table> | Project No. | 17-007 | Date | 02/20/17 | Drawn By | MPT | Checked By | DEK | Drawing No. | D-8514 |
| Project No. | 17-007 | | | | | | | | | | |
| Date | 02/20/17 | | | | | | | | | | |
| Drawn By | MPT | | | | | | | | | | |
| Checked By | DEK | | | | | | | | | | |
| Drawing No. | D-8514 | | | | | | | | | | |
|  | 2 of 10 | | | | | | | | | | |

Because it is practically impossible to determine the lead content of an installed fixture, fitting or pipe, it should be assumed that the manufacture or installation date is the primary indicator of the lead content. Therefore, the characteristics of buildings and piping solder or fixtures would be buildings in Ohio built prior to 1998 or that use plumbing material or solder manufactured before 1998 may have materials with greater than 8% lead and are at a higher risk of contributing lead to the drinking water than materials manufactured after 1998. In addition, buildings built and plumbing materials manufactured after 2014 were required to have less than 0.25% lead by weight and have the lowest risk for contributing lead to the drinking water. It should be noted however that, although prohibited, some use of leaded solder or leaded components may have occurred after the prohibitions became effective. These homes and/or businesses have been shown hereon with shading as depicted in the Building Legend for the various year ranges for which they were built as explained above. This however does not reflect the possibility of any plumbing upgrades that may have been completed after these buildings were built. Further studies would have to be completed to determine if any such upgrades have been done.



WATERLINE LEGEND

- Exist. 2" W.L. ———
- Exist. 4" W.L. — — —
- Exist. 6" W.L. - - - -
- Exist. 8" W.L.
- Exist. 10" W.L. ——— (Red)
- Exist. 12" W.L. ——— (Blue)

SERVICE LEGEND

- ▲ Possible Lead Solder in House
- Possible Lead Service Line
- Plastic with Brass Fittings from Main to Meter Before 2014
- Copper Service Line Before 2014
- Iron Pipe Service Line Main to Meter
- ✕ Lead Sample Sites

BUILDING LEGEND

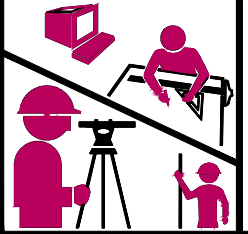
- Homes & Businesses Built Before 1998
- Homes & Businesses Built From 1998 to 2014
- Homes & Businesses Built After 2014

VILLAGE OF
LEWISBURG
PREBLE COUNTY, OHIO

WATER MAPPING
LEAD SERVICE LINES & FIXTURES

COMMUNITY SYSTEM (PWS ID #OH 6800812)

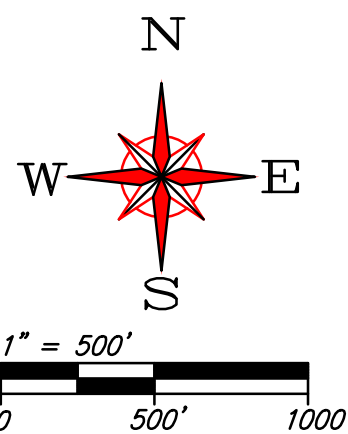
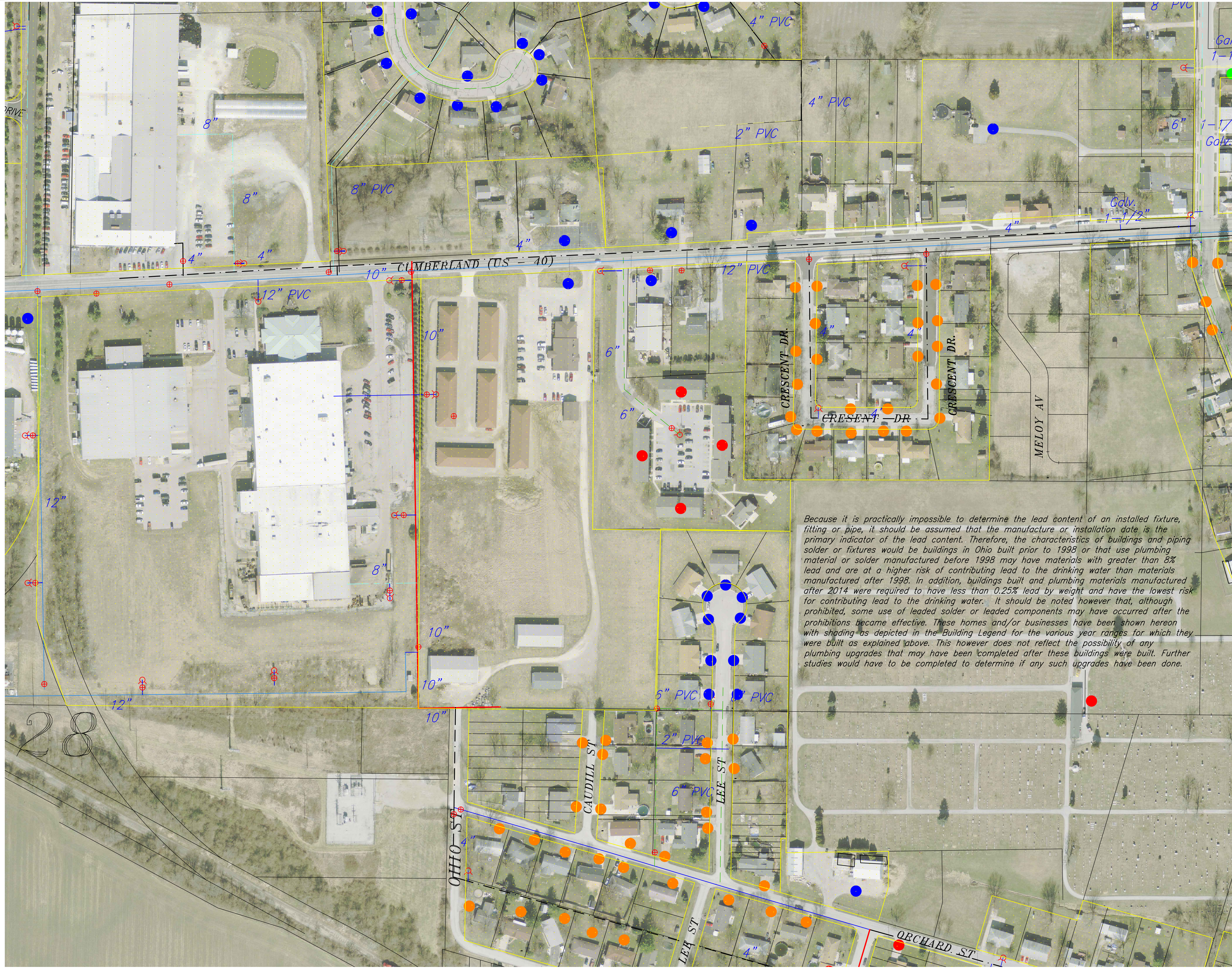
NW CORNER



KRAMER
& ASSOCIATES
Surveyors, Engineers, & Design Consultants
101 N. Barnes St., Lima, Ohio 43026
(615) 456-1222 FAX (615) 456-6922

Project No. 17-007
Date: 02/20/17
Drawn By: MPT
Checked By: DEK
Drawing No. D-8515

3
of
10



WATERLINE LEGEND

- Exist. 2" W.L. ———
- Exist. 4" W.L. — — —
- Exist. 6" W.L. - - - -
- Exist. 8" W.L. - - - -
- Exist. 10" W.L. ———
- Exist. 12" W.L. ———

SERVICE LEGEND

- ▲ Possible Lead Solder in House
- Possible Lead Service Line
- Plastic with Brass Fittings from Main to Meter Before 2014
- Copper Service Line Before 2014
- Iron Pipe Service Line Main to Meter
- ✕ Lead Sample Sites

BUILDING LEGEND

- Homes & Businesses Built Before 1998
- Homes & Businesses Built From 1998 to 2014
- Homes & Businesses Built After 2014

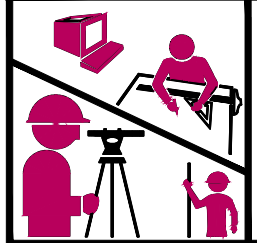
Because it is practically impossible to determine the lead content of an installed fixture, fitting or pipe, it should be assumed that the manufacture or installation date is the primary indicator of the lead content. Therefore, the characteristics of buildings and piping solder or fixtures would be buildings in Ohio built prior to 1998 or that use plumbing material or solder manufactured before 1998 may have materials with greater than 8% lead and are at a higher risk of contributing lead to the drinking water than materials manufactured after 1998. In addition, buildings built and plumbing materials manufactured after 2014 were required to have less than 0.25% lead by weight and have the lowest risk for contributing lead to the drinking water. It should be noted however that, although prohibited, some use of leaded solder or leaded components may have occurred after the prohibitions became effective. These homes and/or businesses have been shown hereon with shading as depicted in the Building Legend for the various year ranges for which they were built as explained above. This however does not reflect the possibility of any plumbing upgrades that may have been completed after these buildings were built. Further studies would have to be completed to determine if any such upgrades have been done.

VILLAGE OF
LEWISBURG
PREBLE COUNTY, OHIO

WATER MAPPING
LEAD SERVICE LINES & FIXTURES

COMMUNITY SYSTEM (PWS ID #OH 6800812)

WEST CENTRAL NORTH

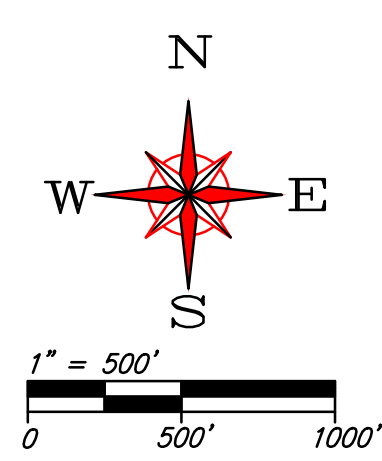


KRAMER
& ASSOCIATES
Surveyors, Engineers, & Design Consultants
101 N. Barnes St., Lewis, Ohio 44022
(419) 525-1222 FAX (419) 525-1222

Project No. 17-007
Date: 02/20/17
Drawn By: MPT
Checked By: DEK
Drawing No. D-8516

4
or
10

Because it is practically impossible to determine the lead content of an installed fixture, fitting or pipe, it should be assumed that the manufacture or installation date is the primary indicator of the lead content. Therefore, the characteristics of buildings and piping solder or fixtures would be buildings in Ohio built prior to 1998 or that use plumbing material or solder manufactured before 1998 may have materials with greater than 8% lead and are at a higher risk of contributing lead to the drinking water than materials manufactured after 1998. In addition, buildings built and plumbing materials manufactured after 2014 were required to have less than 0.25% lead by weight and have the lowest risk for contributing lead to the drinking water. It should be noted however that, although prohibited, some use of leaded solder or leaded components may have occurred after the prohibitions became effective. These homes and/or businesses have been shown hereon with shading as depicted in the Building Legend for the various year ranges for which they were built as explained above. This however does not reflect the possibility of any plumbing upgrades that may have been completed after these buildings were built. Further studies would have to be completed to determine if any such upgrades have been done.



WATERLINE LEGEND

- Exist. 2" W.L. ———
- Exist. 4" W.L. - - - -
- Exist. 6" W.L. - - - -
- Exist. 8" W.L. - - - -
- Exist. 10" W.L. ———
- Exist. 12" W.L. ———

SERVICE LEGEND

- Possible Lead Solder in House
- Possible Lead Service Line
- Plastic with Brass Fittings from Main to Meter Before 2014
- Copper Service Line Before 2014
- Iron Pipe Service Line Main to Meter
- Lead Sample Sites

BUILDING LEGEND

- Homes & Businesses Built Before 1998
- Homes & Businesses Built From 1998 to 2014
- Homes & Businesses Built After 2014

VILLAGE OF
LEWISBURG
PREBLE COUNTY, OHIO

WATER MAPPING
LEAD SERVICE LINES & FIXTURES

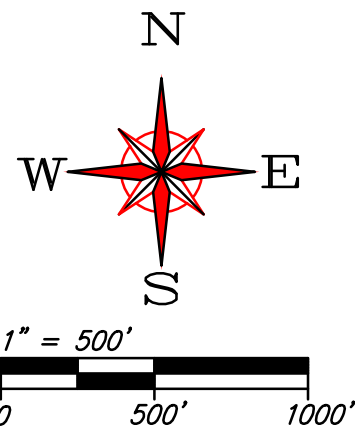
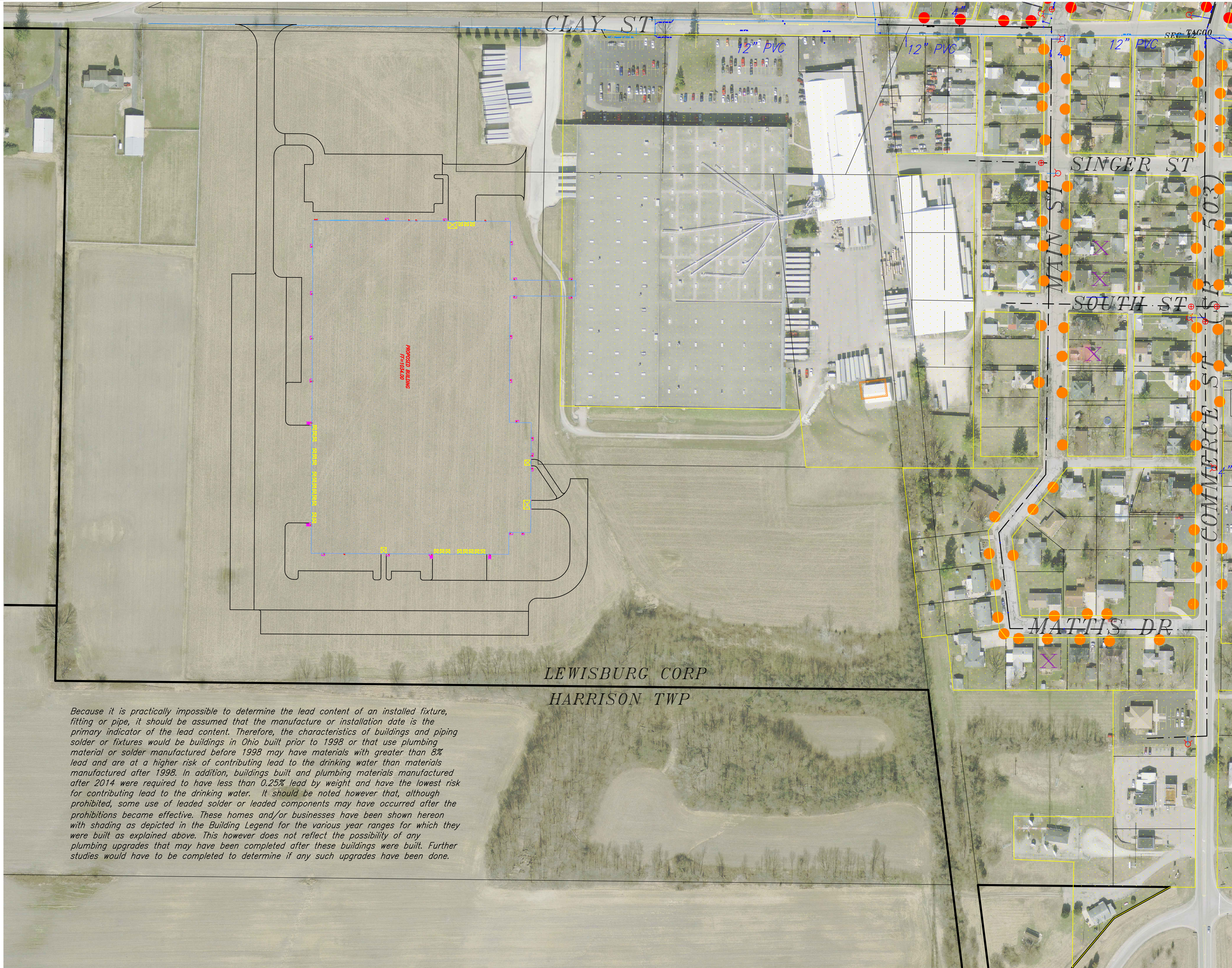
COMMUNITY SYSTEM (PWS ID #OH 6800812)

WEST CENTRAL SOUTH

KRAMER & ASSOCIATES
Surveyors, Engineers, & Design Consultants
101 N. Barnes St., Lewis, Ohio 44022
(419) 496-1222 FAX (419) 496-6922

Project No. 17-007
Date: 02/20/17
Drawn By: MPT
Checked By: DEK
Drawing No. D-8517

5
of
10



WATERLINE LEGEND

- Exist. 2" W.L.
- Exist. 4" W.L.
- Exist. 6" W.L.
- Exist. 8" W.L.
- Exist. 10" W.L.
- Exist. 12" W.L.

SERVICE LEGEND

- Possible Lead Solder in House
- Possible Lead Service Line
- Plastic with Brass Fittings from Main to Meter Before 2014
- Copper Service Line Before 2014
- Iron Pipe Service Line Main to Meter
- Lead Sample Sites

BUILDING LEGEND

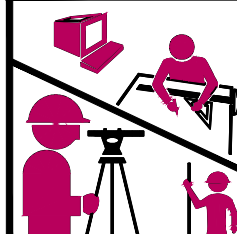
- Homes & Businesses Built Before 1998
- Homes & Businesses Built From 1998 to 2014
- Homes & Businesses Built After 2014

VILLAGE OF
LEWISBURG
PREBLE COUNTY, OHIO
WATER MAPPING
LEAD SERVICE LINES & FIXTURES

Because it is practically impossible to determine the lead content of an installed fixture, fitting or pipe, it should be assumed that the manufacture or installation date is the primary indicator of the lead content. Therefore, the characteristics of buildings and piping solder or fixtures would be buildings in Ohio built prior to 1998 or that use plumbing material or solder manufactured before 1998 may have materials with greater than 8% lead and are at a higher risk of contributing lead to the drinking water than materials manufactured after 1998. In addition, buildings built and plumbing materials manufactured after 2014 were required to have less than 0.25% lead by weight and have the lowest risk for contributing lead to the drinking water. It should be noted however that, although prohibited, some use of leaded solder or leaded components may have occurred after the prohibitions became effective. These homes and/or businesses have been shown hereon with shading as depicted in the Building Legend for the various year ranges for which they were built as explained above. This however does not reflect the possibility of any plumbing upgrades that may have been completed after these buildings were built. Further studies would have to be completed to determine if any such upgrades have been done.

COMMUNITY SYSTEM (PWS ID #OH 6800812)

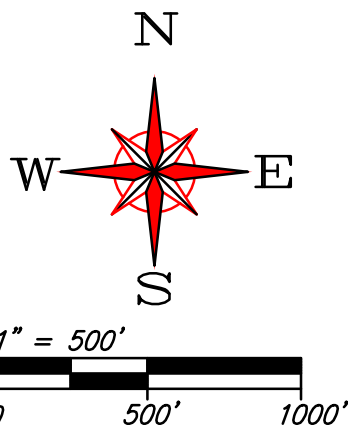
SOUTHWEST CORNER



KRAMER
& ASSOCIATES
Surveyors, Engineers, & Design Consultants
101 N. Barnes St., Lewis, Ohio 43044
(607) 696-1122 FAX (607) 696-6912

Project No. 17-007
Date: 02/20/17
Drawn By: MPT
Checked By: DEK
Drawing No. D-8518

6
of
10



WATERLINE LEGEND

- Exist. 2" W.L. ———
- Exist. 4" W.L. — — —
- Exist. 6" W.L. - - - -
- Exist. 8" W.L. - - - -
- Exist. 10" W.L. ———
- Exist. 12" W.L. ———

SERVICE LEGEND

- ▲ Possible Lead Solder in House
- Possible Lead Service Line
- Plastic with Brass Fittings from Main to Meter Before 2014
- Copper Service Line Before 2014
- Iron Pipe Service Line Main to Meter
- ✕ Lead Sample Sites

BUILDING LEGEND

- Homes & Businesses Built Before 1998
- Homes & Businesses Built From 1998 to 2014
- Homes & Businesses Built After 2014

VILLAGE OF
LEWISBURG
PREBLE COUNTY, OHIO

WATER MAPPING
LEAD SERVICE LINES & FIXTURES

COMMUNITY SYSTEM (PWS ID #OH 6800812)

NORTHEAST CORNER

Project No. 17-007
Date 02/20/17
Drawn By MPT
Checked By DEK
Drawing No. D-8519

7
or
10

Because it is practically impossible to determine the lead content of an installed fixture, fitting or pipe, it should be assumed that the manufacture or installation date is the primary indicator of the lead content. Therefore, the characteristics of buildings and piping solder or fixtures would be buildings in Ohio built prior to 1998 or that use plumbing material or solder manufactured before 1998 may have materials with greater than 8% lead and are at a higher risk of contributing lead to the drinking water than materials manufactured after 1998. In addition, buildings built and plumbing materials manufactured after 2014 were required to have less than 0.25% lead by weight and have the lowest risk for contributing lead to the drinking water. It should be noted however that, although prohibited, some use of leaded solder or leaded components may have occurred after the prohibitions became effective. These homes and/or businesses have been shown hereon with shading as depicted in the Building Legend for the various year ranges for which they were built as explained above. This however does not reflect the possibility of any plumbing upgrades that may have been completed after these buildings were built. Further studies would have to be completed to determine if any such upgrades have been done.

Galv. 1-1/4"
Galv. 3/4"
Galv. 1-1/4"
6"

FOURTH ST

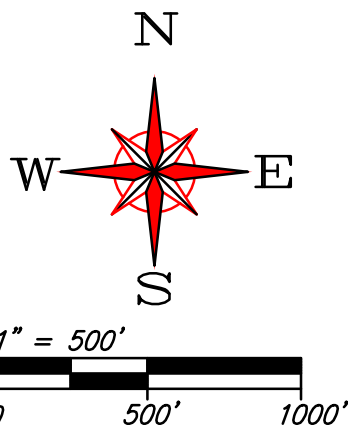
VERONA

SR-503

MAIN STREET

TWIN CREEK

K:\17007 Lewisburg Lead Service Lines & Fixture Mapping\17007Lewisburg Lead Service Map-48x36.dwg, NE Corner, 3/24/2017 9:10:00 AM



WATERLINE LEGEND

- Exist. 2" W.L. ———
- Exist. 4" W.L. — — —
- Exist. 6" W.L. — — —
- Exist. 8" W.L. — — —
- Exist. 10" W.L. ———
- Exist. 12" W.L. ———

SERVICE LEGEND

- ▲ Possible Lead Solder in House
- Possible Lead Service Line
- Plastic with Brass Fittings from Main to Meter Before 2014
- Copper Service Line Before 2014
- Iron Pipe Service Line Main to Meter
- ✕ Lead Sample Sites

BUILDING LEGEND

- Homes & Businesses Built Before 1998
- Homes & Businesses Built From 1998 to 2014
- Homes & Businesses Built After 2014

VILLAGE OF
LEWISBURG
PREBLE COUNTY, OHIO

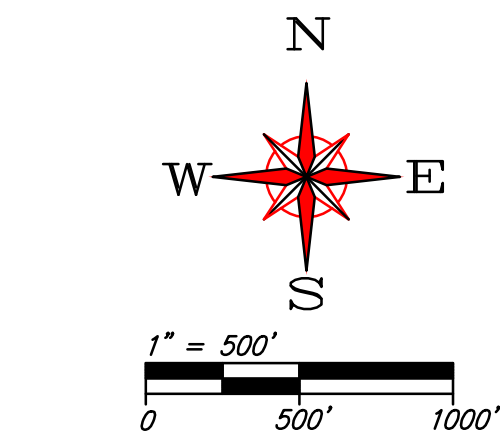
WATER MAPPING
LEAD SERVICE LINES & FIXTURES

Because it is practically impossible to determine the lead content of an installed fixture, fitting or pipe, it should be assumed that the manufacture or installation date is the primary indicator of the lead content. Therefore, the characteristics of buildings and piping solder or fixtures would be buildings in Ohio built prior to 1998 or that use plumbing material or solder manufactured before 1998 may have materials with greater than 8% lead and are at a higher risk of contributing lead to the drinking water than materials manufactured after 1998. In addition, buildings built and plumbing materials manufactured after 2014 were required to have less than 0.25% lead by weight and have the lowest risk for contributing lead to the drinking water. It should be noted however that, although prohibited, some use of leaded solder or leaded components may have occurred after the prohibitions became effective. These homes and/or businesses have been shown hereon with shading as depicted in the Building Legend for the various year ranges for which they were built as explained above. This however does not reflect the possibility of any plumbing upgrades that may have been completed after these buildings were built. Further studies would have to be completed to determine if any such upgrades have been done.

COMMUNITY SYSTEM (PWS ID #OH 6800812)

EAST CENTRAL NORTH

| | | | |
|--|---|---|---------------|
| | KRAMER & ASSOCIATES Surveyors, Engineers, & Design Consultants 101 N. Barnes St., Lewis, Ohio 45344 (937) 436-1222 FAX (937) 436-6922 | Project No. 17-007 Date 02/20/17 Drawn By MPT Checked By DEK Drawing No. D-8520 | 8 of 10 |
|--|---|---|---------------|



WATERLINE LEGEND

- Exist. 2" W.L. ———
- Exist. 4" W.L. — — —
- Exist. 6" W.L. - - - -
- Exist. 8" W.L. - - - -
- Exist. 10" W.L. ———
- Exist. 12" W.L. ———

SERVICE LEGEND

- ▲ Possible Lead Solder in House
- Possible Lead Service Line
- Plastic with Brass Fittings from Main to Meter Before 2014
- Copper Service Line Before 2014
- Iron Pipe Service Line Main to Meter
- ✕ Lead Sample Sites

BUILDING LEGEND

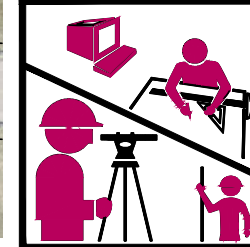
- Homes & Businesses Built Before 1998
- Homes & Businesses Built From 1998 to 2014
- Homes & Businesses Built After 2014

Because it is practically impossible to determine the lead content of an installed fixture, fitting or pipe, it should be assumed that the manufacture or installation date is the primary indicator of the lead content. Therefore, the characteristics of buildings and piping solder or fixtures would be buildings in Ohio built prior to 1998 or that use plumbing material or solder manufactured before 1998 may have materials with greater than 8% lead and are at a higher risk of contributing lead to the drinking water than materials manufactured after 1998. In addition, buildings built and plumbing materials manufactured after 2014 were required to have less than 0.25% lead by weight and have the lowest risk for contributing lead to the drinking water. It should be noted however that, although prohibited, some use of leaded solder or leaded components may have occurred after the prohibitions became effective. These homes and/or businesses have been shown hereon with shading as depicted in the Building Legend for the various year ranges for which they were built as explained above. This however does not reflect the possibility of any plumbing upgrades that may have been completed after these buildings were built. Further studies would have to be completed to determine if any such upgrades have been done.

VILLAGE OF
LEWISBURG
PREBLE COUNTY, OHIO
WATER MAPPING
LEAD SERVICE LINES & FIXTURES

COMMUNITY SYSTEM (PWS ID #OH 6800812)

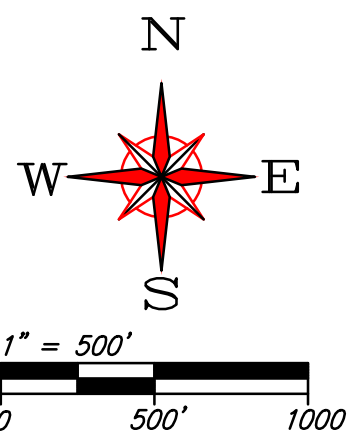
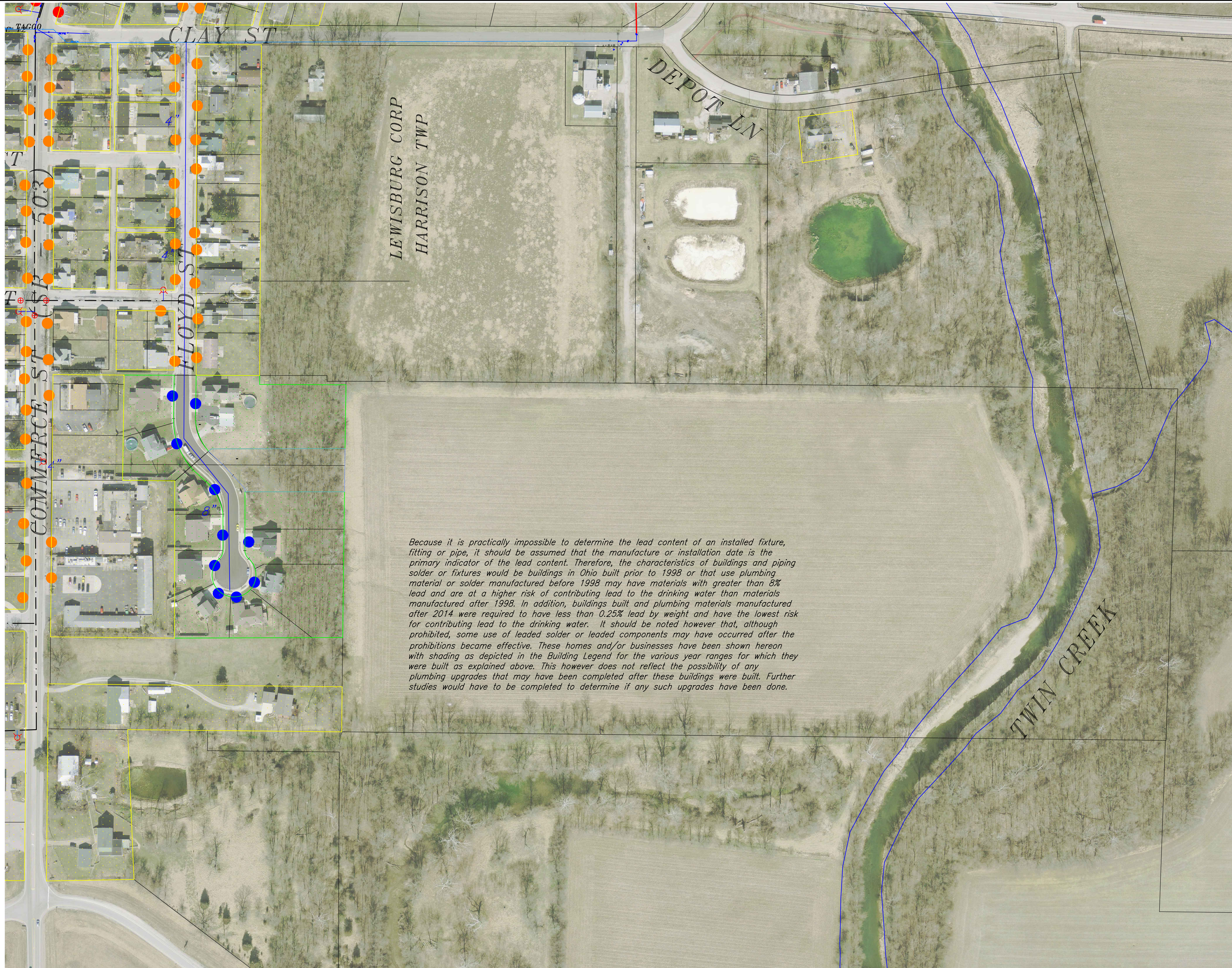
EAST CENTRAL SOUTH



KRAMER
& ASSOCIATES
Surveyors, Engineers, & Design Consultants
101 N. Harris St., Lewis, Ohio 44044
(419) 525-1222 FAX (419) 525-1222

Project No. 17-007
Date: 02/20/17
Drawn By: MPT
Checked By: DEK
Drawing No. D-8521

9
or
10



WATERLINE LEGEND

- Exist. 2" W.L. ————
- Exist. 4" W.L. — — — —
- Exist. 6" W.L. - - - - -
- Exist. 8" W.L. - - - - -
- Exist. 10" W.L. —————
- Exist. 12" W.L. —————

SERVICE LEGEND

- ▲ Possible Lead Solder in House
- Possible Lead Service Line
- Plastic with Brass Fittings from Main to Meter Before 2014
- Copper Service Line Before 2014
- Iron Pipe Service Line Main to Meter
- ✕ Lead Sample Sites

BUILDING LEGEND

- Homes & Businesses Built Before 1998
- Homes & Businesses Built From 1998 to 2014
- Homes & Businesses Built After 2014

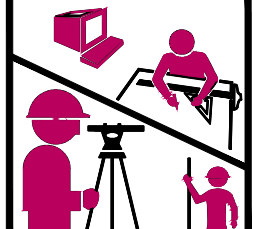
VILLAGE OF
LEWISBURG
PREBLE COUNTY, OHIO

WATER MAPPING
LEAD SERVICE LINES & FIXTURES

1818

COMMUNITY SYSTEM (PWS ID #OH 6800812)

SOUTHEAST CORNER



KRAMER
& ASSOCIATES
Surveyors, Engineers, & Design Consultants
101 N. Barnes St., Lima, Ohio 43031
(615) 456-1232 FAX (615) 456-6912

Project No. 17-007
Date: 02/20/17
Drawn By: MPT
Checked By: DEK
Drawing No. D-8522

10
or
10