

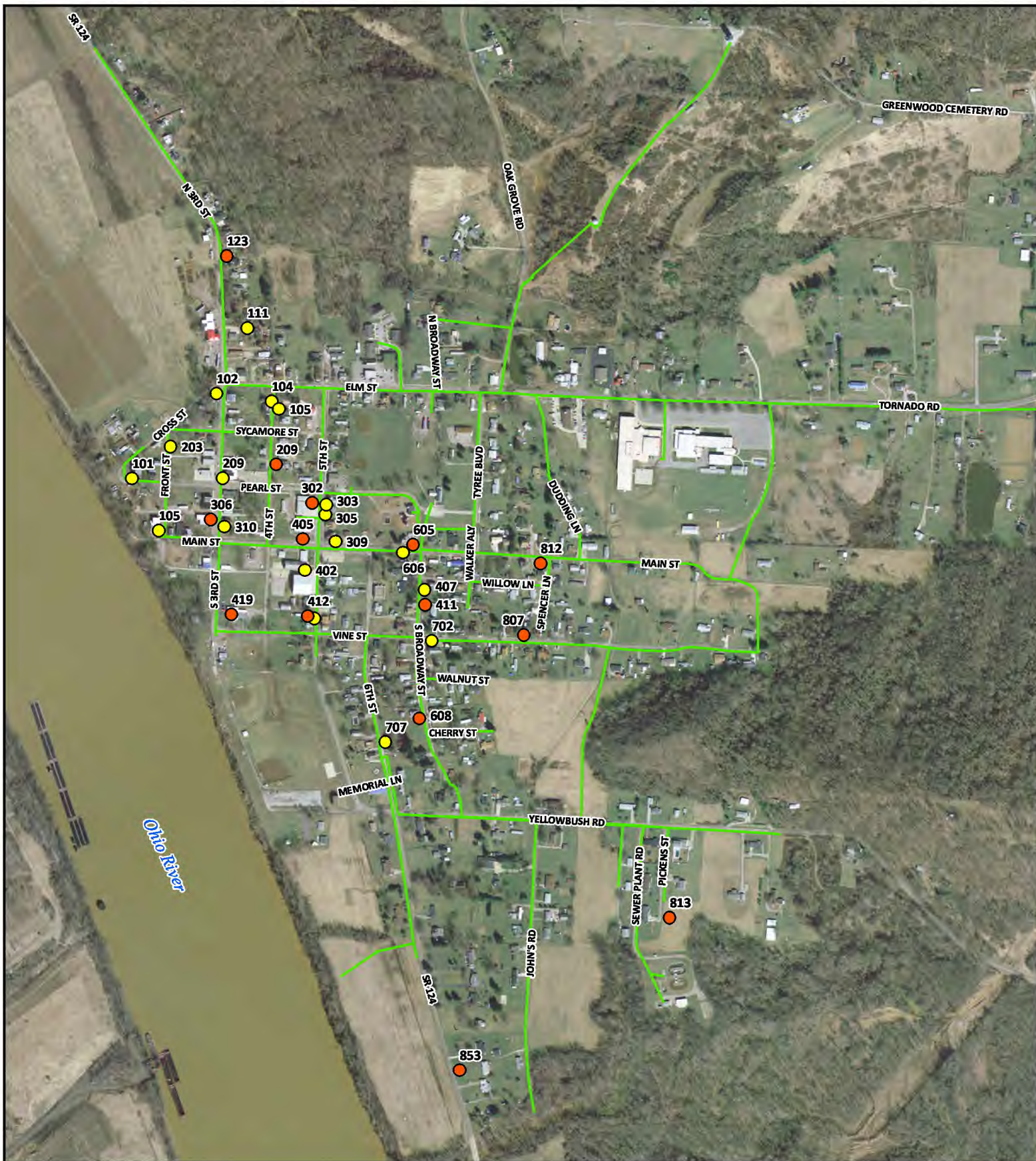
## The Village of Racine Public Water Department

### Lead Service Mapping Narrative

In 2010 the village replaced half of the distribution lines in the village. At that time the service lines were replaced to poly. During the fall of 2016 into 2017 the other half of the distribution system is being replaced. The service lines will also be replaced with poly. In the course of being replaced some of the services on the house side of the setter is copper as noted on this map. The village has no control over the interior plumbing of each structure within the village; nor does the village know what has been used.

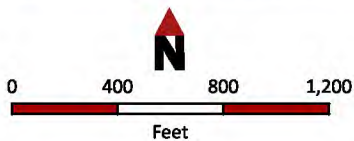
Because it is practically impossible to determine the lead content of an installed fixture, fitting, or pipe, it should be assumed that the manufacture or installation date is the primary indicator of the lead content. Therefore, the characteristics of buildings and piping solder or fixtures would be **buildings in Ohio built prior to 1998 or that use plumbing material or solder manufactured before 1998 may have materials with greater than 8% lead and are at a higher risk of contributing lead to the drinking water than materials manufactured after 1998. In addition, buildings built and plumbing materials manufactured after 2014 were required to have less than 0.25% lead by weight and have the lowest risk for contributing lead to the drinking water. It should be noted however that, although prohibited, some use of leaded solder or leaded components may have occurred after the prohibitions became effective.**

# Village of Racine Water System Inventory



Meigs County

- Sample Sites
- Copper Service Lines
- No-Lead



Map Copyright Buckeye Hills - Hocking Valley  
 Regional Development District, January 2017  
 Map Created by Dru Sexton  
 For questions about data sources contact a  
 GIS Specialist at Buckeye Hills  
<http://www.buckeye hills.org> | 740.374.9436



Buckeye Hills - Hocking Valley  
 Regional Development District