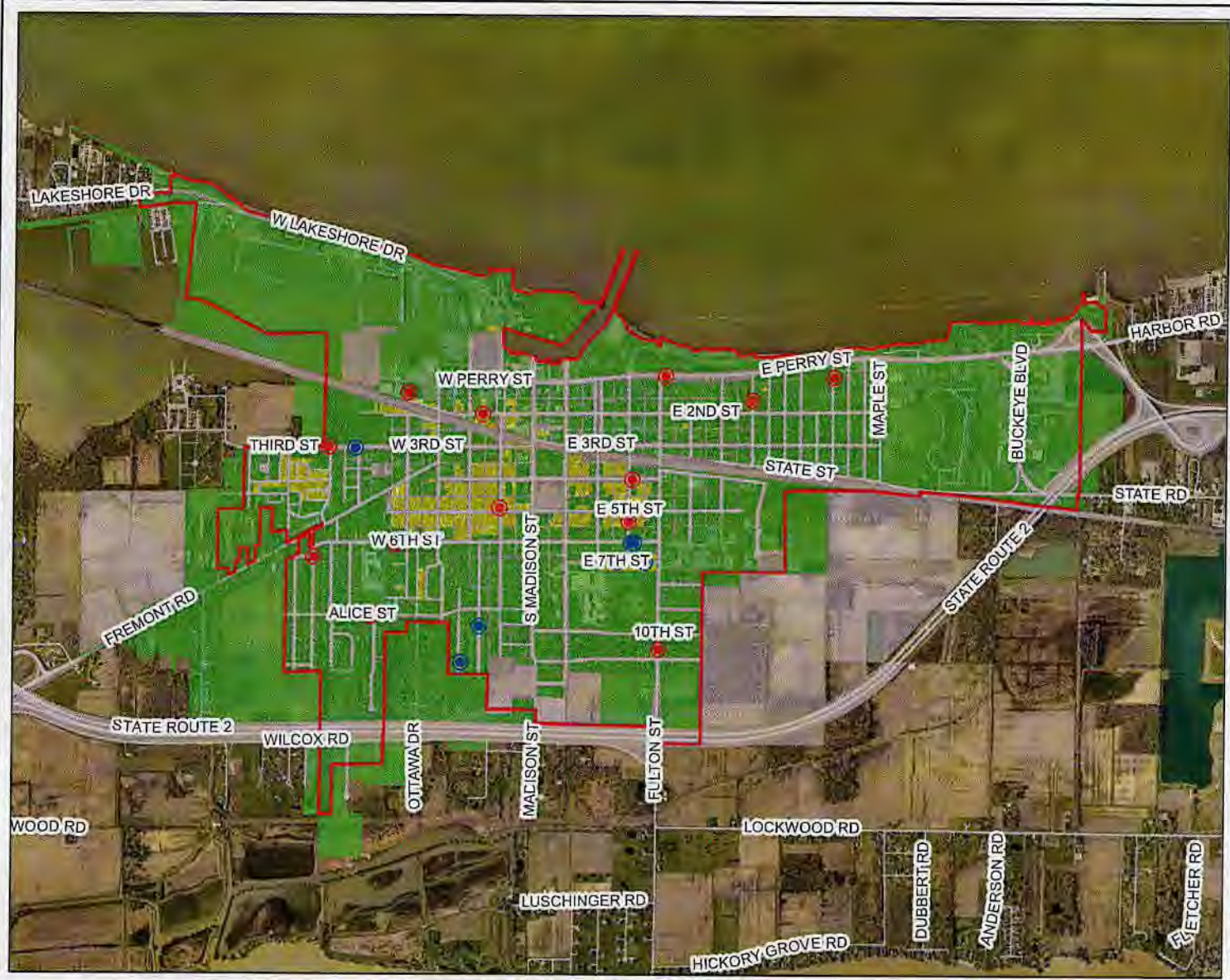


RE: Port Clinton City
Report
Lead Mapping
Drinking Water Program
Ottawa County
PWS ID: OH62C3211

City of Port Clinton Lead Map 2017



DISCLAIMER

Buildings in Ohio built prior to 1998 or that use plumbing material or solder manufactured before 1998 may have materials with greater than 8% lead and are at a higher risk of contributing lead to the drinking water than materials manufactured after 1998. In addition, building built and plumbing material manufactured after 2014 were required to have less than 0.25% lead by weight and have the lowest risk for contributing lead to the drinking water. It should be noted however that, although prohibited, some use of leaded solder or leaded components may have occurred after the prohibitions became effective.

Legend

Lead and Copper Sampling Sites

- Tier Site**
- Tier 1
 - Tier 2
 - Tier 3
 - Lead for Individual Buildings

Lead Zones

- No Information

Material

- Lead
- Non-Lead

