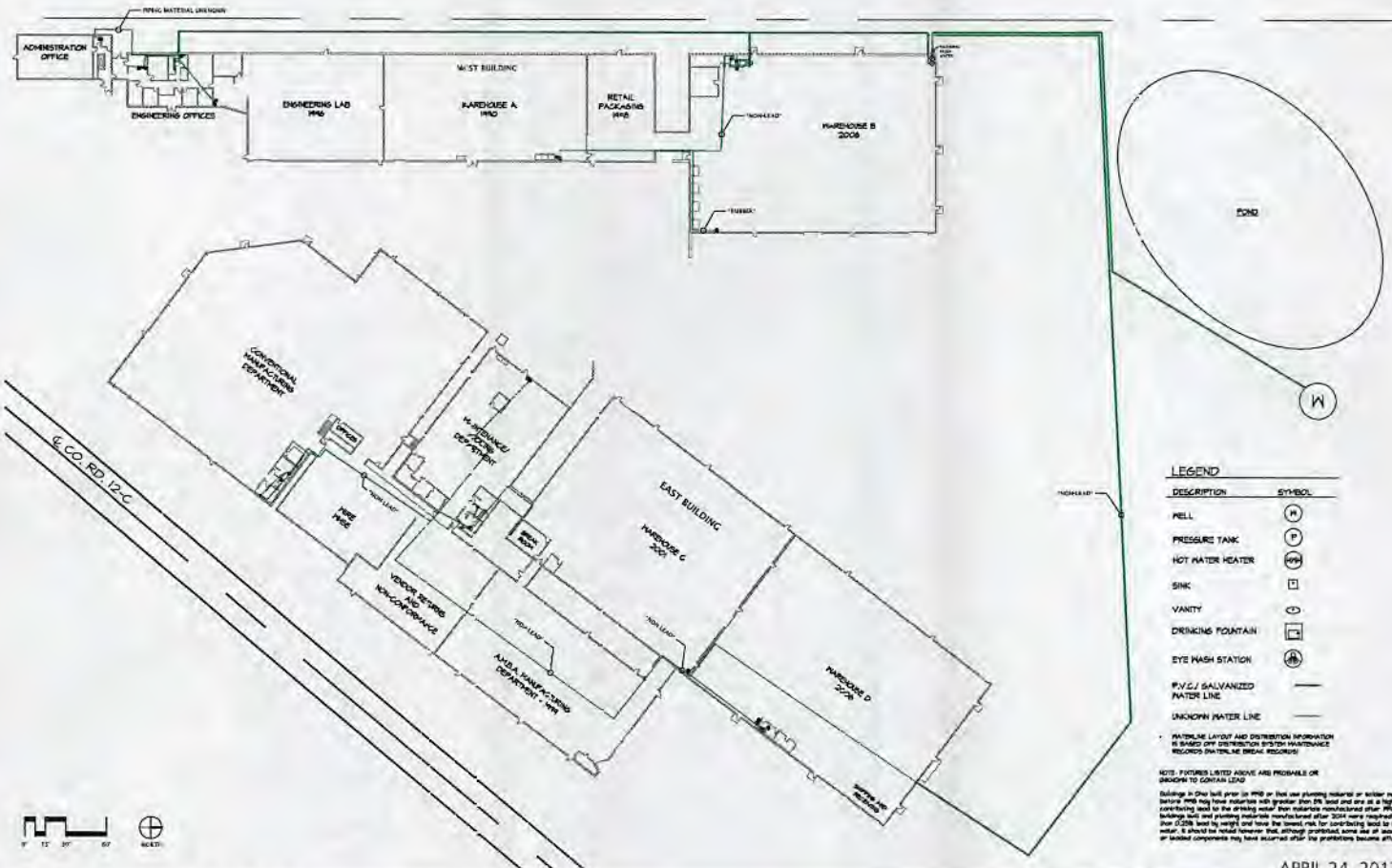


RE: Trufast Organization
Report
Lead Mapping
Drinking Water Program
Williams County
PWS ID: OH8641812



Altenloh, Brinck & Co. U.S., Inc.
 02105 County Road 12-C, Bryan, OH 43506
 Tel: (419) 636-6715

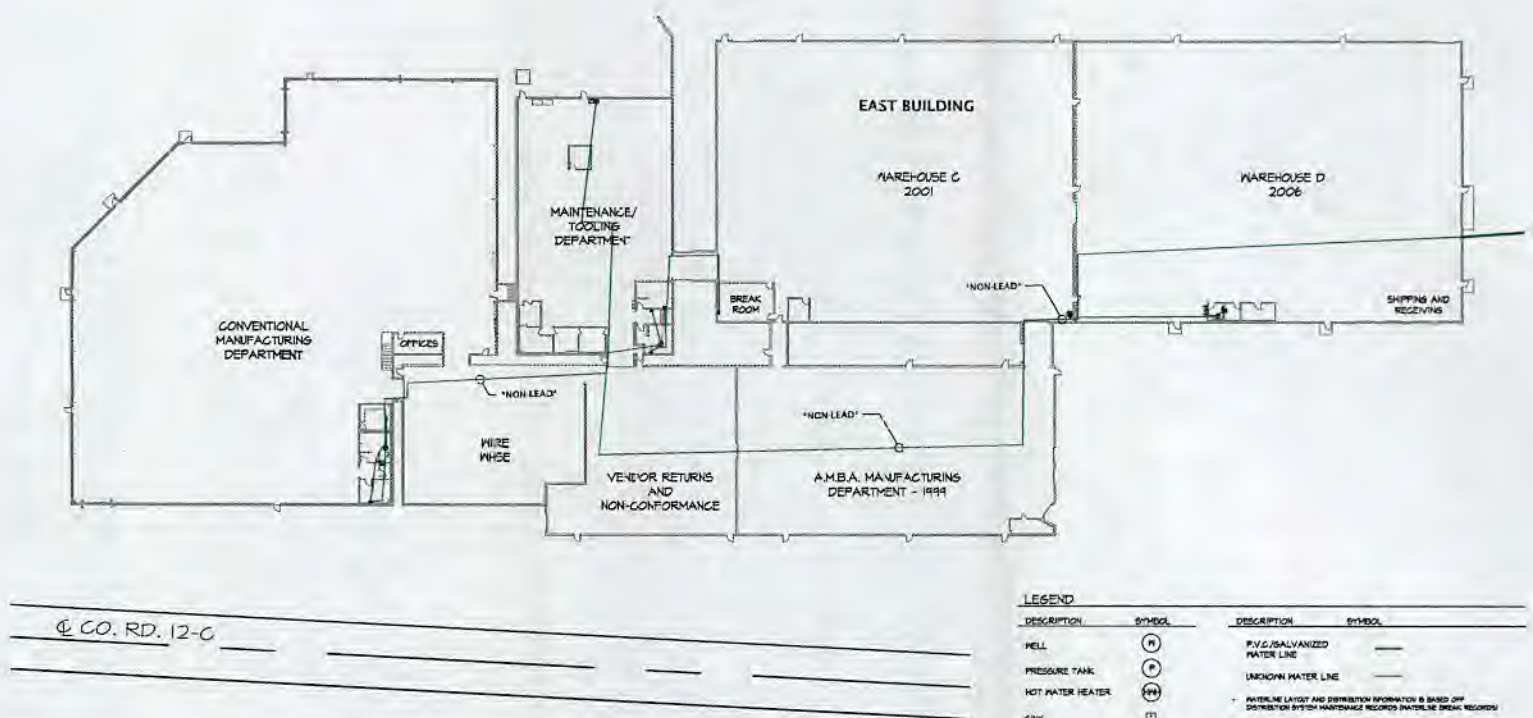
E.P.A. Lead Pipe Infrastructure Mapping

APRIL 24, 2017



Revised Map Rec'd 4/24/2017

Trufant
 OH 8641812



LEGEND

DESCRIPTION	SYMBOL	DESCRIPTION	SYMBOL
WELL	(H)	P.V.C./GALVANIZED WATER LINE	—
PRESSURE TANK	(P)	UNKNOWN WATER LINE	—
HOT WATER HEATER	(HH)		
SINK	(S)		
VANITY	(V)		
DRINKING FOUNTAIN	(DF)		
EYE WASH STATION	(EWS)		

* PAVEMENT LAYOUT AND DISTRIBUTION INFORMATION IS BASED ON DISTRIBUTION SYSTEM MAINTENANCE RECORDS (WATERLEAK BREAK RECORDS)
 ** NOTE: FIXTURES LISTED ABOVE ARE PRESUMED TO CONTAIN LEAD
 Buildings in Ohio built prior to 1990 or that use plumbing material or water manufactured before 1990 may have materials with greater than 20 lead and are at a higher risk of containing lead in the drinking water. For materials manufactured after 1990, in addition, buildings built and plumbing materials manufactured after 2014 were required to have less than 0.01% lead by weight and have the lowest risk for containing lead in the drinking water. It should be noted however that, although prohibited, some use of leaded solder or leaded components may have occurred after the prohibitions became effective.

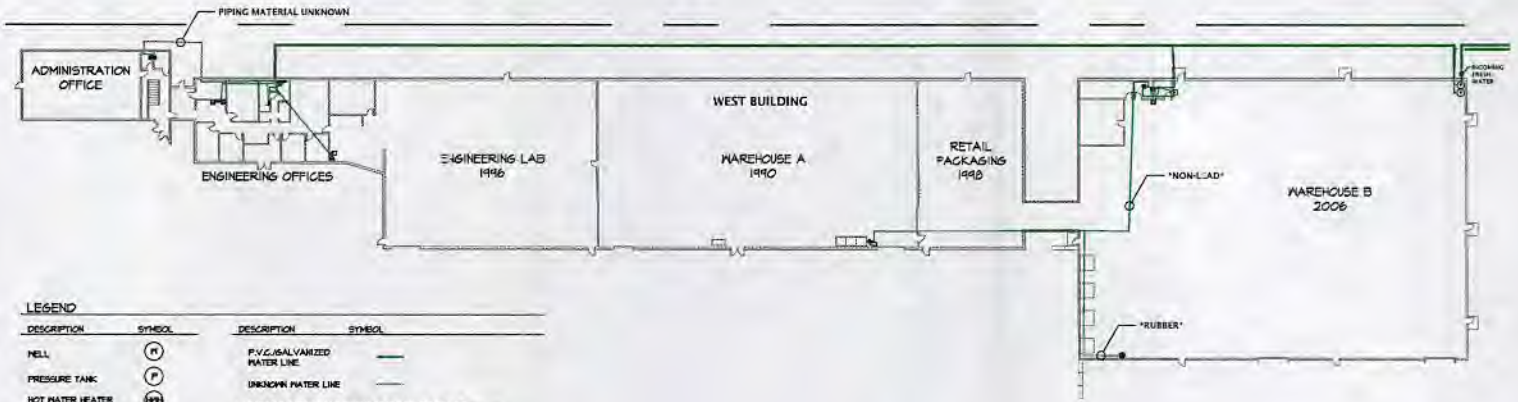


April 24, 2017

Altenloh, Brinck & Co. U.S., Inc.
 02105 County Road 12-C, Bryan, OH 43506
 Tel: (419) 636-6715

E.P.A. Lead Pipe Infrastructure Mapping





LEGEND

DESCRIPTION	SYMBOL	DESCRIPTION	SYMBOL
MILL	(M)	P.V.C. GALVANIZED WATER LINE	—
PRESSURE TANK	(P)	UNKNOWN WATER LINE	—
HOT WATER HEATER	(H)	<p>• WATERLINE LAYOUT AND DIRECTION INFORMATION IS BASED UP DISTRIBUTION SYSTEM MAINTENANCE RECORDS/PATROLLINE BREAK RECORDS</p> <p>NOTE: FIXTURES LISTED ABOVE ARE PROBABLE OR SUSPECT TO CONTAIN LEAD</p> <p>Buildings in Ohio built prior to 1990 or built with plumbing material or solder manufactured before 1990 may have materials with greater than 20% lead and are at a higher risk of contributing lead to the drinking water than materials manufactured after 1990. In addition, buildings built and plumbing materials manufactured after 2000 were required to have less than 0.2% lead by weight and have the lowest risk for contributing lead to the drinking water. It should be noted however that, although prohibited, some use of leaded solder or leaded components may have occurred after the prohibitions became effective.</p>	
SINK	(S)		
VANITY	(V)		
DRINKING FOUNTAIN	(DF)		
EYE WASH STATION	(EWS)		



APRIL 24, 2017

Altenloh, Brinck & Co. U.S., Inc.
 02105 County Road 12-C, Bryan, OH 43506
 Tel: (419) 636-6715

E.P.A. Lead Pipe Infrastructure Mapping

