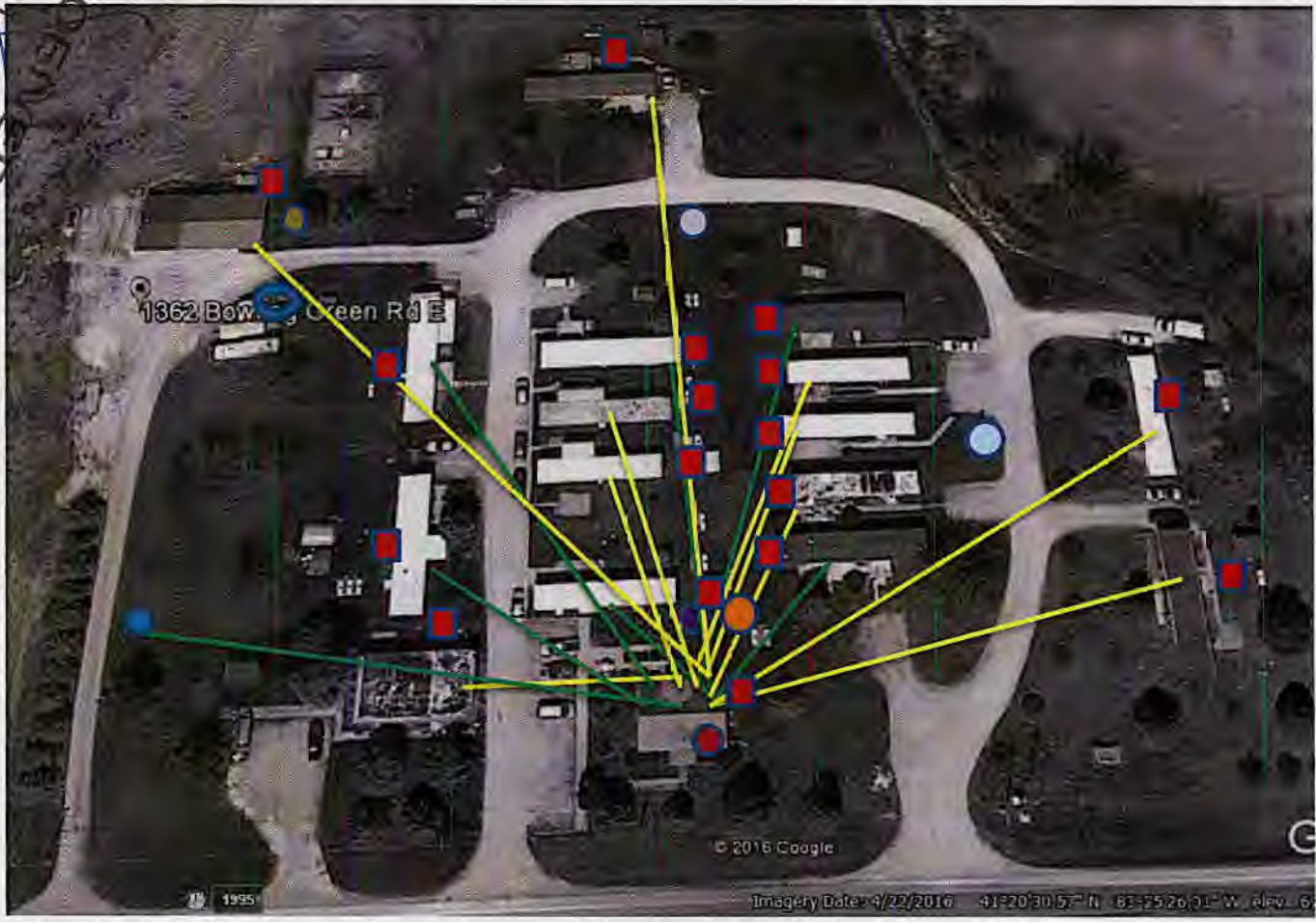


RE: Twin Maples MHP  
Report  
Lead Mapping  
Drinking Water Program  
Wood County  
PWS ID: OH8702712

RECEIVED  
 APR 24 2017  
 DDAGW - NWDO  
 [Signature]



RECEIVED  
 APR 25 2017  
 DDAGW - NWDO  
 [Signature]

Twin Maples Mobile Park LLC. 1362 East Bowling Green RD. Bradner, OH 43406

Charles Gribbin (419-764-5087)

Symbol	Description	Symbol	Description
	Lead		Hand Pump
	Non Lead		Well
	Shut off valve-13		Water Hydrant
	Main shut off valve		
	Shut off valve- pole building		
	West Shut off valve-Lot 1,3,4,5, 14, 15 Appts 16,17,18,19		
	North West shut off valve-Lot 6,7,8,9, 10		
	Shut off valve-lot 11, 12		

Buildings in Ohio built prior to 1998 or that use plumbing material or solder manufactured before 1998 may have materials with greater than 8% lead and are at a higher risk of contributing lead to the drinking water than materials manufactured after 1998. In addition, buildings built and plumbing materials manufactured after 2014 were required to have less than 0.25% lead by weight and have the lowest risk for contributing lead to drinking water. It should be noted however that, although prohibited, some use of leaded solder or leaded components may have occurred after the prohibitions became effective.